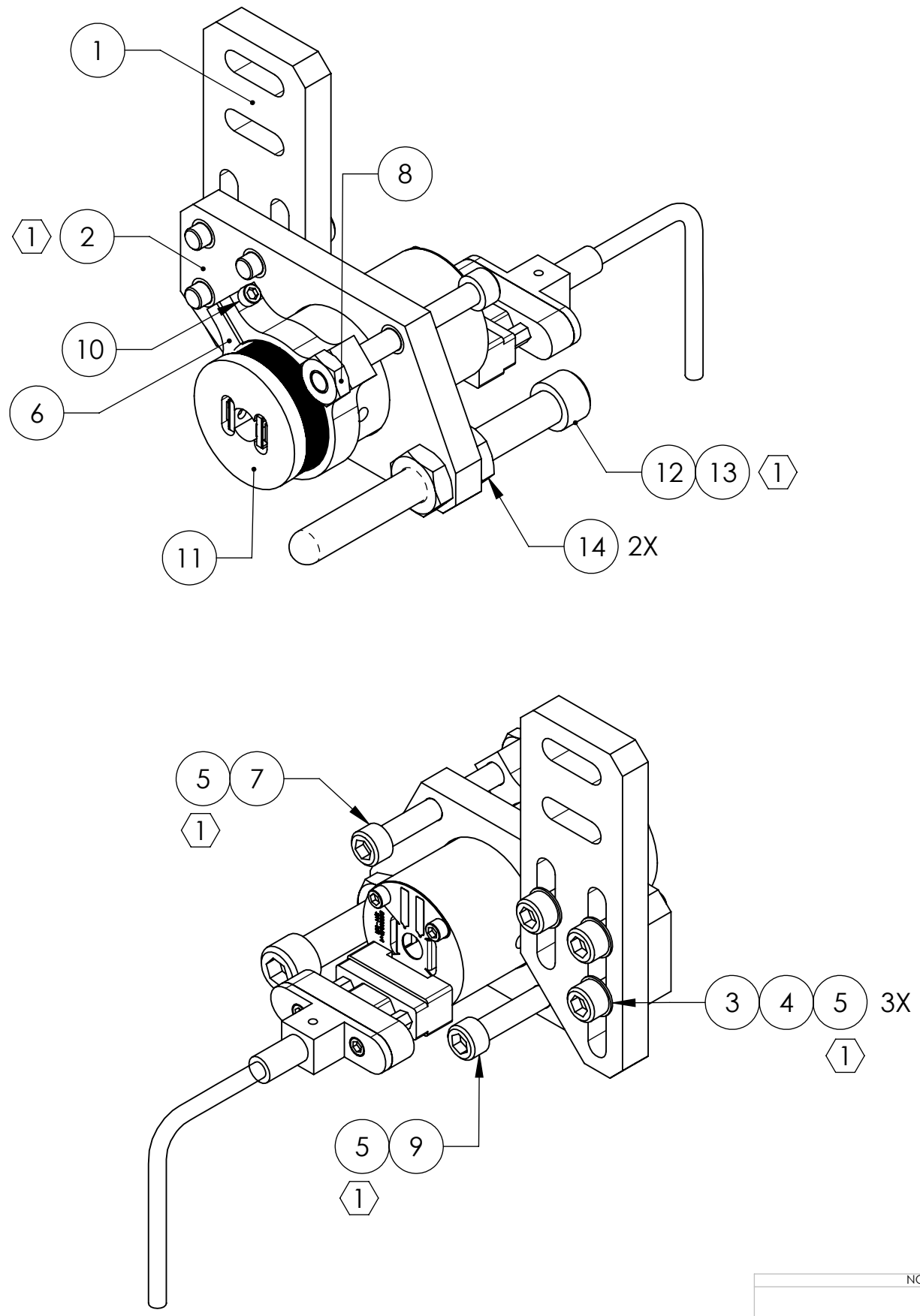


D0901551_Advanced_LIGO_SUS_HLTS_Lower_AOSEM_Alignment_Assembly_Intermediate_Mass_PART PDM REV: X-005, DRAWING PDM REV: X-003

REV.	DATE	DCN #	DRAWING TREE #
v1	17 AUG 2009	E0900243	E080191
-	-	-	-
-	-	-	-



14	-	JAM NUT, 1/4-20	300 SSTL	2	1	3
13	1185-4EN250	HELICOIL, 1/4-20 X 0.25 LONG (1)	NITRONIC 60	1	1	2
12	D030021	SCREW, SOCKET HEAD CAP, 1/4-20 UNC-2A X 2.5 LONG, FULLY THREADED, ROUNDED END	Ag-PLATED 300 SSTL	1	1	2
11	D0901065	AOSEM ASSEMBLY	N/A	1	0	1
10	-	SCREW, SOCKET HEAD CAP, #2-56 UNC-2A X 0.375 LONG	300 SSTL	1	1	2
9	-	SCREW, SOCKET HEAD CAP, #8-32 UNC-2A X 1.25 LONG	300 SSTL	1	1	2
8	-	LOCKNUT, #8-32	300 SSTL	1	1	2
7	-	SCREW, SOCKET HEAD CAP, #8-32 UNC-2A X 1.5 LONG	300 SSTL	1	1	2
6	D0901548	AOSEM ADJUSTMENT COLLAR	6061-T6 Al	1	0	1
5	1185-2EN246	HELICOIL, #8-32 X 0.246 LONG (1)	NITRONIC 60	5	3	8
4	-	SCREW, SOCKET HEAD CAP, #8-32 UNC-2A X 0.625 LONG	300 SSTL	3	1	4
3	-	WASHER, FLAT, #8 (NAS 620-C8L OR EQUIVALENT)	300 SSTL	3	1	4
2	D0901492	AOSEM ALIGNMENT BRACKET, INT. MASS (1)	6061-T6 Al	1	0	1
1	D0901493	LOWER AOSEM MOUNTING BRACKET, INT. MASS	6061-T6 Al	1	0	1
ITEM NO.	PART NUMBER	DESCRIPTION	MATERIAL	REQ	SPARE	TOTAL

PARTS LIST

NOTES AND TOLERANCES: (UNLESS OTHERWISE SPECIFIED)

(1) HELICOILS TO BE INSTALLED INTO ITEM NO. 2 BY LIGO AFTER ALL PARTS ARE CLEANED AND BAKED.

MATERIAL: N/A
FINISH: N/A μinch

CALIFORNIA INSTITUTE OF TECHNOLOGY MASSACHUSETTS INSTITUTE OF TECHNOLOGY		PART NAME LOWER AOSEM ALIGNMENT ASSY, INT. MASS	
SYSTEM ADVANCED LIGO	SUB-SYSTEM SUS	DESIGNER B. MOORE	DATE 01 AUG 2009
DRAFTER D. BRIDGES	DATE 10 SEP 2009	CHECKER M. MEYER	DATE 11 SEP 2009
NEXT ASSY HLTS OVERALL ASSY		DWG. NO. D0901551	REV. v1
SCALE: 1:1		PROJECTION:	