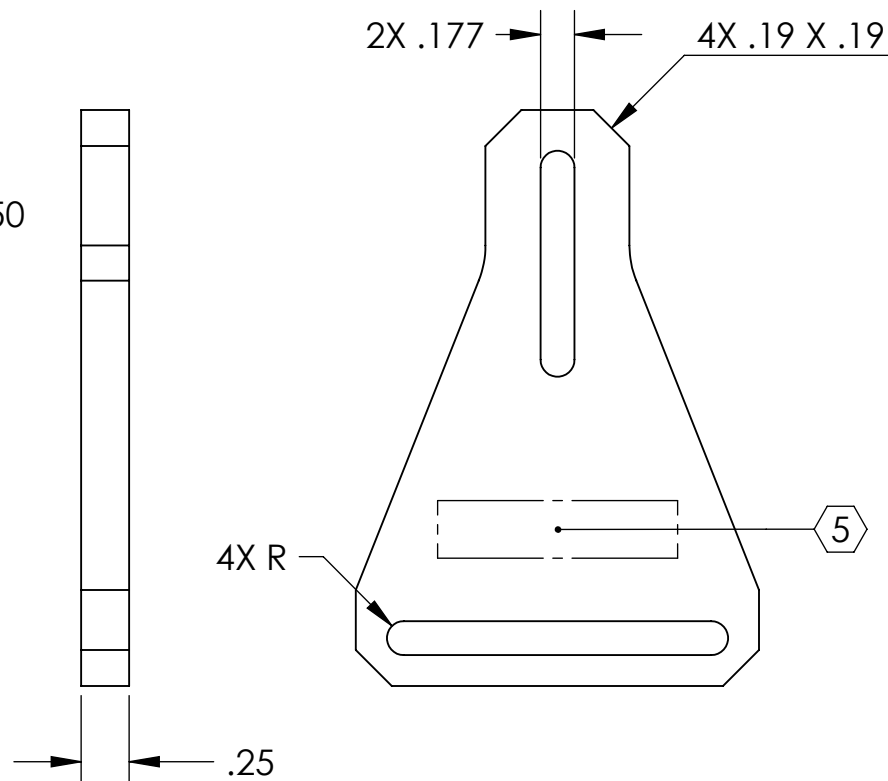
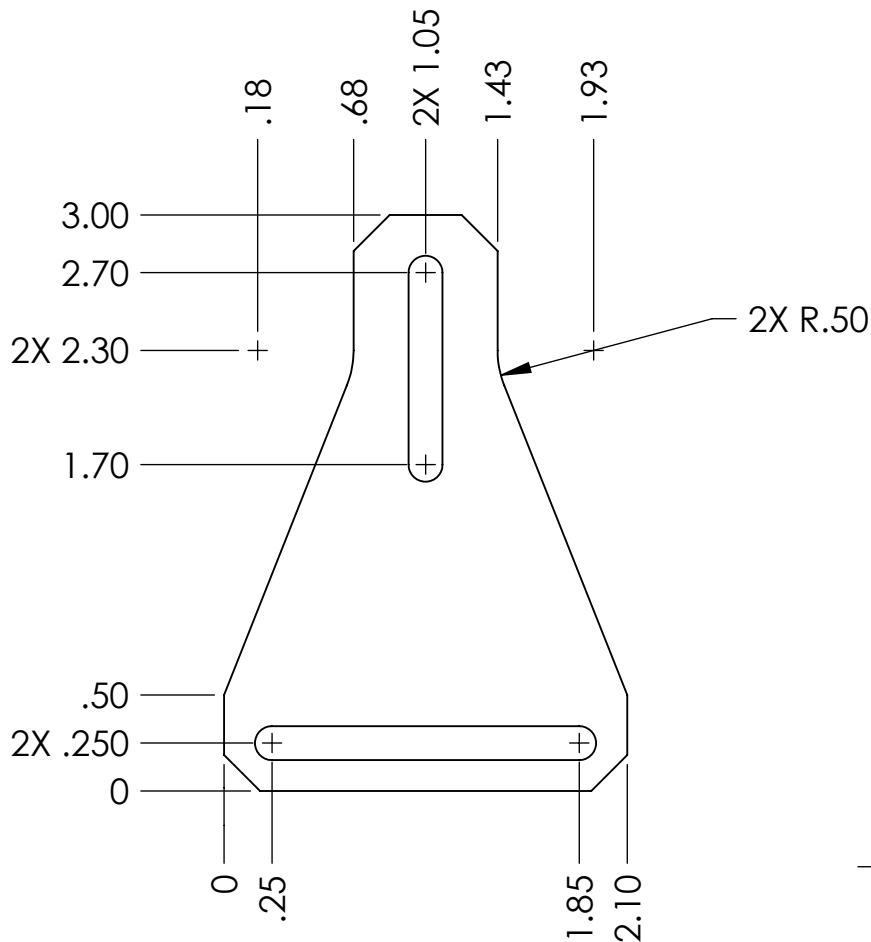


NOTES CONTINUED:

⑤ SCRIBE, ENGRAVE, OR MECHANICALLY STAMP (NO INKS OR DYES) DRAWING PART NUMBER AND REVISION ON NOTED SURFACE FOLLOWED ON THE NEXT LINE BY A THREE DIGIT SERIAL NUMBER. SERIAL NUMBERS START AT 001 FOR THE FIRST ARTICLE AND PROCEED CONSECUTIVELY. USE .07" HIGH CHARACTERS. EXAMPLE: DXXXXXX-VY, S/N 001. A VIBRATORY TOOL MAY BE USED.

REV.	DATE	DCN #	DRAWING TREE #
v1	17 AUG 2009	E0900243	E080191
-	-	-	-
-	-	-	-



NOTES AND TOLERANCES: (UNLESS OTHERWISE SPECIFIED)

DIMENSIONS ARE IN INCHES

TOLERANCES:
 .XX ± .01
 .XXX ± .005

ANGULAR ± 0.5°

1. INTERPRET DRAWING PER ASME Y14.5-1994.
2. REMOVE ALL SHARP EDGES, R.02 MIN.
3. DO NOT SCALE FROM DRAWING.
4. ALL MACHINING FLUIDS SHALL BE WATER SOLUBLE AND FREE OF SULFUR, CHLORINE AND SILICONE, SUCH AS CINCINNATI MILACRON'S CIMTECH 410.

MATERIAL 6061-T6 Al

FINISH 63 μinch



SYSTEM ADVANCED LIGO

SUB-SYSTEM SUS

NEXT ASSY UPPER AOSEM ALIGNMENT ASSY, TEST MASS

PART NAME UPPER AOSEM MOUNTING BRACKET, TEST MASS

DESIGNER D. BRIDGES 24 AUG 2009
 DRAFTER D. BRIDGES 25 AUG 2009
 CHECKER M. MEYER 26 AUG 2009

SIZE DWG. NO. A D0901550
 REV. v1

APPROVAL SCALE: 1:1 PROJECTION: SHEET 1 OF 1