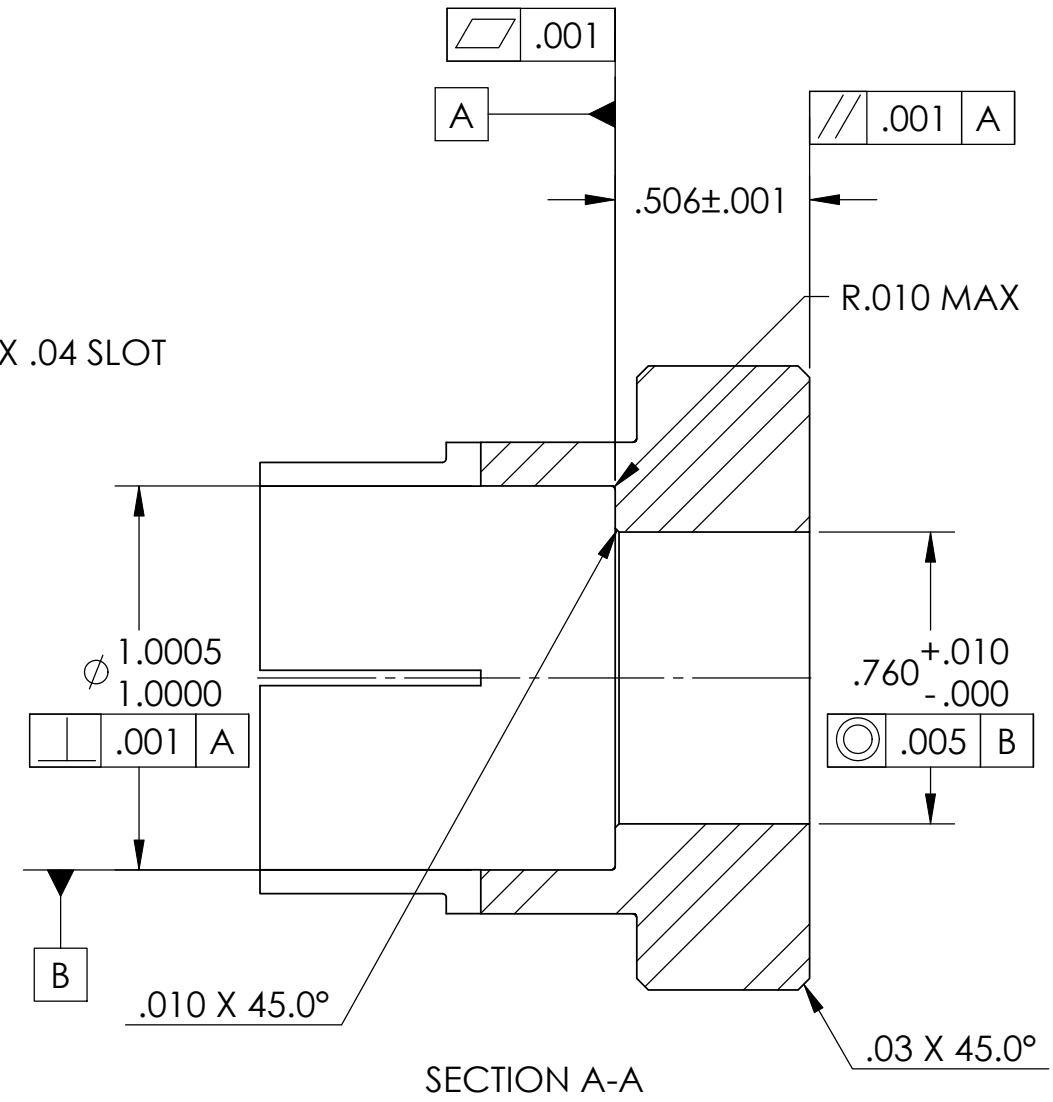
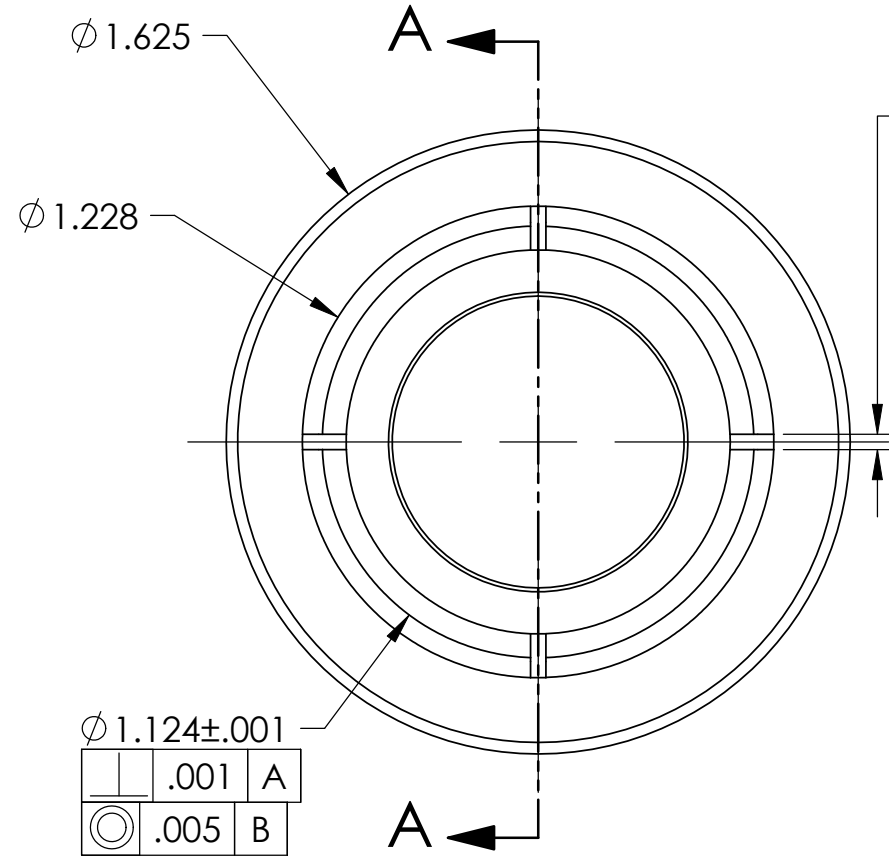
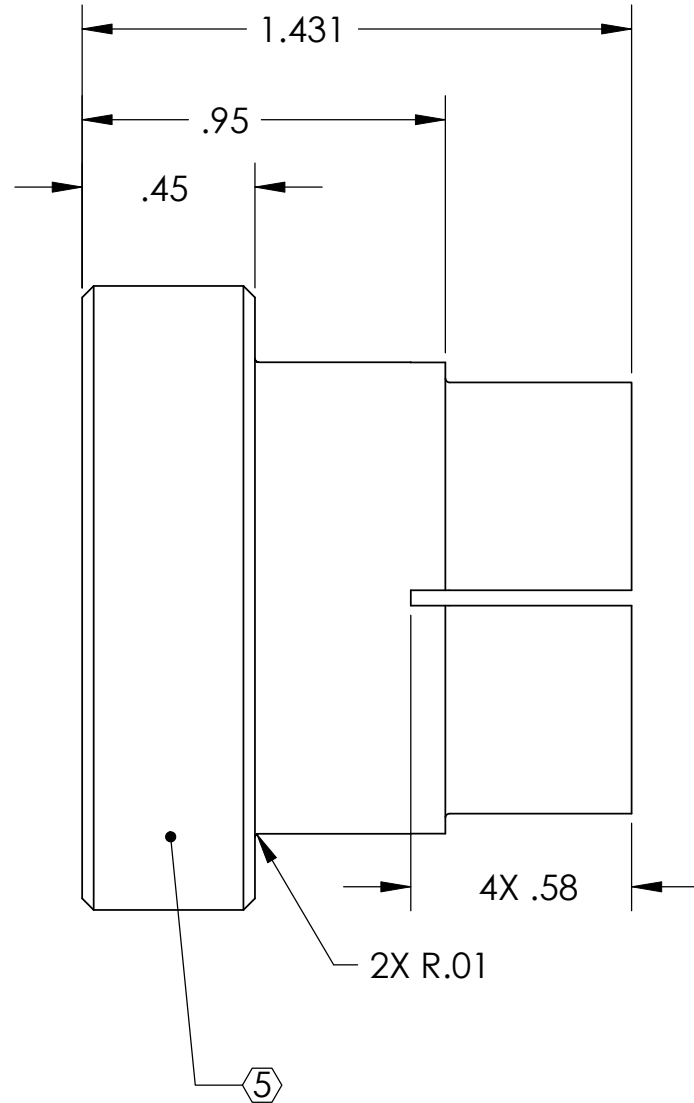


D0901502 Bracket Flexure Rod Shim, Stage 0-1, aLIGO BSC ISI, PART PDM REV: X-006, DRAWING PDM REV: X-004

REV.	DATE	DCN #	DRAWING TREE #
v1	26 Feb. 2010	E1000022	E1000025

NOTES CONTINUED:
 5. SCRIBE, ENGRAVE, OR MECHANICALLY STAMP (NO INKS OR DYES) DRAWING PART NUMBER AND REVISION ON NOTED SURFACE FOLLOWED ON THE NEXT LINE BY A THREE DIGIT SERIAL NUMBER. SERIAL NUMBERS START AT 001 FOR THE FIRST ARTICAL AND PROCEED CONSECUTIVELY. USE .07 HIGH CHARACTERS. EXAMPLE DXXXXXX-VY, S/N 001. A VIBRATORY TOOL MAY BE USED.
 6. APPROXIMATE WEIGHT = 0.13 LB.
 7. MACHINE ALL SURFACES TO REMOVE OXIDES AND MILL FINISH, USE OF ABRASIVE REMOVAL TECHNIQUES IS NOT ALLOWED.
 8. ALL PARTS SHALL BE MANUFACTURED IN ACCORDANCE WITH LIGO SPECIFICATION E0900364.



NOTES AND TOLERANCES: (UNLESS OTHERWISE SPECIFIED)				LIGO CALIFORNIA INSTITUTE OF TECHNOLOGY MASSACHUSETTS INSTITUTE OF TECHNOLOGY		PART NAME					
DIMENSIONS ARE IN INCHES				ADVANCED LIGO		BRACKET FLEXURE SHIM, STAGE 0-1, aLIGO BSC ISI					
TOLERANCES: .XX ± .015 .XXX ± .005				SUB-SYSTEM SEI		DESIGNER	C.RAMET	01 Feb. 2010	SIZE	DWG. NO.	REV.
ANGULAR ± .5°				NEXT ASSY		DRAFTER	M.HILLARD	01 Feb. 2010	B	D0901502	v1
MATERIAL 17-4 PH SSSL, H 1150				FINISH 32 μinch		CHECKER	F.MATICHARD	01 Feb. 2010	SCALE: 2:1	PROJECTION:	SHEET 1 OF 1
				D0902103		APPROVAL	K.MASON	01 Feb. 2010			