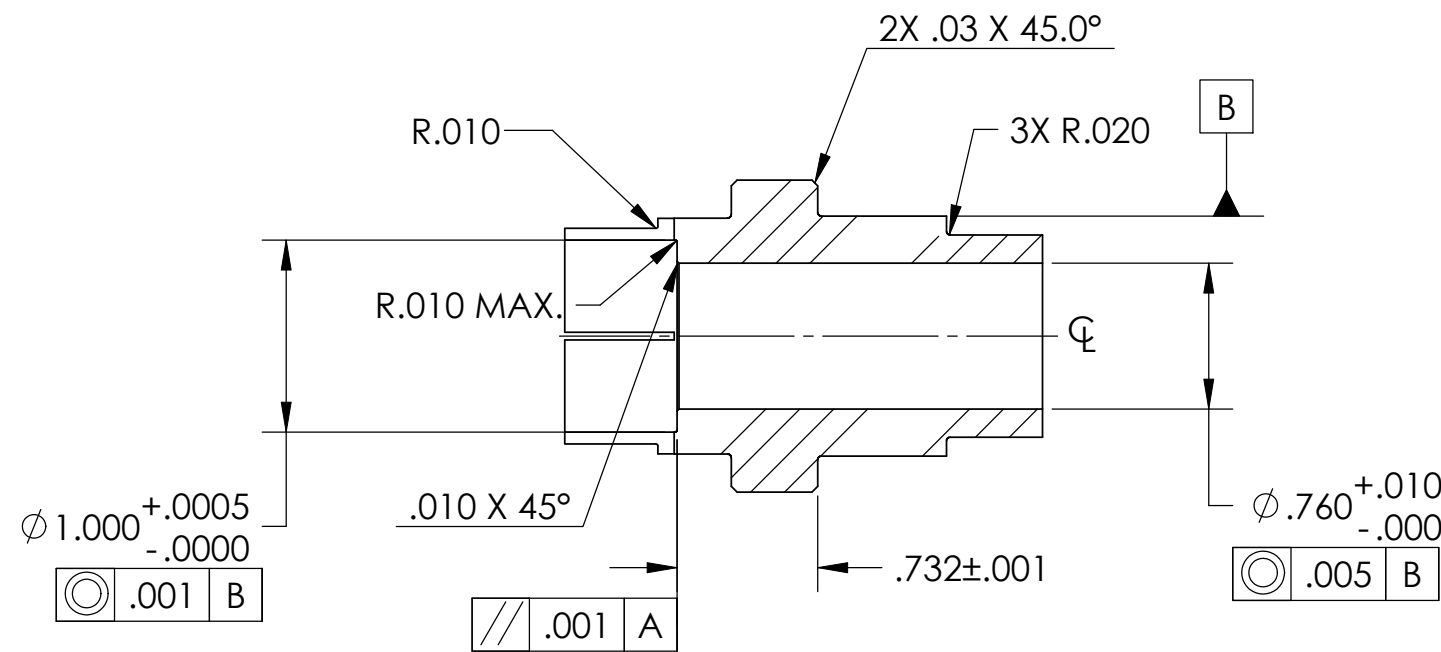
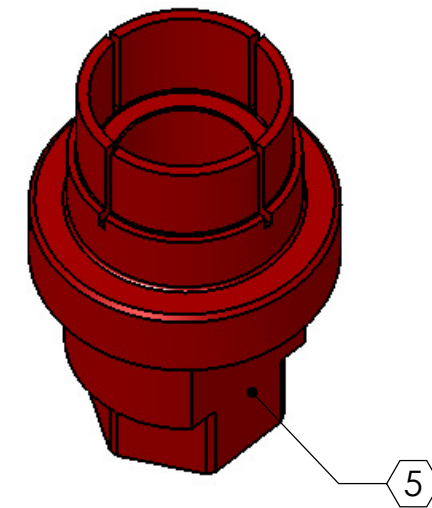
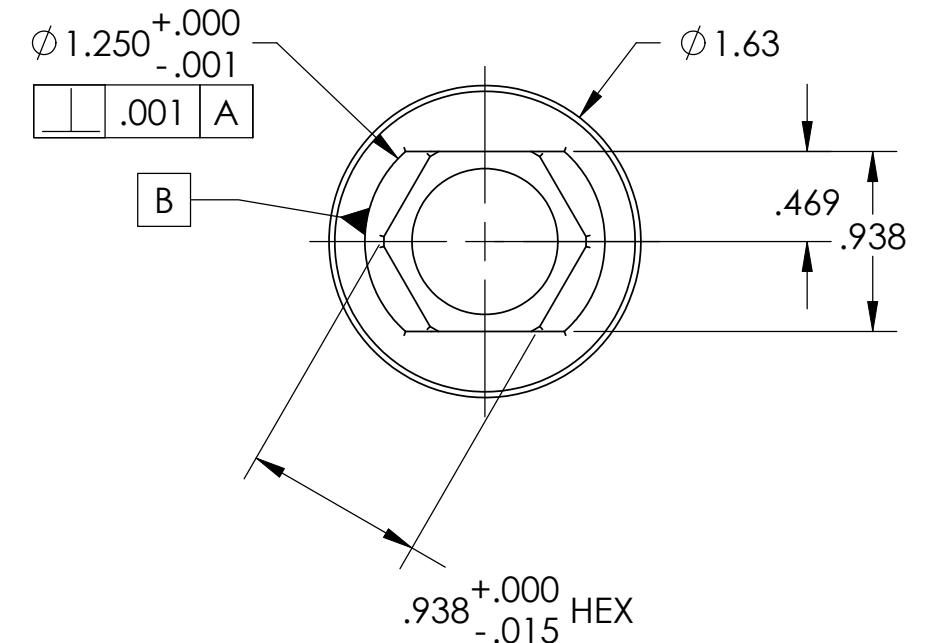
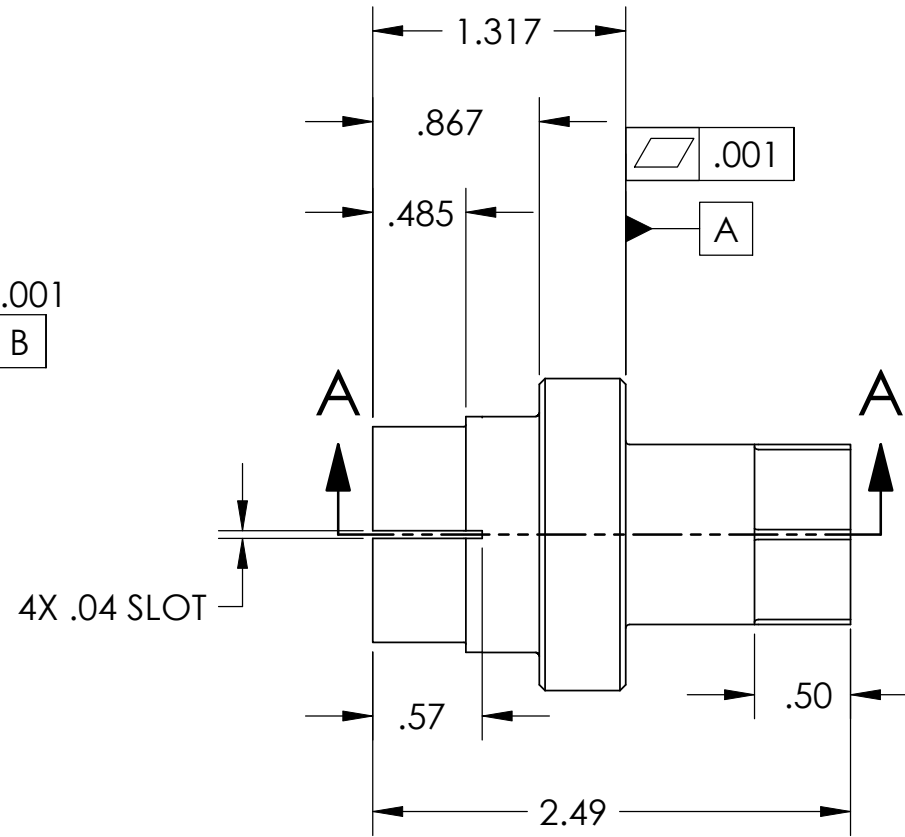
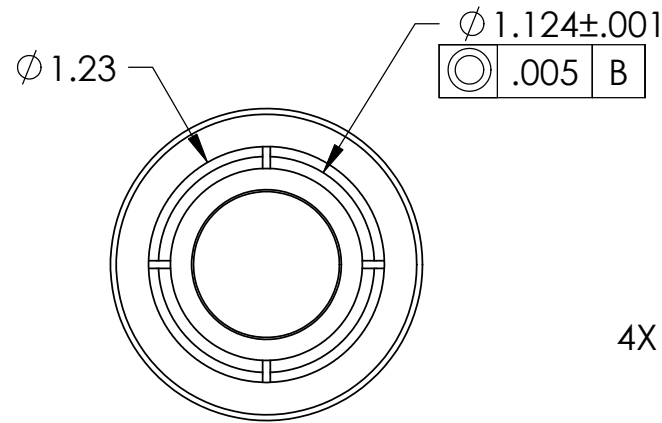


D0901501 Flexure Rod Shim, Stage 1-2, aLIGO BSC ISI, PART PDM REV: X-007, DRAWING PDM REV: X-004

REV.	DATE	DCN #	DRAWING TREE #
v1	01 Mar. 2010	E1000026	E1000025

**NOTES CONTINUED:**  
 5. SCRIBE, ENGRAVE, OR MECHANICALLY STAMP (NO INKS OR DYES) DRAWING PART NUMBER AND REVISION ON NOTED SURFACE FOLLOWED ON THE NEXT LINE BY A THREE DIGIT SERIAL NUMBER. SERIAL NUMBERS START AT 001 FOR THE FIRST ARTICAL AND PROCEED CONSECUTIVELY. USE .07 HIGH CHARACTERS. EXAMPLE DXXXXXX-VY, S/N 001. A VIBRATORY TOOL MAY BE USED.  
 6. APPROXIMATE WEIGHT = 0.46 LB.  
 7. MACHINE ALL SURFACES TO REMOVE OXIDES AND MILL FINISH. USE OF ABRASIVE REMOVAL TECHNIQUES IS NOT ALLOWED.  
 8. ALL PARTS SHALL BE MANUFACTURED IN ACCORDANCE WITH LIGO SPECIFICATION E0900364.



**SECTION A-A**

NOTES AND TOLERANCES: (UNLESS OTHERWISE SPECIFIED)				LIGO CALIFORNIA INSTITUTE OF TECHNOLOGY MASSACHUSETTS INSTITUTE OF TECHNOLOGY		PART NAME					
DIMENSIONS ARE IN INCHES				ADVANCED LIGO		FLEXURE ROD SHIM, STAGE 1-2. aLIGO BSC ISI					
TOLERANCES: .XX ± .015 .XXX ± .005				SEI		DESIGNER	C.RAMET	01 Feb. 2010	SIZE	DWG. NO.	REV.
ANGULAR ± .5°				MATERIAL		DRAFTER	M.HILLARD	01 Feb. 2010	B	D0901501	v1
1. INTERPRET DRAWING PER ASME Y14.5-1994. 2. REMOVE ALL SHARP EDGES, R.02 MIN. 3. DO NOT SCALE FROM DRAWING. 4. ALL MACHINING FLUIDS MUST BE FULLY SYNTHETIC, FULLY WATER SOLUBLE AND FREE OF SULFUR, SILICONE, AND CHLORINE.				FINISH		CHECKER	F.MATICHARD	01 Feb. 2010	SCALE	PROJECTION:	SHEET 1 OF 1
17-4 PH SSSL, H 1150				32 μinch		APPROVAL	K.MASON	01 Feb. 2010	1:1		
				NEXT ASSY		D0902104					