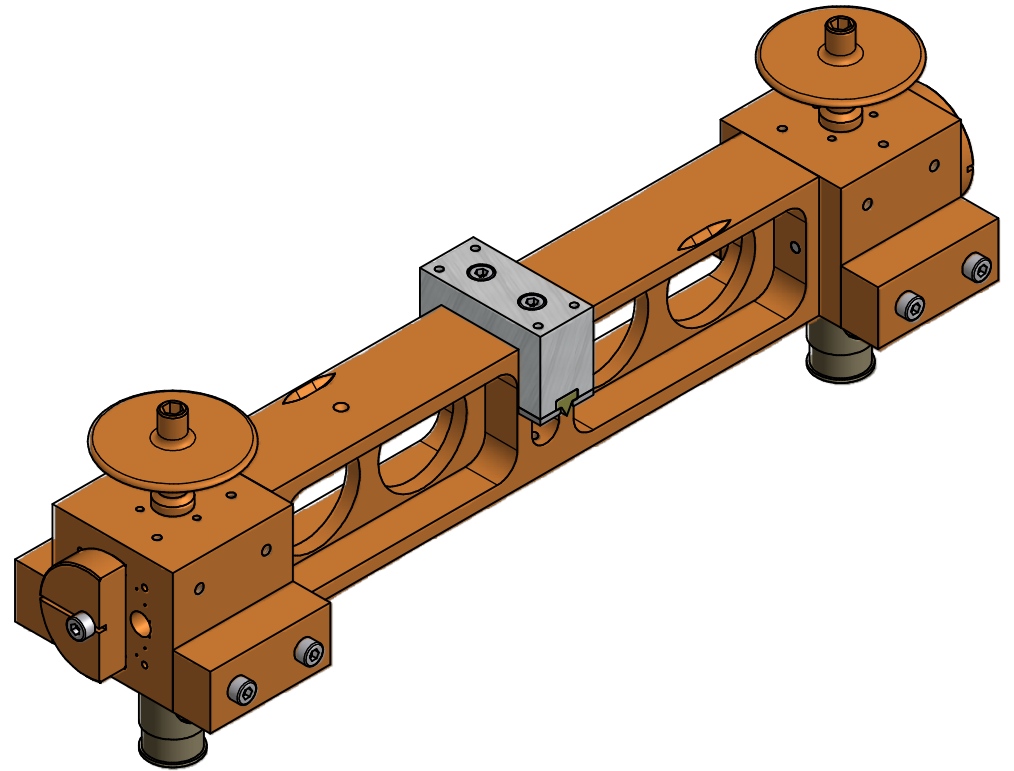


Ass7-wedge
 Capacitive readout
 AC actuation (coil on frame);
 use CW = 40.5
 c.o.w. position = -0.024
 mass = 3.235 Kg



Ass8-wedge
 Capacitive readout
 DC actuation (magnet on frame);
 use CW = 40.5
 c.o.w. position = +0.035
 mass = 3.228 Kg

	LIGO PROJECT	DESIGNED FOR R. De Salvo
		DRAWN BY G. Gennaro-PROMEC
TITLE TILTMETER ASSEMBLY CAPACITIVE WEDGE	DATE 14-06-08	
	LIGO-D081022-00-D	
	SCALE 1/1	A2