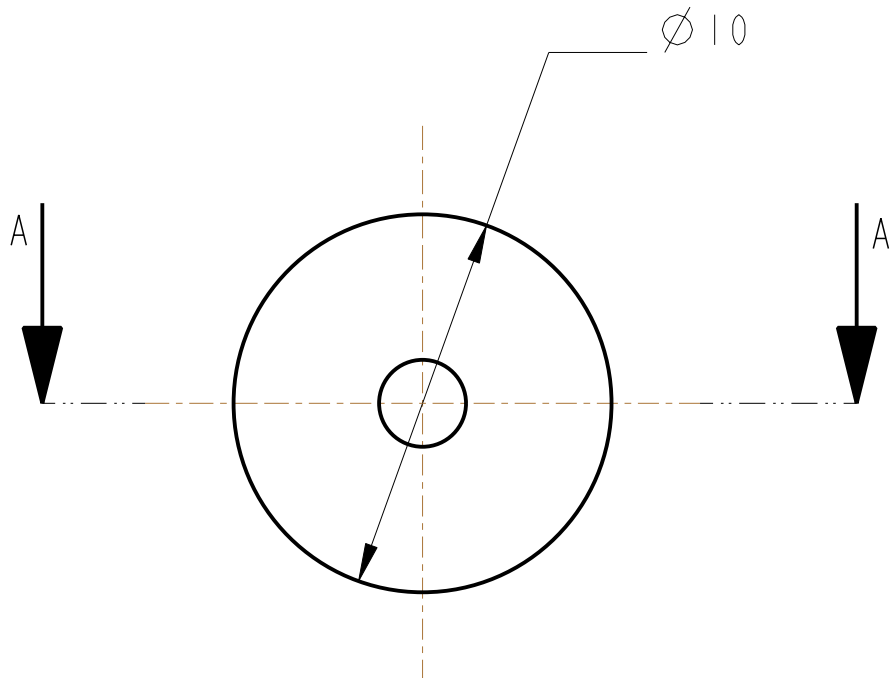


SECTION A-A



ADDITIONAL NOTES:

- PART TO BE INJECTION MOLDED
- FLOUREL COMPOUND TO CONSIST OR
100 PARTS FLOUREL FC2180 OR FE5641
20 PARTS MT BLACK (N990)
3 PARTS MAGLITE (MgO)
6 PARTS Ca(OH)₂
3 PARTS CaO
- WATER SOLUABLE RELEASE AGENT
TO BE USED IF REQUIRED
- MOLDED PARTS MUST BE KEPT FREE
FROM HYDROCARBONS, AND BE HANDLED
WITH CLEAN TOOLS OR CLEAN NITRILE GLOVES
- FLASH REMOVLE TO BE DONE WITH BLADE
NOT ABRASIVE
- PARTS TO BE FOIL WRAPPED
- USE PART D060546, AND TRIP TO
THE LENGTH SHOWN USING THE D080246
TRIMMING TOOL

NOTES: (UNLESS OTHERWISE SPECIFIED)

- REMOVE ALL SHARP EDGES,
R.02 MIN.
- DO NOT SCALE FROM DRAWING.
- ALL MACHINING FLUIDS SHALL BE
WATER SOLUBLE AND FREE OF
SULFUR, CHLORINE AND SILICONE,
SUCH AS CINCINNATI MILACRON'S
CIMTECH 410 (STAINLESS STEEL)
- SCRIBE, ENGRAVE OR STAMP DRAWING
PARTNUMBER ON NOTED SURFACE OF
PART AND A THREE DIGIT SERIAL
NUMBER. SERIAL NUMBERS START
AT 001 FOR THE FIRST PART AND
PROCEED CONSECUTIVELY.
USE .07" HIGH CHARACTERS.
EXAMPLE: D020188- 001. A VIBRATORY
TOOL MAY BE USED.

DIMENSIONS ARE IN mm [INCHES]

TOLERANCES:
X.XX ±0.2 mm
ANGULAR ±0.25 °MATERIAL: FLOUREL
SEE NOTESFINISH: AS MOULDED
√μm [μin] Ra = -----

	NAME	DATE
DRAWN	I WILMUT	11/Dec/06
CHECKED	MB	15/MAR/10
APPROVED	JOD	15/MAR/10

CALIFORNIA INSTITUTE OF TECHNOLOGY
MASSACHUSETTS INSTITUTE OF TECHNOLOGY
IGR, GLASGOW UNIVERSITY GEO 600 GROUP
RUTHERFORD APPLETON LABORATORIESSYSTEM **aLIGO**SUB-SYSTEM **SUS**NEXT ASSY **QUAD LOWER STRUCTURE**PART NAME **EARTHQUAKE STOP
PEN RE MASS BUMP STOPS**

SIZE	DRG. NO.	REV
A	D080245	G.

SCALE 5:1 PROJECTION: SHEET 1 OF