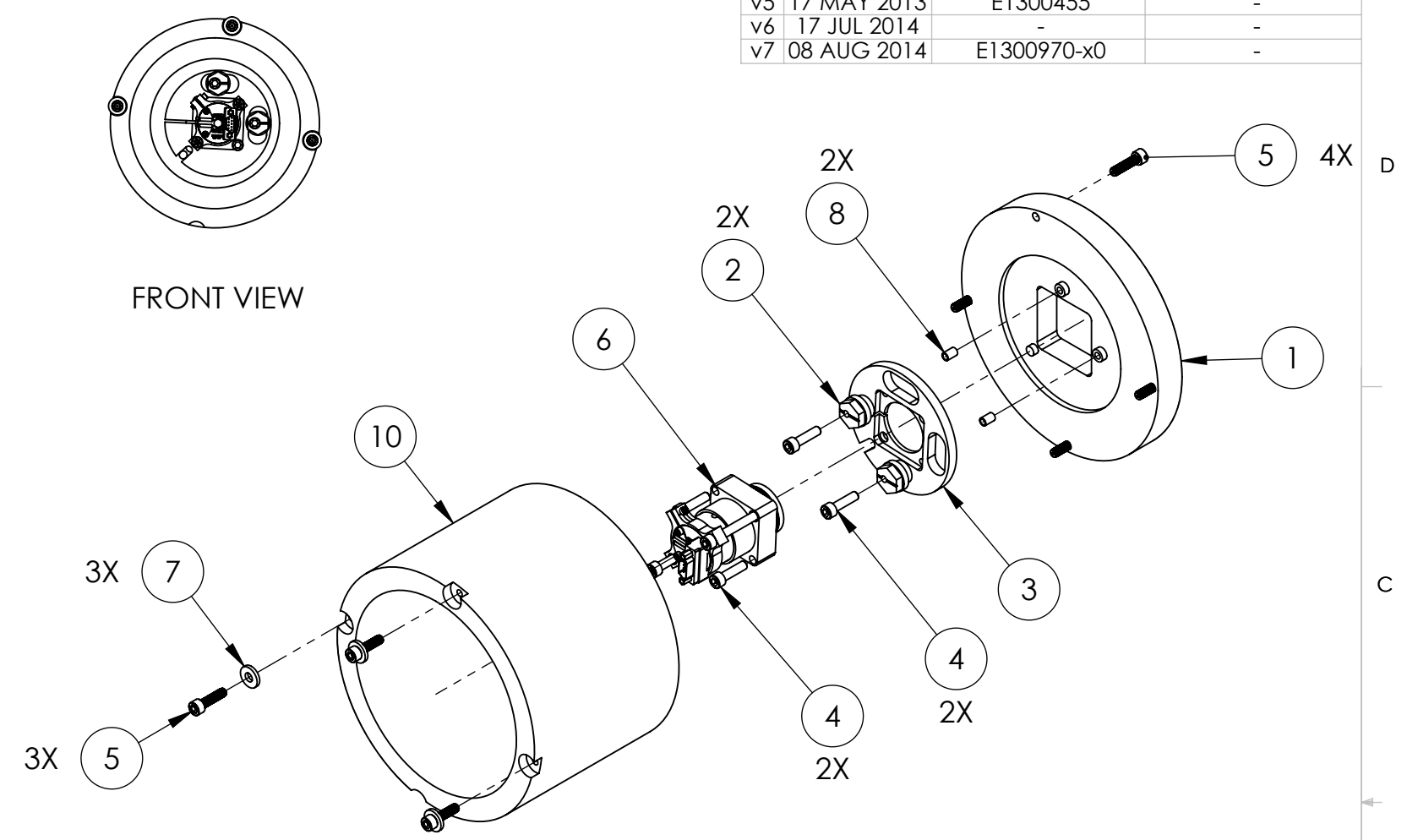
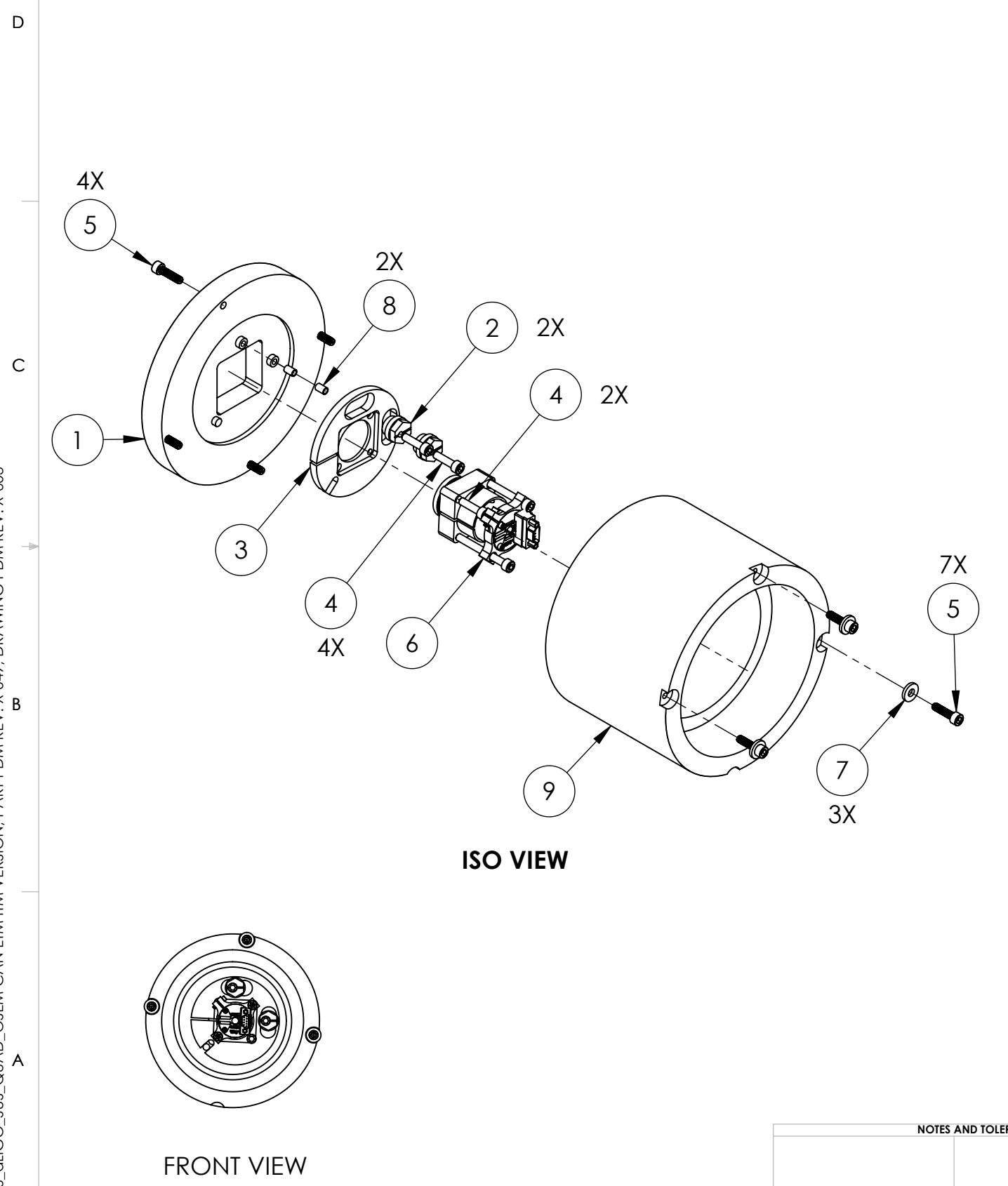


D080166_alIGO_SUS_QUAD_OSEM_CAN_ETM_ITM_VERSION, PART PDM REV: X-049, DRAWING PDM REV: X-003

ITM

REV.	DATE	DCN #	DRAWING TREE #
v5	17 MAY 2013	E1300455	-
v6	17 JUL 2014	-	-
v7	08 AUG 2014	E1300970-x0	-



ITEM NO.	PART NUMBER	DESCRIPTION	MATERIAL	ITM QTY.	ETM QTY.
10	D080168	ALIGO, SUS, PENRE ETM QUAD N-PTYPE, CAN BODY, ETM PEN RE MASS CAN	304 SSTL	-	1
9	D1002200	HEAVY ITM CAN BODY PEN RE ITM MASS CAN	304, 316 OR 302 SSTL	1	-
8	1185-2EN246 EMHART OR EQ.	HELICOIL, 8-32 X .246 LG.	-	2	2
7	MS16995-841	WASHER, FLAT #8	300 SSTL	3	3
6	D060349	PENRE ETM QUAD N-PTYPE BASE PLATE, OSEM ASSY	N/A	1	1
5	C-810-A UC COMPONENTS OR EQ.	SCREW, SHC, 8-32 X .63 LG., Ag PLATED (VENTED)	18-8 SSTL	7	7
4	92185A196	SHCS 8-32 X 5/8" LG	316 SSTL	4	2
3	D060348	OSEM TRANSLATION PLATE PEN RE MASS CAN	6061-T6 Al	1	1
2	D060336	ALIGO, SUS, Penre MASS Quad N-Ptype, 2MM CAM, OSEM ADJUSTER	PH BRONZE	2	2
1	D080167	CAN FRONT PLATE PEN RE MASS CAN	304, 316 OR 302 SSTL	1	1

NOTES AND TOLERANCES: (UNLESS OTHERWISE SPECIFIED)

MATERIAL		FINISH		NEXT ASSY		PART NAME		REV.	
N/A		N/A μinch		D060341		CALIFORNIA INSTITUTE OF TECHNOLOGY MASSACHUSETTS INSTITUTE OF TECHNOLOGY ADVANCED LIGO SUS		ISEN CAN ITM VERSION	
						DESIGNER DRAFTER CHECKER APPROVAL		JOD B. MOORE 22 AUG 2010 10 JUN 2013	
						SIZE DWG. NO. B		D080166	
						SCALE: NTS		PROJECTION:	
								SHEET 1 OF 1	