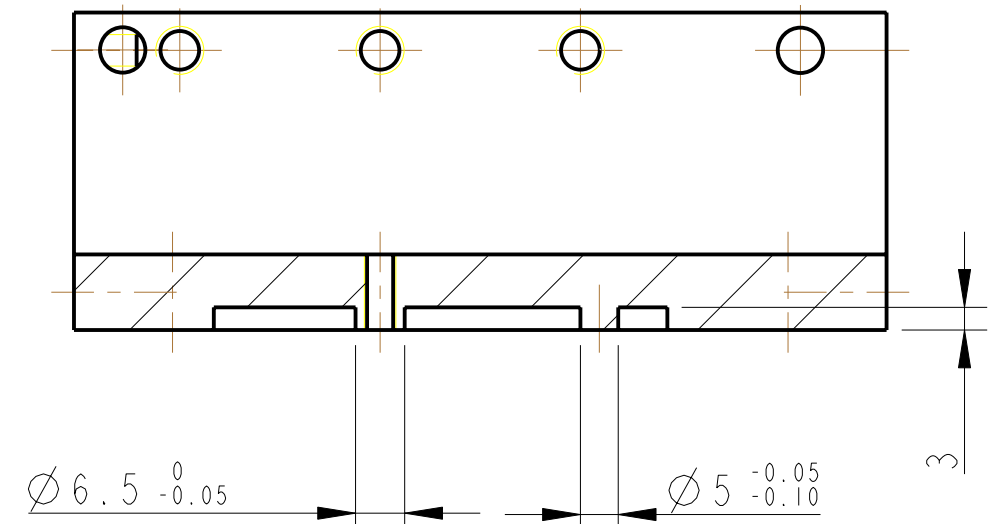


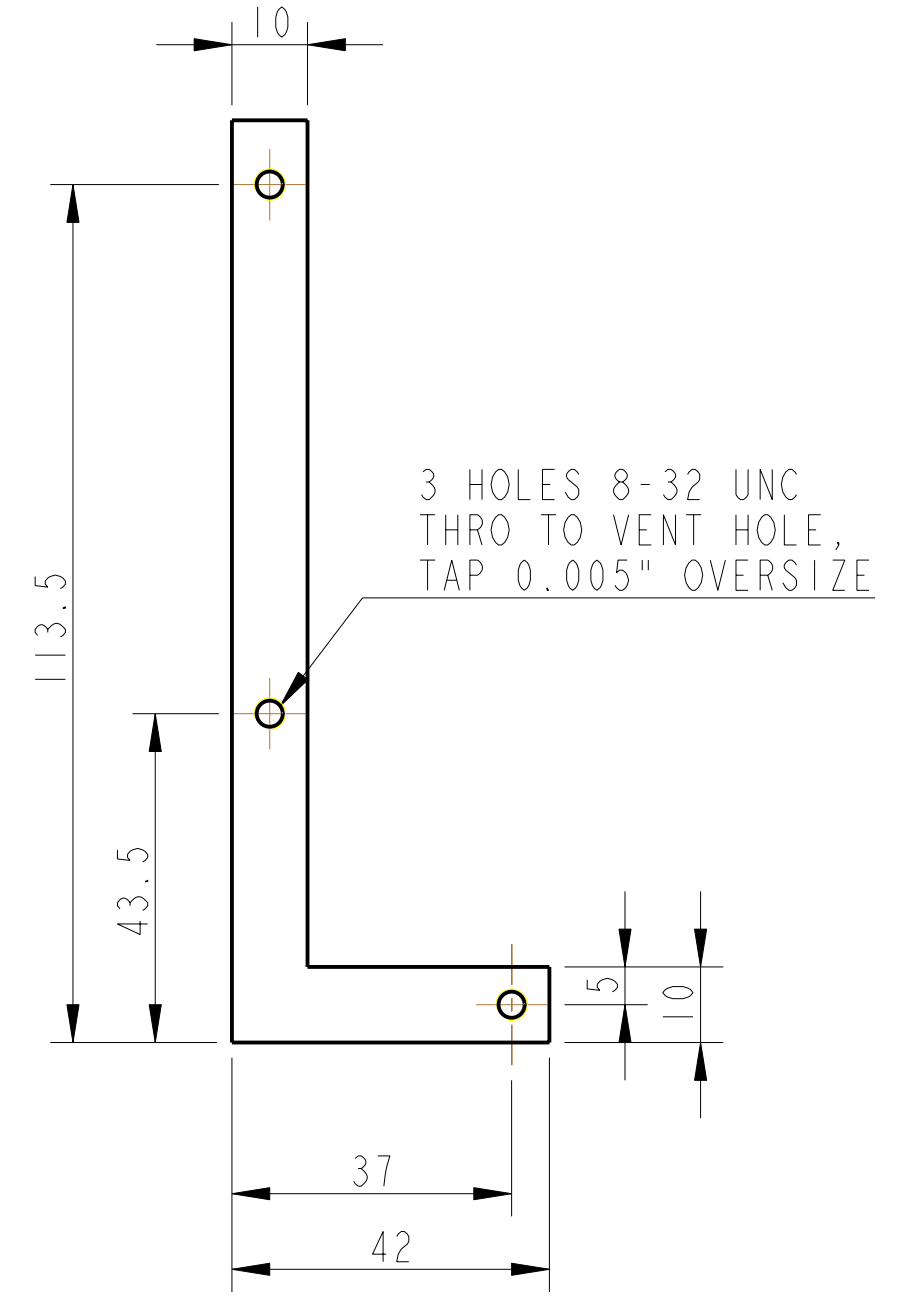
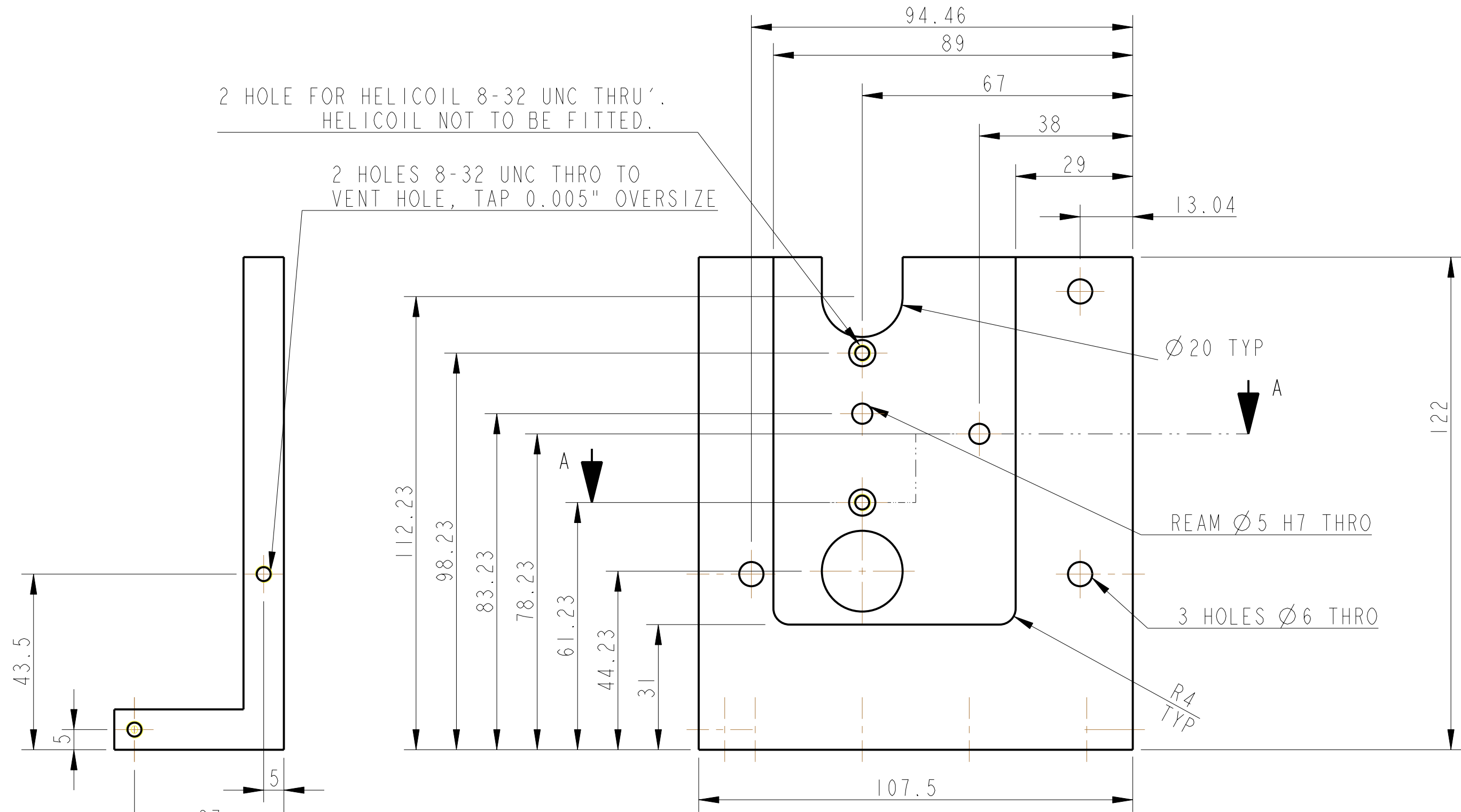
REV.	DATE	DCN #	DRAWING TREE #
B	21/DEC/07	E060260-B	
C	22/JULY/08	E080372	



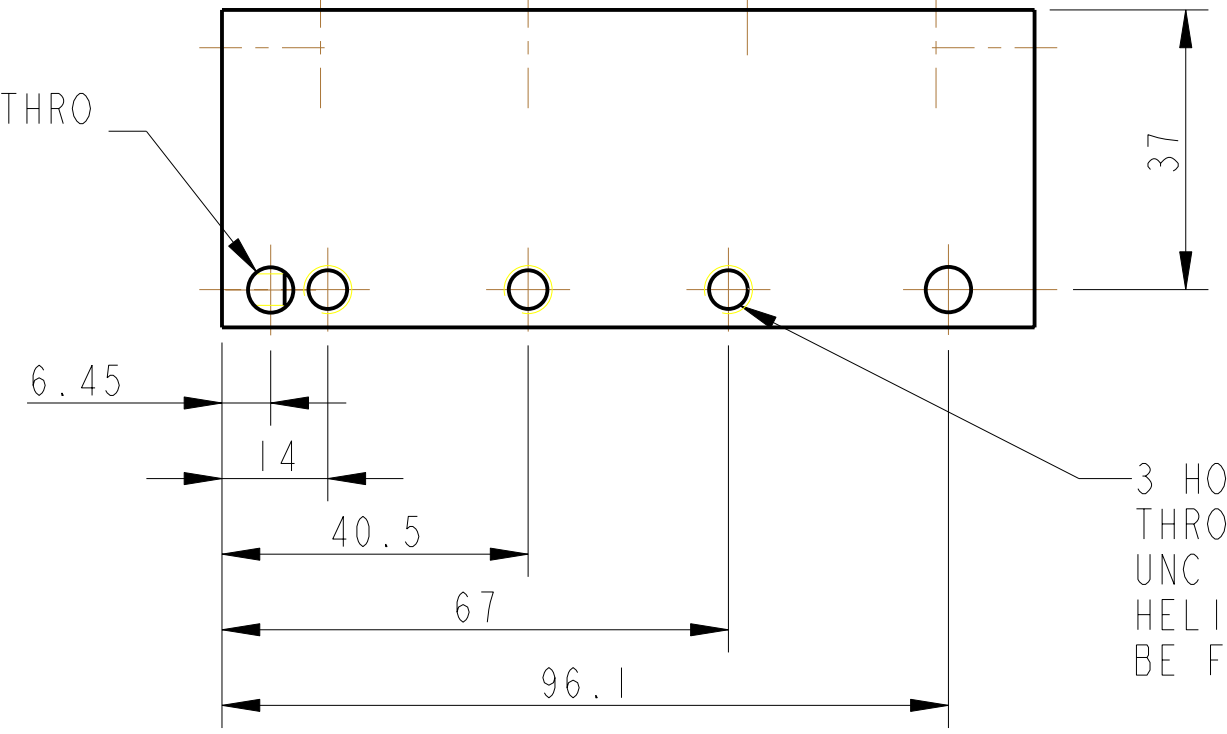
SECTION A-A

2 HOLE FOR HELICOIL 8-32 UNC THRU'.
HELICOIL NOT TO BE FITTED.

2 HOLES 8-32 UNC THRU TO
VENT HOLE, TAP 0.005" OVERSIZE



2 HOLES Ø6 THRO



NOTES: (UNLESS OTHERWISE SPECIFIED)

- REMOVE ALL SHARP EDGES, R.02 MIN.
- DO NOT SCALE FROM DRAWING.
- ALL MACHINING FLUIDS SHALL BE WATER SOLUBLE AND FREE OF SULFUR, CHLORINE AND SILICONE, SUCH AS CINCINNATI MILACRON'S CIMTECH 410 (STAINLESS STEEL).
- SCRIBE, ENGRAVE OR STAMP DRAWING PART NUMBER ON NOTED SURFACE OF PART AND A THREE DIGIT SERIAL NUMBER. SERIAL NUMBERS START AT 001 FOR THE FIRST PART AND PROCEED CONSECUTIVELY. USE .07" HIGH CHARACTERS. EXAMPLE: D020188-001. A VIBRATORY TOOL MAY BE USED.

DIMENSIONS ARE IN mm (INCHES) TOLERANCES:
X.XX ± mm (INCHES)
ANGULAR ±0.25°

MATERIAL: AL ALLOY 6061

FINISH: CLEAN AND DEGREASED
Ra = 1.6

DRAWN	I WILMUT	29/NOV/07
CHECKED	MB	15/MAR/10
APPROVED	JOD	15/MAR/10

CALIFORNIA INSTITUTE OF TECHNOLOGY
GLASGOW UNIVERSITY GEO 600 GROUP
RUTHERFORD APPLETON LABORATORIES

SYSTEM: aLIGO
SUB-SYSTEM: SUS
NEXT ASSY: QUAD LOWER STRUCTURE
PART NAME: REACTION CHAIN UIM STOP
RIGHT HAND
DRG. NO.: D070547
SCALE: 1:1 PROJECTION: FIRST ANGLE SHEET 1 OF 1