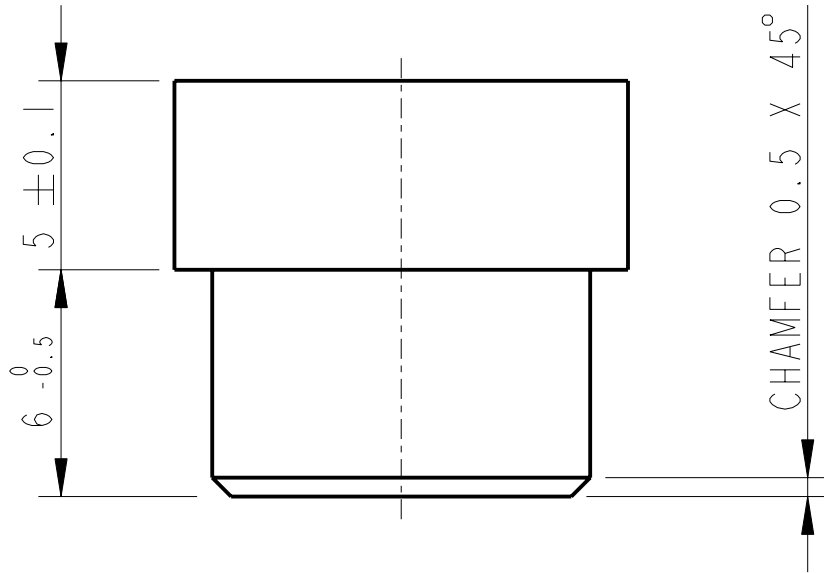


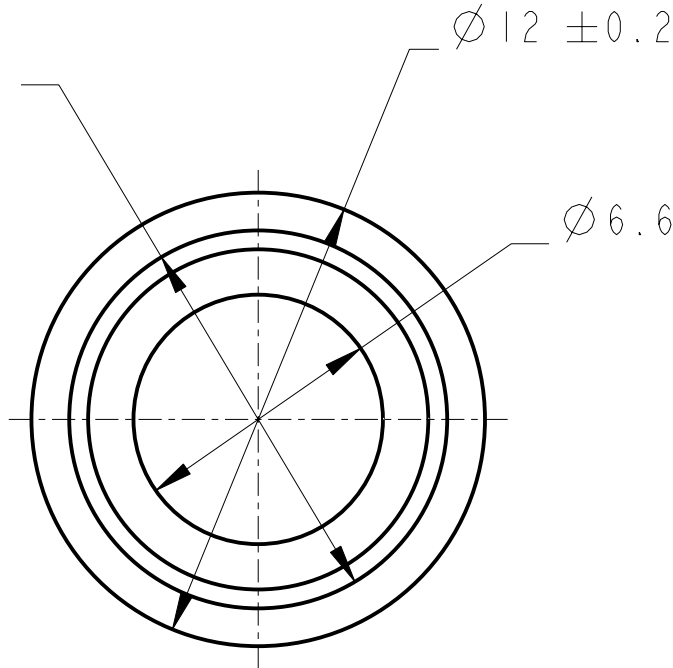
REV.	DATE	DCN #	DRAWING TREE #
A	30-OCT-06	E060260-00	.
B	21/DEC/07	E060260-B	.



Ø 10 <sup>+0.029</sup>/<sub>-0.018</sub> (p6)

Ø 12 ± 0.2

Ø 6.6 <sup>+0.2</sup>/<sub>0</sub>



NOTES: (UNLESS OTHERWISE SPECIFIED)

1. REMOVE ALL SHARP EDGES, R.02 MIN.
2. DO NOT SCALE FROM DRAWING.
3. ALL MACHINING FLUIDS SHALL BE WATER SOLUBLE AND FREE OF SULFUR, CHLORINE AND SILICONE, SUCH AS CINCINNATI MILACRON'S CIMTECH 410 (STAINLESS STEEL)
4. SCRIBE, ENGRAVE OR STAMP DRAWING PARTNUMBER ON NOTED SURFACE OF PART AND A THREE DIGIT SERIAL NUMBER. SERIAL NUMBERS START AT 001 FOR THE FIRST PART AND PROCEED CONSECUTIVELY. USE .07" HIGH CHARACTERS. EXAMPLE: D020188- 001. A VIBRATORY TOOL MAY BE USED.

DIMENSIONS ARE IN mm [INCHES]  
TOLERANCES:  
X.XX ± 0.2 mm °  
ANGULAR ± 0.25 °

MATERIAL: AL ALLOY  
5083 OR SIMILAR

FINISH: CLEAN AND DEGREASED  
√μm [μin] Ra = 1.6

	NAME	DATE
DRAWN	I WILMUT	15/Jan/07
CHECKED	IW	15/JAN/07
APPROVED	IW	15/JAN/07

 CALIFORNIA INSTITUTE OF TECHNOLOGY  
MASSACHUSETTS INSTITUTE OF TECHNOLOGY  
IGR, GLASGOW UNIVERSITY GEO 600 GROUP  
RUTHERFORD APPLETON LABORATORIES

SYSTEM **ADVANCED LIGO**

SUB-SYSTEM **SUS**

NEXT ASSY **QUAD N-PTYPE LOWER STRUCTURE**

PART NAME **SPACING PLUG  
LOWER STRUCTURE**

SIZE **A** DRG. NO. **D070008** REV **B.**