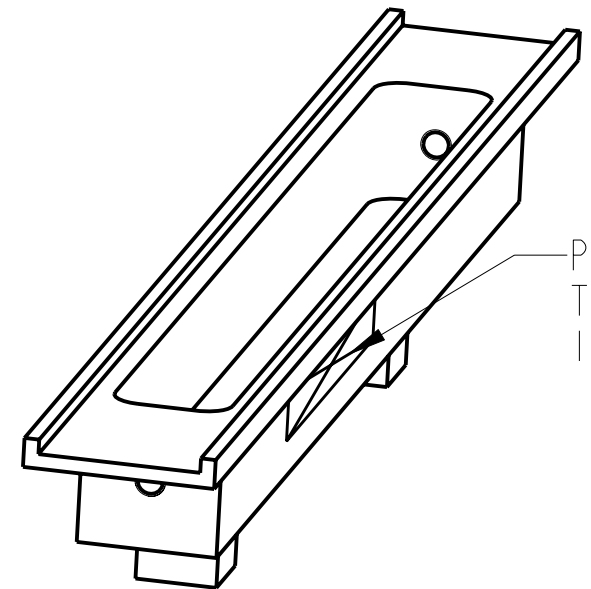
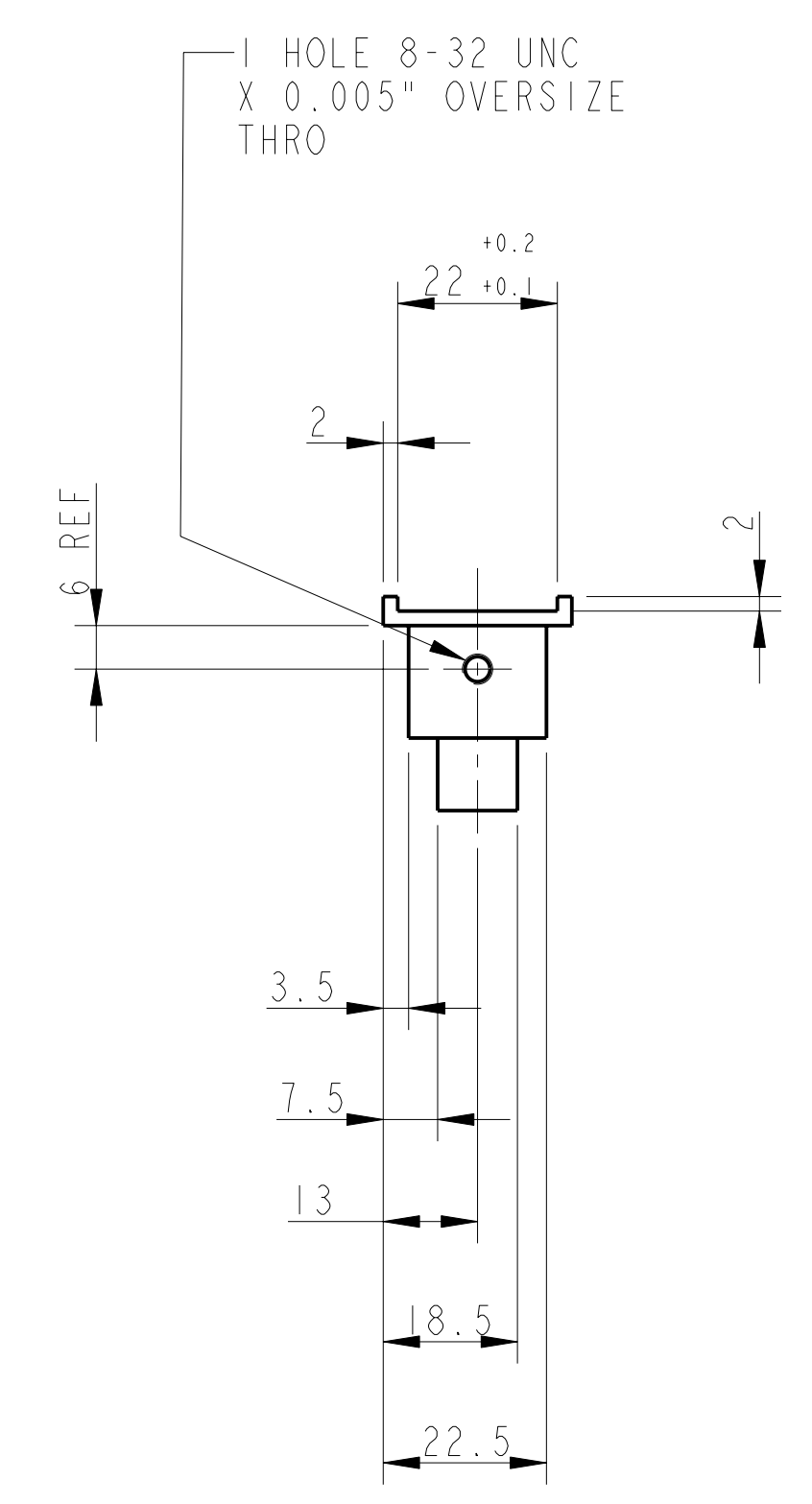
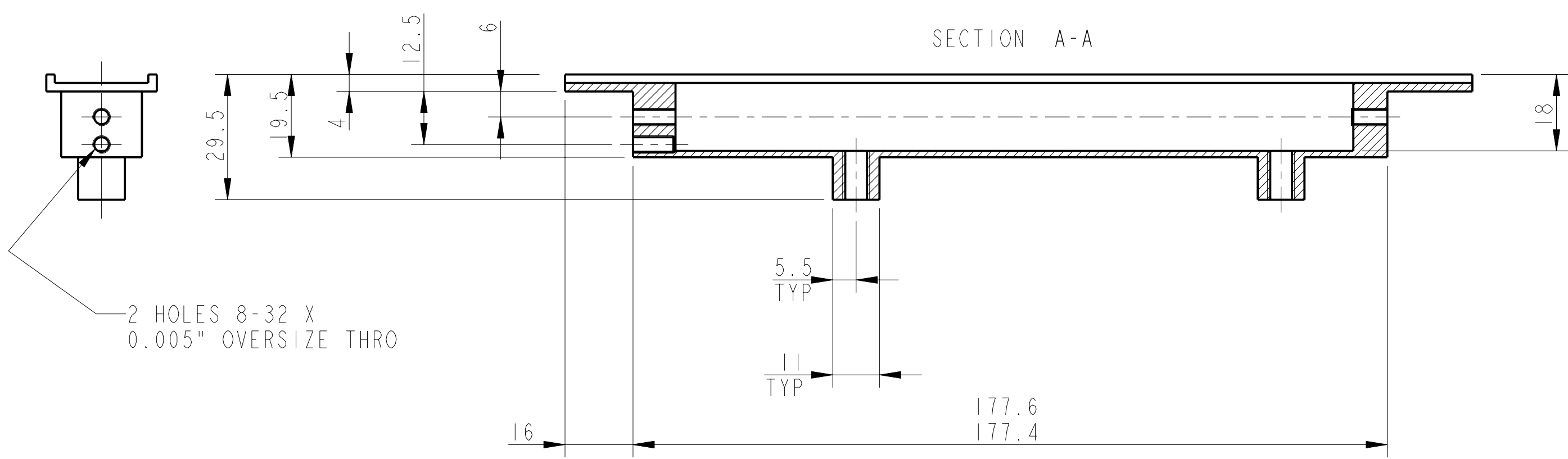
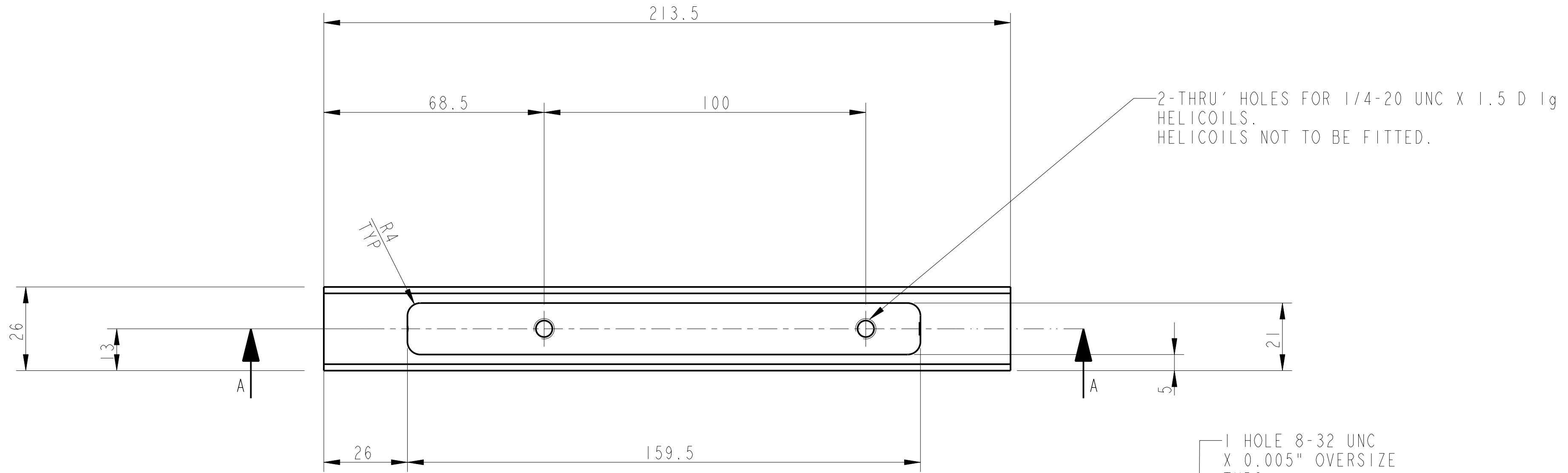


REV.	DATE	DCN #	DRAWING TREE #
A	30-OCT-06	E060260-00	
B	21/DEC/07	E060260-B	



PART NO. (SEE NOTE 4)  
TO BE ETCHED OR STAMPED  
IN APPROX POSITION SHOWN.

NOTES: (UNLESS OTHERWISE SPECIFIED)

- REMOVE ALL SHARP EDGES, R. 0.2 MIN.
- DO NOT SCALE FROM DRAWING.
- ALL MACHINING FLUIDS SHALL BE WATER SOLUBLE AND FREE OF SULFUR, CHLORINE AND SILICONE, SUCH AS CINCINNATI MILACRON'S CIMTECH 410 (STAINLESS STEEL).
- SCRIBE, ENGRAVE OR STAMP DRAWING PART NUMBER ON NOTED SURFACE OF PART AND A THREE DIGIT SERIAL NUMBER. SERIAL NUMBERS START AT 001 FOR THE FIRST PART AND PROCEED CONSECUTIVELY. USE .07" HIGH CHARACTERS. EXAMPLE: D020188-001. A VIBRATORY TOOL MAY BE USED.

DIMENSIONS ARE IN mm (INCHES) TOLERANCES:  
X.XX ± 0.2 mm (INCHES)  
ANGULAR ± 0.25°

MATERIAL: AL. ALLOY 5083 H4 OR 6061

FINISH: CLEAN  
Ra = 1.6

NAME	DATE
DRAWN NJS/FEL	17/JULY/06
CHECKED J'OD	--/--/--
APPROVED IW	--/--/--

SCALE: 1:1 PROJECTION: SHEET 1 OF 1

CALIFORNIA INSTITUTE OF TECHNOLOGY  
GLASGOW UNIVERSITY GEO 600 GROUP  
RUTHERFORD APPLETON LABORATORIES

SYSTEM: **ADVANCED LIGO**  
SUB-SYSTEM: **SUS**  
NEXT ASSY: **QUAD N-PTYPE LOWER STRUCTURE**  
PART NAME: **PENULTIMATE MASS LWR STOP MT 2**  
DRG. NO.: **D060478**