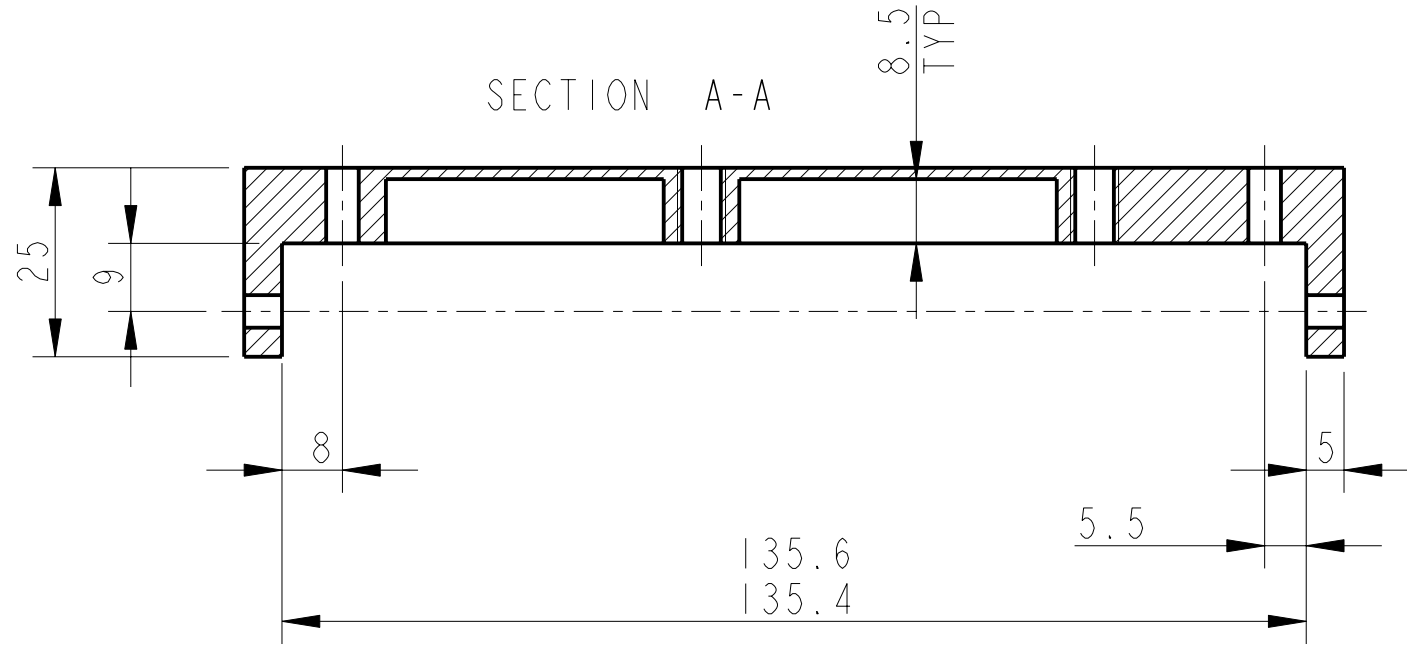


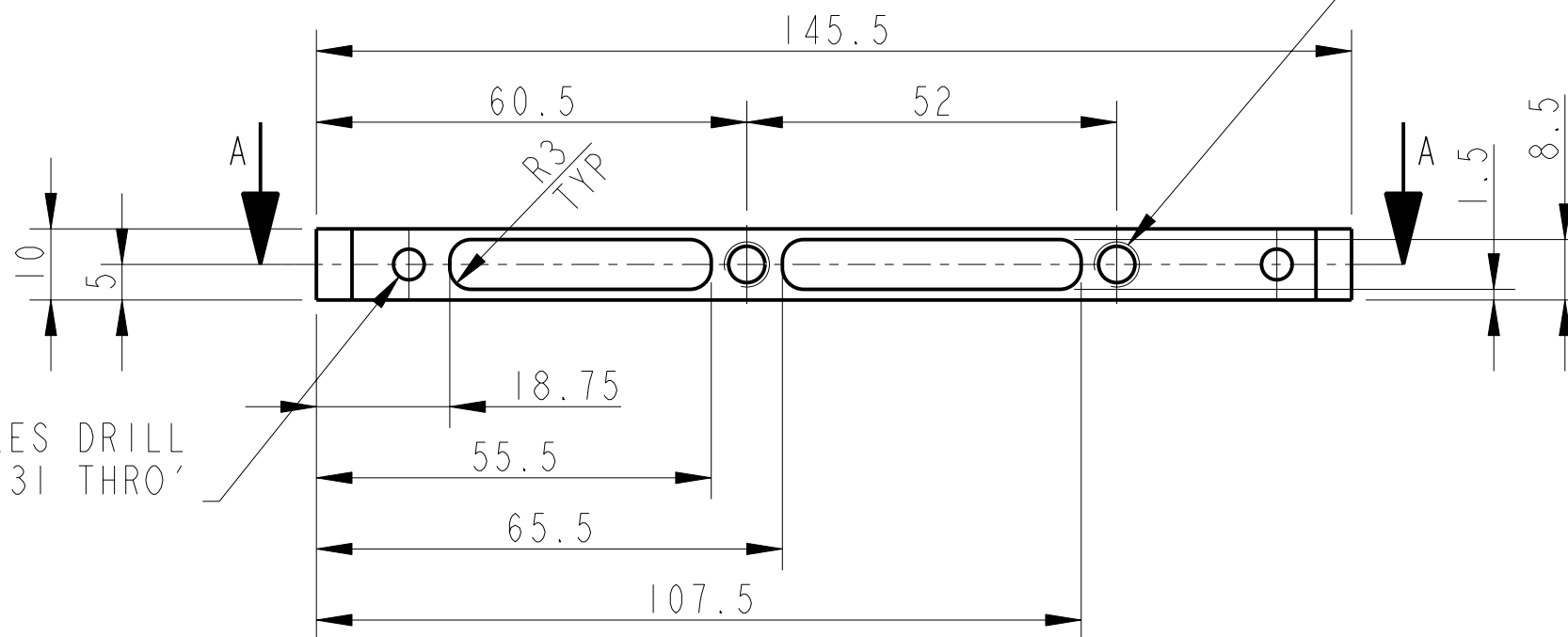
REV.	DATE	DCN #	DRAWING TREE #
A	30-OCT-06	E060260-00	
B	21/DEC/07	E060260-B	
C	22/JULY/08	E080372	

SECTION A-A

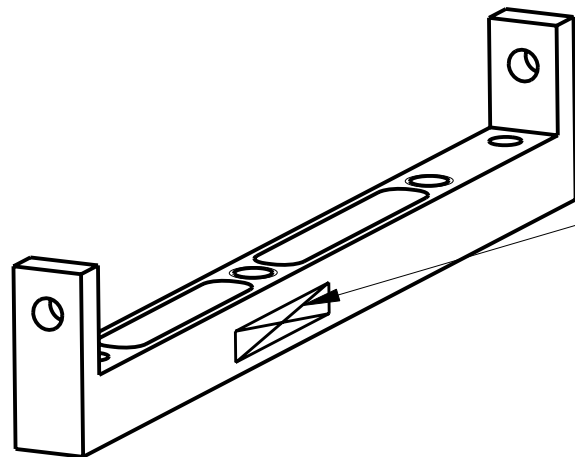
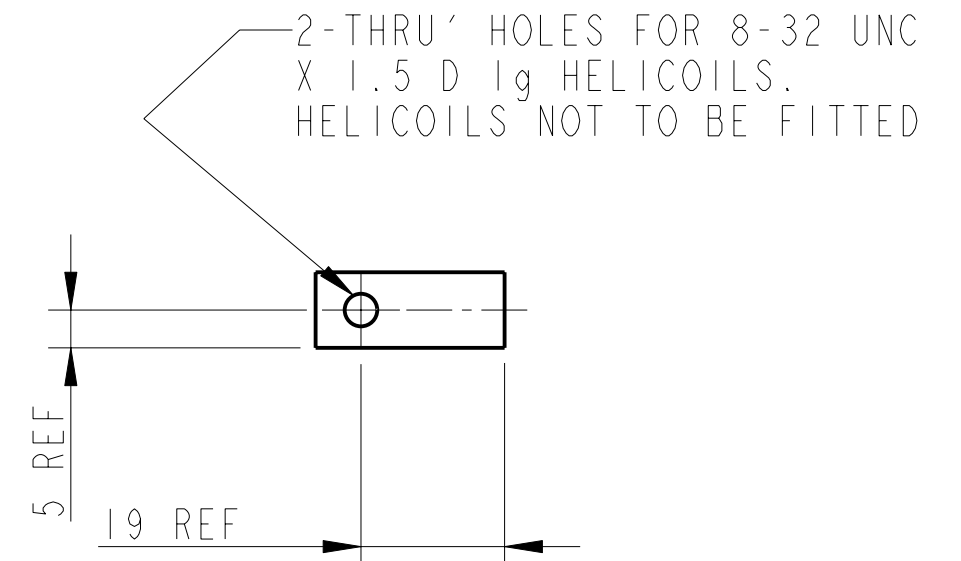


2-THRU' HOLES FOR 1/4-20 UNC X 1.5 D 1g HELICOILS. HELICOILS NOT TO BE FITTED.

2-THRU' HOLES FOR 8-32 UNC X 1.5 D 1g HELICOILS. HELICOILS NOT TO BE FITTED



2 HOLES DRILL Ø4.31 THRO'



PART NO. (SEE NOTE 4) TO BE ETCHED OR STAMPED IN APPROX POSITION SHOWN.

NOTES: (UNLESS OTHERWISE SPECIFIED)			CALIFORNIA INSTITUTE OF TECHNOLOGY MASSACHUSETTS INSTITUTE OF TECHNOLOGY IGR, GLASGOW UNIVERSITY GEO 600 GROUP RUTHERFORD APPLETON LABORATORIES	
1. REMOVE ALL SHARP EDGES, R.02 MIN.	DIMENSIONS ARE IN mm [INCHES]		SYSTEM <b>ADVANCED LIGO</b>	
2. DO NOT SCALE FROM DRAWING.	TOLERANCES:		SUB-SYSTEM <b>SUS</b>	
3. ALL MACHINING FLUIDS SHALL BE WATER SOLUBLE AND FREE OF SULFUR, CHLORINE AND SILICONE, SUCH AS CINCINNATI MILACRON'S CIMTECH 410 (STAINLESS STEEL)	X.XX ±0.2 mm ANGULAR ±0.25 °		NEXT ASSY <b>QUAD N-PTYPE LOWER STRUCTURE</b>	
4. SCRIBE, ENGRAVE OR STAMP DRAWING PART NUMBER ON NOTED SURFACE OF PART AND A THREE DIGIT SERIAL NUMBER. SERIAL NUMBERS START AT 001 FOR THE FIRST PART AND PROCEED CONSECUTIVELY. USE .07" HIGH CHARACTERS. EXAMPLE: D020188- 001. A VIBRATORY TOOL MAY BE USED.	MATERIAL: AL ALLOY 5083 H4 OR 6061		PART NAME <b>EARTHQUAKE-STOP MOUNTS-SHORT LOWER STRUCTURE</b>	
	FINISH: CLEAN √µm [µin] Ra = 1.6		SCALE 1:1	
	NAME	DATE	DRG. NO.	REV
	DRAWN NJS/FEL	13/JULY/06	<b>D060476</b>	<b>C.</b>
	CHECKED AJB	9/JUNE/08		
	APPROVED AJB	22/JULY/08		
PROJECTION:			SHEET 1 OF 1	