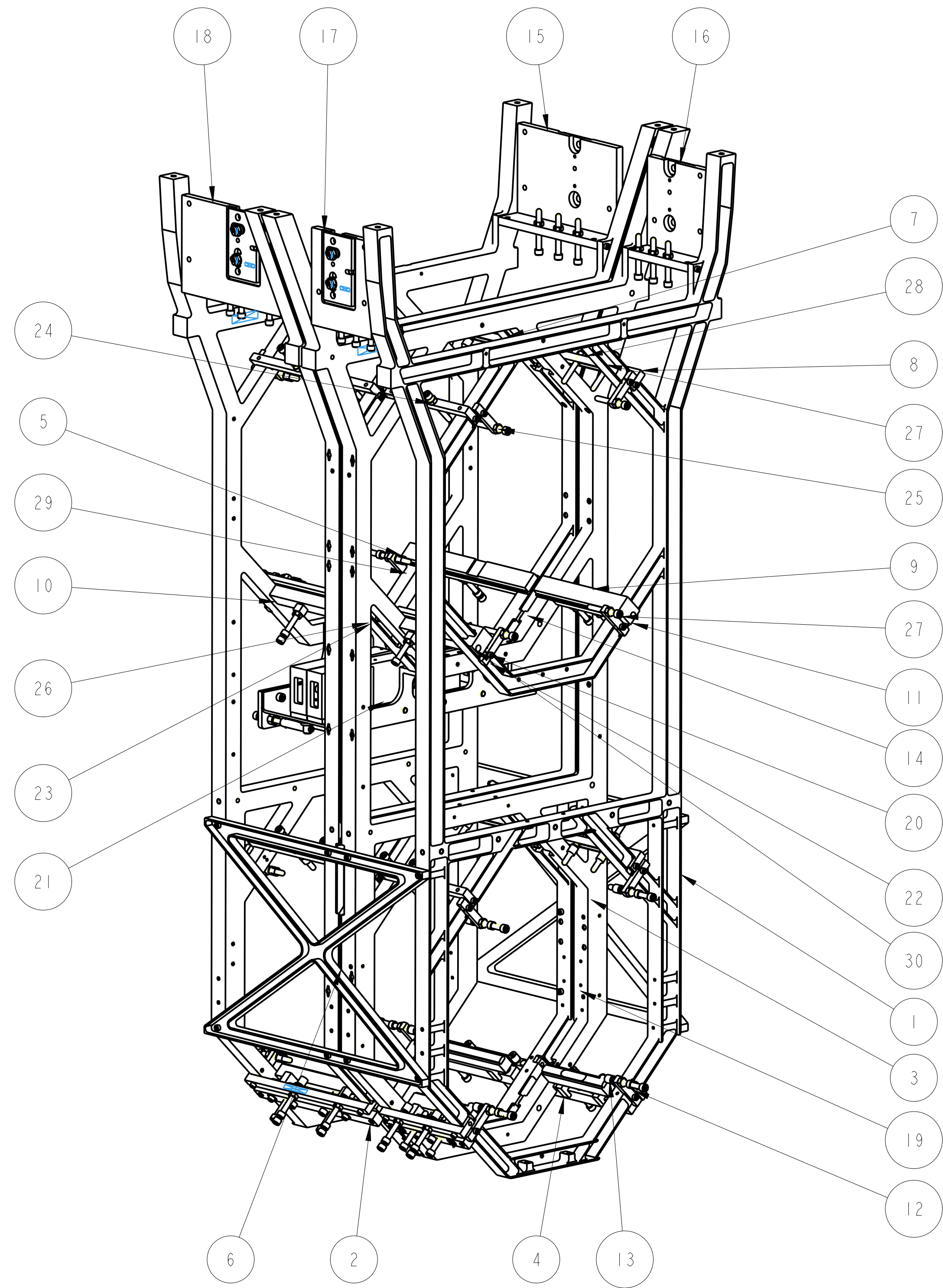


REV.	DATE	DCN #	DRAWING TREE #
A	30-OCT-06	E060260-00	
B	21/DEC/07	E060260-B	



ITEM	QTY	SPARE	TOTAL	PART NUMBER	DESCRIPTION	MATERIALS
1	2			D060434	OUTER FACE PLATE; LOWER STRUCTURE	ALUMINIUM ALLOY: 6082
2	2			D060446	ADJUSTABLE PAD ASSEMBLY; LONG	AS DRW: SEE PARTS LIST
3	2			D060455	LOWER STRUCTURE X-BRACE; LOWER STRUCTURE	AL ALLOY: 5083 OR SIMILAR
4	2			D060457	ADJUSTABLE PAD ASSEMBLY SHORT; .	SEE PARTS LIST: -----
5	2			D060461	PEN TEST MASS PAD; .	PFA 440 HP: -----
6	2			D060462	INNER FACE PLATE; LOWER STRUCTURE	ALUMINIUM ALLOY: 6082
7	6			D060475	EARTHQUAKE-STOP MOUNTS-LONG; LOWER STRUCTURE	AL ALLOY: 5083 H4 OR 6061
8	6			D060476	EARTHQUAKE-STOP MOUNTS-SHORT; LOWER STRUCTURE	AL ALLOY: 5083 H4 OR 6061
9	2			D060477	PENULTIMATE MASS LWR STOP MT 1; .	AL. ALLOY: 5083 H4 OR 6061
10	2			D060478	PENULTIMATE MASS LWR STOP MT 2; .	AL. ALLOY: 5083 H4 OR 6061
11	2			D060479	PEN RE MASS PAD; .	PFA 440 HP: -----
12	16			D060481	ROUND MASS FRONT STOP; .	AL. ALLOY: 5083 H4 OR 6061
13	36			D060544	EARTHQUAKE STOP ASSY; .	N/A: -----
14	8			D070008	SPACING PLUG; LOWER STRUCTURE	AL ALLOY: 5083 OR SIMILAR
15	1			D070540	UIM TC E'QUAKE STOP ASSY #1; .	AS DRW: AS DRW
16	1			D070541	UIM RC E'QUAKE STOP ASSY #1; .	AS DRW: AS DRW
17	1			D070542	UIM RC E'QUAKE STOP ASSY #2; .	AS DRW: AS DRW
18	1			D070543	UIM TC E'QUAKE STOP ASSY #2; .	AS DRW: AS DRW
19	4			D090438	RINGHEATER ATTACHMENT PIECE; QUAD LOWER STRUCTURE	AL ALLOY: 5083
20	4			D1000199	SECURING PIN ASSEMBLY; VIOLIN - MODE DETECTOR	SEE DETAILS: -----
21	1			D1000200	DETECTOR CRADLE ASSEMBLY; VIOLIN - MODE DETECTOR	SEE DETAILS: -----
22	4				1/4 20 UNC NUT; .	
23	7				1/4" 20 UNC WASHER; .	
24	62				1/4-20 x 1.5D UNC THREAD INSERT; .	
25	16				1/4-20 x 1D UNC THREAD INSERT; .	
26	3				1/4" 20 UNC X 0.5" CAP HEAD; .	
27	48				1/4" 20 UNC X 2" CAP HEAD, SPHERICAL TIP; .	
28	60				1/4 20 UNC NUT; .	
29	36				8-32 x 1.5D UNC THREAD INSERT; .	
30	80				8-32 UNC X 0.625" CAP HEAD; .	

NOTES: (UNLESS OTHERWISE SPECIFIED)

- REMOVE ALL SHARP EDGES, R.02 MIN.
- DO NOT SCALE FROM DRAWING.
- ALL MACHINING FLUIDS SHALL BE WATER SOLUBLE AND FREE OF SULFUR, CHLORINE AND SILICONE, SUCH AS CINCINNATI MILACRON'S CIMTECH 410 (STAINLESS STEEL)
- SCRIBE, ENGRAVE OR STAMP DRAWING PART NUMBER ON NOTED SURFACE OF PART AND A THREE DIGIT SERIAL NUMBER. SERIAL NUMBERS START AT 001 FOR THE FIRST PART AND PROCEED CONSECUTIVELY. USE .07" HIGH CHARACTERS. EXAMPLE: D020188-001. A VIBRATORY TOOL MAY BE USED.

DIMENSIONS ARE IN mm [INCHES] TOLERANCES:
 X.XX ± mm [INCHES]
 ANGULAR ± °

MATERIAL: AS DRW
 FINISH: CLEAN
 Ra: AS DRW

NAME	DATE
DRAWN J O'DELL	16/AUG/06
CHECKED MB	15/MAR/10
APPROVED JOD	15/MAR/10

SCALE: 1:1 PROJECTION: SHEET 1 OF 1

CALIFORNIA INSTITUTE OF TECHNOLOGY
 MASSACHUSETTS INSTITUTE OF TECHNOLOGY
 GLASGOW UNIVERSITY GEO 600 GROUP
 RUTHERFORD APPLETON LABORATORIES

SYSTEM: aLIGO
 SUB-SYSTEM: SUS
 NEXT ASSY: QUAD
 PART NAME: INNER LOWER STRUCTURE
 DRG. NO.: D060454