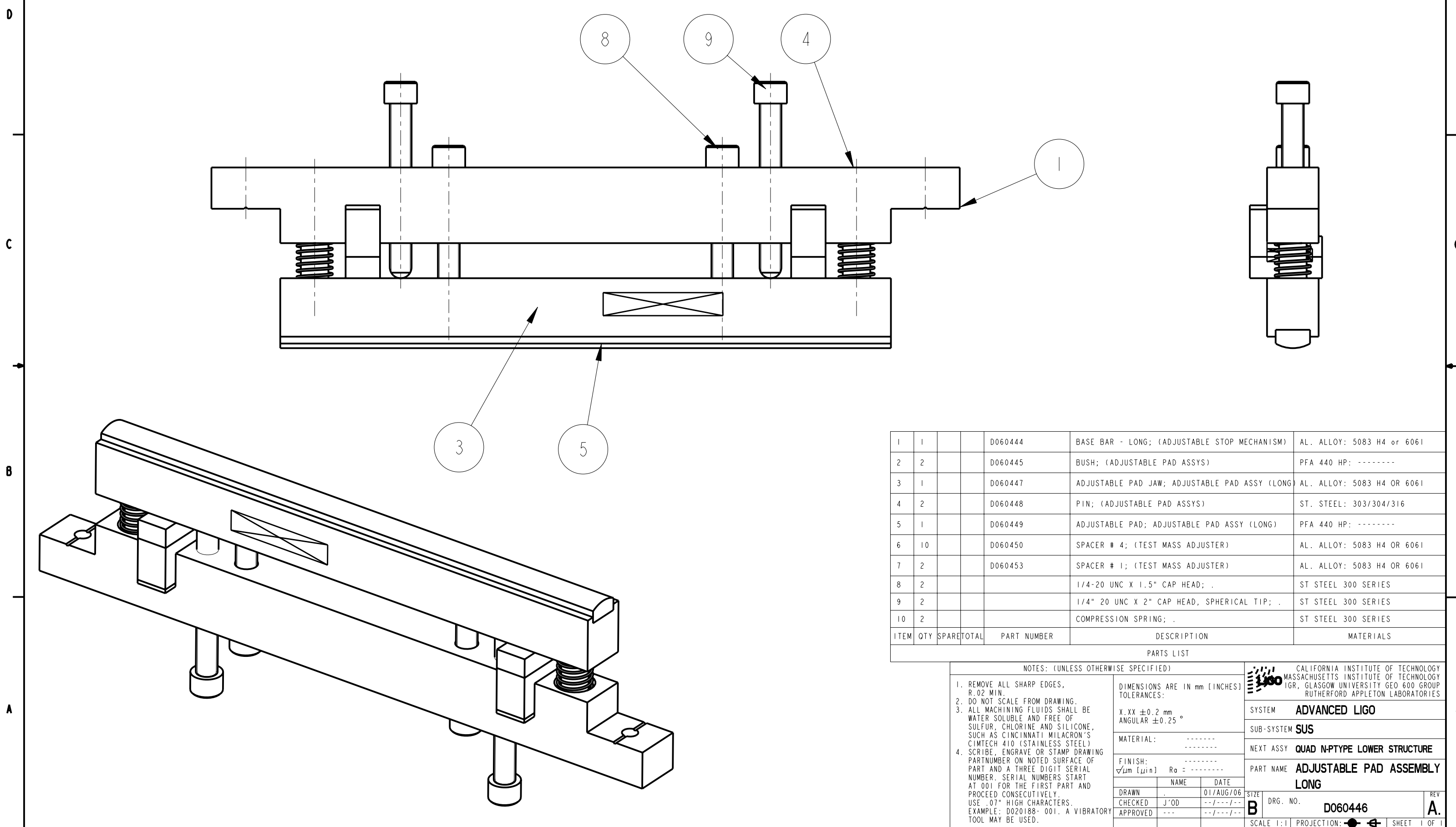


REV.	DATE	DCN #	DRAWING TREE #
A	30-OCT-06	E060260-00	



ITEM	QTY	SPARE	TOTAL	PART NUMBER	DESCRIPTION	MATERIALS
1	1			D060444	BASE BAR - LONG; (ADJUSTABLE STOP MECHANISM)	AL. ALLOY: 5083 H4 or 6061
2	2			D060445	BUSH; (ADJUSTABLE PAD ASSYS)	PFA 440 HP: -----
3	1			D060447	ADJUSTABLE PAD JAW; ADJUSTABLE PAD ASSY (LONG)	AL. ALLOY: 5083 H4 OR 6061
4	2			D060448	PIN; (ADJUSTABLE PAD ASSYS)	ST. STEEL: 303/304/316
5	1			D060449	ADJUSTABLE PAD; ADJUSTABLE PAD ASSY (LONG)	PFA 440 HP: -----
6	10			D060450	SPACER # 4; (TEST MASS ADJUSTER)	AL. ALLOY: 5083 H4 OR 6061
7	2			D060453	SPACER # 1; (TEST MASS ADJUSTER)	AL. ALLOY: 5083 H4 OR 6061
8	2				1/4-20 UNC X 1.5" CAP HEAD; .	ST STEEL 300 SERIES
9	2				1/4" 20 UNC X 2" CAP HEAD, SPHERICAL TIP; .	ST STEEL 300 SERIES
10	2				COMPRESSION SPRING; .	ST STEEL 300 SERIES

PARTS LIST

NOTES: (UNLESS OTHERWISE SPECIFIED)

- REMOVE ALL SHARP EDGES, R.02 MIN.
- DO NOT SCALE FROM DRAWING.
- ALL MACHINING FLUIDS SHALL BE WATER SOLUBLE AND FREE OF SULFUR, CHLORINE AND SILICONE, SUCH AS CINCINNATI MILACRON'S CIMTECH 410 (STAINLESS STEEL)
- SCRIBE, ENGRAVE OR STAMP DRAWING PART NUMBER ON NOTED SURFACE OF PART AND A THREE DIGIT SERIAL NUMBER. SERIAL NUMBERS START AT 001 FOR THE FIRST PART AND PROCEED CONSECUTIVELY. USE .07" HIGH CHARACTERS. EXAMPLE: D020188- 001. A VIBRATORY TOOL MAY BE USED.

DIMENSIONS ARE IN mm [INCHES]
TOLERANCES:

X.XX ±0.2 mm
ANGULAR ±0.25 °

MATERIAL: -----

FINISH:
√μm [μin] Ra = -----

	NAME	DATE
DRAWN		01/AUG/06
CHECKED	J'OD	--/--/--
APPROVED	---	--/--/--

1300 CALIFORNIA INSTITUTE OF TECHNOLOGY
MASSACHUSETTS INSTITUTE OF TECHNOLOGY
1GR, GLASGOW UNIVERSITY GEO 600 GROUP
RUTHERFORD APPLETON LABORATORIES

SYSTEM **ADVANCED LIGO**
SUB-SYSTEM **SUS**
NEXT ASSY **QUAD N-PTYPE LOWER STRUCTURE**
PART NAME **ADJUSTABLE PAD ASSEMBLY LONG**

SIZE **B** DRG. NO. **D060446** REV **A.**
SCALE 1:1 PROJECTION: SHEET 1 OF 1