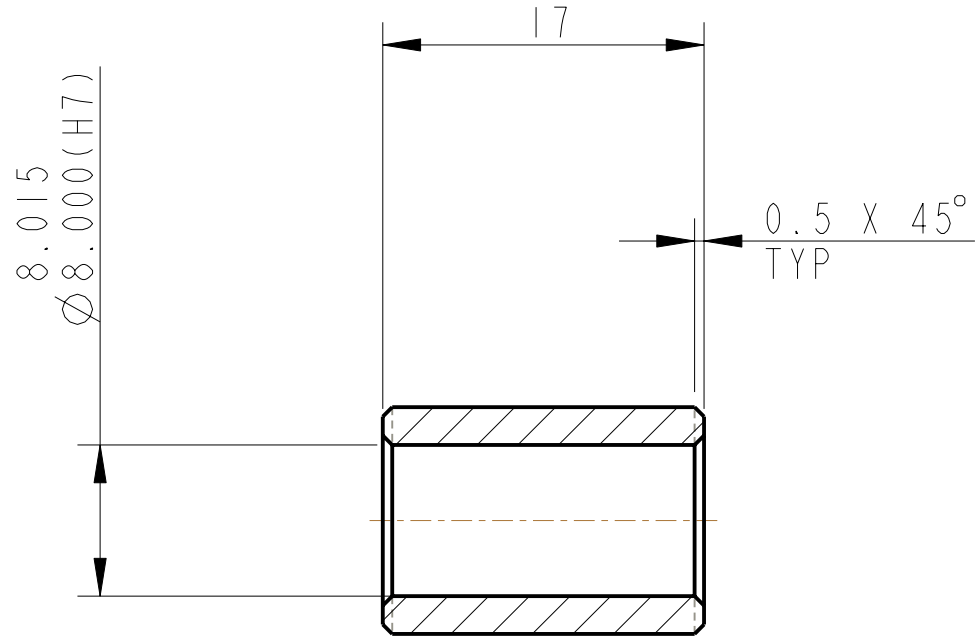
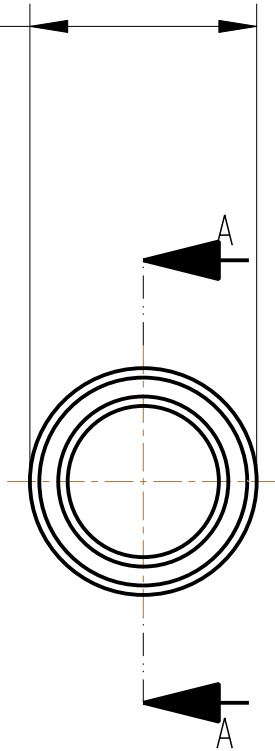


REV.	DATE	DCN #	DRAWING TREE #
A	30-OCT-06	E060260-00	.
B	21/DEC/07	E060260-B	.

12.029  
 $\varnothing$  12.018(P6)



SECTION A-A

NOTES: (UNLESS OTHERWISE SPECIFIED)

- REMOVE ALL SHARP EDGES, R.02 MIN.
- DO NOT SCALE FROM DRAWING.
- ALL MACHINING FLUIDS SHALL BE WATER SOLUBLE AND FREE OF SULFUR, CHLORINE AND SILICONE, SUCH AS CINCINNATI MILACRON'S CIMTECH 410 (STAINLESS STEEL)
- SCRIBE, ENGRAVE OR STAMP DRAWING PARTNUMBER ON NOTED SURFACE OF PART AND A THREE DIGIT SERIAL NUMBER. SERIAL NUMBERS START AT 001 FOR THE FIRST PART AND PROCEED CONSECUTIVELY. USE .07" HIGH CHARACTERS. EXAMPLE: D020188- 001. A VIBRATORY TOOL MAY BE USED.

DIMENSIONS ARE IN mm [INCHES]  
 TOLERANCES:

X.XX  $\pm$  0.2 mm  
 ANGULAR  $\pm$  0.25 °

MATERIAL: PFA 440 HP

FINISH: CLEAN  
 $R_a = 1.6$

	NAME	DATE
DRAWN	NJS/FEL	21/07/06
CHECKED	MB	15/MAR/10
APPROVED	JOD	15/MAR/10

CALIFORNIA INSTITUTE OF TECHNOLOGY  
 MASSACHUSETTS INSTITUTE OF TECHNOLOGY  
 1GR, GLASGOW UNIVERSITY GEO 600 GROUP  
 RUTHERFORD APPLETON LABORATORIES

SYSTEM	<b>aLIGO</b>
SUB-SYSTEM	<b>SUS</b>
NEXT ASSY	<b>QUAD LOWER STRUCTURE</b>
PART NAME	<b>BUSH (ADJUSTABLE PAD ASSYS)</b>

SIZE	DRG. NO.	REV
<b>A</b>	<b>D060445</b>	<b>C.</b>