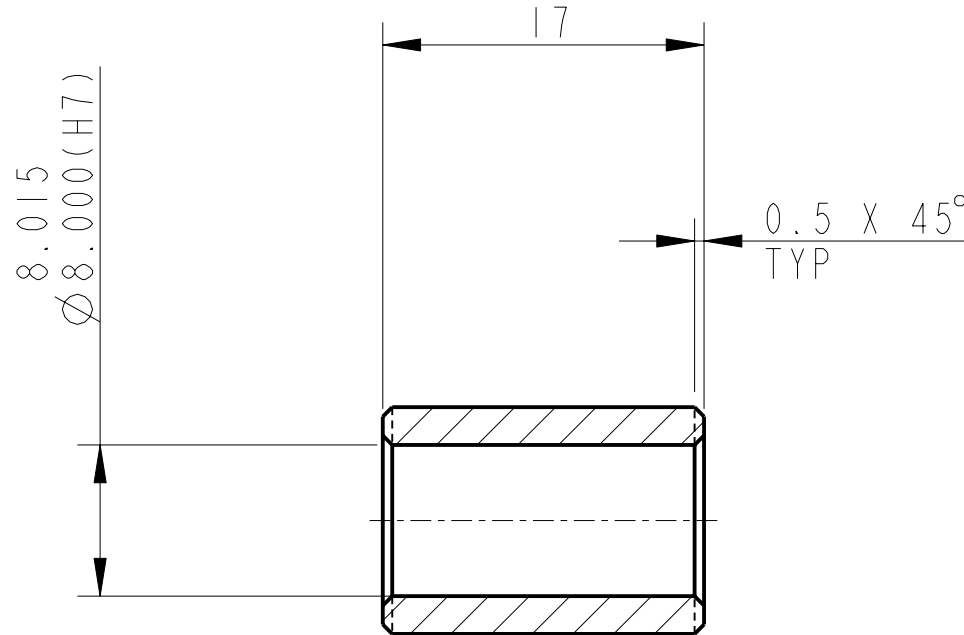
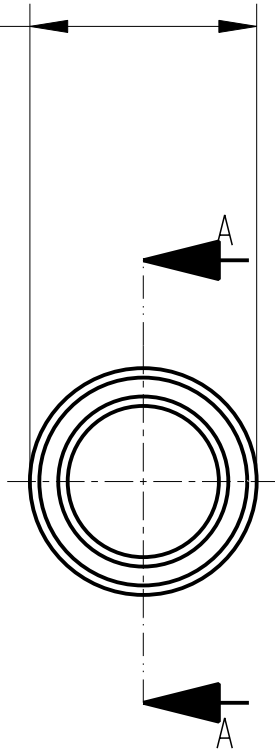


REV.	DATE	DCN #	DRAWING TREE #
A	30-OCT-06	E060260-00	

12.029  
 $\varnothing$  12.018(P6)



SECTION A-A

NOTES: (UNLESS OTHERWISE SPECIFIED)

1. REMOVE ALL SHARP EDGES, R.02 MIN.
2. DO NOT SCALE FROM DRAWING.
3. ALL MACHINING FLUIDS SHALL BE WATER SOLUBLE AND FREE OF SULFUR, CHLORINE AND SILICONE, SUCH AS CINCINNATI MILACRON'S CIMTECH 410 (STAINLESS STEEL)
4. SCRIBE, ENGRAVE OR STAMP DRAWING PARTNUMBER ON NOTED SURFACE OF PART AND A THREE DIGIT SERIAL NUMBER. SERIAL NUMBERS START AT 001 FOR THE FIRST PART AND PROCEED CONSECUTIVELY. USE .07" HIGH CHARACTERS. EXAMPLE: D020188- 001. A VIBRATORY TOOL MAY BE USED.

DIMENSIONS ARE IN mm [INCHES]  
 TOLERANCES:

X.XX  $\pm$  0.2 mm  
 ANGULAR  $\pm$  0.25 °

MATERIAL: PFA 440 HP  
 -----

FINISH: CLEAN  
 $R_a = 1.6$

	NAME	DATE
DRAWN	NJS/FEL	21/07/06
CHECKED	J'OD	--/--/--
APPROVED	IW	--/--/--

CALIFORNIA INSTITUTE OF TECHNOLOGY  
 MASSACHUSETTS INSTITUTE OF TECHNOLOGY  
 1GR, GLASGOW UNIVERSITY GEO 600 GROUP  
 RUTHERFORD APPLETON LABORATORIES

SYSTEM **ADVANCED LIGO**

SUB-SYSTEM **SUS**

NEXT ASSY **QUAD N-PTYPE LOWER STRUCTURE**

PART NAME **BUSH**  
**(ADJUSTABLE PAD ASSYS)**

SIZE	DRG. NO.	REV
<b>A</b>	<b>D060445</b>	<b>A.</b>