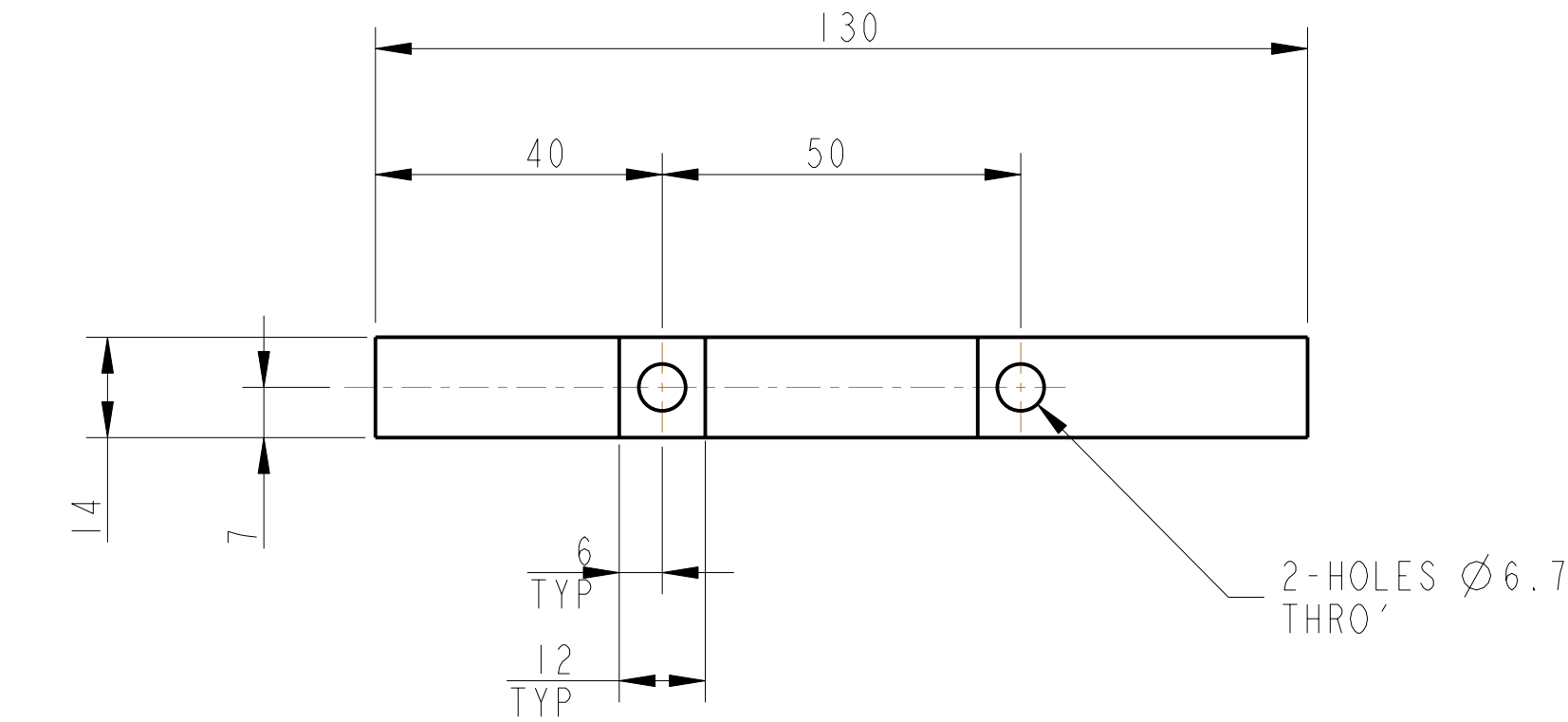
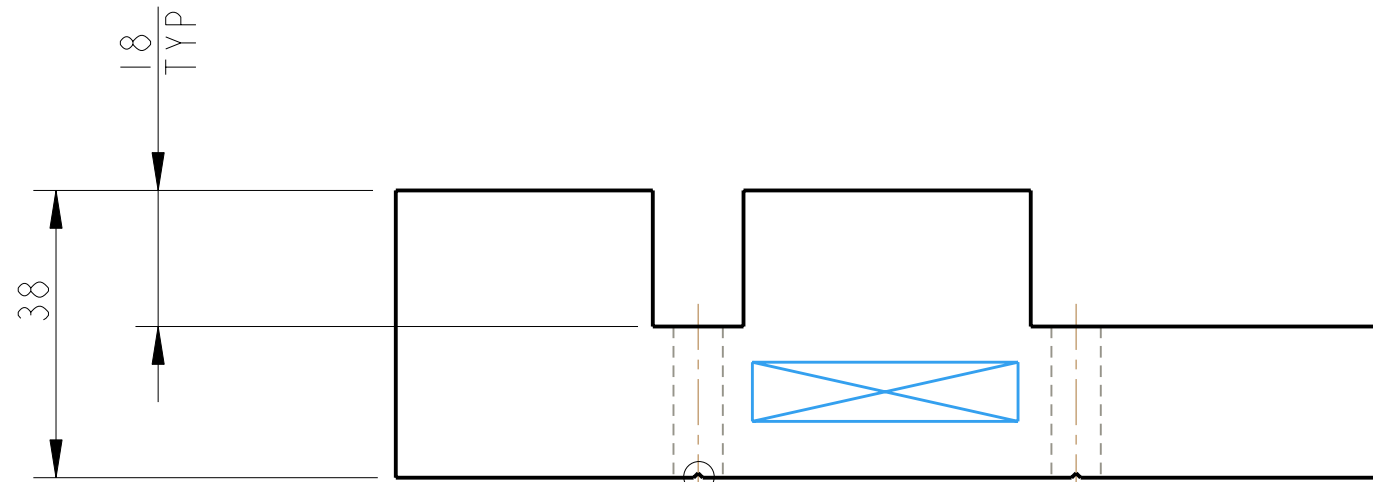
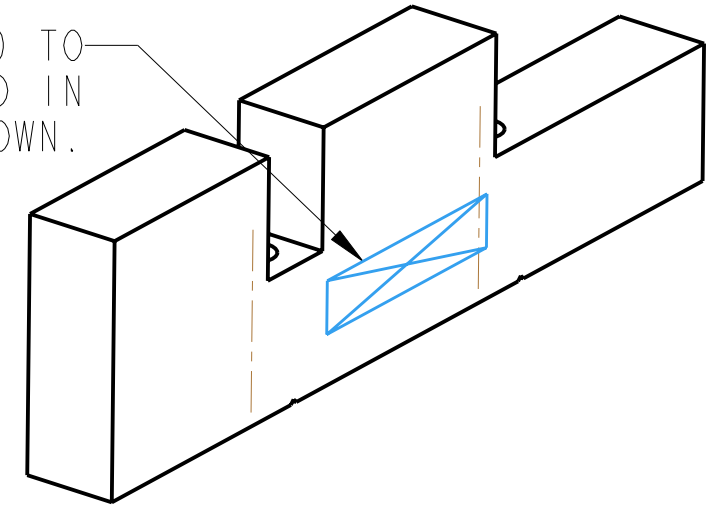


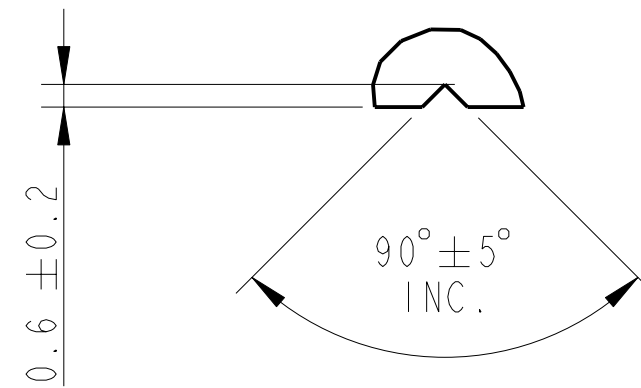
REV.	DATE	DCN #	DRAWING TREE #
A	19/OCT/06.	E060248	.
B	17/DEC/07	E060248-B	.
H	15/JULY/08	E080368	.



PART NO. (SEE NOTE 4) TO BE ETCHED OR STAMPED IN APPROX POSITION SHOWN.



DETAIL A  
VENT GROOVE DETAIL  
SCALE 5:1  
(2-POS)



NOTES: (UNLESS OTHERWISE SPECIFIED)		CALIFORNIA INSTITUTE OF TECHNOLOGY MASSACHUSETTS INSTITUTE OF TECHNOLOGY 1GR, GLASGOW UNIVERSITY GEO 600 GROUP RUTHERFORD APPLETON LABORATORIES	
1. REMOVE ALL SHARP EDGES, R.02 MIN.	DIMENSIONS ARE IN mm [INCHES] TOLERANCES: X.XX ± 0.2 mm ANGULAR ± 0.25 °	SYSTEM	aLIGO
2. DO NOT SCALE FROM DRAWING.		SUB-SYSTEM	SUS - QUAD
3. ALL MACHINING FLUIDS SHALL BE WATER SOLUBLE AND FREE OF SULFUR, CHLORINE AND SILICONE, SUCH AS CINCINNATI MILACRON'S CIMTECH 410 (STAINLESS STEEL)	MATERIAL: ST. STEEL 304	NEXT ASSY	TOP MASS QUAD
4. SCRIBE, ENGRAVE OR STAMP DRAWING PART NUMBER ON NOTED SURFACE OF PART AND A THREE DIGIT SERIAL NUMBER. SERIAL NUMBERS START AT 001 FOR THE FIRST PART AND PROCEED CONSECUTIVELY. USE .07" HIGH CHARACTERS. EXAMPLE: D020188- 001. A VIBRATORY TOOL MAY BE USED.	FINISH: CLEAN, GREASE FREE √μm [μin] Ra = 1.6	PART NAME	MASS AND SUPPORT MEMBER
		SIZE	B
		DRG. NO.	D060421
		PROJECTION:	1
		SHEET	1 OF 1