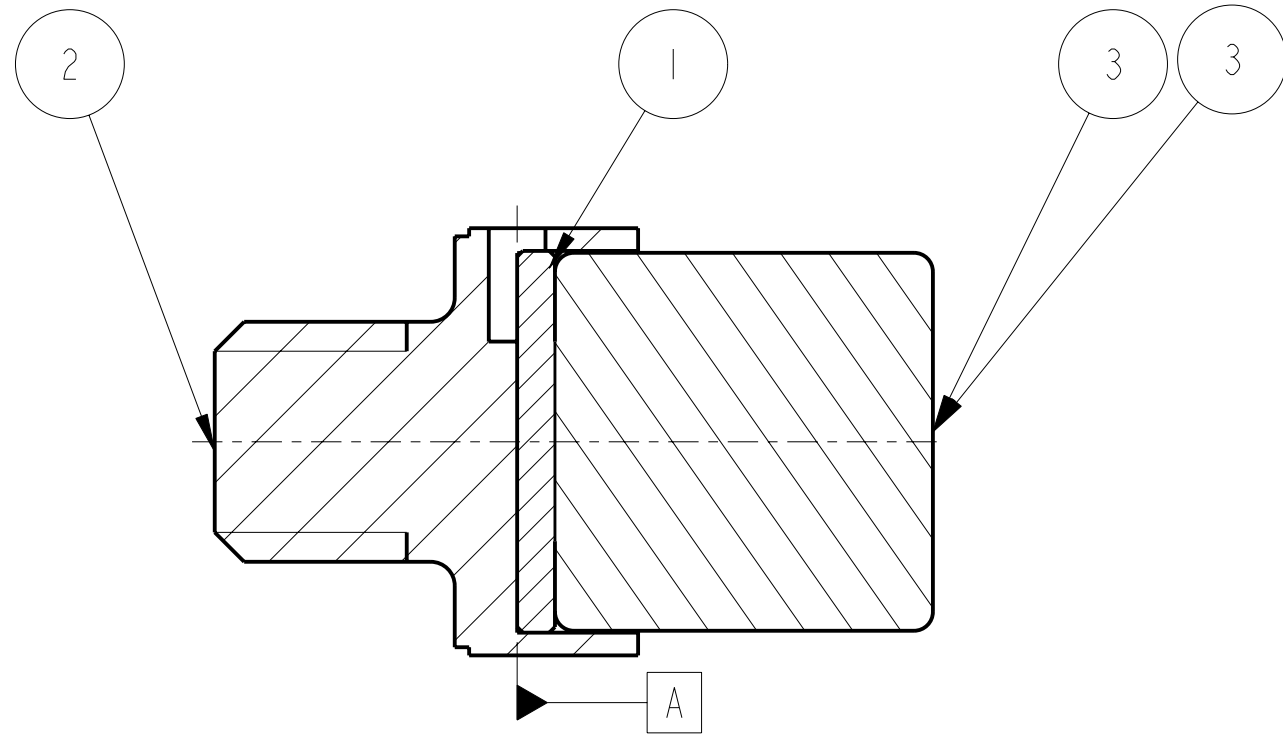
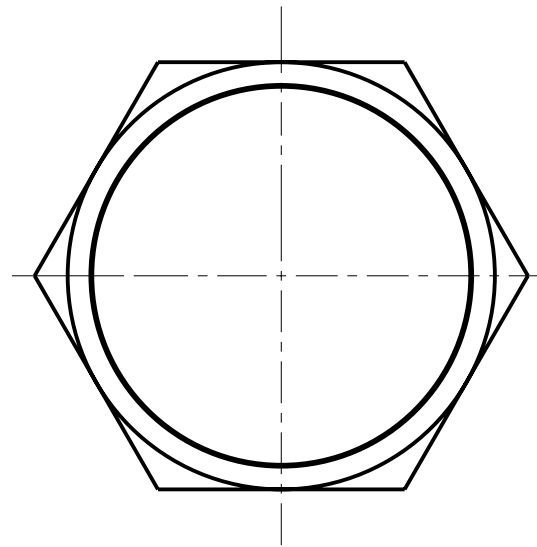


REV.	DATE	DCN #	DRAWING TREE #
A	19/OCT/06.	E060248	
H	15/JULY/08	E080368	




SECTION A-A



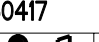
ITEM	QTY	SPARE	TOTAL	PART NUMBER	DESCRIPTION	MATERIALS
1	1			D060401	MAGNETIC PLUG; .	STAINLESS STEEL: 416
2	1			D060418	MAGNET RETAINER; (MODIFIED 1/4-20 HEX HEAD SCREW)	STAINLESS STEEL: 304/316
3	1			D0901344	10MM DIA X 10MM MAGNET; .	AS PAR SPEC: -----

ITEM	QTY	SPARE	TOTAL	PART NUMBER	DESCRIPTION	MATERIALS
PARTS LIST						

NOTES: (UNLESS OTHERWISE SPECIFIED)		
1. REMOVE ALL SHARP EDGES, R.02 MIN. 2. DO NOT SCALE FROM DRAWING. 3. ALL MACHINING FLUIDS SHALL BE WATER SOLUBLE AND FREE OF SULFUR, CHLORINE AND SILICONE, SUCH AS CINCINNATI MILACRON'S CIMTECH 410 (STAINLESS STEEL) 4. SCRIBE, ENGRAVE OR STAMP DRAWING PARTNUMBER ON NOTED SURFACE OF PART AND A THREE DIGIT SERIAL NUMBER. SERIAL NUMBERS START AT 001 FOR THE FIRST PART AND PROCEED CONSECUTIVELY. USE .07" HIGH CHARACTERS. EXAMPLE: D020188- 001. A VIBRATORY TOOL MAY BE USED.		
DIMENSIONS ARE IN mm [INCHES]		
TOLERANCES:		
X.XX ±0.2 mm		
ANGULAR ±0.25 °		
MATERIAL: AS BOM		
FINISH: AS DRW		
√μm [μin] Ra = -----		
NAME	DATE	
DRAWN I WILMUT	10/AUG/06	
CHECKED AJB	5MAY08	
APPROVED AJB	15/JULY/08	

 CALIFORNIA INSTITUTE OF TECHNOLOGY
 MASSACHUSETTS INSTITUTE OF TECHNOLOGY
 IGR, GLASGOW UNIVERSITY GEO 600 GROUP
 RUTHERFORD APPLETON LABORATORIES

SYSTEM **ADVANCED LIGO**
 SUB-SYSTEM **SUS**
 NEXT ASSY **TOP MASS QUAD N-PTYPE**
 PART NAME **OSEM MAGNET AND FLAG CONCEPT PART BUILT**

SIZE **B** DRG. NO. **D060417** REV **H.**
 SCALE 5:1 PROJECTION:  SHEET 1 OF 1