

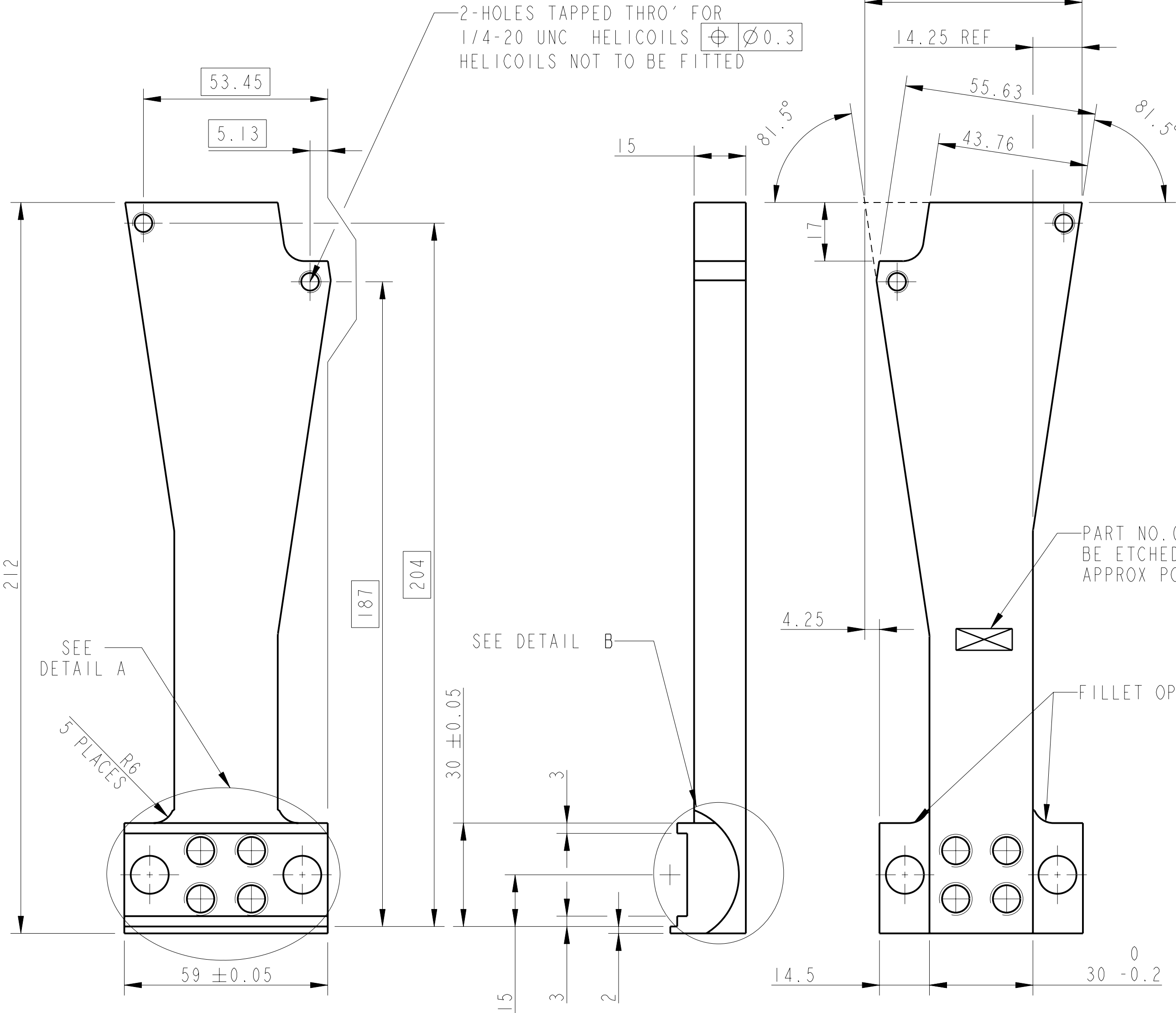
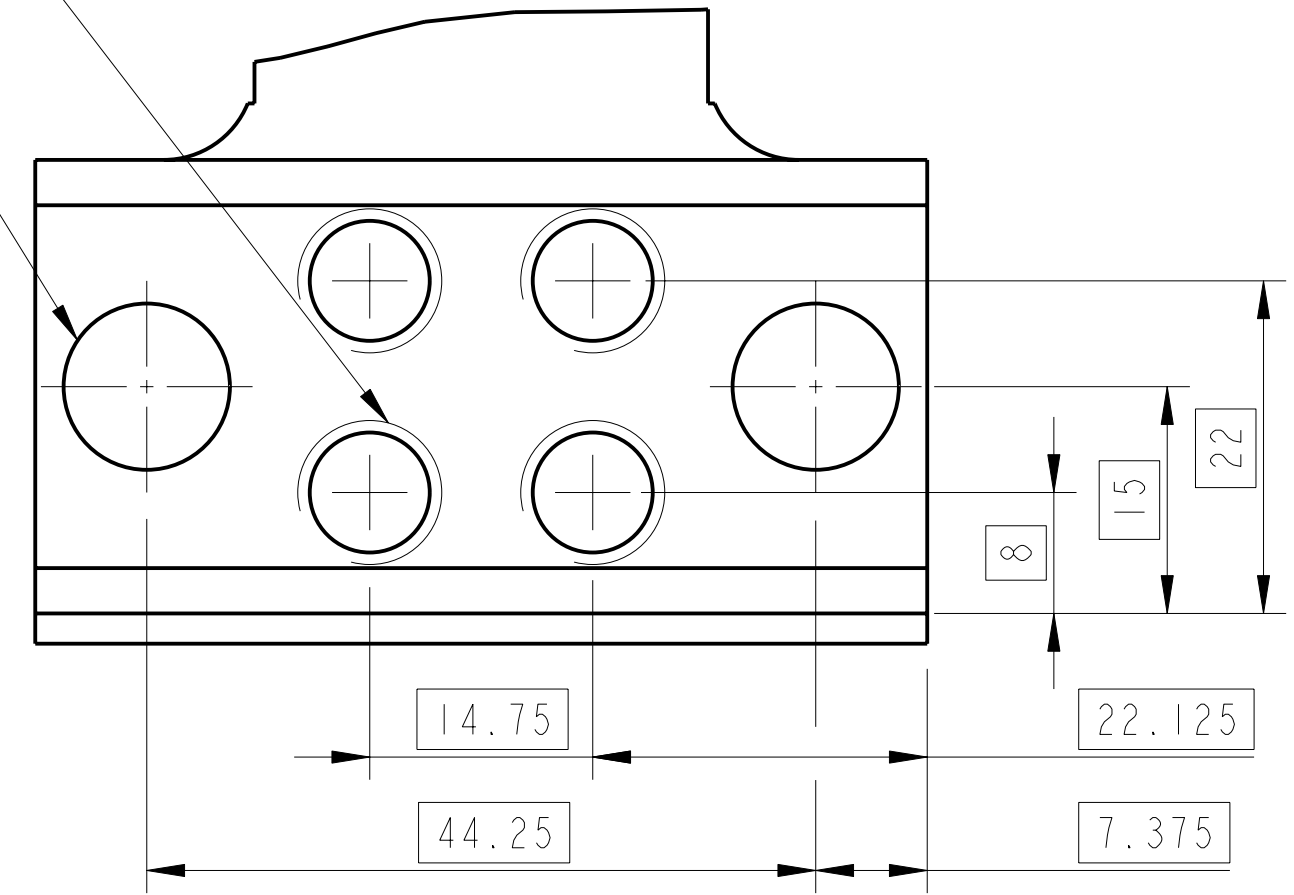
REV.	DATE	DCN #	DRAWING TREE #
A	19/OCT/06.	E060248	
B	17/DEC/07	E060248-B	
H	15/JULY/08	E080368	

4 HOLES TAPPED THRO' FOR
3/8-16 UNC HELICOILS $\varnothing 0.1$
HELICOILS NOT TO BE FITTED

DETAIL A
SCALE 2:1

DRILL 2 HOLES $\varnothing 11$
THRO $\varnothing 0.2$

2-HOLES TAPPED THRO' FOR
1/4-20 UNC HELICOILS $\varnothing 0.3$
HELICOILS NOT TO BE FITTED

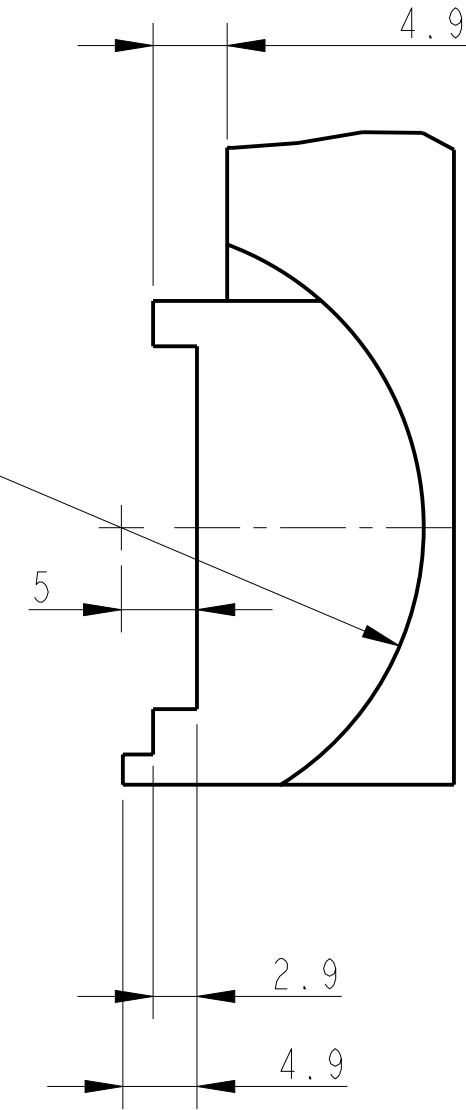


PART NO. (SEE NOTE 4) TO
BE ETCHED OR STAMPED IN
APPROX POSITION SHOWN.

FILLET OPTIONAL

R20 $\begin{matrix} +0.25 \\ 0 \end{matrix}$

DETAIL B
SCALE 2:1



NOTES: (UNLESS OTHERWISE SPECIFIED)

- REMOVE ALL SHARP EDGES, R. 0.2 MIN.
- DO NOT SCALE FROM DRAWING.
- ALL MACHINING FLUIDS SHALL BE WATER SOLUBLE AND FREE OF SULFUR, CHLORINE AND SILICONE, SUCH AS CINCINNATI MILACRON'S CIMTECH 410 (STAINLESS STEEL).
- SCRIBE, ENGRAVE OR STAMP DRAWING PART NUMBER ON NOTED SURFACE OF PART AND A THREE DIGIT SERIAL NUMBER. SERIAL NUMBERS START AT 001 FOR THE FIRST PART AND PROCEED CONSECUTIVELY. USE .07" HIGH CHARACTERS. EXAMPLE: D020188-001. A VIBRATORY TOOL MAY BE USED.

DIMENSIONS ARE IN MM TOLERANCES:		± 0.2 mm
MATERIAL:		ST STEEL 304/316
FINISH:		CLEAN, GREASE FREE
Ra (µm)		1.6
NAME	DATE	
DRAWN J. O'DELL	01/DEC/05	
CHECKED AJB	SMAY08	
APPROVED AJB	15/JULY/08	

CALIFORNIA INSTITUTE OF TECHNOLOGY GLASGOW UNIVERSITY GEO 600 GROUP RUTHERFORD APPLETON LABORATORIES	
SYSTEM	ADVANCED LIGO
SUB-SYSTEM	SUS
NEXT ASSY	TOP MASS QUAD N/P TYPE
PART NAME	BLADE TIP Z POSITION ADJ (BTM HALF)
DRG. NO.	D060415
SCALE	1:1
PROJECTION	1 OF 1