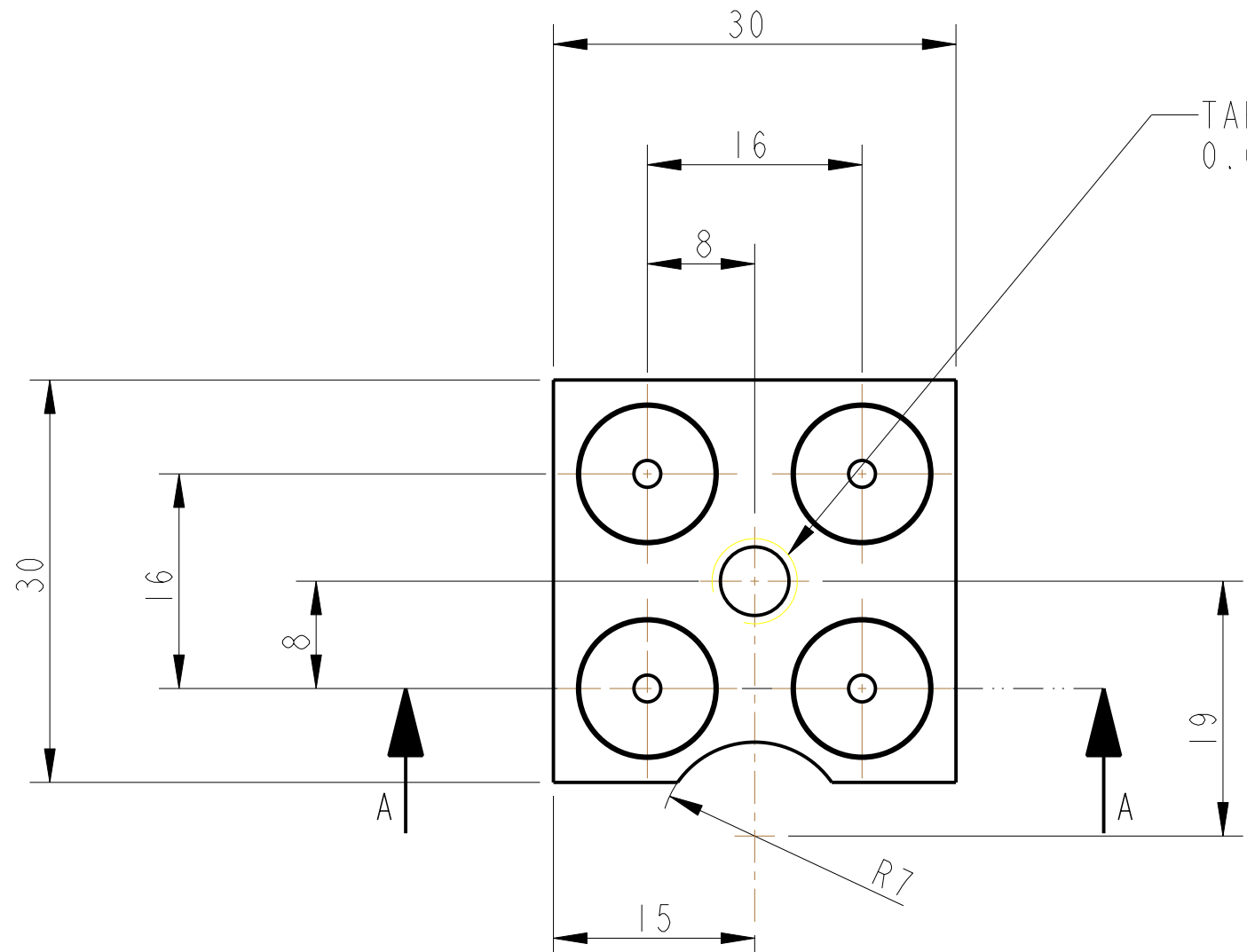
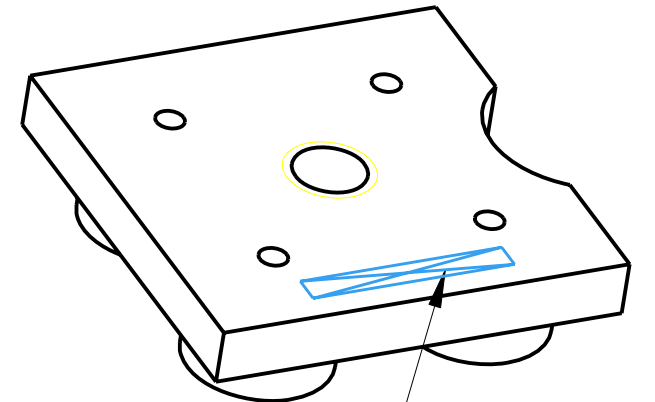


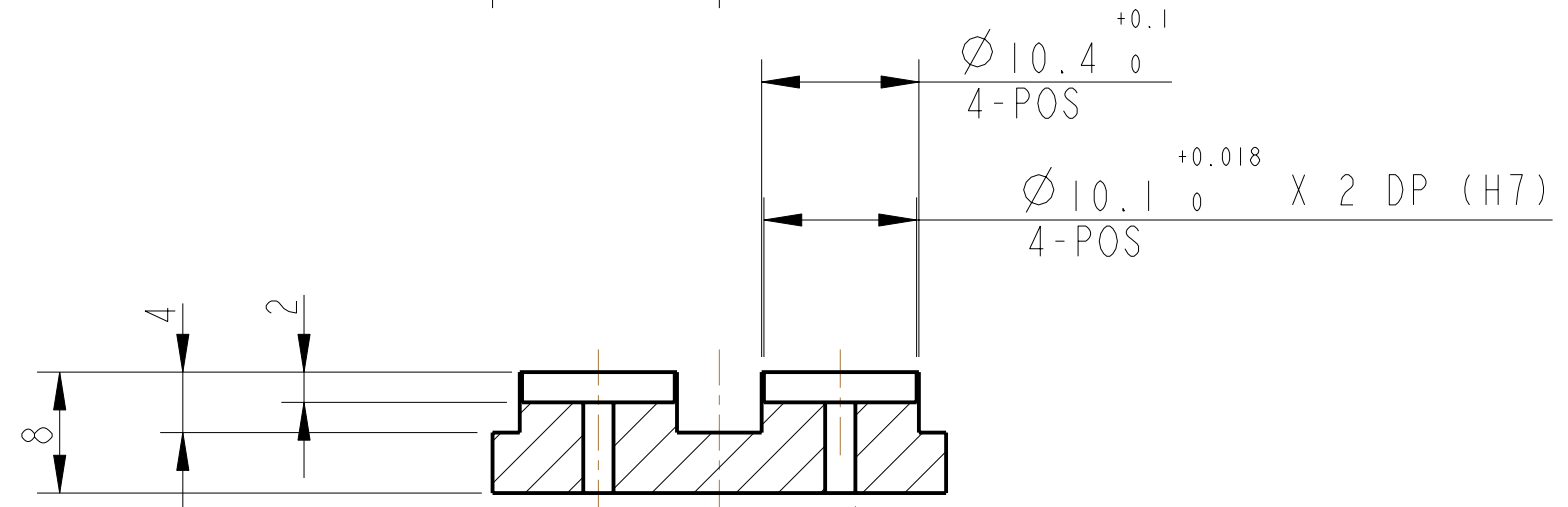
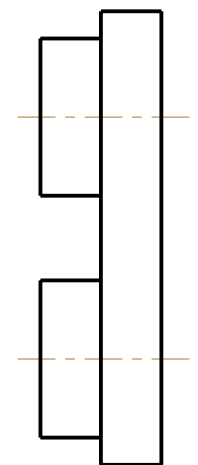
REV.	DATE	DCN #	DRAWING TREE #
A	9/OCT/06	E060248	
B	17/DEC/07	E060248-B	



TAP 1-HOLE THRU' 1/4-20 UNC  
0.005" OVERSIZE



PART NO. (SEE NOTE 4) TO  
BE ETCHED OR STAMPED IN  
APPROX POSITION SHOWN.



SECTION A-A

NOTES: (UNLESS OTHERWISE SPECIFIED)		CALIFORNIA INSTITUTE OF TECHNOLOGY MASSACHUSETTS INSTITUTE OF TECHNOLOGY IGR, GLASGOW UNIVERSITY GEO 600 GROUP RUTHERFORD APPLETON LABORATORIES	
1. REMOVE ALL SHARP EDGES, R.02 MIN. 2. DO NOT SCALE FROM DRAWING. 3. ALL MACHINING FLUIDS SHALL BE WATER SOLUBLE AND FREE OF SULFUR, CHLORINE AND SILICONE, SUCH AS CINCINNATI MILACRON'S CIMTECH 410 (STAINLESS STEEL) 4. SCRIBE, ENGRAVE OR STAMP DRAWING PART NUMBER ON NOTED SURFACE OF PART AND A THREE DIGIT SERIAL NUMBER. SERIAL NUMBERS START AT 001 FOR THE FIRST PART AND PROCEED CONSECUTIVELY. USE .07" HIGH CHARACTERS. EXAMPLE: D020188- 001. A VIBRATORY TOOL MAY BE USED.	DIMENSIONS ARE IN mm [INCHES] TOLERANCES: X.XX ±0.2 mm ANGULAR ±0.25 °		SYSTEM <b>aLIGO</b>
	MATERIAL: AL ALLOY 6061 OR 5083		SUB-SYSTEM <b>SUS</b>
	FINISH: CLEAN, GREASE FREE √μm [μin] Ra = 1.6		NEXT ASSY <b>TOP MASS QUAD</b>
	DRAWN NJS/FEL 15/09/06 CHECKED MB 15/MAR/10 APPROVED JOD 15/MAR/10		PART NAME <b>ECD MAGNET MOUNT PLATE OSEM MAGNET ASSEMBLY</b>
SCALE 2:1 PROJECTION:		SIZE <b>B</b> DRG. NO. <b>D060408</b>	REV <b>H.</b>
SHEET 1 OF 1			