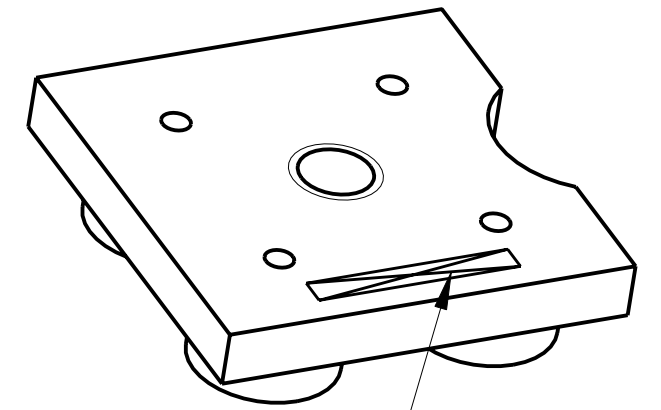
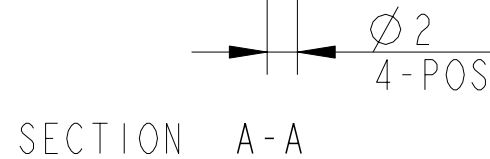
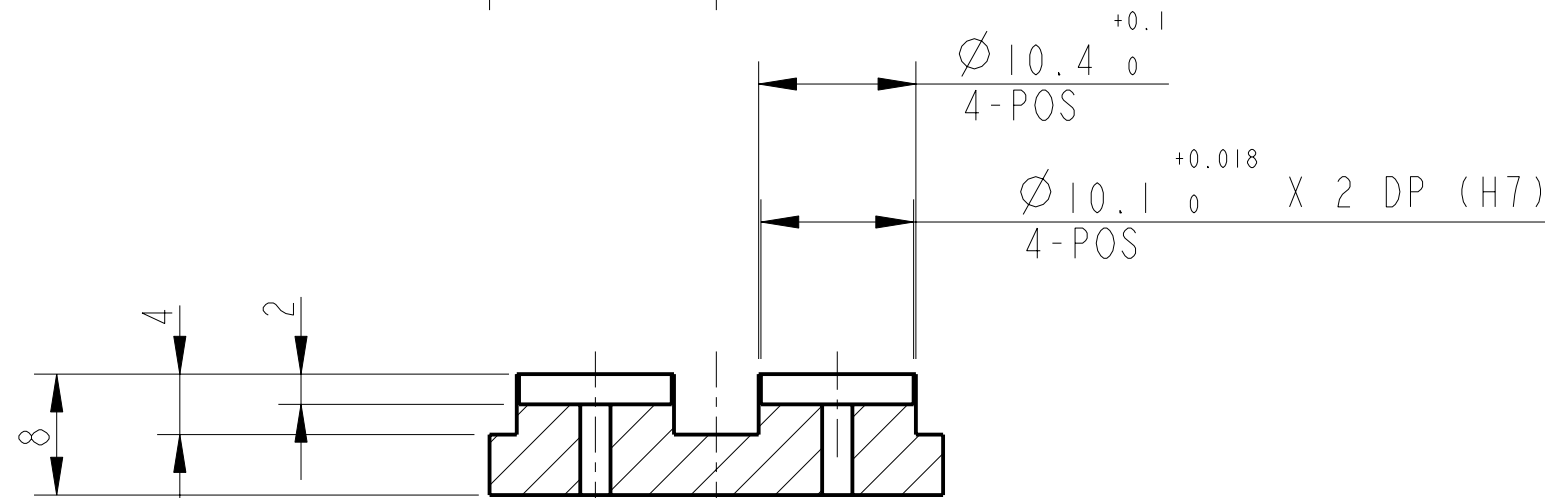
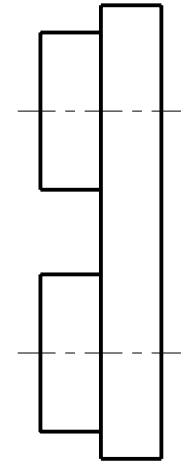


1-HOLE THRU' FOR 1/4-20 UNC HELICOIL.
HELICOIL NOT TO BE FITTED.



PART NO. (SEE NOTE 4) TO
BE ETCHED OR STAMPED IN
APPROX POSITION SHOWN.



NOTES: (UNLESS OTHERWISE SPECIFIED)		CALIFORNIA INSTITUTE OF TECHNOLOGY MASSACHUSETTS INSTITUTE OF TECHNOLOGY IGR, GLASGOW UNIVERSITY GEO 600 GROUP RUTHERFORD APPLETON LABORATORIES								
1. REMOVE ALL SHARP EDGES, R.02 MIN. 2. DO NOT SCALE FROM DRAWING. 3. ALL MACHINING FLUIDS SHALL BE WATER SOLUBLE AND FREE OF SULFUR, CHLORINE AND SILICONE, SUCH AS CINCINNATI MILACRON'S CIMTECH 410 (STAINLESS STEEL) 4. SCRIBE, ENGRAVE OR STAMP DRAWING PARTNUMBER ON NOTED SURFACE OF PART AND A THREE DIGIT SERIAL NUMBER. SERIAL NUMBERS START AT 001 FOR THE FIRST PART AND PROCEED CONSECUTIVELY. USE .07" HIGH CHARACTERS. EXAMPLE: D020188- 001. A VIBRATORY TOOL MAY BE USED.	DIMENSIONS ARE IN mm [INCHES] TOLERANCES: X.XX ±0.2 mm ANGULAR ±0.25 °		SYSTEM ADVANCED LIGO							
	MATERIAL: AL ALLOY 6061 OR 5083		SUB-SYSTEM SUS							
	FINISH: CLEAN, GREASE FREE √μm [μin] Ra = 1.6		NEXT ASSY TOP MASS QUAD N-PTYPE							
	<table border="1"> <tr> <th>NAME</th> <th>DATE</th> </tr> <tr> <td>DRAWN NJS/FEL</td> <td>15/09/06</td> </tr> <tr> <td>CHECKED IW</td> <td>07/DEC/05</td> </tr> <tr> <td>APPROVED IW</td> <td>08/DEC/05</td> </tr> </table>		NAME	DATE	DRAWN NJS/FEL	15/09/06	CHECKED IW	07/DEC/05	APPROVED IW	08/DEC/05
NAME	DATE									
DRAWN NJS/FEL	15/09/06									
CHECKED IW	07/DEC/05									
APPROVED IW	08/DEC/05									
<table border="1"> <tr> <td>SIZE B</td> <td>DRG. NO. D060408</td> <td>REV F.</td> </tr> </table>		SIZE B	DRG. NO. D060408	REV F.	SCALE 2:1 PROJECTION: SHEET 1 OF 1					
SIZE B	DRG. NO. D060408	REV F.								