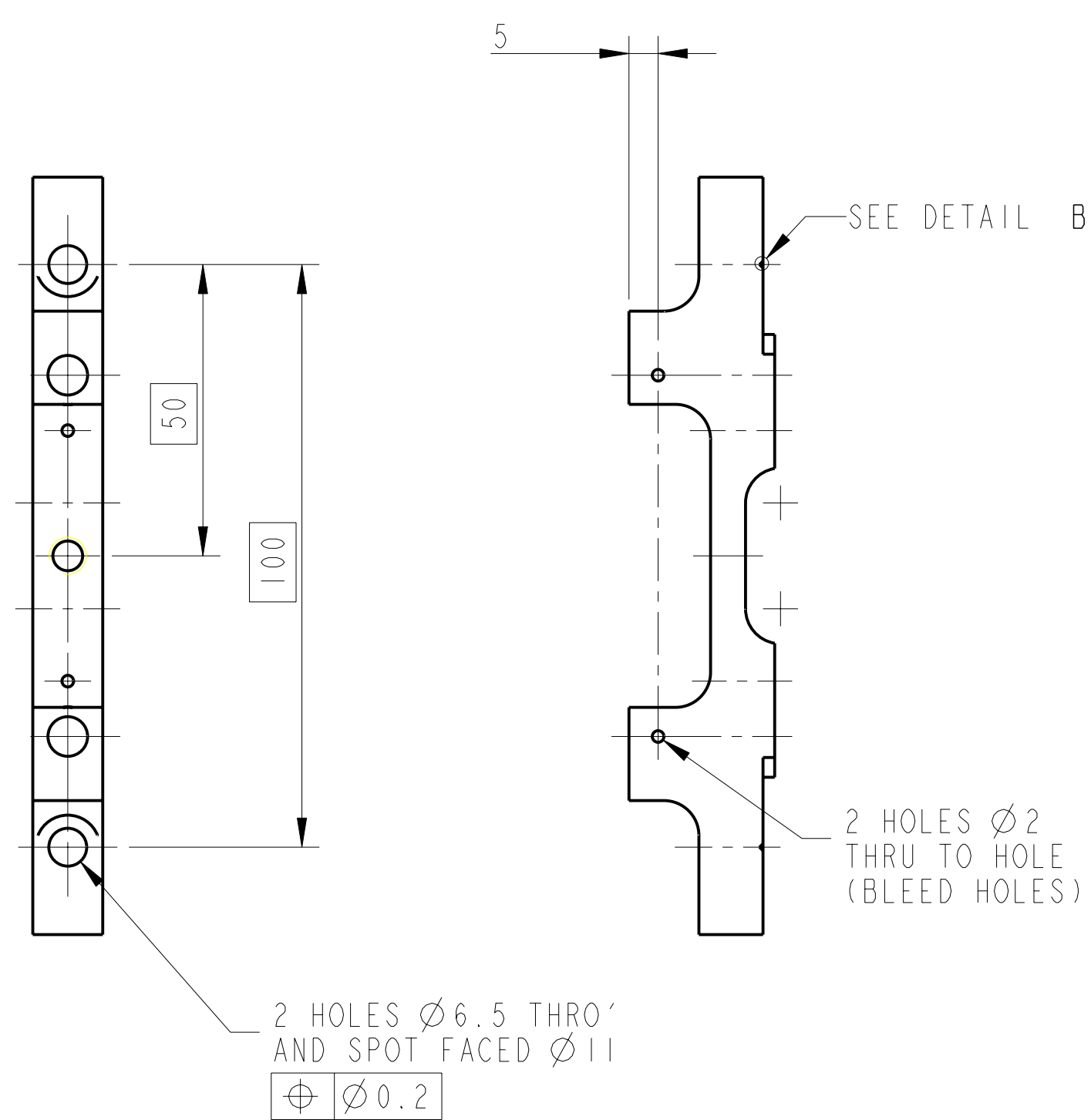
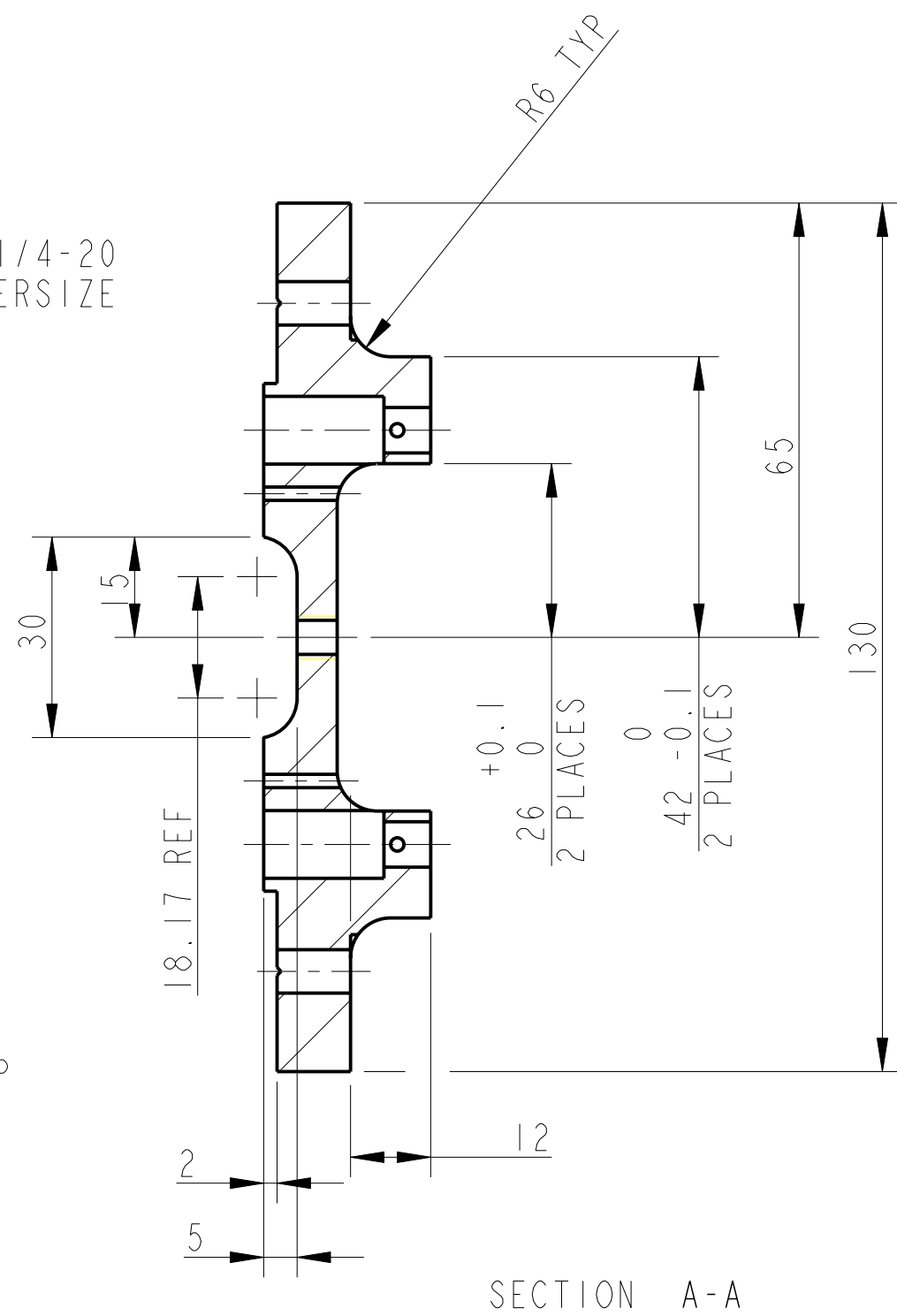
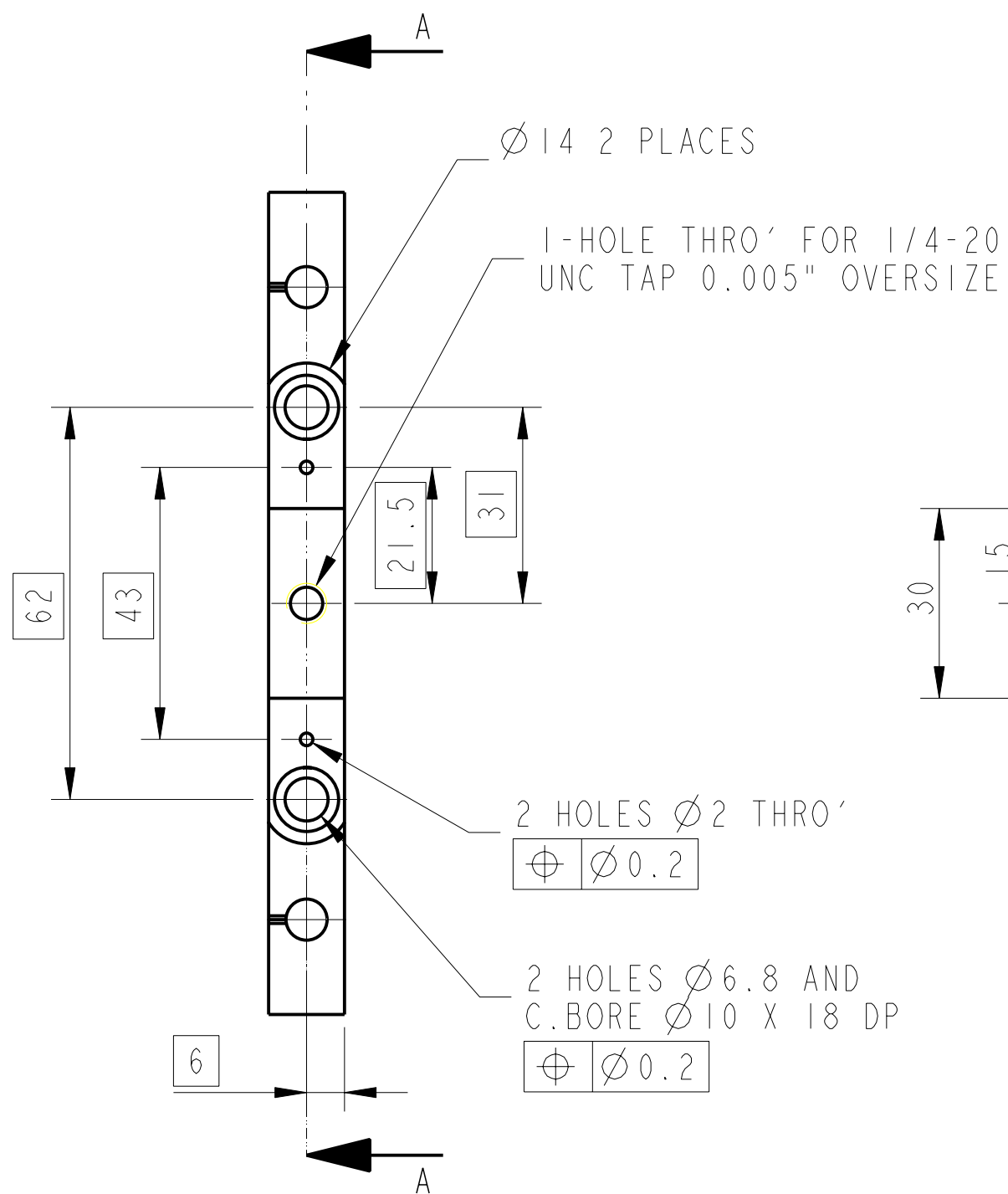
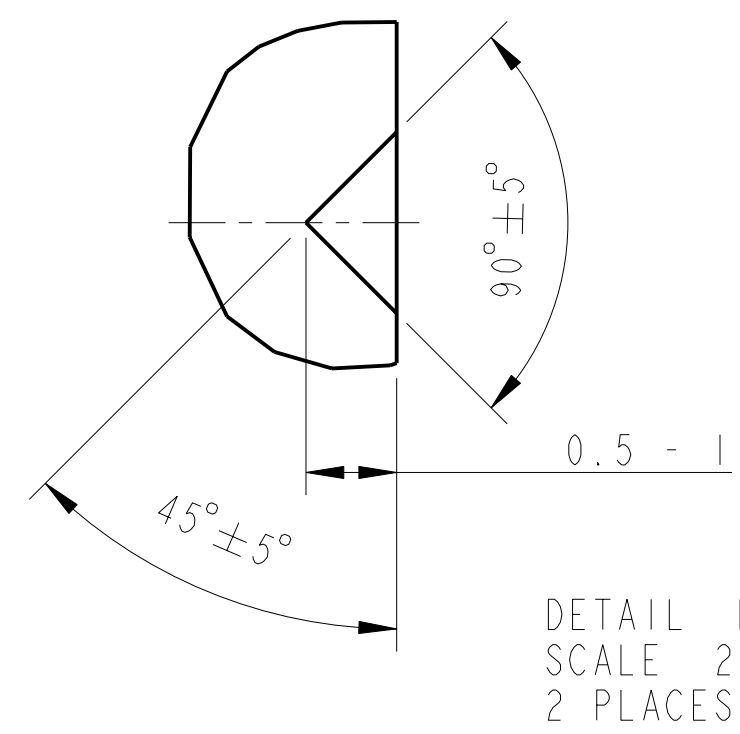
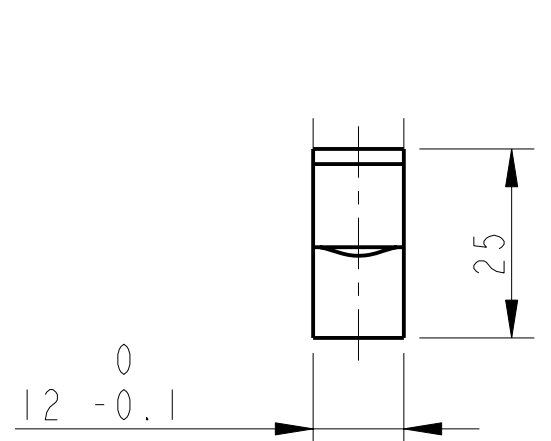
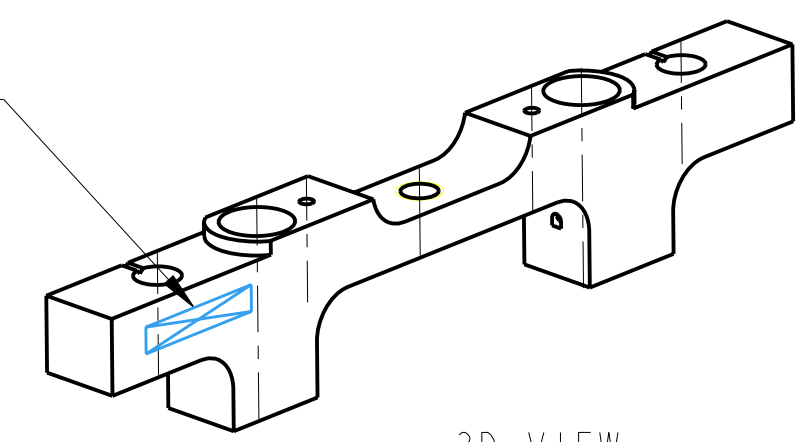


REV.	DATE	DCN #	DRAWING TREE #
A	9/OCT/06	E060248	
B	17/DEC/07	E060248-B	



PART NO. (SEE NOTE 4) TO BE ETCHED OR STAMPED IN APPROX POSITION SHOWN.



DETAIL B  
SCALE 20:1  
2 PLACES

NOTES: (UNLESS OTHERWISE SPECIFIED)		DIMENSIONS ARE IN mm (INCHES)		CALIFORNIA INSTITUTE OF TECHNOLOGY	
1. REMOVE ALL SHARP EDGES, R.02 MIN.	2. DO NOT SCALE FROM DRAWING.	3. ALL MACHINING FLUIDS SHALL BE WATER SOLUBLE AND FREE OF SULFUR, CHLORINE AND SILICONE, SUCH AS CINCINNATI MILACRON'S CIMTECH 410 (STAINLESS STEEL)	4. SCRIBE, ENGRAVE OR STAMP DRAWING PART NUMBER ON NOTED SURFACE OF PART AND A THREE DIGIT SERIAL NUMBER. SERIAL NUMBERS START AT 001 FOR THE FIRST PART AND PROCEED CONSECUTIVELY. USE .07" HIGH CHARACTERS. EXAMPLE: D020188-001. A VIBRATORY TOOL MAY BE USED.	X.XX $\pm 0.2$ mm ANGULAR $\pm 0.25^\circ$	MASSACHUSETTS INSTITUTE OF TECHNOLOGY 100 MASSACHUSETTS AVENUE CAMBRIDGE, MASSACHUSETTS 02139-0001 RUTHERFORD APPLETON LABORATORIES
MATERIAL: AL ALLOY 5083				SYSTEM <b>aLIGO</b>	
FINISH: CLEAN, GREASE FREE $\sqrt{\mu m}$ (min) Ra = 1.6				SUB-SYSTEM <b>SUS</b>	
DRAWN: J O'DELL 27/OCT/05				NEXT ASSY <b>TOP MASS QUAD</b>	
CHECKED: MB 15/MAR/10				PART NAME <b>OSEM &amp; ECD UNIT BACKBONE</b>	
APPROVED: JOD 15/MAR/10				DRG. NO. <b>D060407</b>	
SCALE 1:1 PROJECTION				SHEET 1 OF 1	