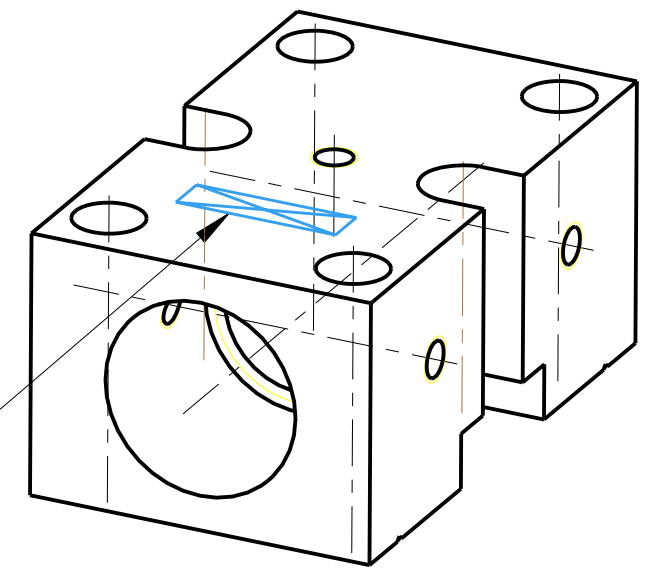
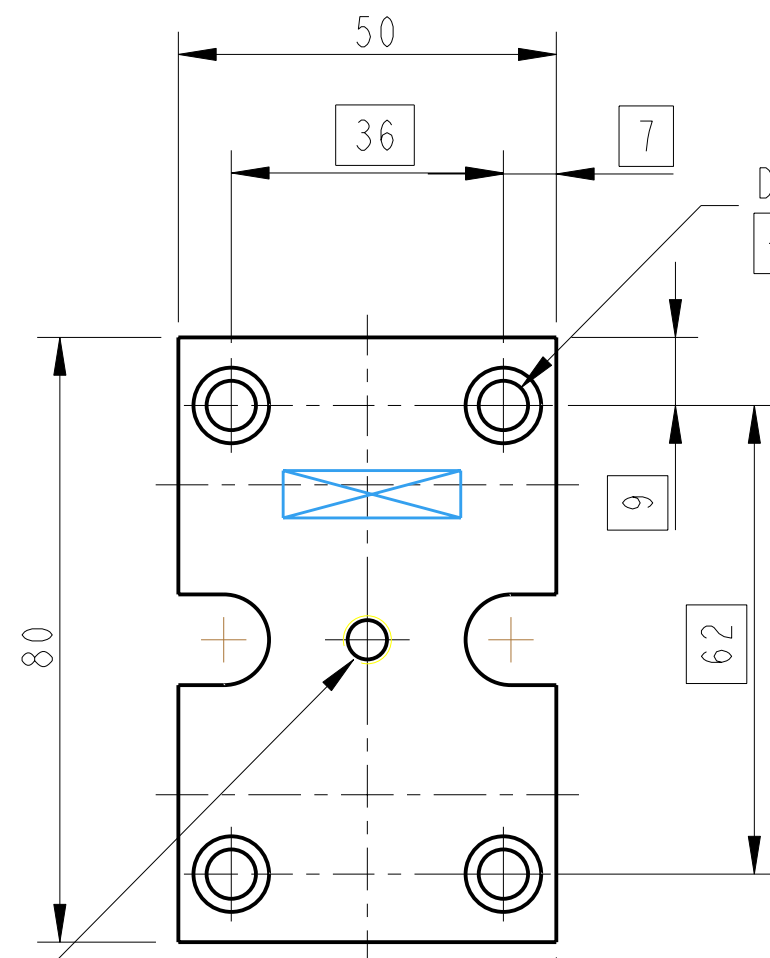
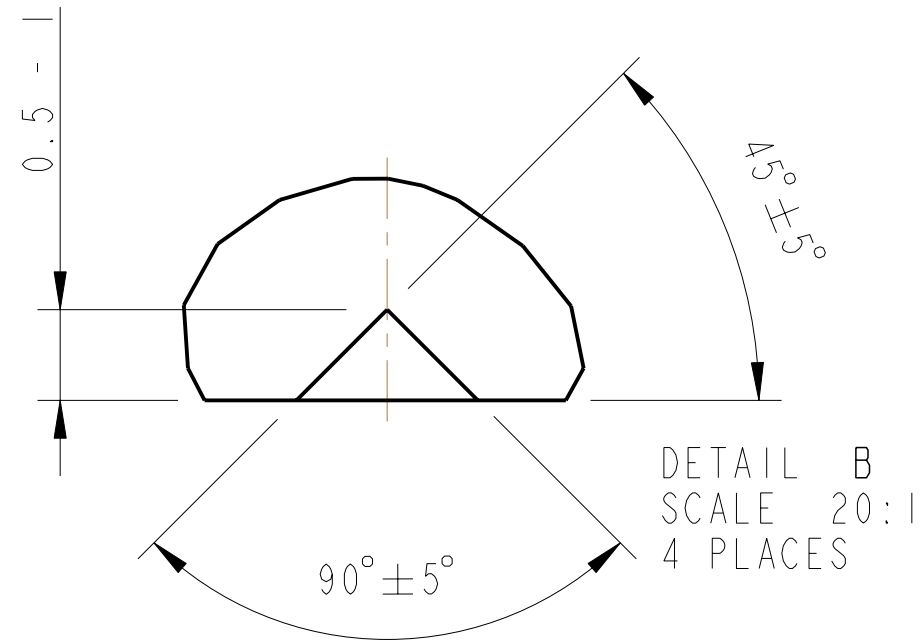
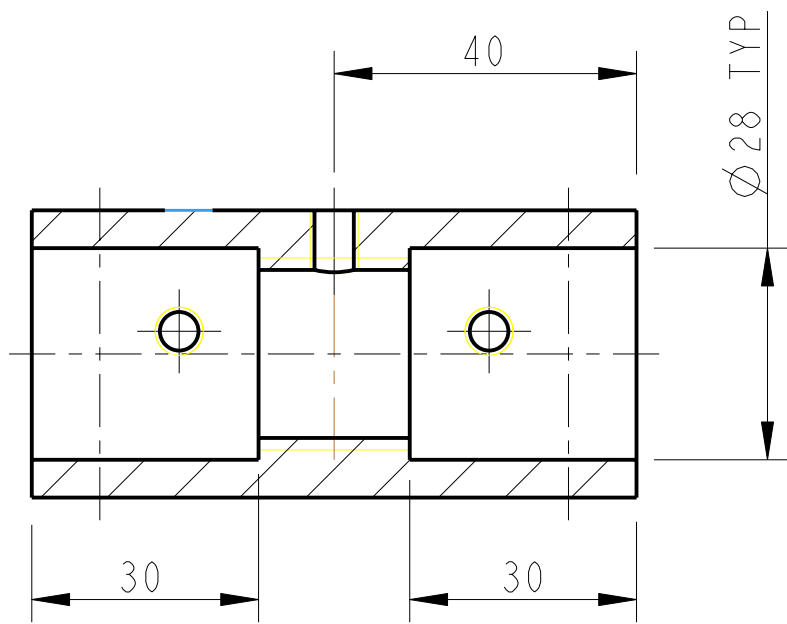


REV.	DATE	DCN #	DRAWING TREE #
A	18/OCT/06	E060247	
B	19/DEC/07	E060247-B	

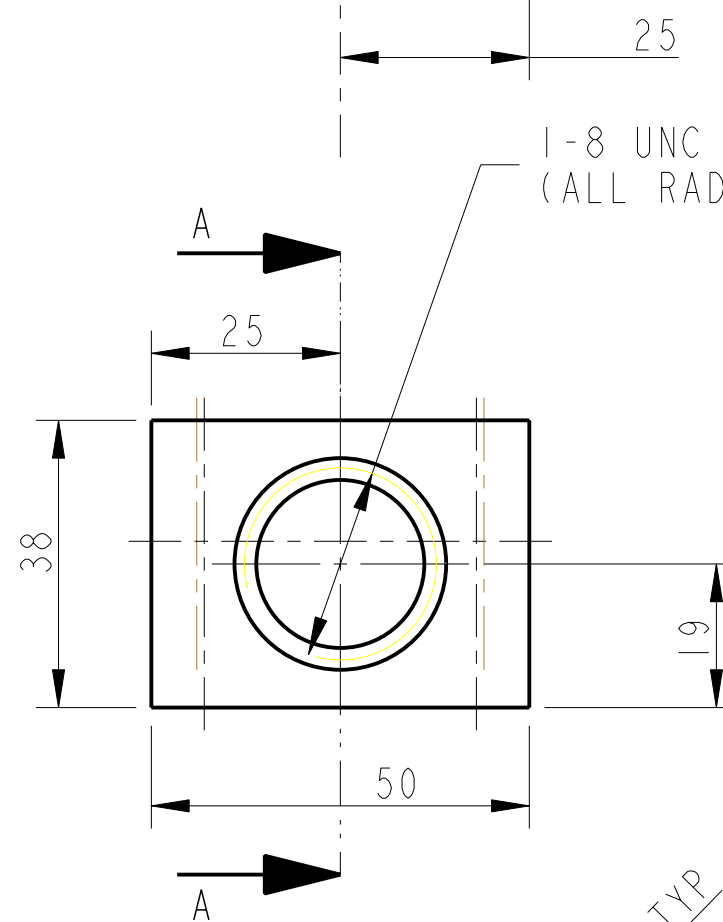


3D VIEW

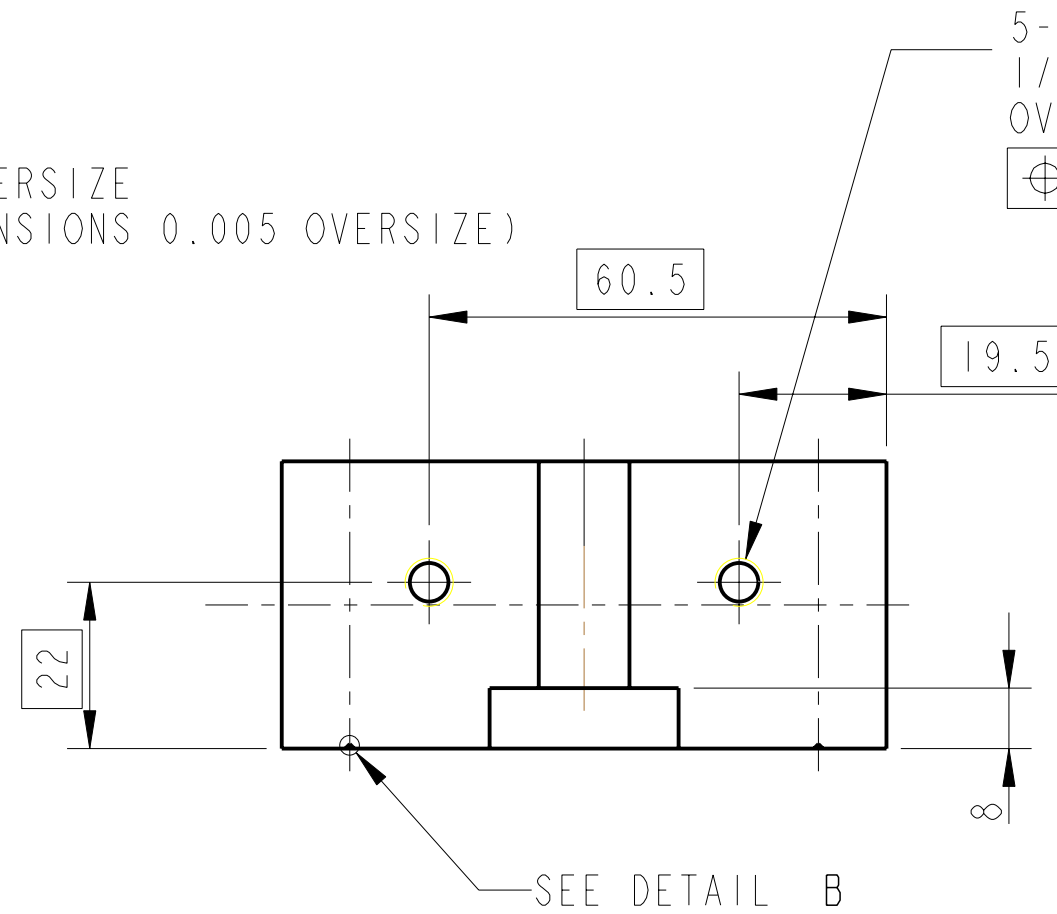
1-HOLE THRO' TO HOLE,
FOR 1/4-20 UNC X
I.D 1g HELICOILS
HELICOILS NOT TO BE FITTED



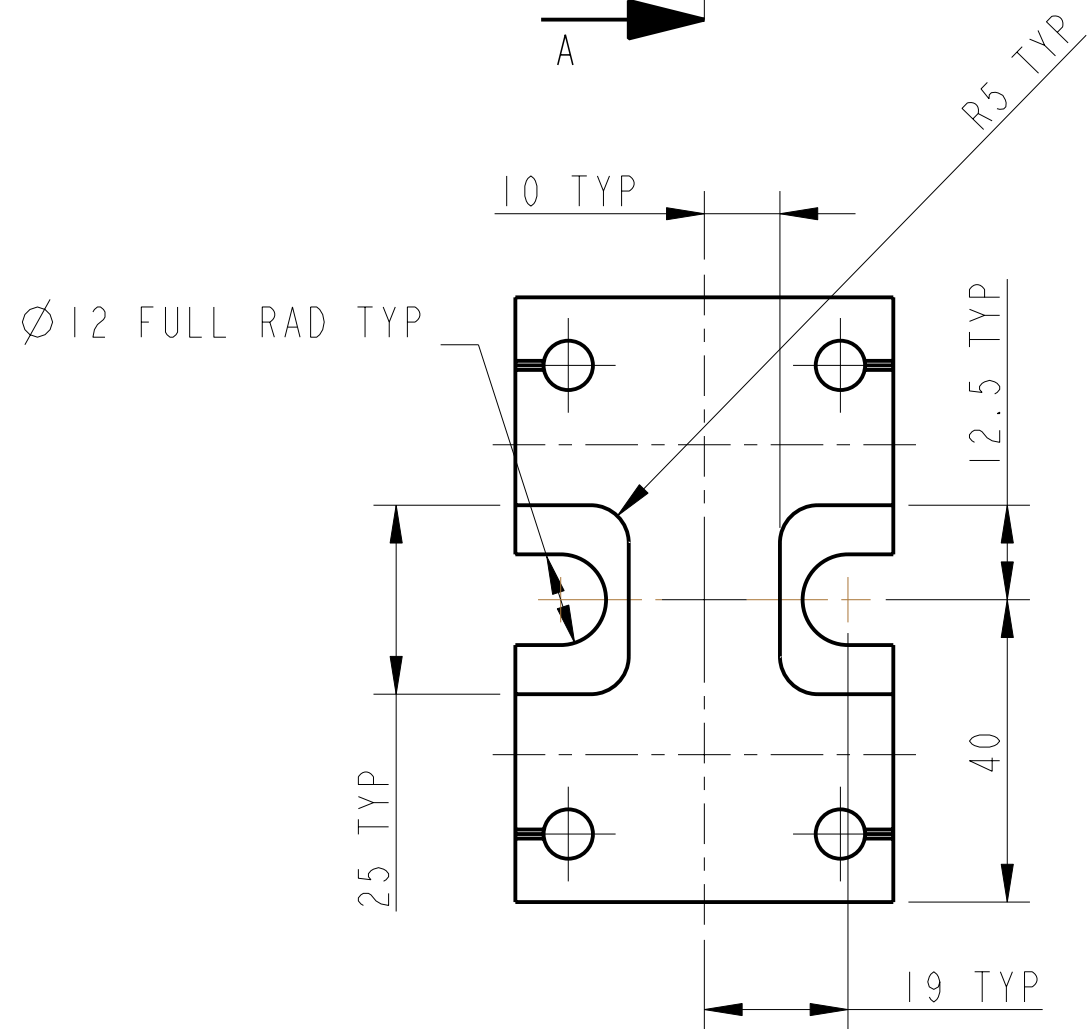
SECTION A-A



1-8 UNC 0.005 OVERSIZE
(ALL RADIAL DIMENSIONS 0.005 OVERSIZE)



5-HOLES THRO' TO HOLE,
1/4-20 UNC TAP 0.005"
OVERSIZE



NOTES: (UNLESS OTHERWISE SPECIFIED)				DIMENSIONS ARE IN mm (INCHES)		TOLERANCES:	
1.	REMOVE ALL SHARP EDGES, R.02 MIN.			X.XX ±0.2 mm (INCHES)			
2.	DO NOT SCALE FROM DRAWING.			ANGULAR ±0.25°			
3.	ALL MACHINING FLUIDS SHALL BE WATER SOLUBLE AND FREE OF SULFUR, CHLORINE AND SILICONE, SUCH AS CINCINNATI MILACRON'S CIMTECH 410 (STAINLESS STEEL)						
4.	SCRIBE, ENGRAVE OR STAMP DRAWING PART NUMBER ON NOTED SURFACE OF PART AND A THREE DIGIT SERIAL NUMBER. SERIAL NUMBERS START AT 001 FOR THE FIRST PART AND PROCEED CONSECUTIVELY. USE .07" HIGH CHARACTERS. EXAMPLE: D020188-001. A VIBRATORY TOOL MAY BE USED.						
				MATERIAL:	AL ALLOY 5083		
				FINISH:	CLEAN, GREASE FREE		
				µm (µin)	Ro = 1.6		
DRAWN		J O'DELL	27/OCT/05	NAME		DATE	
CHECKED		MB	15/MAR/10	DRG. NO.			
APPROVED		JOD	15/MAR/10	SCALE		1:1	PROJECTION
				CALIFORNIA INSTITUTE OF TECHNOLOGY		GLASGOW UNIVERSITY GEO 600 GROUP	
				RUTHERFORD APPLETON LABORATORIES			
				SYSTEM		aLIGO	
				SUB-SYSTEM		SUS	
				NEXT ASSY		TOP MASS QUAD	
				PART NAME		PITCH ADJUSTER & MASS	
				DRG. NO.		D060398	
				SCALE		1:1	
				PROJECTION		FIRST ANGLE	
				SHEET		1 OF 1	