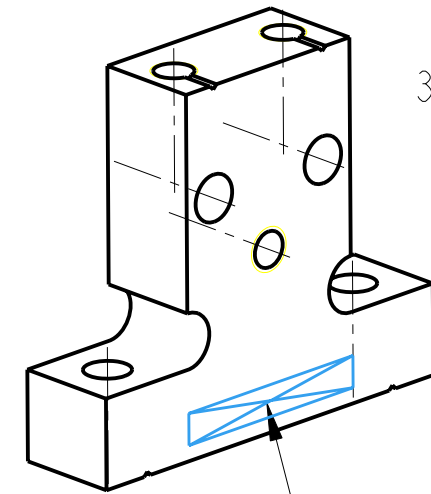
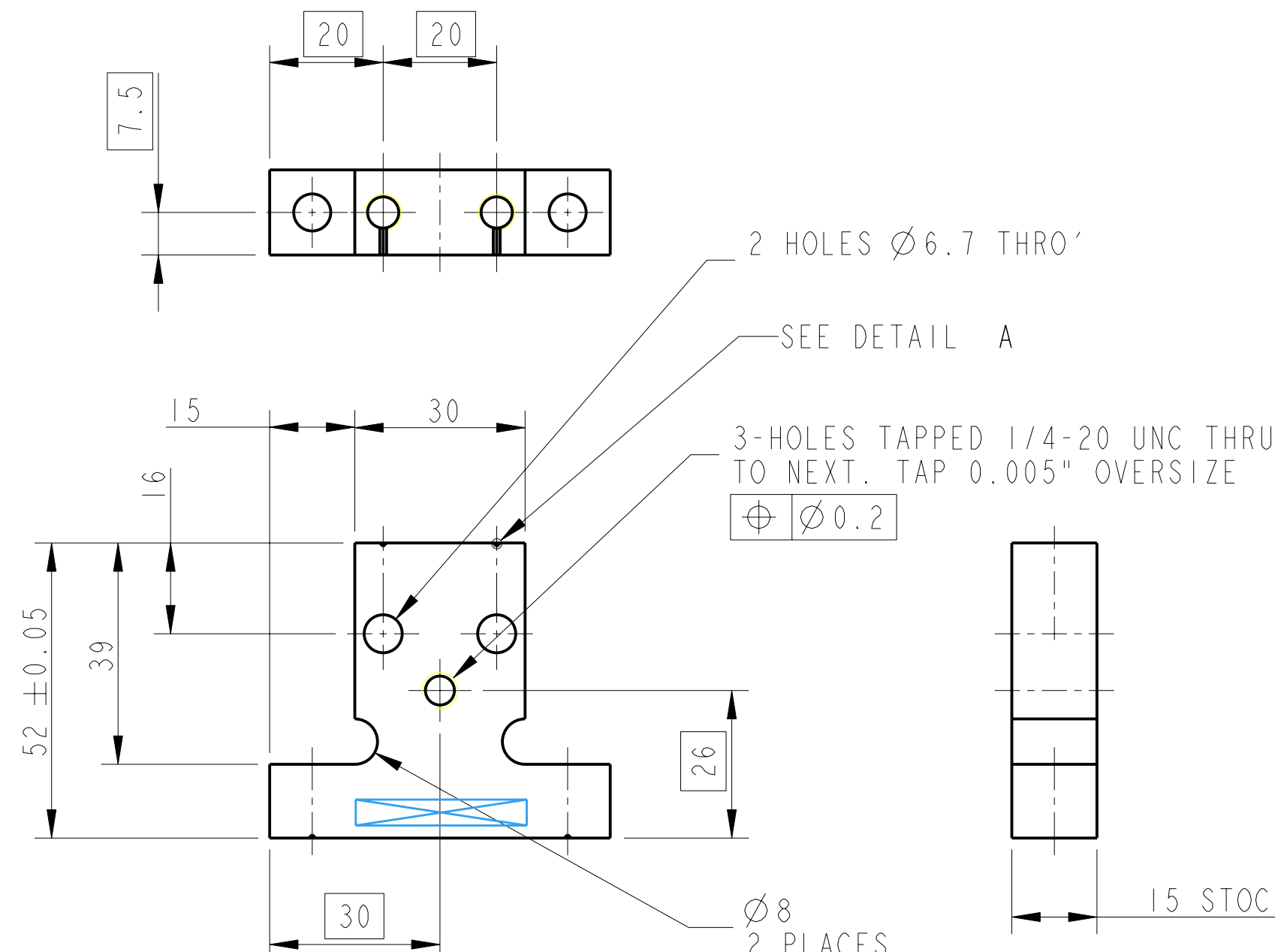
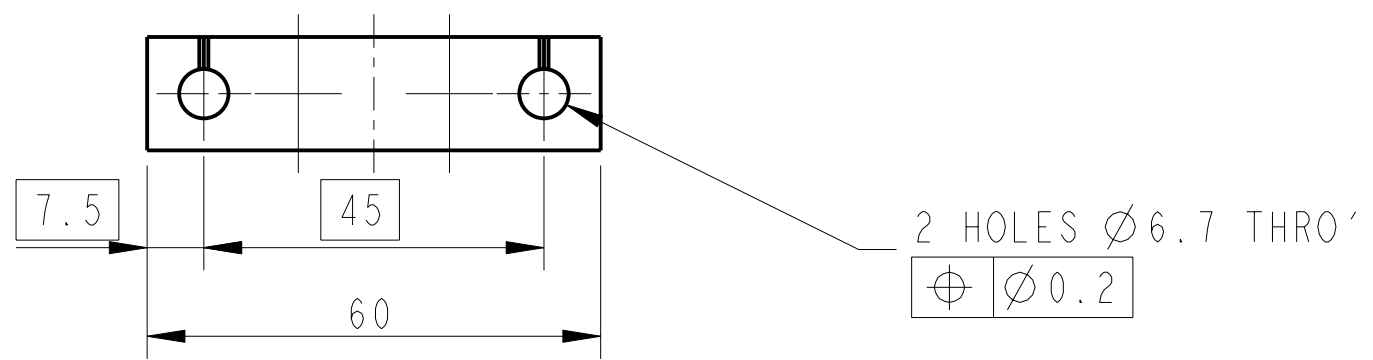
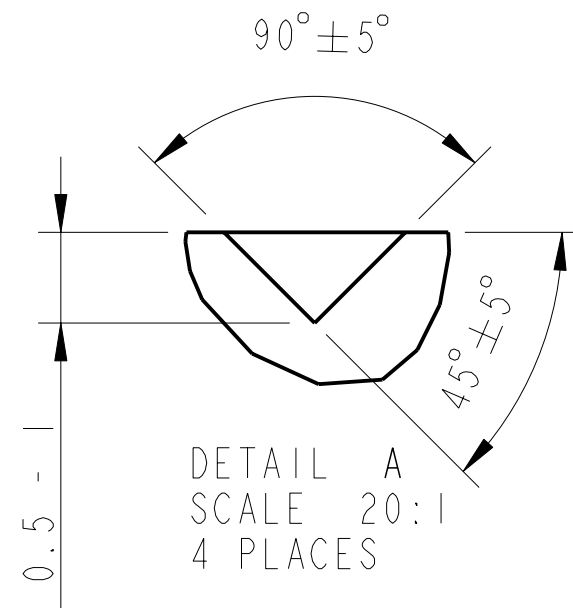


REV.	DATE	DCN #	DRAWING TREE #
A	18/OCT/06	E060247	
B	19/DEC/07	E060247-B	
H	21/JULY/08	E080371	



PART NO. (SEE NOTE 4) TO BE ETCHED OR STAMPED IN APPROX POSITION SHOWN.



NOTES: (UNLESS OTHERWISE SPECIFIED)		DIMENSIONS ARE IN mm [INCHES]		TOLERANCES:	
1. REMOVE ALL SHARP EDGES, R.02 MIN.		X.XX $\pm 0.2$ mm		ANGULAR $\pm 0.25^\circ$	
2. DO NOT SCALE FROM DRAWING.		MATERIAL: ST. STEEL 304		FINISH: CLEAN, GREASE FREE	
3. ALL MACHINING FLUIDS SHALL BE WATER SOLUBLE AND FREE OF SULFUR, CHLORINE AND SILICONE, SUCH AS CINCINNATI MILACRON'S CIMTECH 410 (STAINLESS STEEL)		FINISH: $\sqrt{\mu m}$ [ $\mu in$ ]		Ra = 1.6	
4. SCRIBE, ENGRAVE OR STAMP DRAWING PARTNUMBER ON NOTED SURFACE OF PART AND A THREE DIGIT SERIAL NUMBER. SERIAL NUMBERS START AT 001 FOR THE FIRST PART AND PROCEED CONSECUTIVELY. USE .07" HIGH CHARACTERS. EXAMPLE: D020188- 001. A VIBRATORY TOOL MAY BE USED.		DRAWN: J O'DELL 19/Oct/06		CHECKED: MB 15/MAR/10	
		APPROVED: JOD 15/MAR/10		SCALE: 1:1	
				PROJECTION:	
				SHEET 1 OF 1	

CALIFORNIA INSTITUTE OF TECHNOLOGY MASSACHUSETTS INSTITUTE OF TECHNOLOGY 1GR, GLASGOW UNIVERSITY GEO 600 GROUP RUTHERFORD APPLETON LABORATORIES	
SYSTEM	eLIGO
SUB-SYSTEM	SUS
NEXT ASSY	TOP MASS QUAD
PART NAME	TOP MASS SPACER
DRG. NO.	D060397
REV	J.