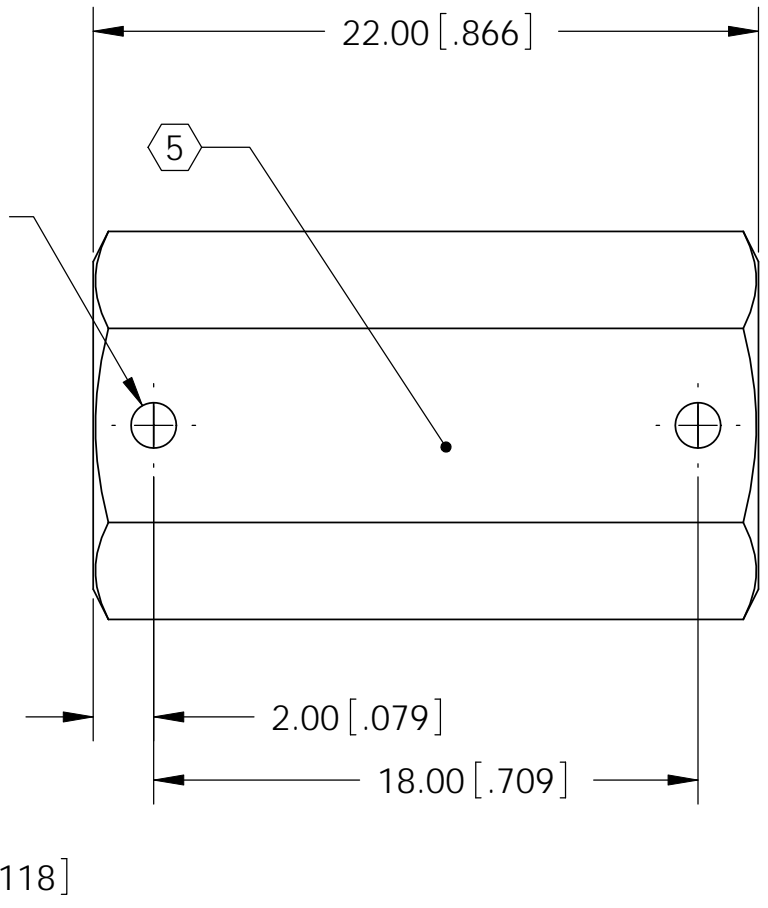
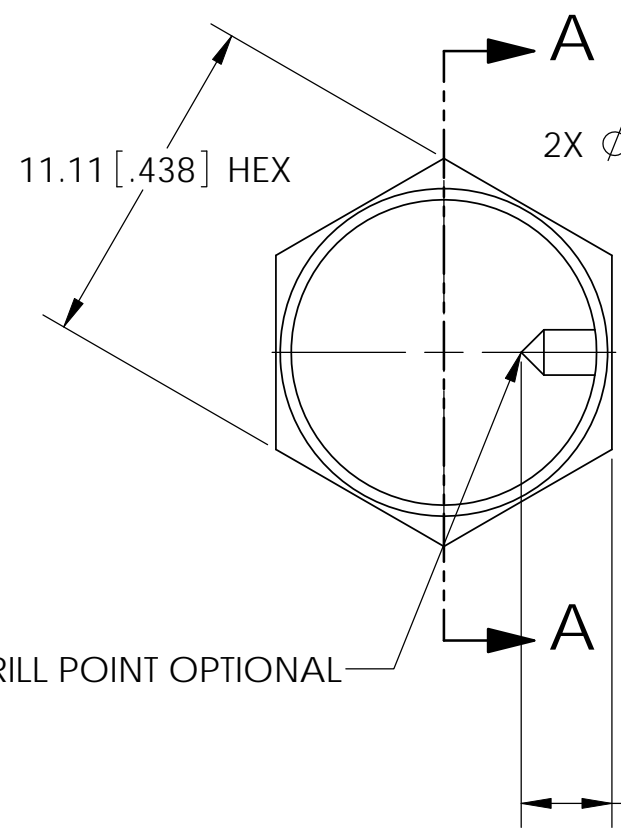
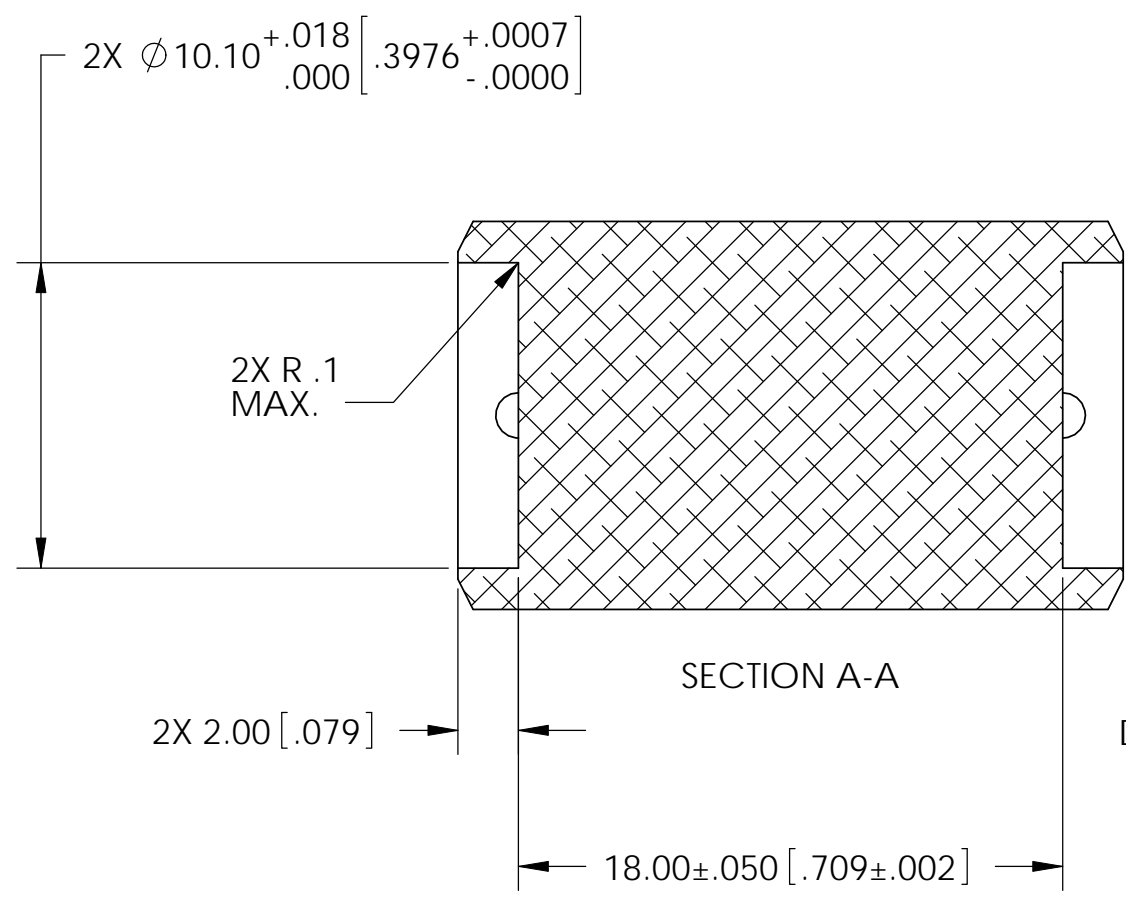


REV.	DATE	DCN #	DRAWING TREE #
v3	26 May 2011	E1100449	E1100450

NOTES CONTINUED:

4. ALL MACHINING FLUIDS MUST BE FULLY SYNTHETIC, FULLY WATER SOLUBLE AND FREE OF SULFUR, SILICONE AND CHLORINE.
5. SCRIBE, ENGRAVE, OR MECHANICALLY STAMP (NO INKS OR DYES) DRAWING PART NUMBER, REVISION (AND VARIANT OR "TYPE" IF APPLICABLE) ON NOTED SURFACE OF PART FOLLOWED ON THE NEXT LINE WITH A THREE DIGIT SERIAL NUMBER. SERIAL NUMBERS START AT 001 FOR THE FIRST ARTICLE AND PROCEED CONSECUTIVELY. USE MINIMUM 0.12 HIGH CHARACTERS, UNLESS THE SIZE OF THE PART DICTATES SMALLER CHARACTERS. A VIBRATORY TOOL MAY BE USED. EXAMPLE DXXXXXXX-VY, TYPE-XX, S/N XXX.
6. APPROXIMATE WEIGHT = 5.5 grams.
7. MACHINE ALL SURFACES TO REMOVE OXIDES AND MILL FINISH, USE OF ABRASIVE REMOVAL TECHNIQUES (INCLUDING SANDING OR SCOURING FOR MATTE FINISH) IS NOT ALLOWED. USE OF SCOTCH-BRITE OR SIMILAR PRODUCTS IS FORBIDDEN.
8. ALL PARTS SHALL BE MANUFACTURED IN ACCORDANCE WITH LIGO SPECIFICATION E0900364.
9. ALL MATERIAL IS TO BE VIRGIN MATERIAL (I.E. NOT WELD REPAIRS OR PLUGS) UNLESS APPROVED IN ADVANCE AND IN WRITING BY LIGO, REFER TO LIGO-E0900364.
10. NO REPAIRS SHALL BE MADE UNLESS APPROVED IN ADVANCE, AND IN WRITING, BY LIGO LABORATORY. IN GENERAL WELD REPAIRS AND PRESS FIT INSERT REPAIRS ARE NEVER ACCEPTABLE. THE MATERIAL USED MUST BE VIRGIN MATERIAL. SPECIAL CIRCUMSTANCES CAN BE REVIEWED IF AND WHEN BROUGHT TO THE ATTENTION OF LIGO CONTRACTING OFFICER'S REPRESENTATIVE (COTR) THROUGH THE MATERIAL REVIEW BOARD (MRB) PROCESS, REFER TO LIGO-E09000364.



D060394, PART PDM REV: X-011, DRAWING PDM REV: X-003

NOTES AND TOLERANCES: (UNLESS OTHERWISE SPECIFIED)				LIGO		CALIFORNIA INSTITUTE OF TECHNOLOGY MASSACHUSETTS INSTITUTE OF TECHNOLOGY		PART NAME											
DIMENSIONS ARE IN MM [INCHES]				1. INTERPRET DRAWING PER ASME Y14.5-1994.		ADVANCED LIGO		SUB-SYSTEM		SPACER UI MASS MAGNET AND FLAG, aLIGO SUS		DESIGNER	J.ODELL	15 Mar 2011	SIZE	DWG. NO.	REV.		
TOLERANCES: .XX ± .2[.008] .XXX ± .127[.005]				2. REMOVE ALL SHARP EDGES, .76[.03] x 45°.		SUS		DRAFTER		M.HILLARD		26 May 2011		B		D060394		v3	
ANGULAR ± .25°				3. DO NOT SCALE FROM DRAWING.		NEXT ASSY		CHECKER		J.LEWIS		26 May 2011		SCALE: 4:1		PROJECTION:		SHEET 1 OF 1	
MATERIAL				6061-T6 Al		FINISH		63 µinch		D1100937		APPROVAL		J.ROMIE		26 May 2011			