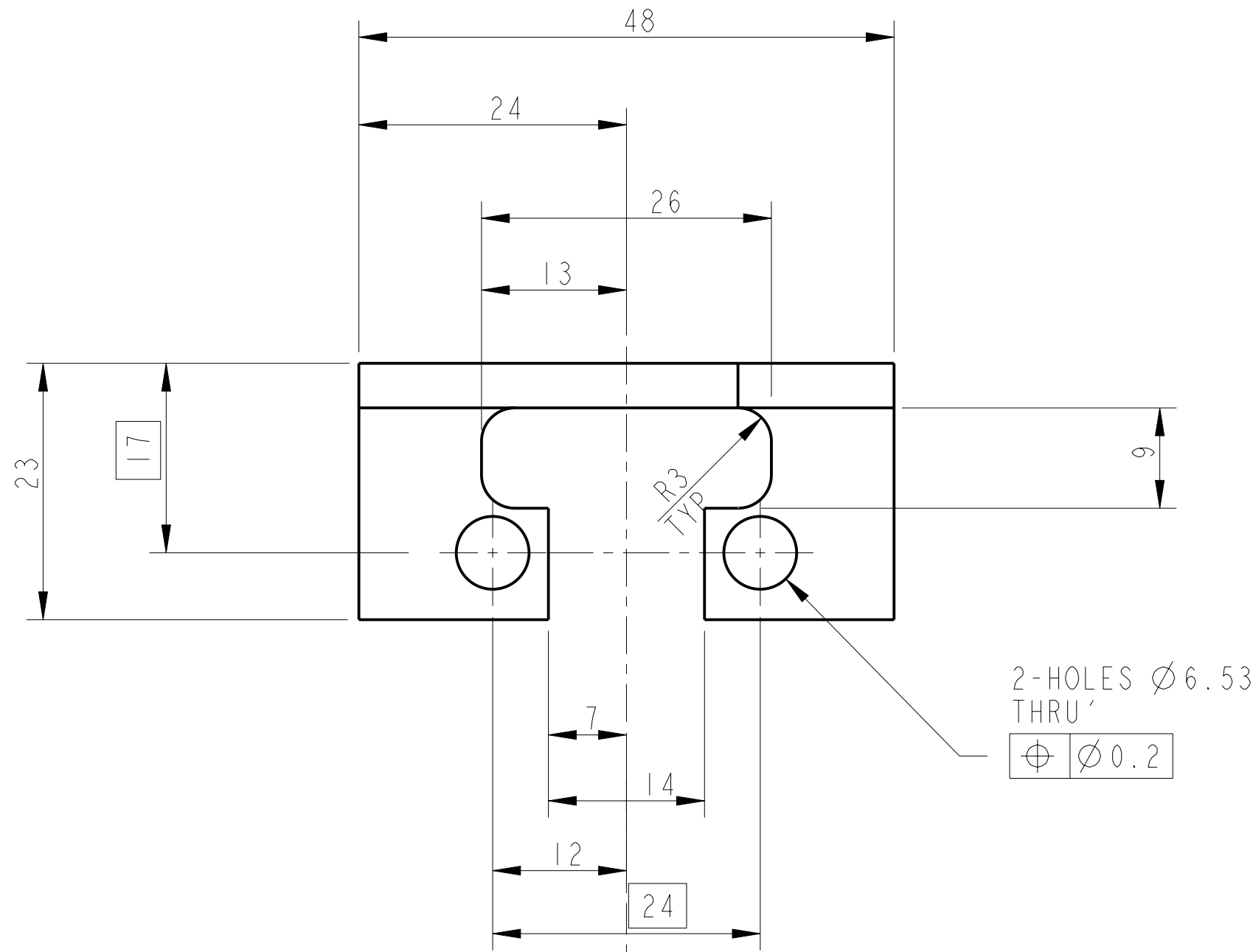
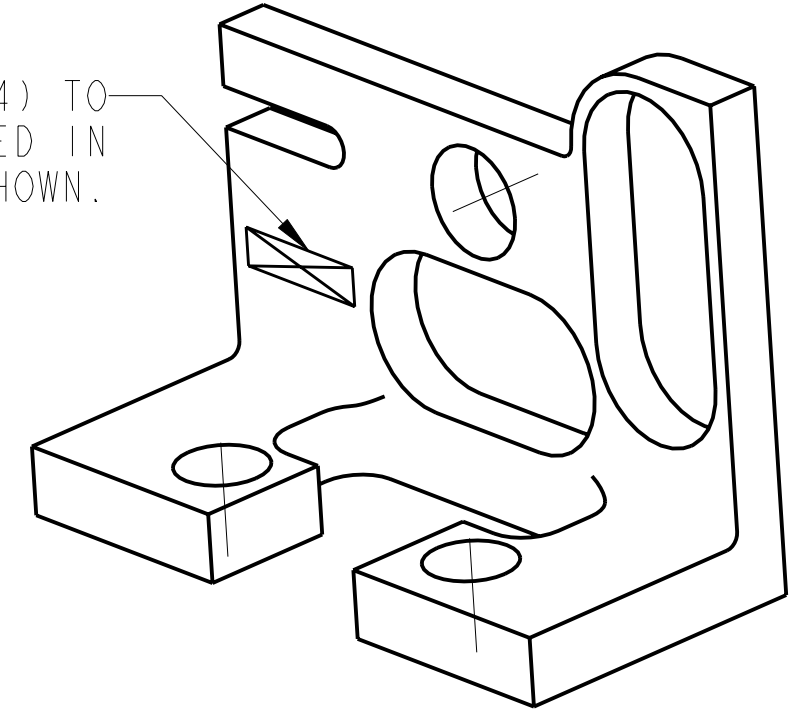


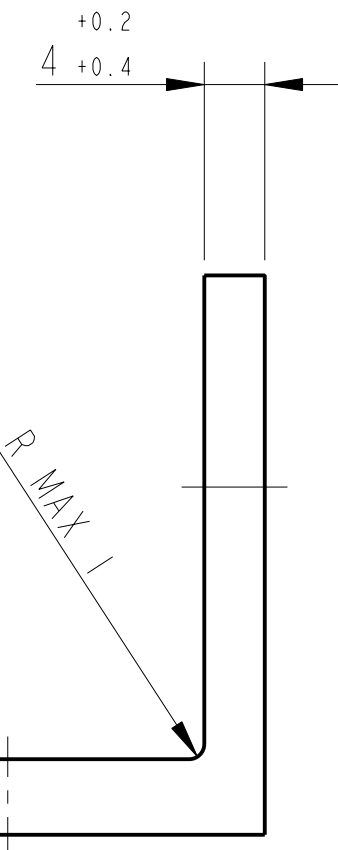
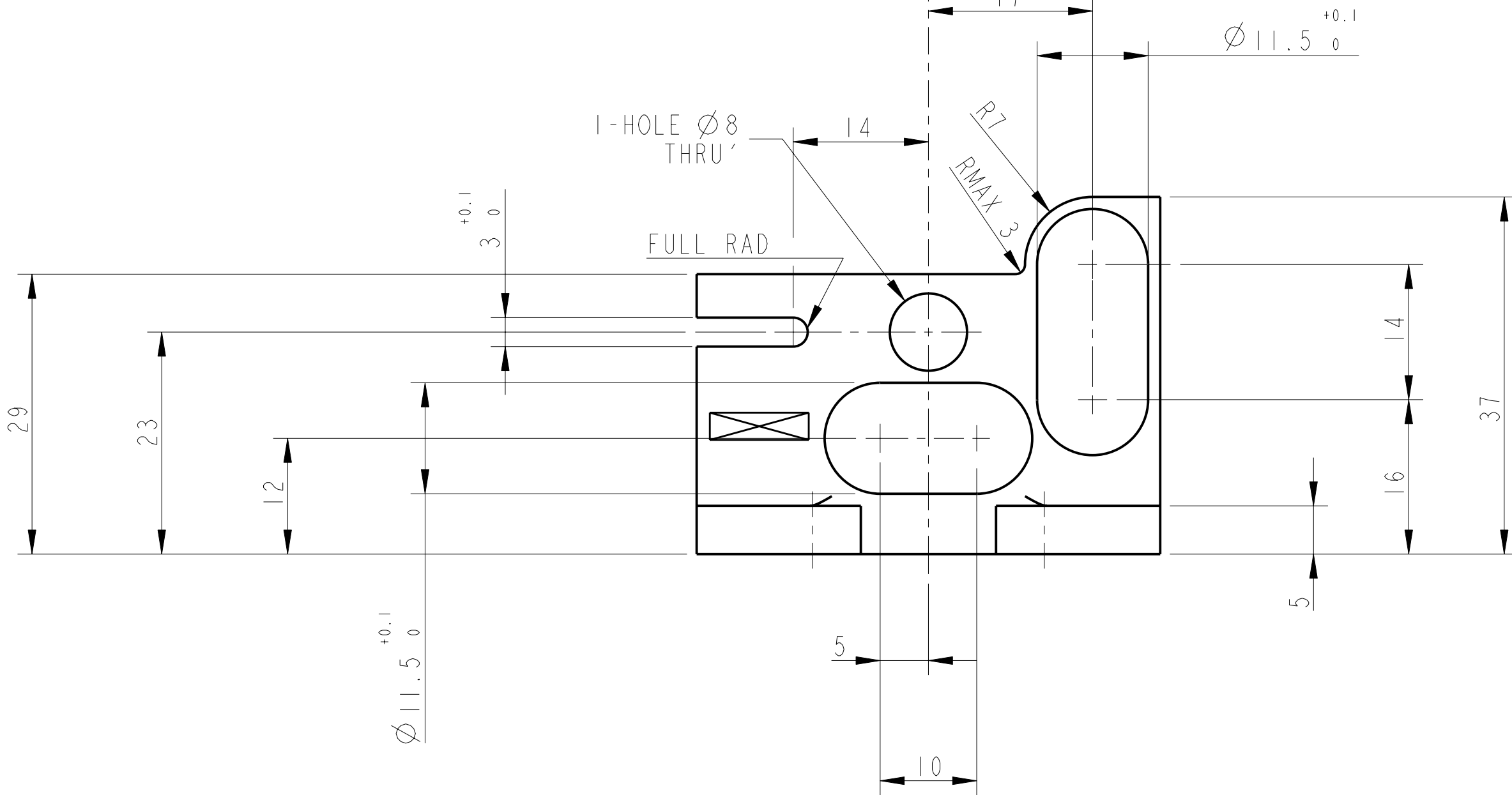
REV.	DATE	DCN #	DRAWING TREE #
A	18/OCT/06	E060247	



PART NO. (SEE NOTE 4) TO BE ETCHED OR STAMPED IN APPROX POSITION SHOWN.



3-D VIEW



NOTES: (UNLESS OTHERWISE SPECIFIED)				DIMENSIONS ARE IN mm (INCHES)		TOLERANCES:	
1.	REMOVE ALL SHARP EDGES, R. 0.2 MIN.			X.XX ±0.2 mm (INCHES)			
2.	DO NOT SCALE FROM DRAWING.			ANGULAR ±0.25°			
3.	ALL MACHINING FLUIDS SHALL BE WATER SOLUBLE AND FREE OF SULFUR, CHLORINE AND SILICONE, SUCH AS CINCINNATI MILACRON'S CIMTECH 410 (STAINLESS STEEL)						
4.	SCRIBE, ENGRAVE OR STAMP DRAWING PART NUMBER ON NOTED SURFACE OF PART AND A THREE DIGIT SERIAL NUMBER. SERIAL NUMBERS START AT 001 FOR THE FIRST PART AND PROCEED CONSECUTIVELY. USE .07" HIGH CHARACTERS. EXAMPLE: D020188-001. A VIBRATORY TOOL MAY BE USED.						
MATERIAL: AL ALLOY 5083 OR 6061		FINISH: CLEAN & DE-GREASED		Ra = 1.6			
DRAWN	NJS/FEL	DATE	18/SEPT/06	SIZE	C	DRG. NO.	D060388
CHECKED	J'OD	DATE	29/SEP/06	SCALE	2:1	PROJECTION	
APPROVED	IW	DATE	02/OCT/06	SHEET	1	OF	1

CALIFORNIA INSTITUTE OF TECHNOLOGY	
GLASGOW UNIVERSITY GEO 600 GROUP	
RUTHERFORD APPLETON LABORATORIES	
SYSTEM	ADVANCED LIGO
SUB-SYSTEM	SUS
NEXT ASSY	QUAD N-PTYPE UI MASS
PART NAME	BRACKET
UI MASS OSEM MOUNT	