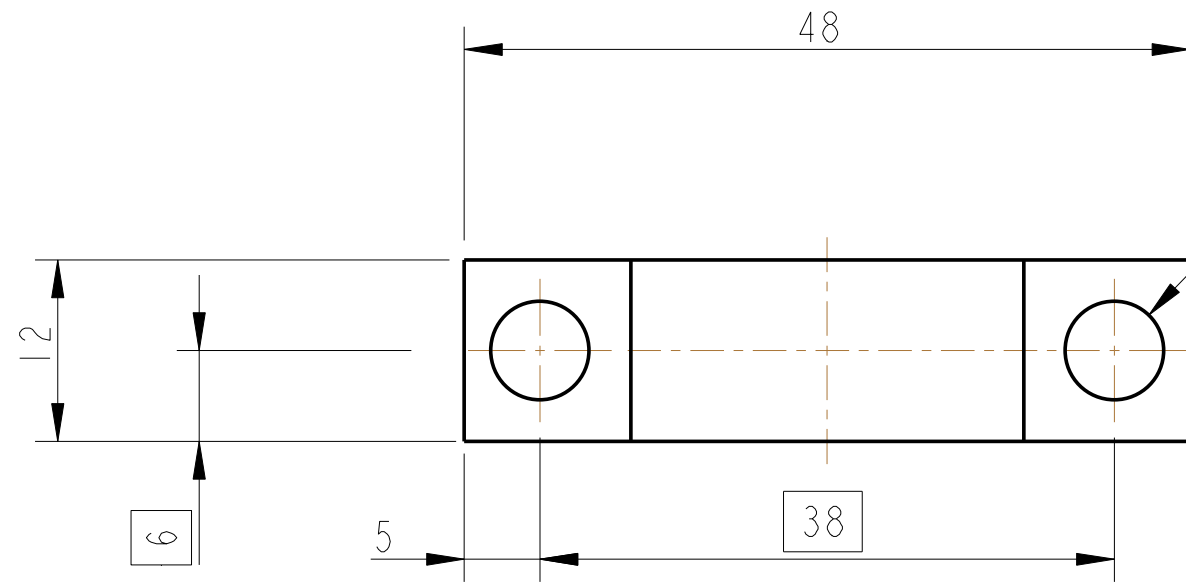
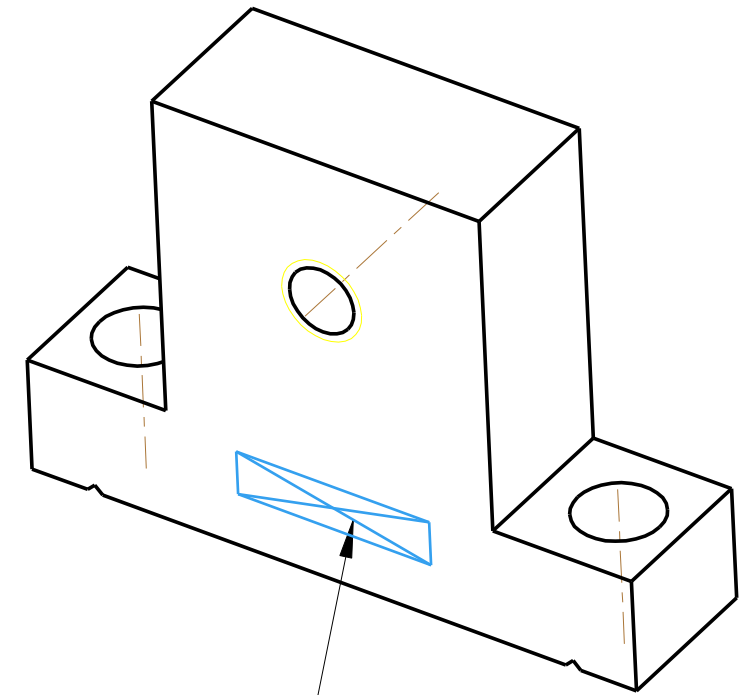
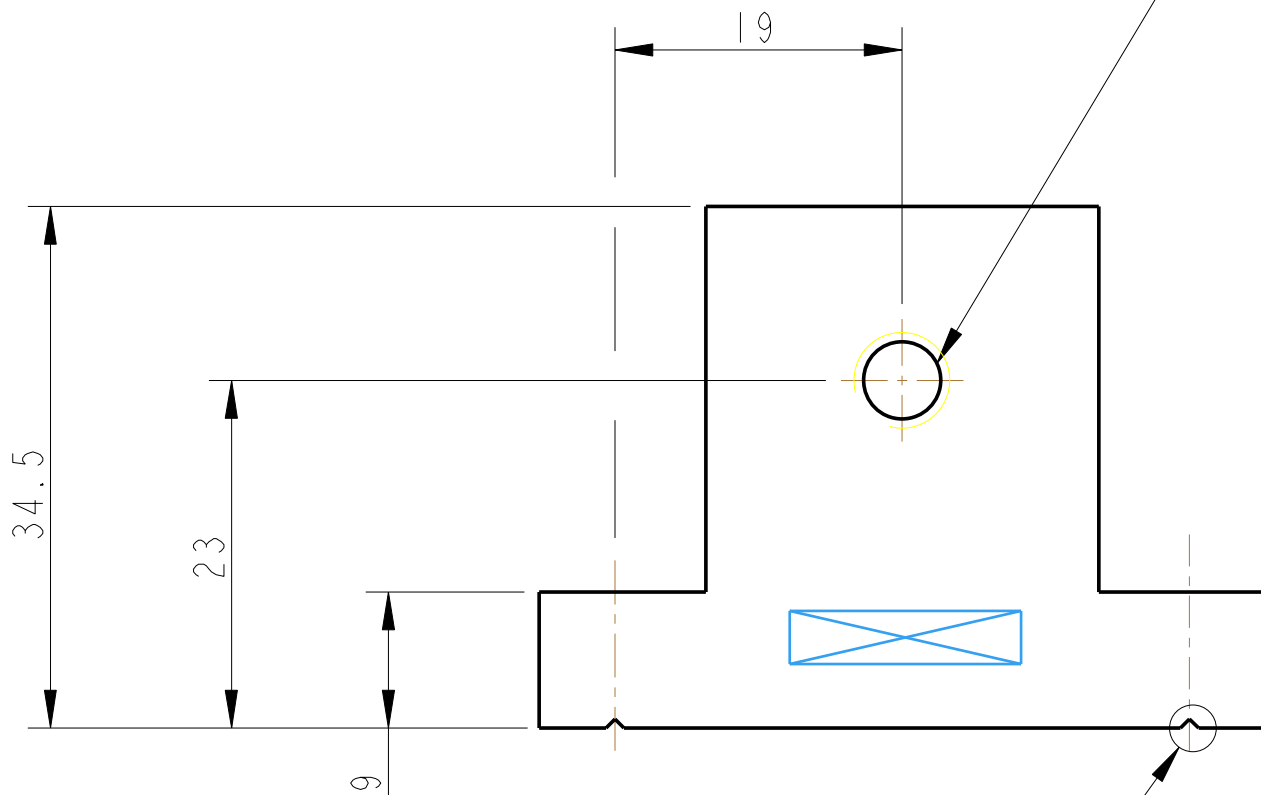


REV.	DATE	DCN #	DRAWING TREE #
A	18/OCT/06	E060247	
H	21/JULY/08	E080371	

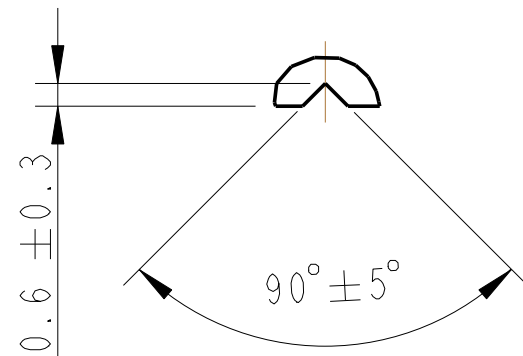
2-HOLES Ø6.5 THRU'
 $\oplus \text{ } \ominus 0.2$



1-HOLE THRU' FOR 1/4-20 UNC X 1.5D 1g HELICOIL. HELICOIL NOT TO BE FITTED.



PART NO. (SEE NOTE 4) TO BE ETCHED OR STAMPED IN APPROX POSITION SHOWN.



DETAIL A
 VENT GROOVE
 SCALE 5:1
 (2-POS)

SEE DETAIL A

NOTES: (UNLESS OTHERWISE SPECIFIED)				DIMENSIONS ARE IN mm [INCHES]		TOLERANCES:	
1. REMOVE ALL SHARP EDGES, R.02 MIN.	X.XX ±0.2 mm		ST STEEL 304/316		SCALE 2:1		CALIFORNIA INSTITUTE OF TECHNOLOGY MASSACHUSETTS INSTITUTE OF TECHNOLOGY 1GR, GLASGOW UNIVERSITY GEO 600 GROUP RUTHERFORD APPLETON LABORATORIES
2. DO NOT SCALE FROM DRAWING.	ANGULAR ±0.25 °		FINISH: CLEAN & DE-GREASED		SYSTEM ADVANCED LIGO SUB-SYSTEM SUS		
3. ALL MACHINING FLUIDS SHALL BE WATER SOLUBLE AND FREE OF SULFUR, CHLORINE AND SILICONE, SUCH AS CINCINNATI MILACRON'S CIMTECH 410 (STAINLESS STEEL)	Ra = 1.6		DRAWN NJS/FEL 15/SEP/06		NEXT ASSY QUAD N-PTYPE UI MASS PART NAME MOUNT BLOCK UI MASS FLAG MOUNT		
4. SCRIBE, ENGRAVE OR STAMP DRAWING PARTNUMBER ON NOTED SURFACE OF PART AND A THREE DIGIT SERIAL NUMBER. SERIAL NUMBERS START AT 001 FOR THE FIRST PART AND PROCEED CONSECUTIVELY. USE .07" HIGH CHARACTERS. EXAMPLE: D020188- 001. A VIBRATORY TOOL MAY BE USED.	CHECKED AJB 10JUNE08 APPROVED AJB 21/JULY/08		DATE 21/JULY/08 NAME DATE		DRG. NO. D060386 SHEET 1 OF 1		