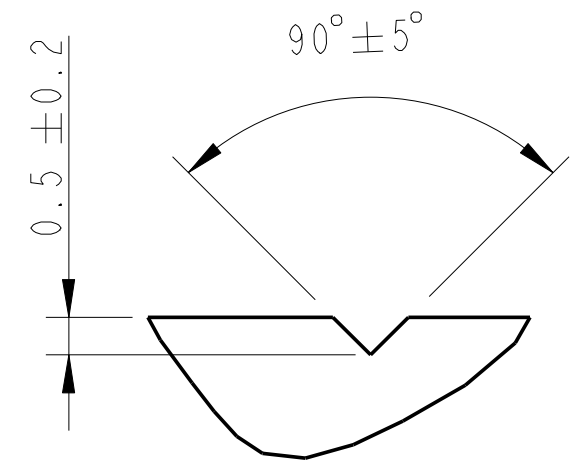
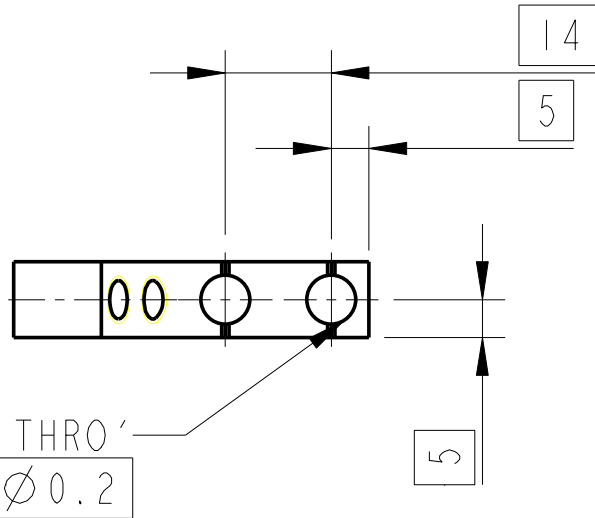
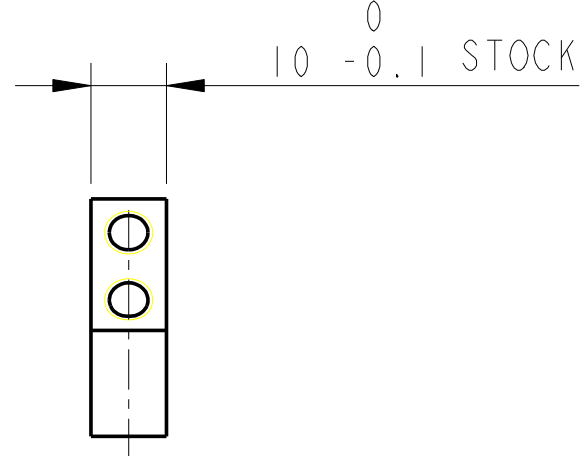


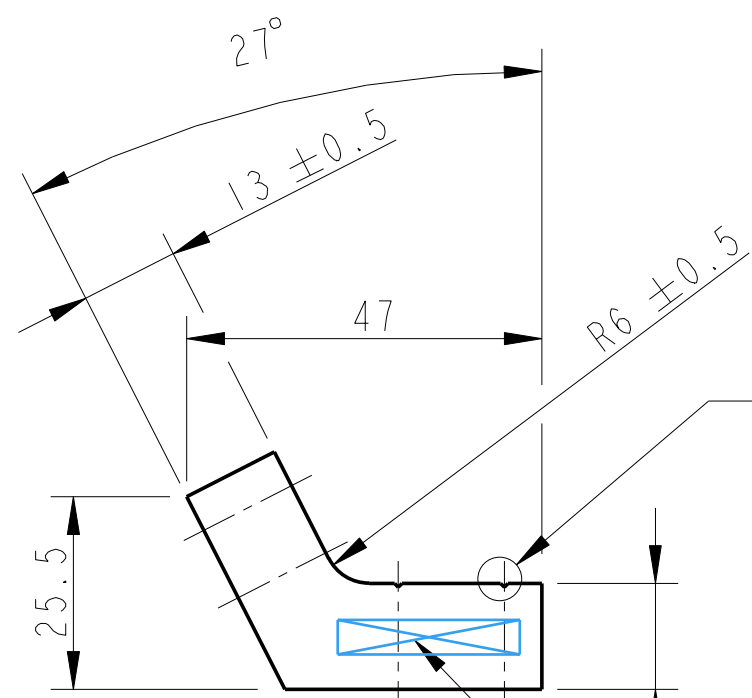
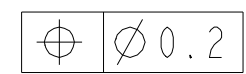
REV.	DATE	DCN #	DRAWING TREE #
A	18/OCT/06	E060247	
B	19/DEC/07	E060247-B	
H	21/JULY/08	E080371	



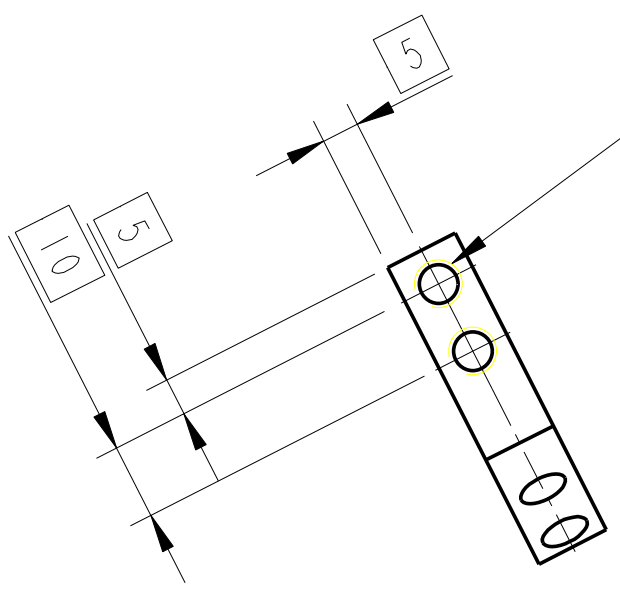
DETAIL A
SCALE 10:1
2-POS



2-HOLES FOR HELICOILS
1/4-20 UNC THRU'
HELICOILS NOT TO BE FITTED.



PART NO. (SEE NOTE 4)
TO BE ETCHED OR STAMPED
IN APPROX POSITION SHOWN.



- NOTES: (UNLESS OTHERWISE SPECIFIED)
- REMOVE ALL SHARP EDGES, R.02 MIN.
 - DO NOT SCALE FROM DRAWING.
 - ALL MACHINING FLUIDS SHALL BE WATER SOLUBLE AND FREE OF SULFUR, CHLORINE AND SILICONE, SUCH AS CINCINNATI MILACRON'S CIMTECH 410 (STAINLESS STEEL)
 - SCRIBE, ENGRAVE OR STAMP DRAWING PARTNUMBER ON NOTED SURFACE OF PART AND A THREE DIGIT SERIAL NUMBER. SERIAL NUMBERS START AT 001 FOR THE FIRST PART AND PROCEED CONSECUTIVELY. USE .07" HIGH CHARACTERS. EXAMPLE: D020188-001. A VIBRATORY TOOL MAY BE USED.

DIMENSIONS ARE IN mm [INCHES]		
TOLERANCES:		
X.XX ± 0.2 mm		
ANGULAR $\pm 0.25^\circ$		
MATERIAL: ST STEEL 304/316		
FINISH: CLEAN AND DREGRASED $\sqrt{\mu m}$ [μin] Ra = 1.6		
	NAME	DATE
DRAWN	I WILMUT	08/DEC/05
CHECKED	AJB	10 JUNE 08
APPROVED	AJB	21/JULY/08

100 CALIFORNIA INSTITUTE OF TECHNOLOGY
MASSACHUSETTS INSTITUTE OF TECHNOLOGY
1GR, GLASGOW UNIVERSITY GEO 600 GROUP
RUTHERFORD APPLETON LABORATORIES

SYSTEM **ADVANCED LIGO**

SUB-SYSTEM **SUS**

NEXT ASSY **QUAD N-PTYPE UI MASS**

PART NAME **MIDDLE WIRE, WIRE CLAMP CLAMP BODY**

STZ B DRG. NO. **D060383** REV **H.**

SCALE 1:1 PROJECTION: SHEET 1 OF 1