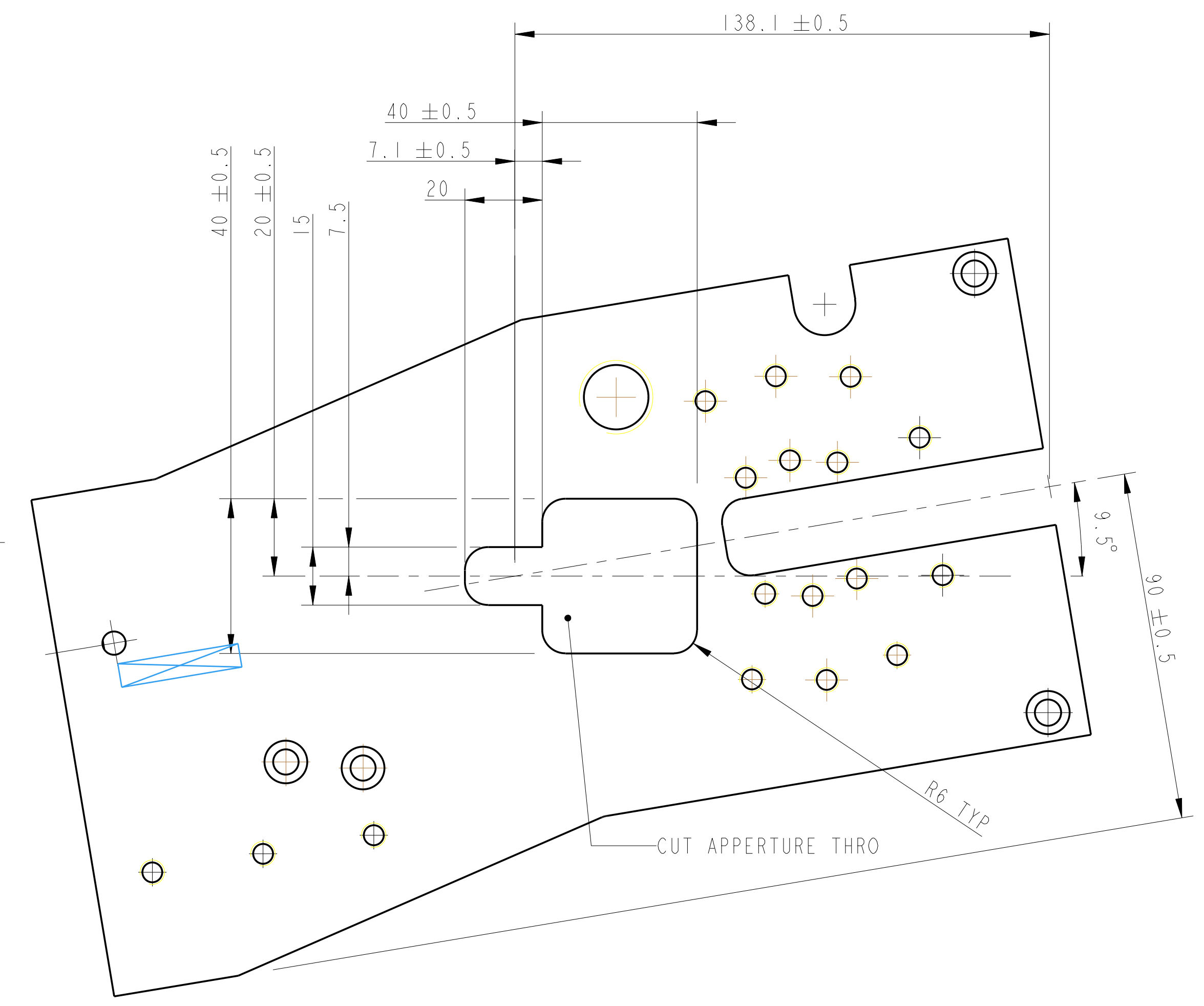
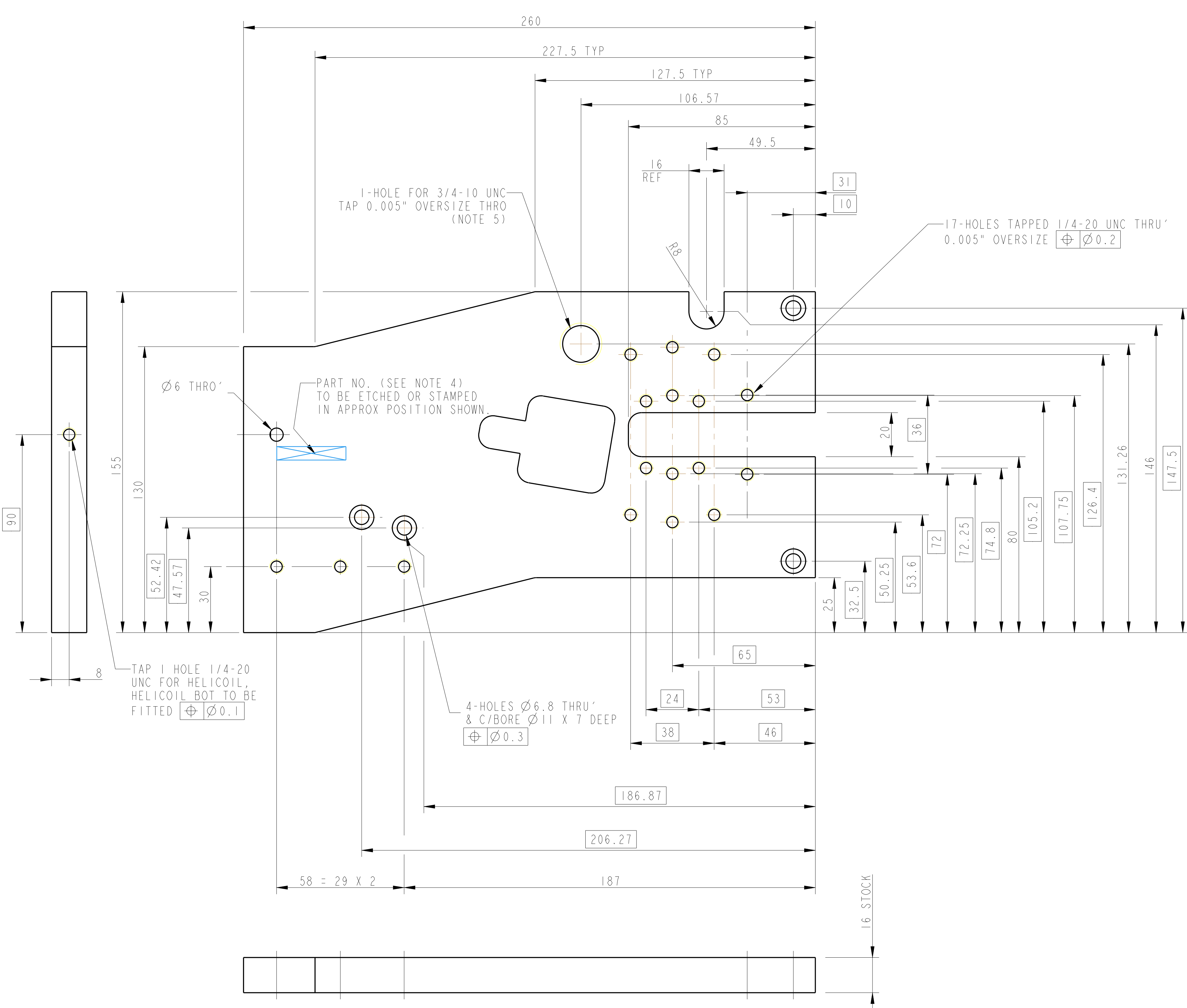


REV.	DATE	DCN #	DRAWING TREE #
A	18/OCT/06	E060247	
B	19/DEC/07	E060247-B	
H	21/JULY/08	E080371	



ADDITIONAL NOTES:

5. OVERSIZE TAPS CAN BE BROUGHT FROM MCMASTER CARR (WWW.MCMASTER.COM) PART NO. 2612A17 OR 2535A14 FOR 1/4-20 UNC

NOTES: (UNLESS OTHERWISE SPECIFIED)		DIMENSIONS ARE IN mm (INCHES)		CALIFORNIA INSTITUTE OF TECHNOLOGY MASSACHUSETTS INSTITUTE OF TECHNOLOGY RUTHERFORD APPLTON LABORATORIES	
1. REMOVE ALL SHARP EDGES. R.02 MIN.	2. DO NOT SCALE FROM DRAWING.	3. ALL MACHINING FLUIDS SHALL BE WATER SOLUBLE AND FREE OF SULFUR, CHLORINE AND SILICONE, SUCH AS CINCINNATI WILCOX'S CIMTECH 410 (STAINLESS STEEL).	4. SCRIBE, ENGRAVE OR STAMP DRAWING PART NUMBER ON NOTED SURFACE OF PART AND A THREE DIGIT SERIAL NUMBER. SERIAL NUMBERS START AT 001 FOR THE FIRST PART AND PROCEED CONSECUTIVELY. USE 07* HIGH CHARACTERS. EXAMPLE: 000008-001. A VIBRATORY TOOL MAY BE USED.	SYSTEM: ADVANCED LIGO	SUB-SYSTEM: SUS
		MATERIAL: ST STEEL 304/316	FINISH: CLEAN AND DECREASED Ra = 1.6	NEXT ASSY: QUAD N-PTYPE UI MASS	PART NAME: UI MASS TOP PLATE
		NAME: _____ DATE: _____	DRAWN: NJS/FEEL 1/SEP/06	DRG. NO.: D060382	REV. H.
		CHECKED: XJB 10/JUN/08	APPROVED: XJB 21/JULY/08	SCALE: 1:1	PROJECTION: 1st