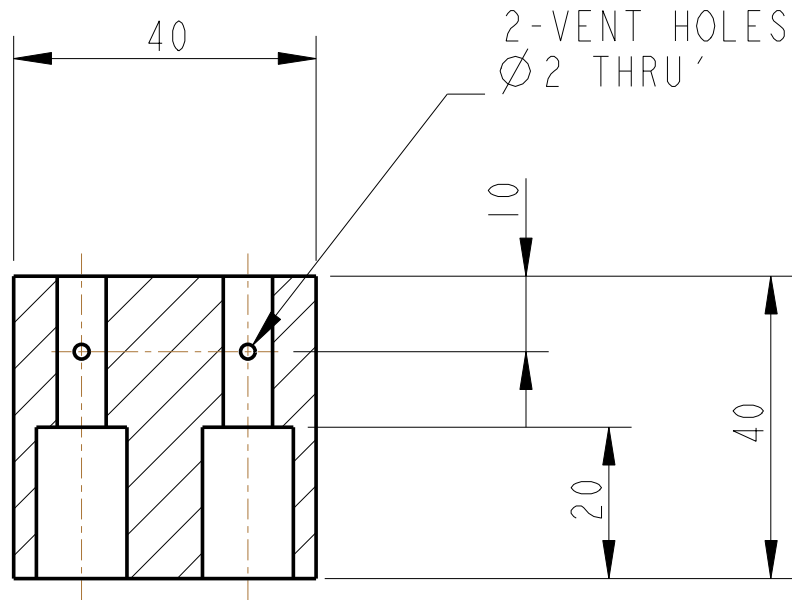
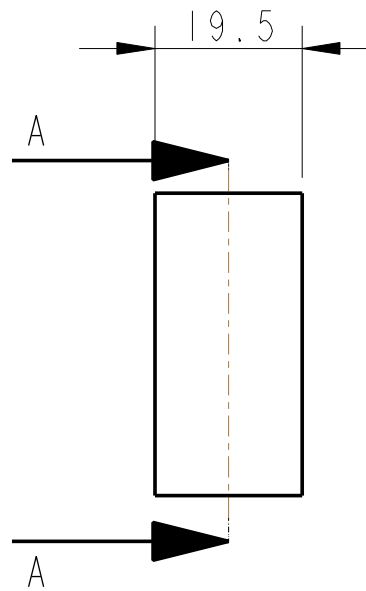


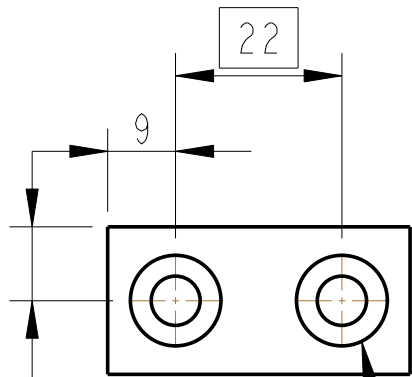
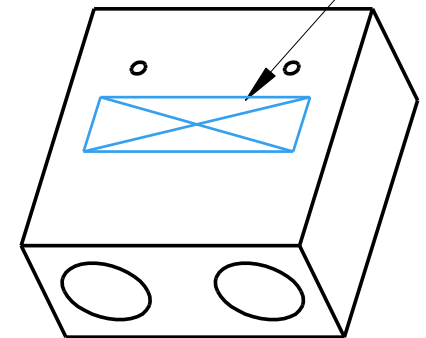
| REV. | DATE | DCN # | DRAWING TREE # |
|------|------------|-----------|----------------|
| A | 18/OCT/06 | E060247 | . |
| B | 19/DEC/07 | E060247-B | . |
| H | 21/JULY/08 | E080371 | |



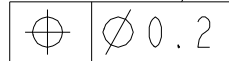
SECTION A-A



PART NO. (SEE NOTE 4)
TO BE ETCHED OR STAMPED
IN APPROX POSITION SHOWN.



2 HOLES $\phi 6.5$ THRO
C-BORE $\phi 12$



9.75

NOTES: (UNLESS OTHERWISE SPECIFIED)

1. REMOVE ALL SHARP EDGES, R.02 MIN.
2. DO NOT SCALE FROM DRAWING.
3. ALL MACHINING FLUIDS SHALL BE WATER SOLUBLE AND FREE OF SULFUR, CHLORINE AND SILICONE, SUCH AS CINCINNATI MILACRON'S CIMTECH 410 (STAINLESS STEEL)
4. SCRIBE, ENGRAVE OR STAMP DRAWING PARTNUMBER ON NOTED SURFACE OF PART AND A THREE DIGIT SERIAL NUMBER. SERIAL NUMBERS START AT 001 FOR THE FIRST PART AND PROCEED CONSECUTIVELY. USE .07" HIGH CHARACTERS. EXAMPLE: D020188- 001. A VIBRATORY TOOL MAY BE USED.

DIMENSIONS ARE IN mm [INCHES]
TOLERANCES:

X.XX ± 0.2 mm
ANGULAR $\pm 0.25^\circ$

MATERIAL: ST STEEL
304/316

FINISH: CLEAN
 $\sqrt{\mu m}$ [μin] Ra = 1.6

| | NAME | DATE |
|----------|----------|------------|
| DRAWN | I WILMUT | 26/Jun/06 |
| CHECKED | AJB | 10JUNE08 |
| APPROVED | AJB | 21/JULY/08 |



SYSTEM **ADVANCED LIGO**

SUB-SYSTEM **SUS**

NEXT ASSY **QUAD N-PTYPE UI MASS**

PART NAME **OSEM AND FLAG COUNTERWEIGHT UI MASS**

SIZE **A** DRG. NO. **D060379**

SCALE 1:1 PROJECTION: SHEET 1 OF 1