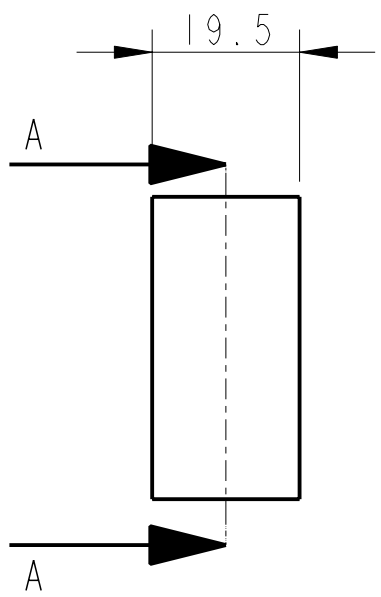
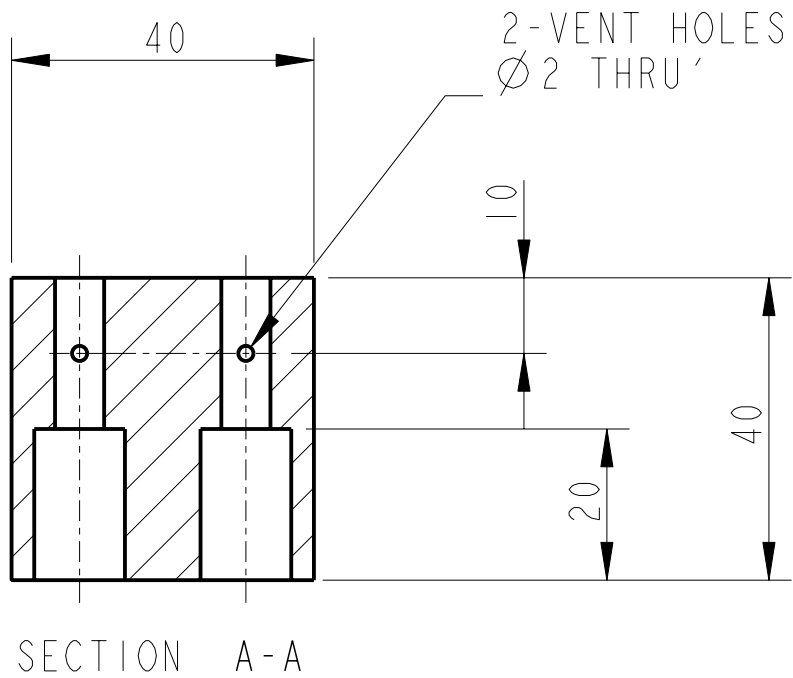
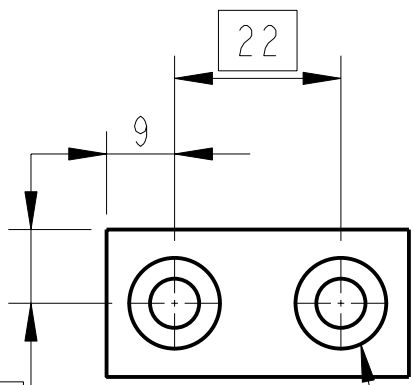
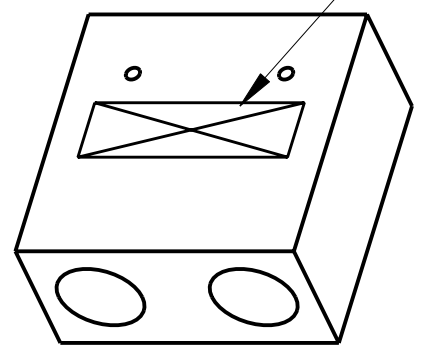


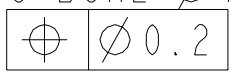
REV.	DATE	DCN #	DRAWING TREE #
A	18/OCT/06	E060247	



PART NO. (SEE NOTE 4)
TO BE ETCHED OR STAMPED
IN APPROX POSITION SHOWN.



2 HOLES Ø 6.5 THRU
C-BORE Ø 12



NOTES: (UNLESS OTHERWISE SPECIFIED)

- REMOVE ALL SHARP EDGES, R.02 MIN.
- DO NOT SCALE FROM DRAWING.
- ALL MACHINING FLUIDS SHALL BE WATER SOLUBLE AND FREE OF SULFUR, CHLORINE AND SILICONE, SUCH AS CINCINNATI MILACRON'S CIMTECH 410 (STAINLESS STEEL)
- SCRIBE, ENGRAVE OR STAMP DRAWING PARTNUMBER ON NOTED SURFACE OF PART AND A THREE DIGIT SERIAL NUMBER. SERIAL NUMBERS START AT 001 FOR THE FIRST PART AND PROCEED CONSECUTIVELY. USE .07" HIGH CHARACTERS. EXAMPLE: D020188- 001. A VIBRATORY TOOL MAY BE USED.

DIMENSIONS ARE IN mm [INCHES]		
TOLERANCES:		
X.XX ±0.2 mm		
ANGULAR ±0.25 °		
MATERIAL: ST STEEL 303/304/316		
FINISH: CLEAN		
√μm [μin] Ra = 1.6		
	NAME	DATE
DRAWN	I WILMUT	26/Jun/06
CHECKED	J'OD	15/SEPT/06
APPROVED	IW	15/SEPT/06

CALIFORNIA INSTITUTE OF TECHNOLOGY MASSACHUSETTS INSTITUTE OF TECHNOLOGY IGR, GLASGOW UNIVERSITY GEO 600 GROUP RUTHERFORD APPLETON LABORATORIES	
SYSTEM	ADVANCED LIGO
SUB-SYSTEM	SUS
NEXT ASSY	QUAD N-PTYPE UI MASS
PART NAME	OSEM AND FLAG COUNTERWEIGHT UI MASS
SIZE	A
DRG. NO.	D060379
SCALE 1:1	PROJECTION:
SHEET	1 OF 1