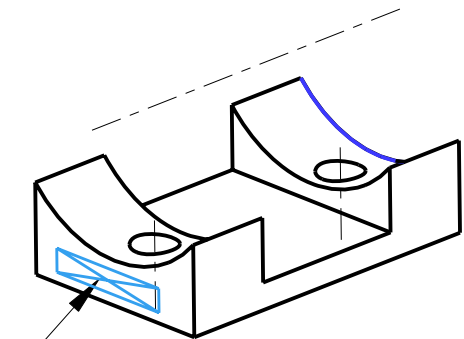
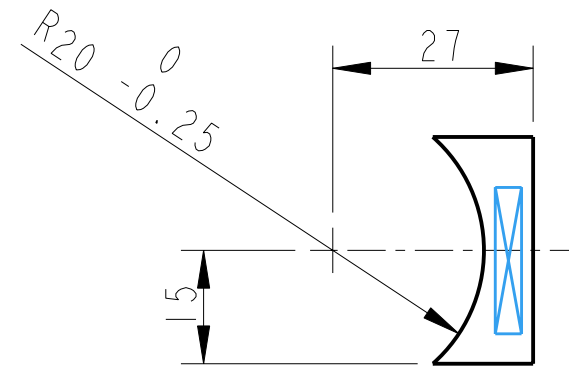
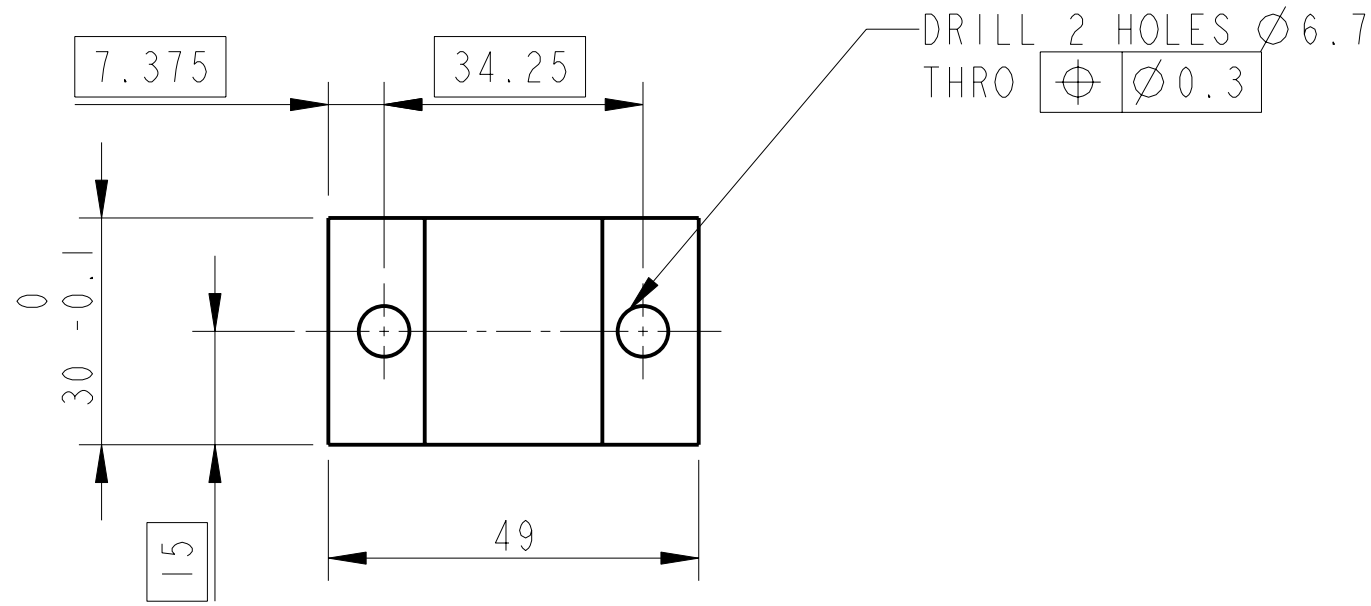
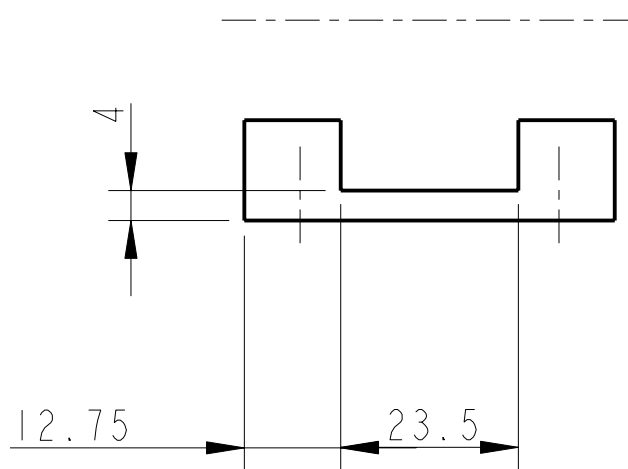


REV.	DATE	DCN #	DRAWING TREE #
A	18/OCT/06	E060247	
B	19/DEC/07	E060247-B	



PART NO. (SEE NOTE 4)
TO BE ETCHED OR STAMPED
IN APPROX POSITION SHOWN.

3D VIEW



NOTES: (UNLESS OTHERWISE SPECIFIED)		CALIFORNIA INSTITUTE OF TECHNOLOGY MASSACHUSETTS INSTITUTE OF TECHNOLOGY IGR, GLASGOW UNIVERSITY GEO 600 GROUP RUTHERFORD APPLETON LABORATORIES	
1. REMOVE ALL SHARP EDGES, R.02 MIN.	DIMENSIONS ARE IN mm [INCHES] TOLERANCES: X.XX ± 0.1 mm ANGULAR $\pm 0.25^\circ$	SYSTEM	aLIGO
2. DO NOT SCALE FROM DRAWING.		SUB-SYSTEM	SUS
3. ALL MACHINING FLUIDS SHALL BE WATER SOLUBLE AND FREE OF SULFUR, CHLORINE AND SILICONE, SUCH AS CINCINNATI MILACRON'S CIMTECH 410 (STAINLESS STEEL)	MATERIAL: AL ALLOY 5083 OR 6061	NEXT ASSY	QUAD UI MASS
4. SCRIBE, ENGRAVE OR STAMP DRAWING PART NUMBER ON NOTED SURFACE OF PART AND A THREE DIGIT SERIAL NUMBER. SERIAL NUMBERS START AT 001 FOR THE FIRST PART AND PROCEED CONSECUTIVELY. USE .07" HIGH CHARACTERS. EXAMPLE: D020188- 001. A VIBRATORY TOOL MAY BE USED.	FINISH: CLEAN, GREASE FREE $\sqrt{\mu m}$ [μin] Ra = 1.6	PART NAME	BLADE TIP Z POSITION ADJ (BTM HALF PART 2)
		SIZE	B
		DRG. NO.	D060377
		REV	H.
		SCALE	1:1
		PROJECTION	AS SHOWN
		SHEET	1 OF 1