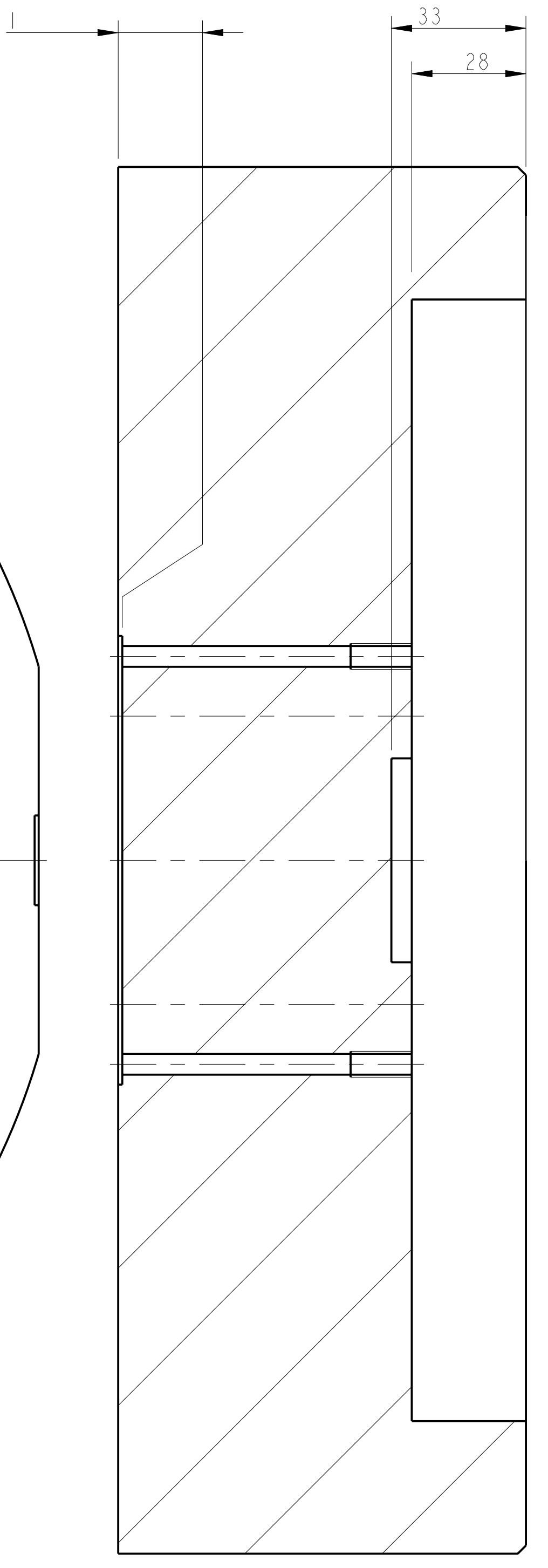
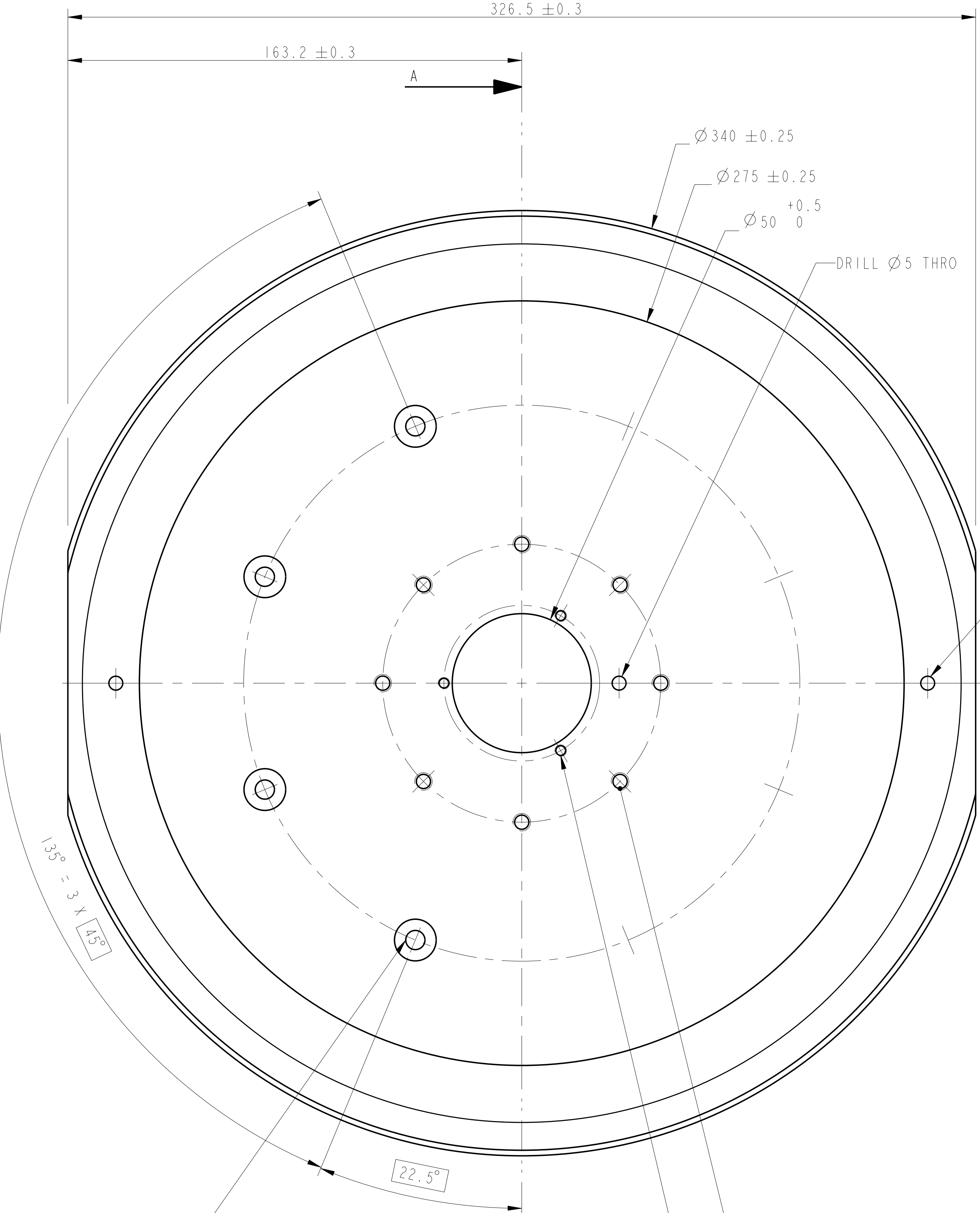


TAP 4 HOLES FOR 1/4-20 UNC HELICOIL X 15 DP ON A [200] PCD, DRILL Ø4 THRO, HELICOIL NOT TO BE FITTED



SECTION A-A

4 HOLES Ø6.9 THRO C-BORE Ø15 X 60 DP ON A [200] PCD



8 HOLES TAP FOR 1/4-20 UNC HELICOIL X 15 DP EQUISPACED ON A [Ø100] PCD DRILL Ø6 THRO, HELICOILS NOT TO BE FITTED

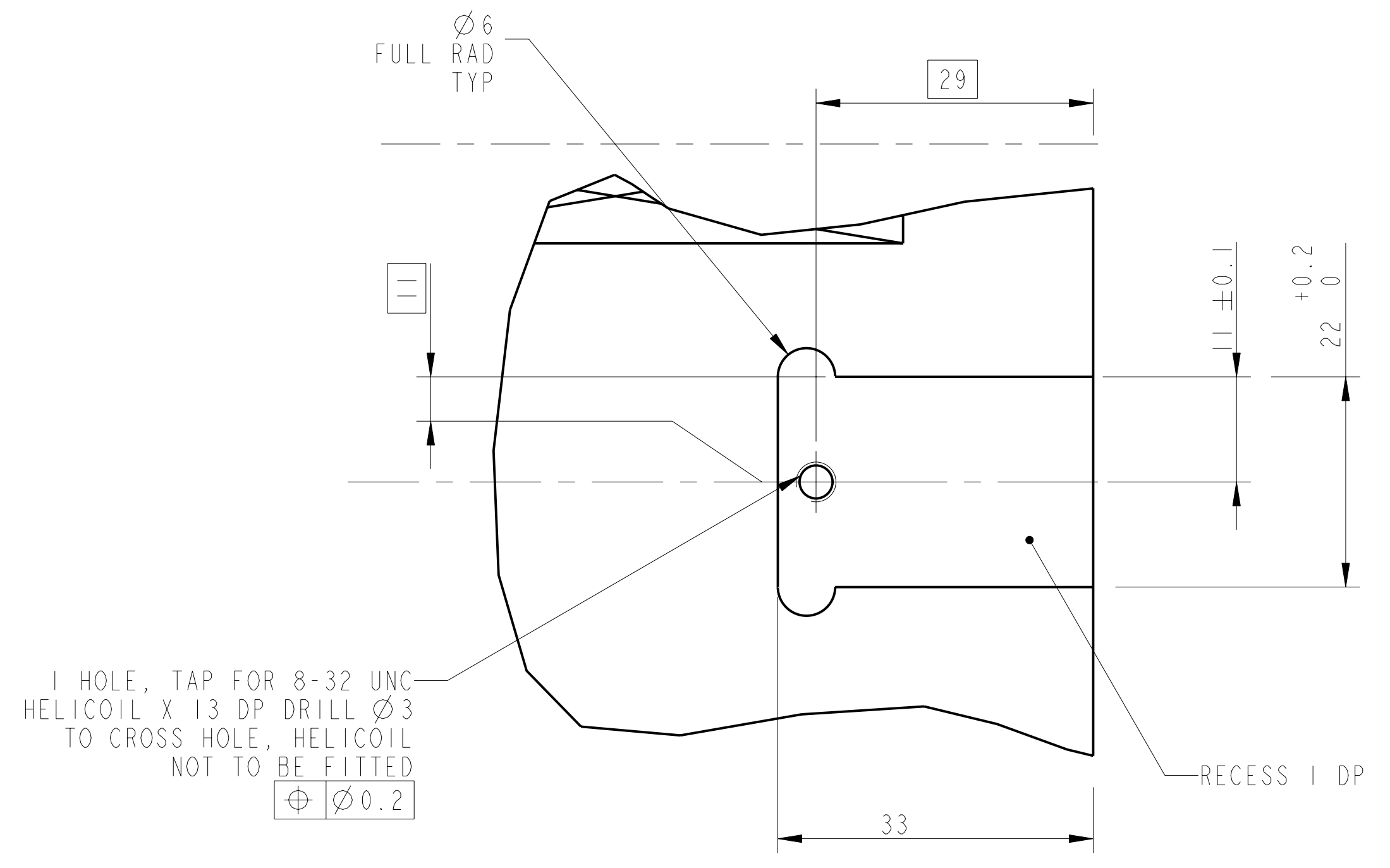
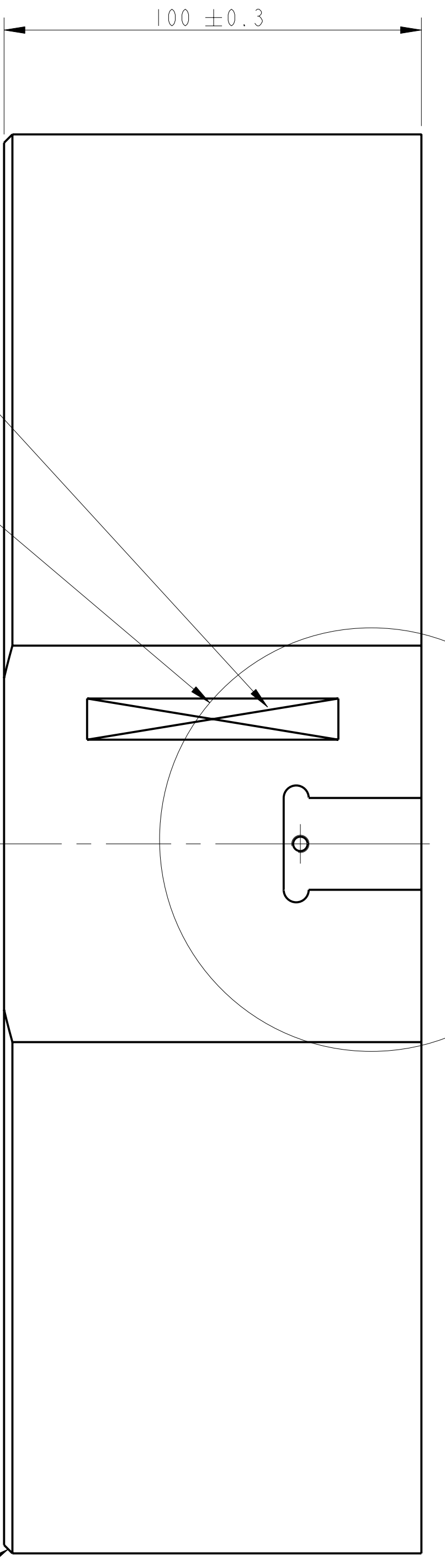
3 HOLES EQUISPACED ON A Ø56 PCD TAP FOR 8-32 UNC HELICOIL 17 DP, DRILL Ø3 THRO

CHAMFER 2 X 45°

PART No. SEE NOTE 4

SEE DETAIL B

2 HOLES Ø5 X 75 DP



1 HOLE, TAP FOR 8-32 UNC HELICOIL X 13 DP DRILL Ø3 TO CROSS HOLE, HELICOIL NOT TO BE FITTED

DETAIL B SCALE 2:1 2 POSITIONS

NOTES: UNLESS OTHERWISE SPECIFIED:

1. REMOVE ALL SHARP EDGES.	2. DIMENSIONS ARE IN mm UNLESS OTHERWISE SPECIFIED.
3. DO NOT SCALE FROM DRAWING.	4. SURFACE FINISH: RAZOR SHARP POINTS.
5. ALL WORKING DIMENSIONS SHALL BE GIVEN TO THE CLOSEST 0.05mm.	6. UNLESS OTHERWISE SPECIFIED, ALL DIMENSIONS SHALL BE TO THE CENTERLINE OF THE PART.
7. UNLESS OTHERWISE SPECIFIED, ALL DIMENSIONS SHALL BE TO THE CENTERLINE OF THE PART.	8. UNLESS OTHERWISE SPECIFIED, ALL DIMENSIONS SHALL BE TO THE CENTERLINE OF THE PART.
9. UNLESS OTHERWISE SPECIFIED, ALL DIMENSIONS SHALL BE TO THE CENTERLINE OF THE PART.	10. UNLESS OTHERWISE SPECIFIED, ALL DIMENSIONS SHALL BE TO THE CENTERLINE OF THE PART.

PROJECT	001 - 4 VIBRATION	DATE	15/02/2016
DRAWN	EM6024P	CHKD	EM6024P
APPROVED	EM6024P	DATE	15/02/2016

CALIFORNIA INSTITUTE OF TECHNOLOGY
 CALIFORNIA INSTITUTE OF TECHNOLOGY
 CALIFORNIA INSTITUTE OF TECHNOLOGY
 CALIFORNIA INSTITUTE OF TECHNOLOGY

ADVANCED LIGO
 SUB-SYSTEM: SUS
 PART NAME: QUAD NPTYPE DUMMY MASSES
 DUMMY TEST MASS SIDE
 SHEET 1 OF 1