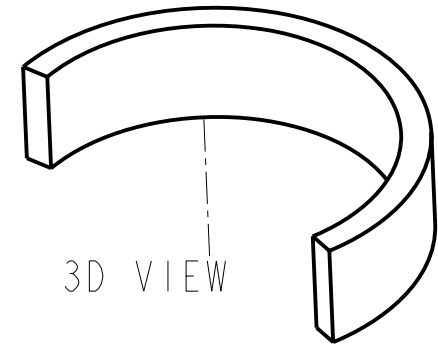
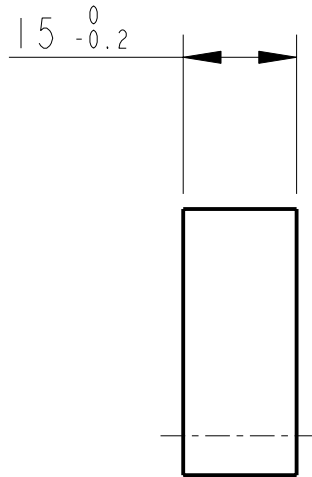
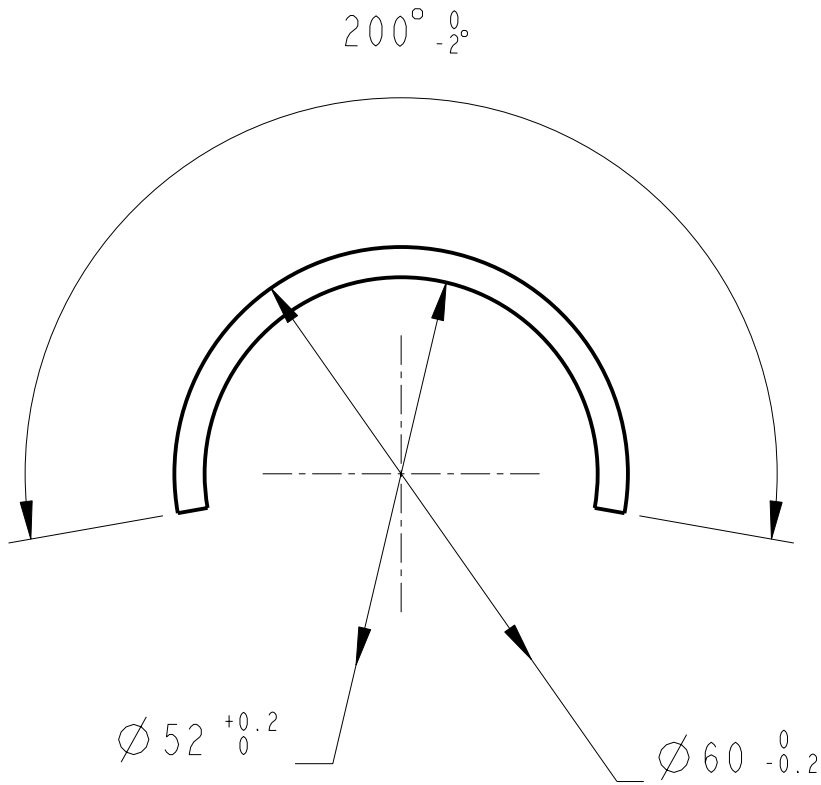


REV.	DATE	DCN #	DRAWING TREE #
A	15/OCT/06	E060240	.
B	20/DEC/07	E060240-B	.



3D VIEW

NOTES: (UNLESS OTHERWISE SPECIFIED)

1. REMOVE ALL SHARP EDGES, R.02 MIN.
2. DO NOT SCALE FROM DRAWING.
3. ALL MACHINING FLUIDS SHALL BE WATER SOLUBLE AND FREE OF SULFUR, CHLORINE AND SILICONE, SUCH AS CINCINNATI MILACRON'S CIMTECH 410 (STAINLESS STEEL)
4. SCRIBE, ENGRAVE OR STAMP DRAWING PARTNUMBER ON NOTED SURFACE OF PART AND A THREE DIGIT SERIAL NUMBER. SERIAL NUMBERS START AT 001 FOR THE FIRST PART AND PROCEED CONSECUTIVELY. USE .07" HIGH CHARACTERS. EXAMPLE: D020188- 001. A VIBRATORY TOOL MAY BE USED.

DIMENSIONS ARE IN mm [INCHES]
TOLERANCES:

X.XX ± 0.2 mm
ANGULAR $\pm 0.25^\circ$

MATERIAL: PH BRONZE


FINISH: CLEAN GREASE FREE
 $\sqrt{\mu m}$ [μin] $R_a = 1.6$

	NAME	DATE
DRAWN	J O'DELL	04/JAN/06
CHECKED	IW	27/SEP/06
APPROVED	IW	27/SEP/06

 CALIFORNIA INSTITUTE OF TECHNOLOGY
MASSACHUSETTS INSTITUTE OF TECHNOLOGY
IGR, GLASGOW UNIVERSITY GEO 600 GROUP
RUTHERFORD APPLETON LABORATORIES

SYSTEM	ADVANCED LIGO
SUB-SYSTEM	SUS
NEXT ASSY	PENRE ETM QUAD N-PTYPE
PART NAME	CLAMPING COLLAR (PITCH MASS)

SIZE	DRG. NO.	REV
A	D060354	E

SCALE 1:1 PROJECTION:  SHEET 1 OF 1