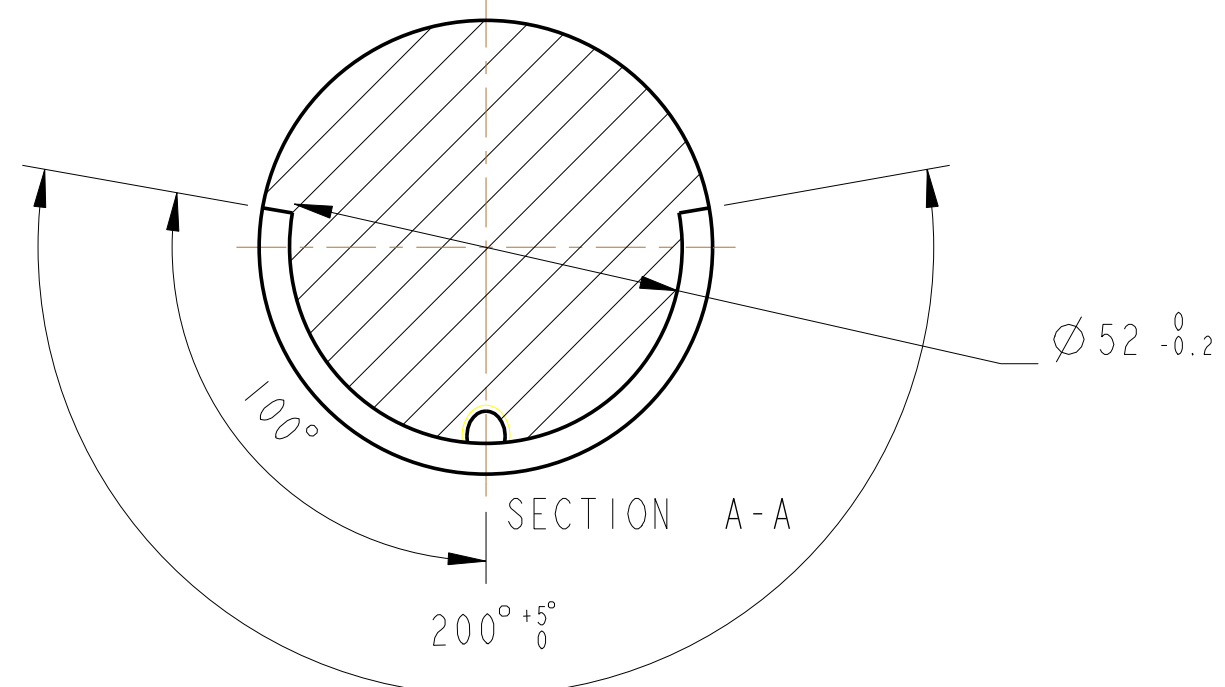
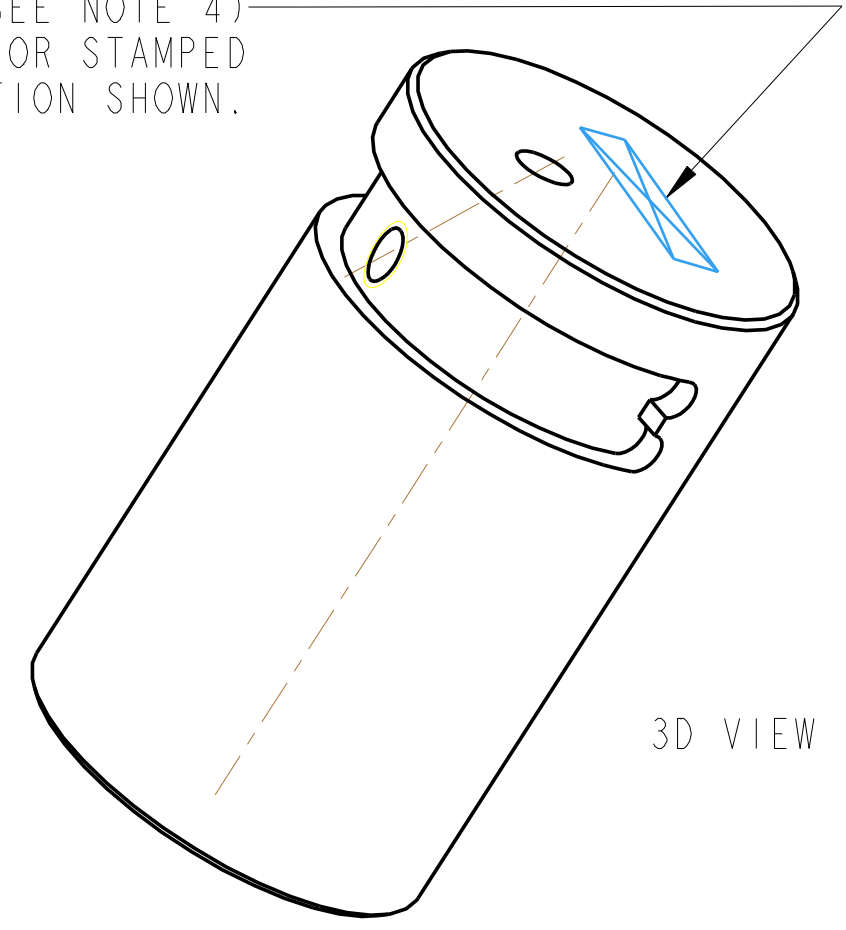


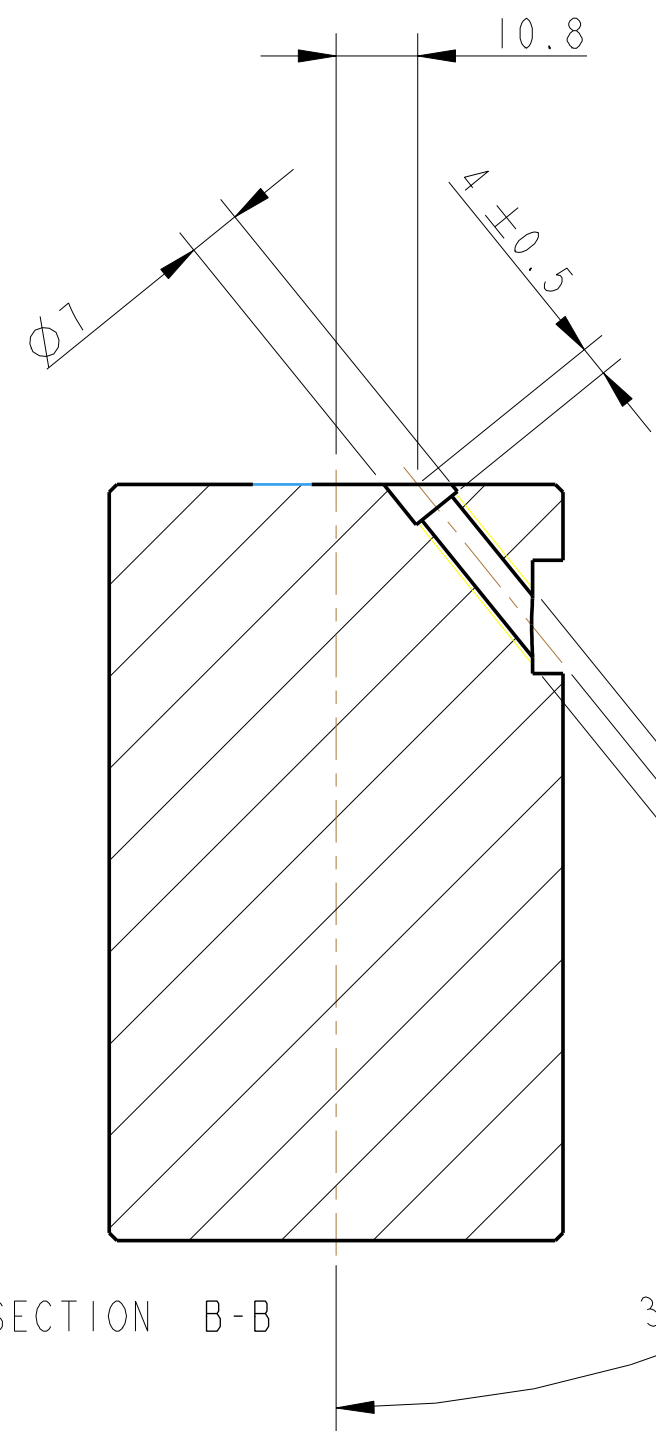
REV.	DATE	DCN #	DRAWING TREE #
A	15/OCT/06	E060240	
B	20/DEC/07	E060240-B	
F	21/JULY/08	E080370	



PART NO. (SEE NOTE 4)
TO BE ETCHED OR STAMPED
IN APPROX POSITION SHOWN.



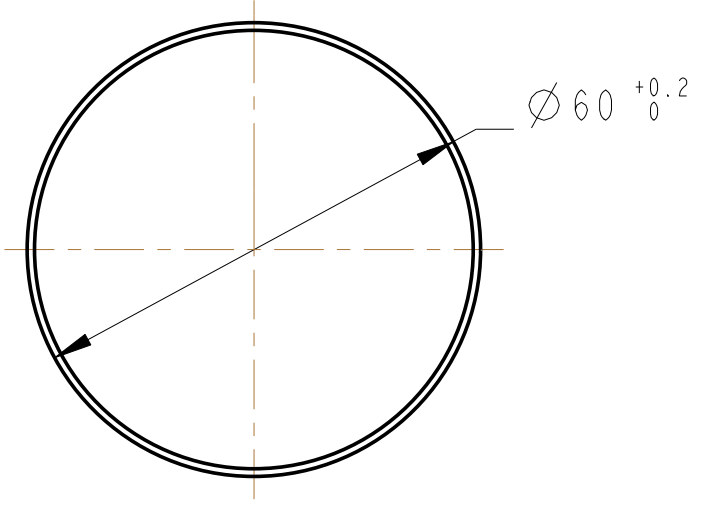
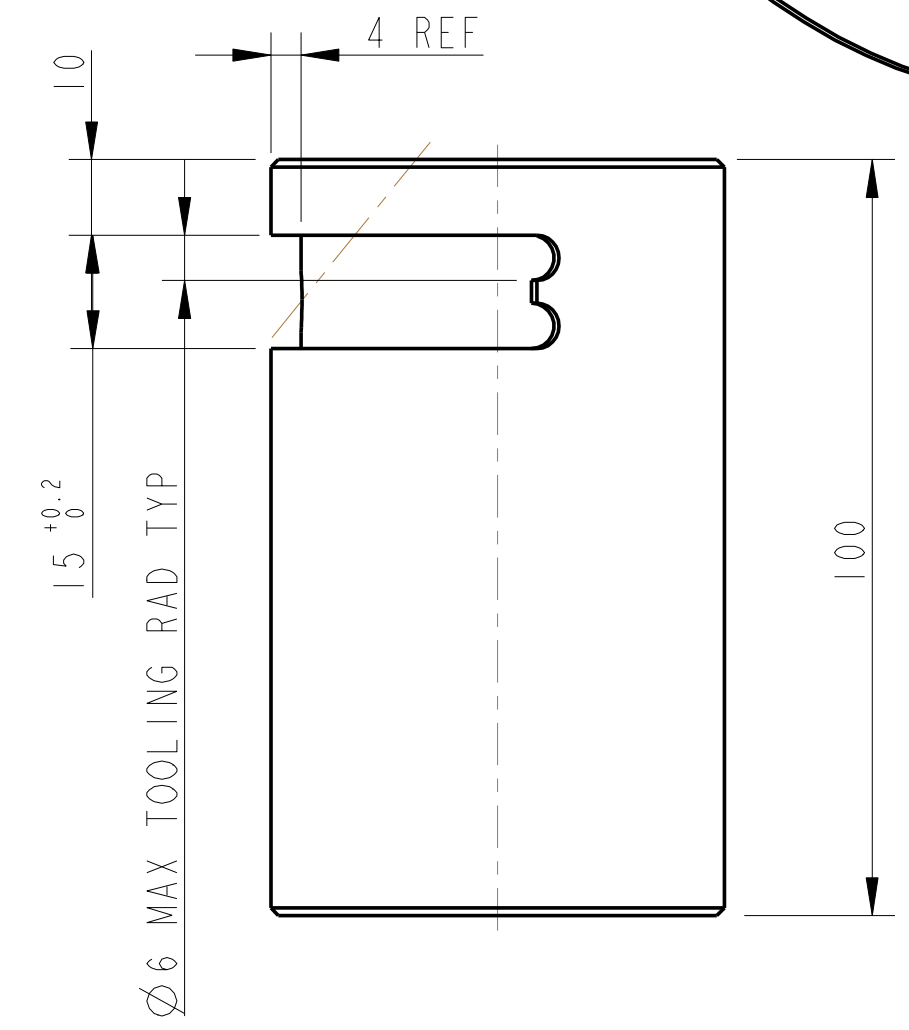
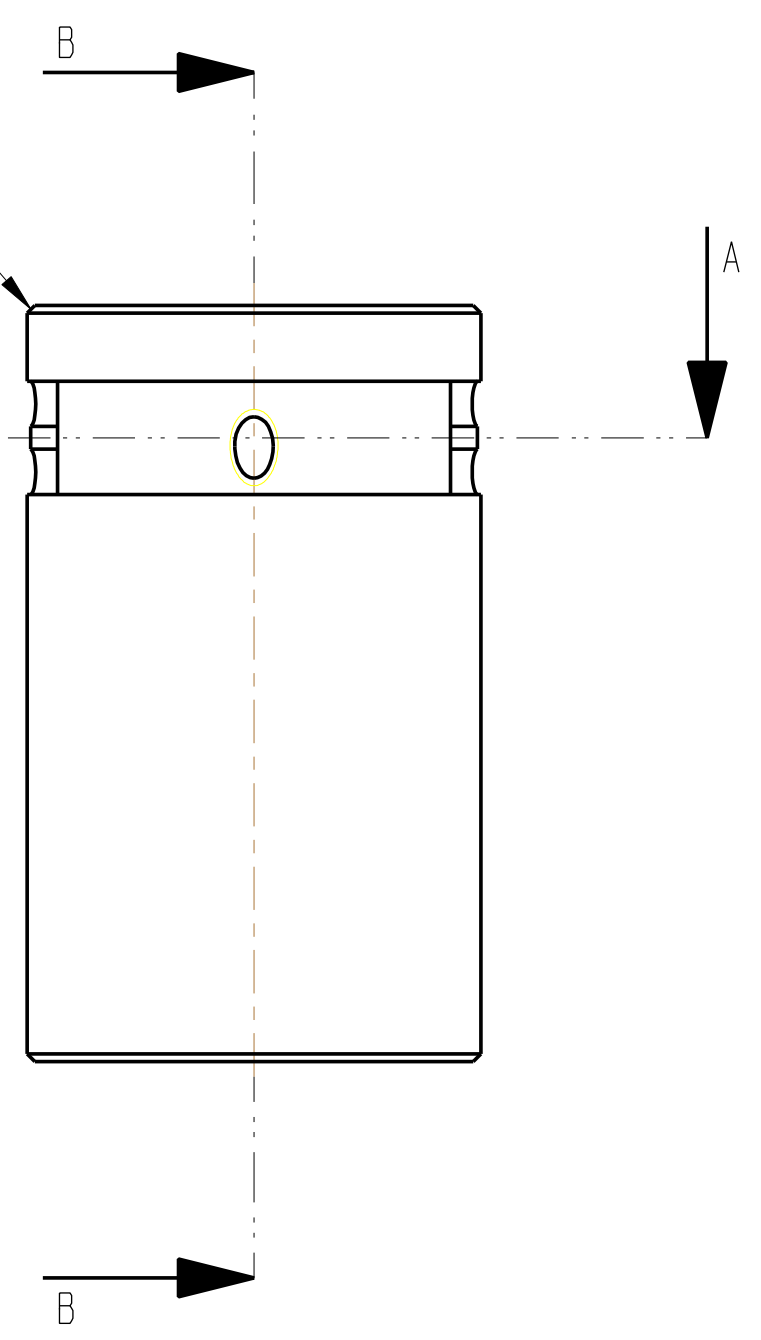
3D VIEW



SECTION B-B

1 X 45°
2 PLACES

TAP 1 HOLE FOR
FOR 1/4-20 UNC
HELICOILS THRU;
HELICOILS NOT
TO BE FITTED



NOTES: (UNLESS OTHERWISE SPECIFIED)

- REMOVE ALL SHARP EDGES, R.02 MIN.
- DO NOT SCALE FROM DRAWING.
- ALL MACHINING FLUIDS SHALL BE WATER SOLUBLE AND FREE OF SULFUR, CHLORINE AND SILICONE, SUCH AS CINCINNATI MILACRON'S CIMTECH 410 (STAINLESS STEEL).
- SCRIBE, ENGRAVE OR STAMP DRAWING PART NUMBER ON NOTED SURFACE OF PART AND A THREE DIGIT SERIAL NUMBER. SERIAL NUMBERS START AT 001 FOR THE FIRST PART AND PROCEED CONSECUTIVELY. USE .07" HIGH CHARACTERS. EXAMPLE: 0020188-001. A VIBRATORY TOOL MAY BE USED.

DIMENSIONS ARE IN mm (INCHES)

X.XX ± 0.2
ANGULAR ± 0.25 °

MATERIAL: ST. STEEL 304/316

FINISH: CLEAN, GREASE FREE
√μm [μin] Ra = 1.6

DATE	NAME	DATE
18/SEP/06	J O'DELL	
5MAY08	AJB	
18/JULY/08	AJB	

SCALE 1:1 PROJECTION: SHEET 1 OF 1

CALIFORNIA INSTITUTE OF TECHNOLOGY
MASSACHUSETTS INSTITUTE OF TECHNOLOGY
1GR, GLASGOW UNIVERSITY GEO 600 GROUP
RUTHERFORD APPLETON LABORATORIES

SYSTEM: **ADVANCED LIGO**

SUB-SYSTEM: **SUS**

NEXT ASSY: **PENRE ETM QUAD N-PTYPE**

PART NAME: **PEN RE PITCH MASS**

(PITCH MASS)

DRG. NO. **D060353**

REV. **F.**