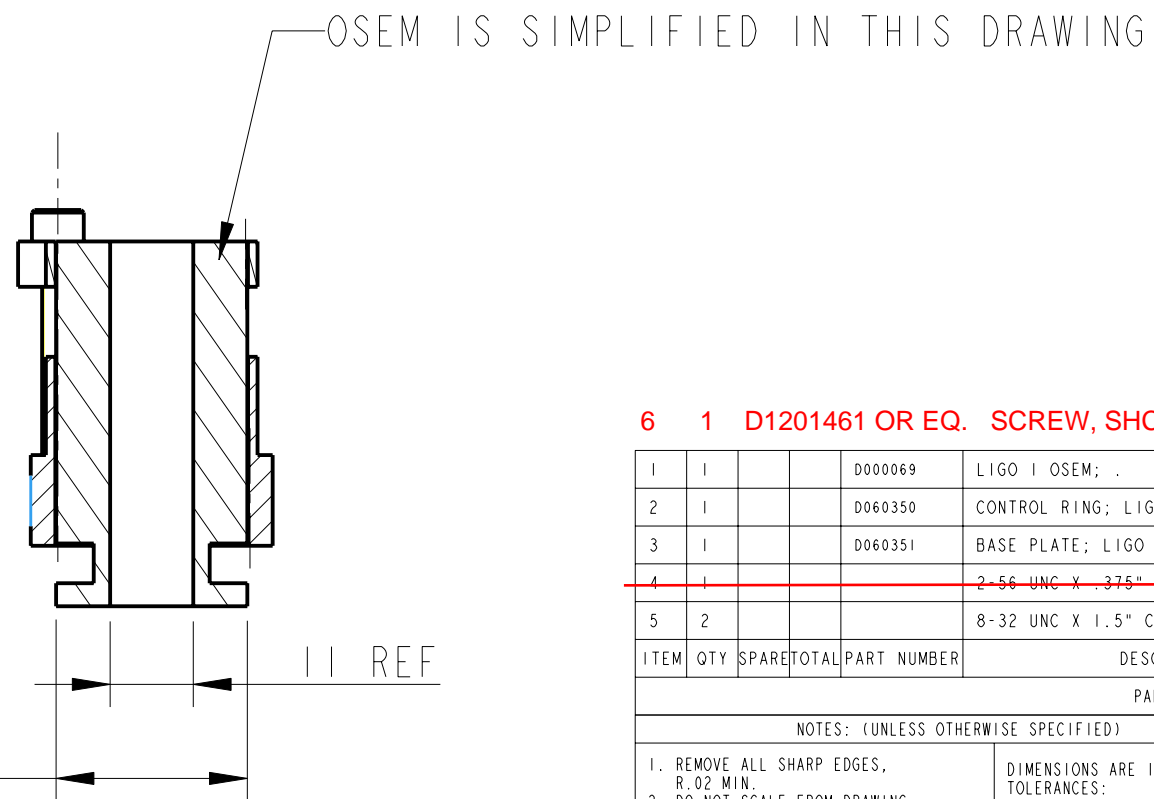
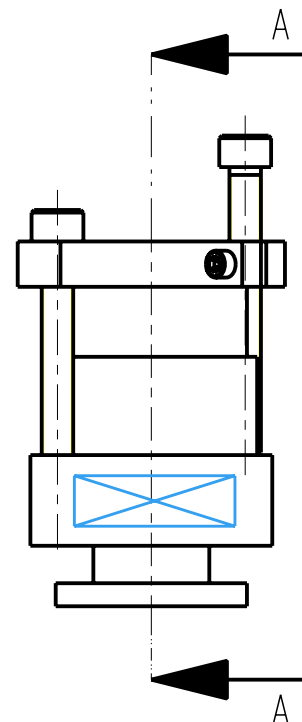
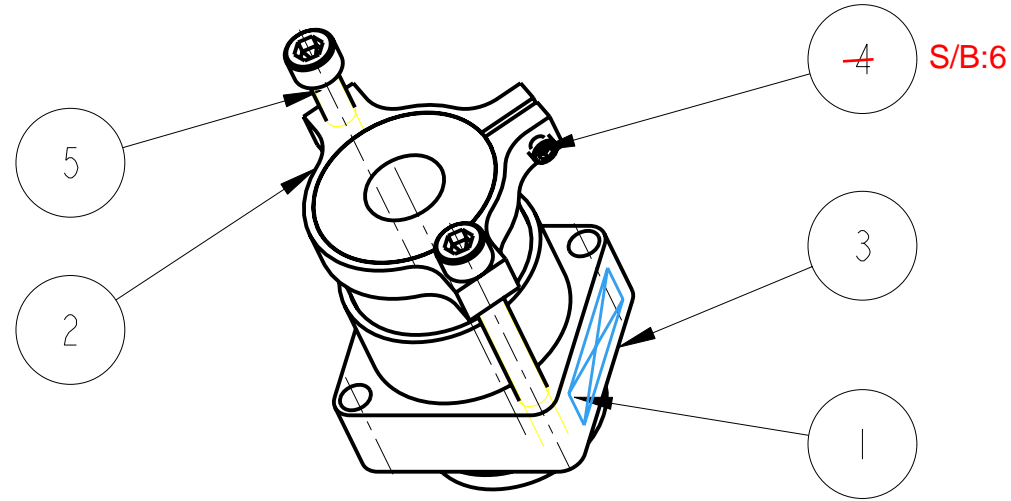
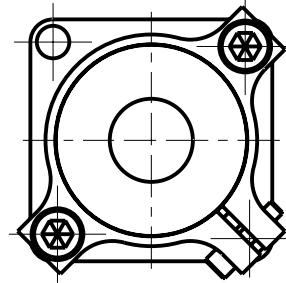


| REV. | DATE       | DCN #     | DRAWING TREE # |
|------|------------|-----------|----------------|
| A    | 15/OCT/06  | E060240   |                |
| B    | 20/DEC/07  | E060240-B |                |
| F    | 21/JULY/08 | E080370   |                |

v3 12 NOV 2012 E1201008-x0



6 1 D1201461 OR EQ. SCREW, SHC, #2-56 X .38 LG. PEEK

| ITEM | QTY | SPARE | TOTAL | PART NUMBER | DESCRIPTION                             | MATERIALS                |
|------|-----|-------|-------|-------------|---|--------------------------|
| 1    | 1   |       |       | D000069     | LIGO 1 OSEM; .                          | AS DRW: -----            |
| 2    | 1   |       |       | D060350     | CONTROL RING; LIGO 1 OSEM MOUNT         | AL ALLOY: 5083           |
| 3    | 1   |       |       | D060351     | BASE PLATE; LIGO 1 OSEM MOUNT           | AL ALLOY: 5083           |
| 4    | 1   |       |       |             | <del>2-56 UNC X .375" CAP HEAD; .</del> | <del>ST STEEL: 316</del> |
| 5    | 2   |       |       |             | 8-32 UNC X 1.5" CAP HEAD; .             | ST STEEL: 316            |

PARTS LIST

NOTES: (UNLESS OTHERWISE SPECIFIED)

- REMOVE ALL SHARP EDGES, R.02 MIN.
- DO NOT SCALE FROM DRAWING.
- ALL MACHINING FLUIDS SHALL BE WATER SOLUBLE AND FREE OF SULFUR, CHLORINE AND SILICONE, SUCH AS CINCINNATI MILACRON'S CIMTECH 410 (STAINLESS STEEL)
- SCRIBE, ENGRAVE OR STAMP DRAWING PART NUMBER ON NOTED SURFACE OF PART AND A THREE DIGIT SERIAL NUMBER. SERIAL NUMBERS START AT 001 FOR THE FIRST PART AND PROCEED CONSECUTIVELY. USE .07" HIGH CHARACTERS. EXAMPLE: D020188- 001. A VIBRATORY TOOL MAY BE USED.

DIMENSIONS ARE IN INCHES (mm)  
TOLERANCES:  
XX ±0.2 mm  
ANGULAR ± 0.5 °

MATERIAL: AS DRW

FINISH:  
√μm [μin] Ra = -----

|          | NAME     | DATE       |
|----------|----------|------------|
| DRAWN    | J O'DELL | 20/SEP/06  |
| CHECKED  | AJB      | 5MAY08     |
| APPROVED | AJB      | 18/JULY/08 |

SCALE: 1:1 PROJECTION: SHEET 1 OF 1

CALIFORNIA INSTITUTE OF TECHNOLOGY  
MASSACHUSETTS INSTITUTE OF TECHNOLOGY  
1GR, GLASGOW UNIVERSITY GEO 600 GROUP  
RUTHERFORD APPLETON LABORATORIES

SYSTEM **aLIGO**

SUB-SYSTEM **SUS**

NEXT ASSY **PENULTIMATE MASS**

PART NAME **LIGO 1 OSEM MOUNT**  
**(FOR PENRE MASS)** v3

DRG. NO. **D060349**