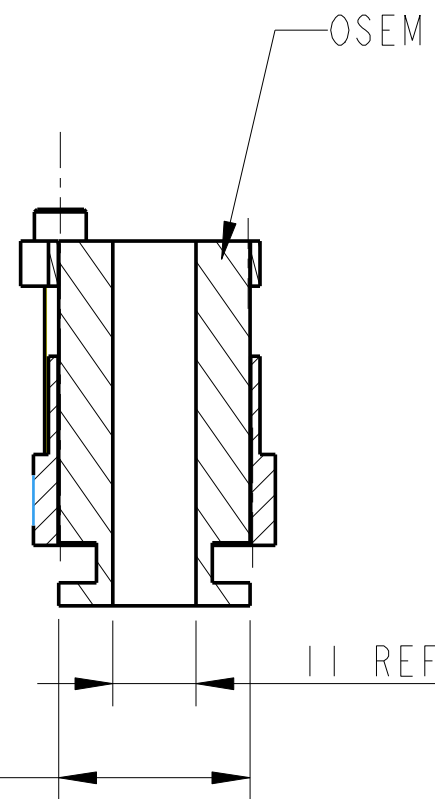
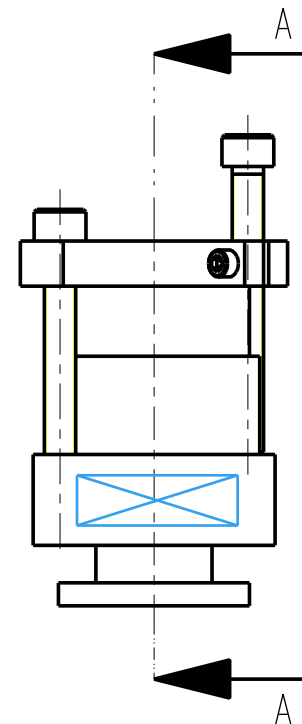
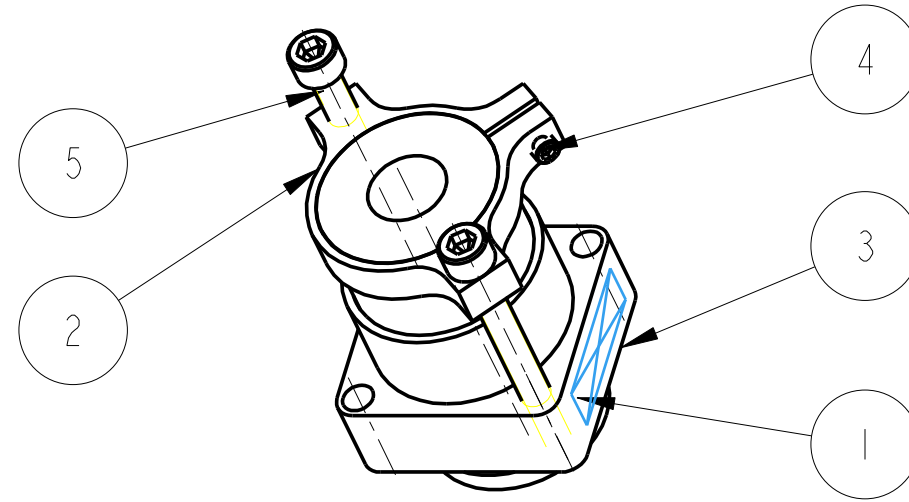
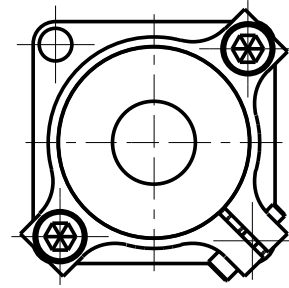


REV.	DATE	DCN #	DRAWING TREE #
A	15/OCT/06	E060240	.
B	20/DEC/07	E060240-B	.
F	21/JULY/08	E080370	.



OSEM IS SIMPLIFIED IN THIS DRAWING

25.4 REF (MAX)

SECTION A-A

ITEM	QTY	SPARE	TOTAL	PART NUMBER	DESCRIPTION	MATERIALS
1	1			D000069	LIGO 1 OSEM; .	-----; -----
2	1			D060350	CONTROL RING; LIGO 1 OSEM MOUNT	AL ALLOY: 5083
3	1			D060351	BASE PLATE; LIGO 1 OSEM MOUNT	AL ALLOY: 5083
4	1				2-56 UNC X .375" CAP HEAD; .	ST STEEL: 316
5	2				8-32 UNC X 1.5" CAP HEAD; .	ST STEEL: 316

PARTS LIST

NOTES: (UNLESS OTHERWISE SPECIFIED)

- REMOVE ALL SHARP EDGES, R.02 MIN.
- DO NOT SCALE FROM DRAWING.
- ALL MACHINING FLUIDS SHALL BE WATER SOLUBLE AND FREE OF SULFUR, CHLORINE AND SILICONE, SUCH AS CINCINNATI MILACRON'S CIMTECH 410 (STAINLESS STEEL)
- SCRIBE, ENGRAVE OR STAMP DRAWING PARTNUMBER ON NOTED SURFACE OF PART AND A THREE DIGIT SERIAL NUMBER. SERIAL NUMBERS START AT 001 FOR THE FIRST PART AND PROCEED CONSECUTIVELY. USE .07" HIGH CHARACTERS. EXAMPLE: D020188- 001. A VIBRATORY TOOL MAY BE USED.

DIMENSIONS ARE IN INCHES [mm]  
TOLERANCES:  
XX ±0.2 mm  
ANGULAR ± 0.5 °

MATERIAL: AS DRW  
---

FINISH:  
√μm [μin] Ra = -----

	NAME	DATE
DRAWN	J O'DELL	20/SEP/06
CHECKED	AJB	5MAY08
APPROVED	AJB	187JULY/08

SCALE 1:1 PROJECTION: SHEET 1 OF 1

CALIFORNIA INSTITUTE OF TECHNOLOGY  
 MASSACHUSETTS INSTITUTE OF TECHNOLOGY  
 1GR, GLASGOW UNIVERSITY GEO 600 GROUP  
 RUTHERFORD APPLETON LABORATORIES  
 SYSTEM **ADVANCED LIGO**  
 SUB-SYSTEM **SUS**  
 NEXT ASSY **N-PTYPE PENULTIMATE MASS**  
 PART NAME **LIGO 1 OSEM MOUNT**  
 (FOR PENRE MASS)  
 DRG. NO. **D060349** REV **F.**