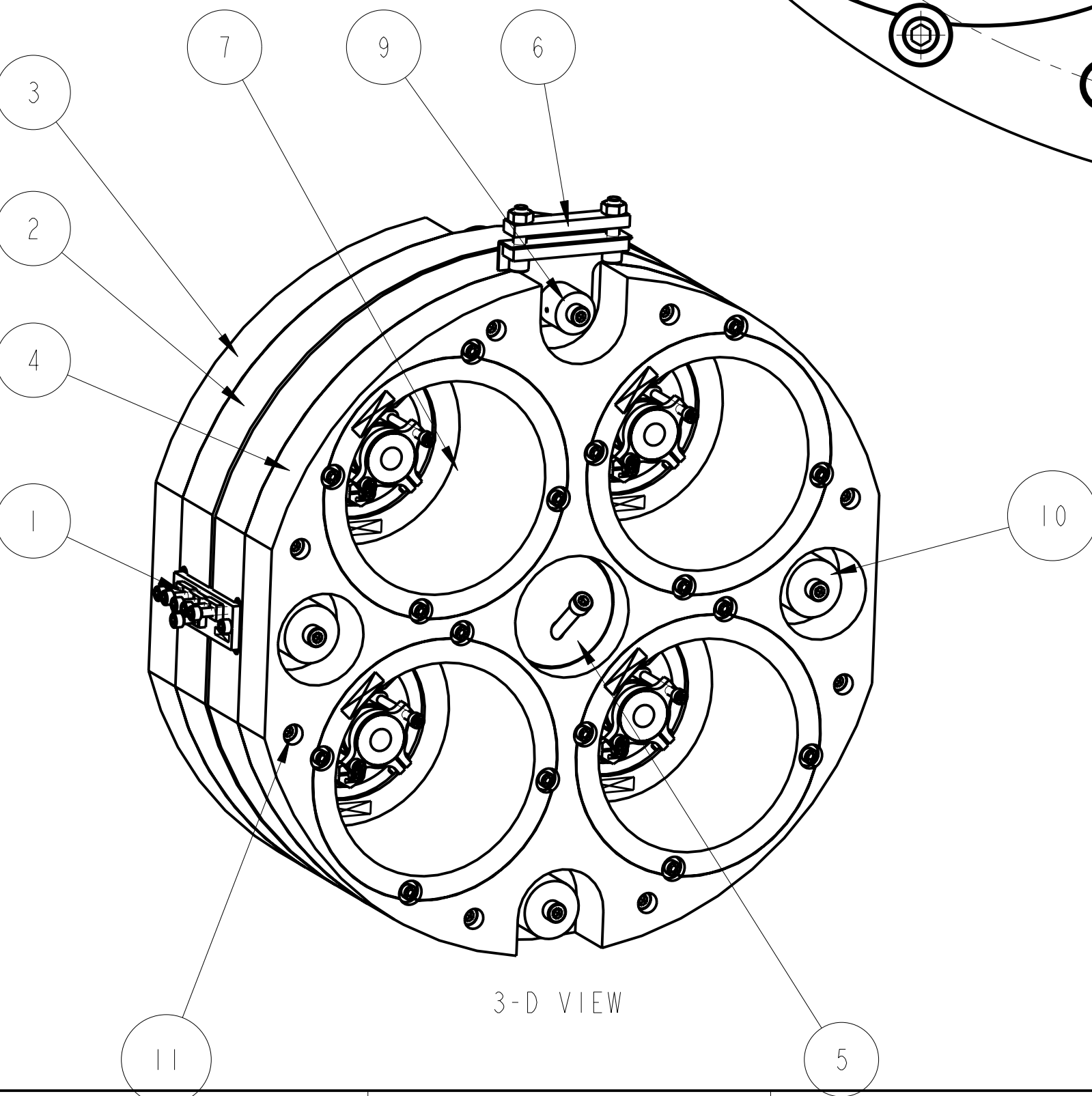
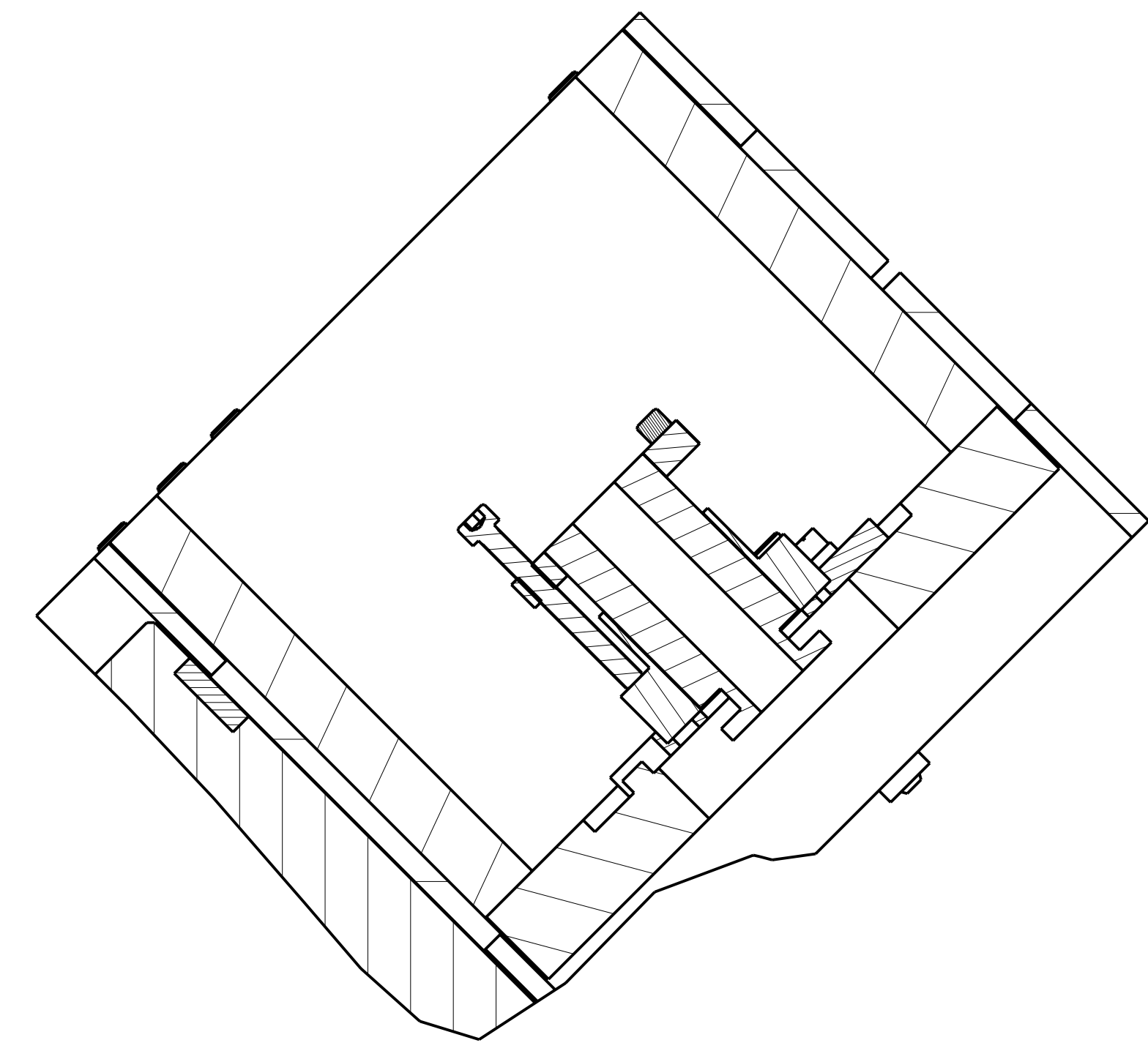
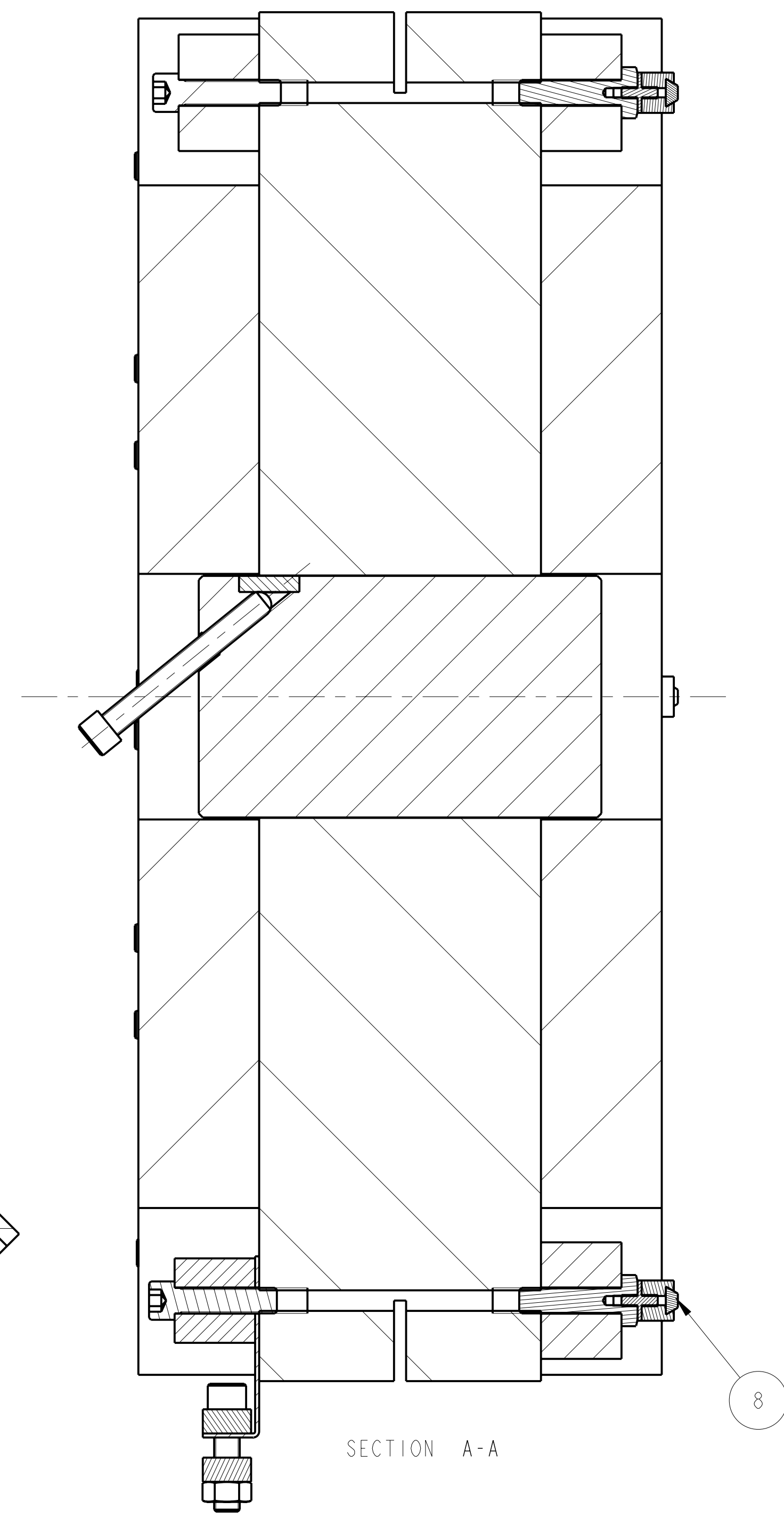
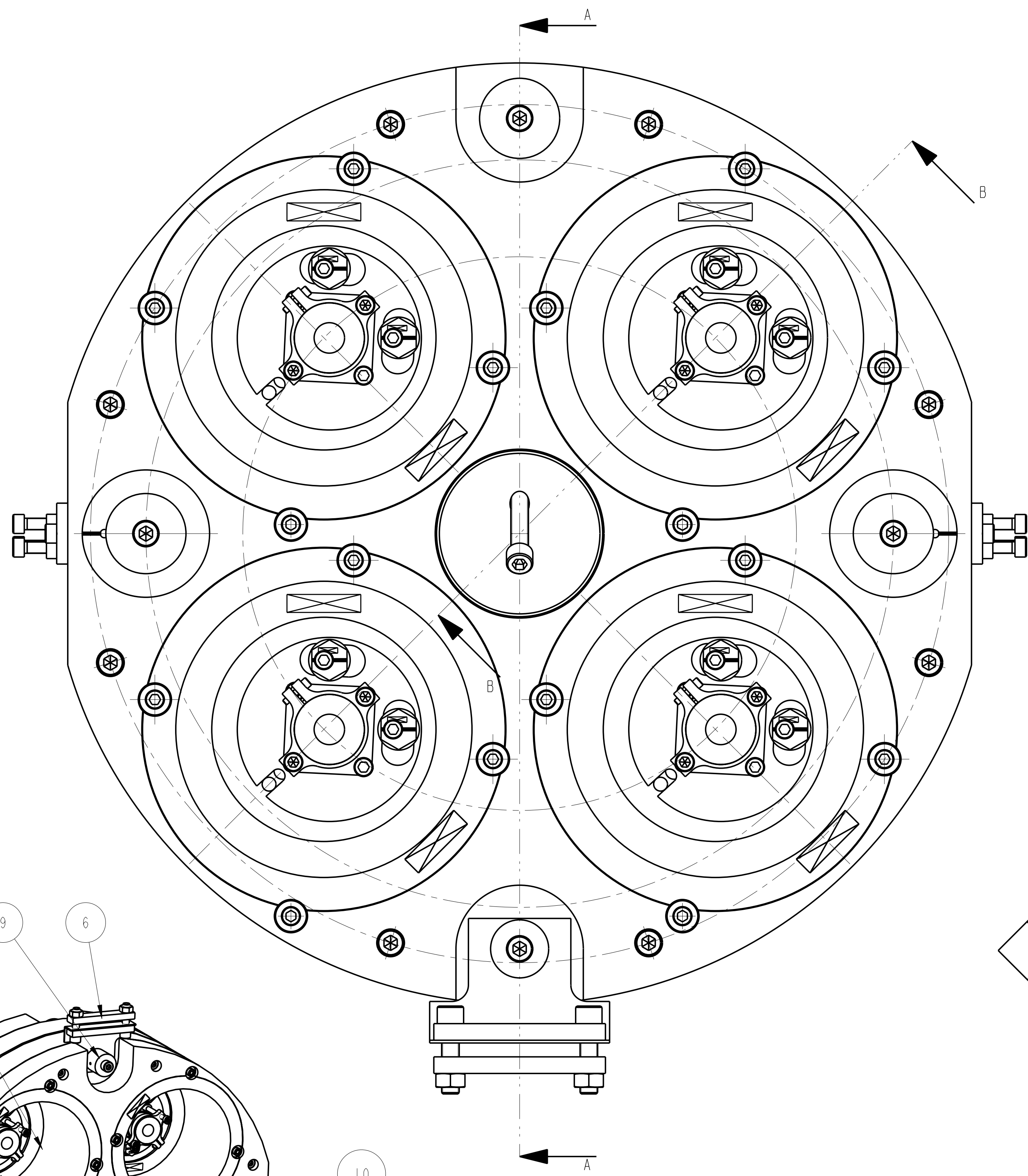


REV.	DATE	DCN #	DRAWING TREE #
A	15/OCT/06	E060240	
B	20/DEC/07	E060240-B	
E	21/JULY/08	E060370	



ITEM	QTY	SPARE/TOTAL	PART NUMBER	DESCRIPTION	MATERIALS
1	2		D060337	PENULTIMATE MASS WIRE CLAMP; . . .	AS DRW: AS DRAWN
2	1		D060342	CENTRAL MASS; . . .	ST STEEL: 304/316
3	1		D060343	FRONT PLATE; . . .	ST STEEL: 304/316
4	1		D060344	BACK PLATE; . . .	ST STEEL: 304/316
5	1		D060352	PITCH MASS; . . .	AS DRW: AS DRW
6	1		D070222	PEN RE MASS CABLE CLAMP; . . .	AS DRW:
7	4		D080166	ITM OSEM CAN; . . .	AS DRW:
8	4		D080240	PEN RE MASS BUMP STOP ASM; PENULTIMATE REACTION MASS	AS DRW:
9	1		D060359-050.0	ADDITIONAL MASS; . . .	ST STEEL: 316
10	7		D060359-100.0	ADDITIONAL MASS; . . .	ST STEEL: 316
11	20			1/4" 20 UNC X 1" CAP HEAD; . . .	
12	4			8-32 UNC X 0.625" CAP HEAD; . . .	
13	4			8-32 UNC WASHER; . . .	

NOTES: (UNLESS OTHERWISE SPECIFIED)

- REMOVE ALL SHARP EDGES.
- DO NOT SCALE FROM DRAWING.
- ALL MACHINING FLUIDS SHALL BE WATER SOLUBLE AND FREE OF SULFUR, CHLORINE AND SILICONE. SUCH AS CINCINNATI MILACRON'S CIMTECH 410 (STAINLESS STEEL).
- SCORE, ENGRAVE OR STAMP DRAWING PART NUMBER ON NOTED SURFACE OF PART AND A THREE DIGIT SERIAL NUMBER. SERIAL NUMBERS START AT 001 FOR THE FIRST PART AND PROCEED CONSECUTIVELY. USE 07* HIGH CHARACTERS. EXAMPLE: D060166-001 - A VIBRATOR TOOL MAY BE USED.

DIMENSIONS ARE IN mm (INCHES)
TOLERANCES:
X XX ± .13
ANGULAR ± .

MATERIAL: AS DRW

FINISH: CLEAN AND DEGREASED
Ra = 1.6

NAME	DATE	SIZE
DRAWN	1/WILMOT	30/06/09
CHECKED	J'OOD	30/JUN/09
APPROVED	J'OOD	30/JUN/09

CALIFORNIA INSTITUTE OF TECHNOLOGY
MASSACHUSETTS INSTITUTE OF TECHNOLOGY
RUTHERFORD APPLIION LABORATORIES

SYSTEM: **ADVANCED LIGO**
SUB-SYSTEM: **SUS**
NEXT ASSY: **THIS**
PART NAME: **PENULTIMATE REACTION MASS QUAD**
DRG. NO.: **D060341**
SCALE: 1:1 PROJECTION: **F**
SHEET 1 OF 1