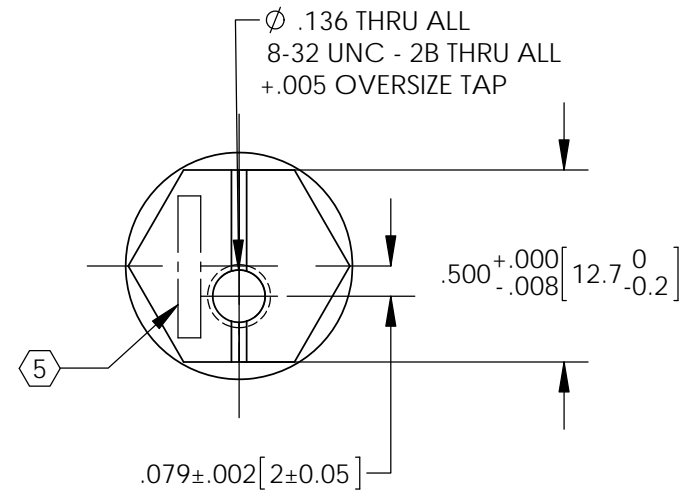
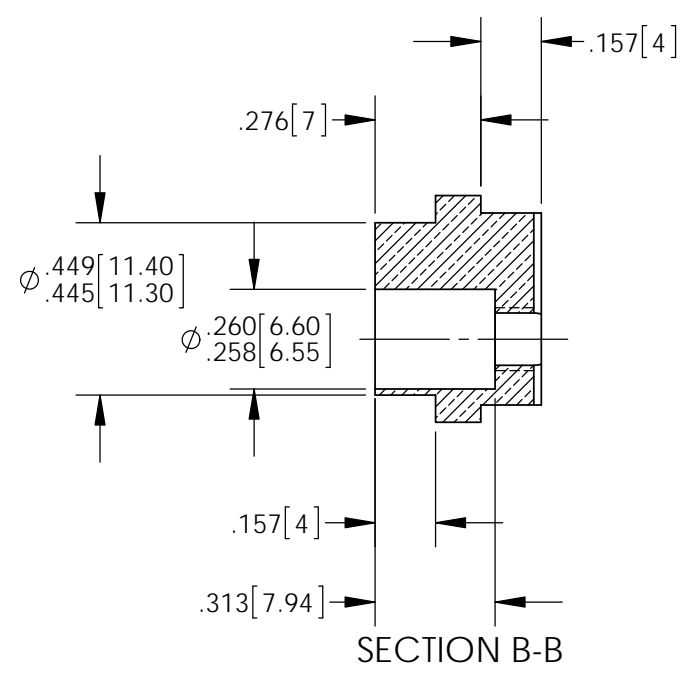
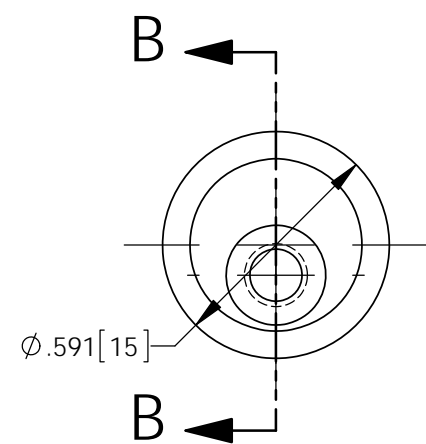
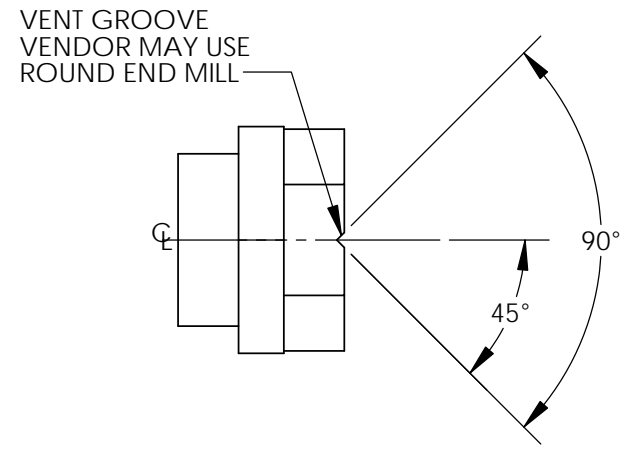


D060336_aLIGO, SUS, Penre MASS Quad N-Ptype, 2MM CAM, OSEM ADJUSTER, PART PDM REV: X-017, DRAWING PDM REV: X-005

NOTES CONTINUED:

- 5. SCRIBE, ENGRAVE, LASER MARK OR MECHANICALLY STAMP (NO DYES OR INKS) A UNIQUE THREE DIGIT SERIAL NUMBER & REVISION NUMBER ON EACH PART. SERIAL NUMBERS START AT 001 FOR THE FIRST ARTICLE AND PROCEED CONSECUTIVELY. BAG AND TAG PARTS WITH THEIR DRAWING PART NUMBER, REVISION, VARIANT OR "TYPE" (IF APPLICABLE), AND QUANTITY. IF PARTS ARE TOO SMALL TO SCRIBE, BAGGING AND TAGGING ALONE IS SUFFICIENT.
EXAMPLE (PART): 001-v1
EXAMPLE (TAG): DXXXXXX-VY, TYPE-XX, QTY: TBD
- 6. MACHINE ALL SURFACES TO REMOVE OXIDES AND MILL FINISH. USE OF ABRASIVE REMOVAL TECHNIQUES IS NOT ALLOWED. REFER TO LIGO-E0900364
- 7. ALL PARTS SHALL BE MANUFACTURED IN ACCORDANCE WITH LIGO SPECIFICATION E0900364.
- 8. ALL MATERIAL IS TO BE VIRGIN MATERIAL (i.e. NO WELD REPAIRS, PLUGS OR RECYCLED MATERIAL). NO REPAIRS SHALL BE MADE UNLESS APPROVED IN ADVANCE, AND IN WRITING, BY LIGO LABORATORY. REFER TO LIGO-E0900364.

REV.	DATE	DCN #	DRAWING TREE #
v3	21 Jan 2012	E1200066	E1200069
v4	26 Jan 2012	E1200057	E1200069



NOTES AND TOLERANCES: (UNLESS OTHERWISE SPECIFIED)	
DIMENSIONS ARE IN INCHES [MM]	1. INTERPRET DRAWING PER ASME Y14.5-1994. 2. REMOVE ALL SHARP EDGES, .005-.015, FOR MACHINED PARTS. ROUND ALL EDGES APPROXIMATELY R.02 FOR SHEET METAL PARTS. 3. DO NOT SCALE FROM DRAWINGS. 4. ALL MACHINING FLUIDS MUST BE FULLY SYNTHETIC, FULLY WATER SOLUBLE AND FREE OF SULFUR, SILICONE, AND CHLORINE.
TOLERANCES: .XX ± .01 .XXX ± .005	
ANGULAR ± .5°	
MATERIAL PHOSPHOR BRONZE P<or=0.35%, PB<or= 1%, Zn<or= 1%	FINISH 63 μinch

CALIFORNIA INSTITUTE OF TECHNOLOGY MASSACHUSETTS INSTITUTE OF TECHNOLOGY		PART NAME ALIGO, SUS, Penre MASS Quad N-Ptype, 2MM CAM, OSEM ADJUSTER	
SYSTEM ADVANCED LIGO	SUB-SYSTEM SUS	DESIGNER J.ODELL	28 Oct 2006
NEXT ASSY MULTIPLE	CHECKER MB	15 MAR 2010	28 OCT 2005
APPROVAL JOD	15 MAR 2010	SIZE B	DWG. NO. D060336
SCALE: 2:1		PROJECTION:	SHEET 1 OF 1