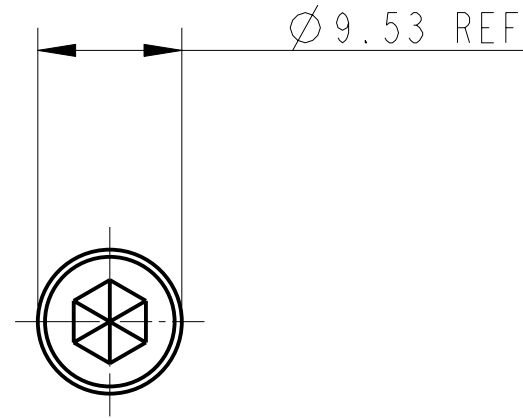
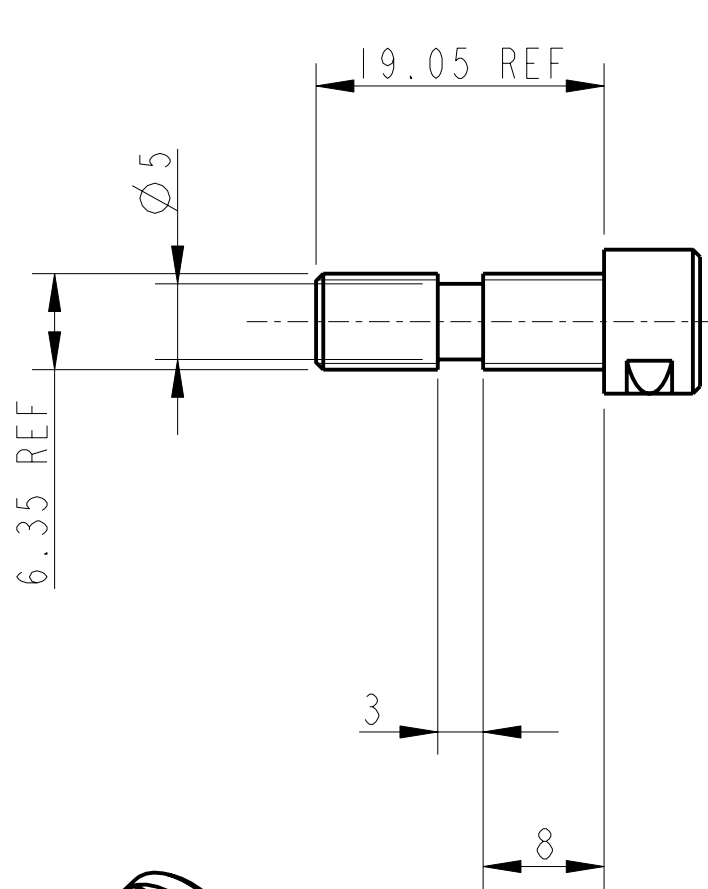
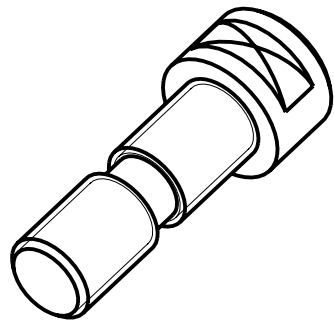


REV.	DATE	DCN #	DRAWING TREE #
A	18/OCT/06	E060247	.



MANUFACTURE FROM :-
 1/4"-20 UNC X 0.75 lg
 SOCKET HEAD CAP SCREW



3-D VIEW

NOTES: (UNLESS OTHERWISE SPECIFIED)			CALIFORNIA INSTITUTE OF TECHNOLOGY MASSACHUSETTS INSTITUTE OF TECHNOLOGY 1GR, GLASGOW UNIVERSITY GEO 600 GROUP RUTHERFORD APPLETON LABORATORIES		
1. REMOVE ALL SHARP EDGES, R.02 MIN. 2. DO NOT SCALE FROM DRAWING. 3. ALL MACHINING FLUIDS SHALL BE WATER SOLUBLE AND FREE OF SULFUR, CHLORINE AND SILICONE, SUCH AS CINCINNATI MILACRON'S CIMTECH 410 (STAINLESS STEEL) 4. SCRIBE, ENGRAVE OR STAMP DRAWING PARTNUMBER ON NOTED SURFACE OF PART AND A THREE DIGIT SERIAL NUMBER. SERIAL NUMBERS START AT 001 FOR THE FIRST PART AND PROCEED CONSECUTIVELY. USE .07" HIGH CHARACTERS. EXAMPLE: D020188- 001. A VIBRATORY TOOL MAY BE USED.	DIMENSIONS ARE IN mm [INCHES]		SYSTEM ADVANCED LIGO		
	X.XX ±0.2 mm ° ANGULAR ±0.25 °		SUB-SYSTEM SUS		
	MATERIAL: ST STEEL 303/304/316		NEXT ASSY TOP MASS QUAD N-P-TYPE		
	FINISH: CLEAN AND DEGREASED Ra = 1.6		PART NAME RECESSED 1/4" 20 UNC X 0.75" CAP HEAD		
	NAME	DATE	SIZE	DRG. NO.	REV
DRAWN	NJS/FEL	11/JULY/06	A	D060335	F.
CHECKED	IW	15/SEPT/06			
APPROVED	IW	15/SEPT/06			
SCALE 2:1			PROJECTION:	SHEET 1 OF	