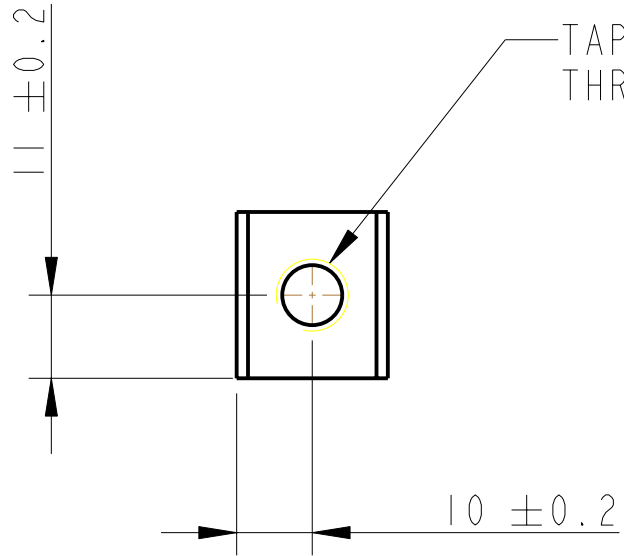
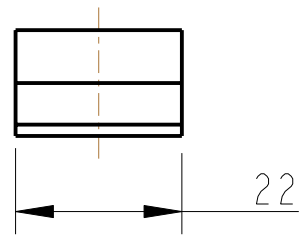
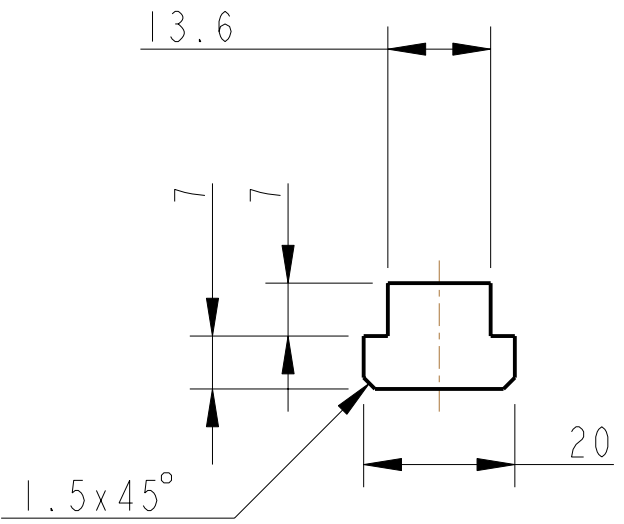


REV.	DATE	DCN #	DRAWING TREE #
A	13/OCT/06	E060238	
E	15/JULY/08	E080367	



TAP FOR 3/8-16 UNC HELICOIL
THRO' HELICOIL NOT TO BE FITTED

NOTES: (UNLESS OTHERWISE SPECIFIED)

- REMOVE ALL SHARP EDGES, R.02 MIN.
- DO NOT SCALE FROM DRAWING.
- ALL MACHINING FLUIDS SHALL BE WATER SOLUBLE AND FREE OF SULFUR, CHLORINE AND SILICONE, SUCH AS CINCINNATI MILACRON'S CIMTECH 410 (STAINLESS STEEL)
- SCRIBE, ENGRAVE OR STAMP DRAWING PARTNUMBER ON NOTED SURFACE OF PART AND A THREE DIGIT SERIAL NUMBER. SERIAL NUMBERS START AT 001 FOR THE FIRST PART AND PROCEED CONSECUTIVELY. USE .07" HIGH CHARACTERS. EXAMPLE: D020188- 001. A VIBRATORY TOOL MAY BE USED.

DIMENSIONS ARE IN mm [INCHES]
TOLERANCES:
X.XX ±0.2 mm
ANGULAR ±0.25 °

MATERIAL: ST STEEL 304/316

FINISH: CLEAN
√μm [μin] Ra = 1.6 OR STOCK

	NAME	DATE
DRAWN	I WILMUT	26/JUN/06
CHECKED	MB	15/MAR/10
APPROVED	JOD	15/MAR/10

CALIFORNIA INSTITUTE OF TECHNOLOGY
MASSACHUSETTS INSTITUTE OF TECHNOLOGY
IGR, GLASGOW UNIVERSITY GEO 600 GROUP
RUTHERFORD APPLETON LABORATORIES

SYSTEM **aLIGO**

SUB-SYSTEM **SUS**

NEXT ASSY **QUAD TOP STAGE**

PART NAME **3/8-16 UNC T NUT**
BASED ON WIXROYD 2418.W120

SIZE **A** DRG. NO. **D060328** REV **F.**

SCALE 1:1 PROJECTION: SHEET 1 OF 1