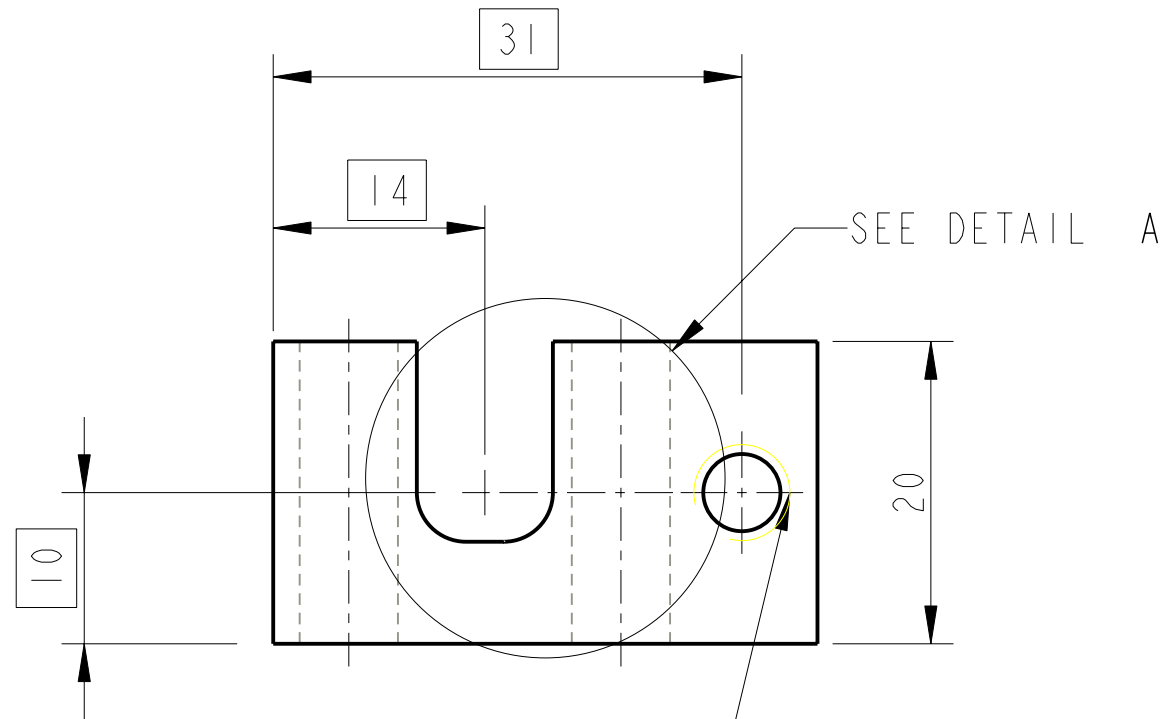
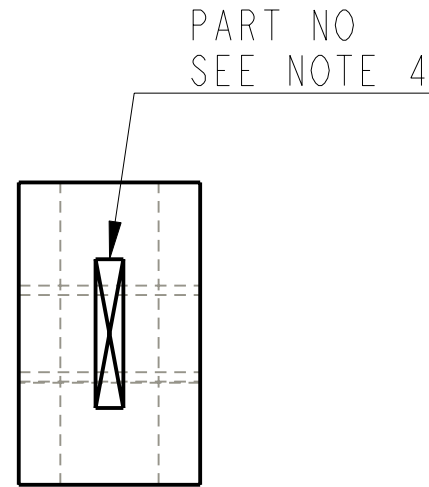


REV.	DATE	DCN #	DRAWING TREE #
A	13/OCT/06	E060238	
E	15/JULY/08	E080367	

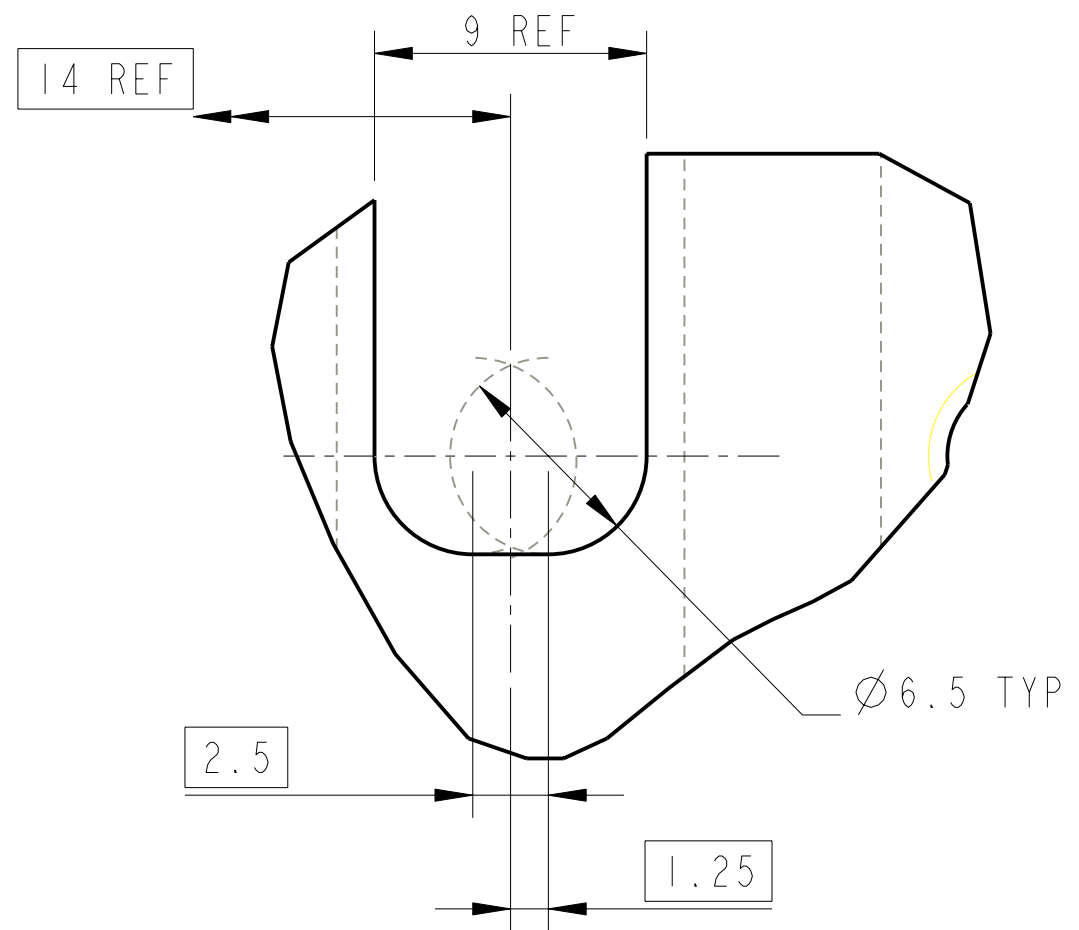
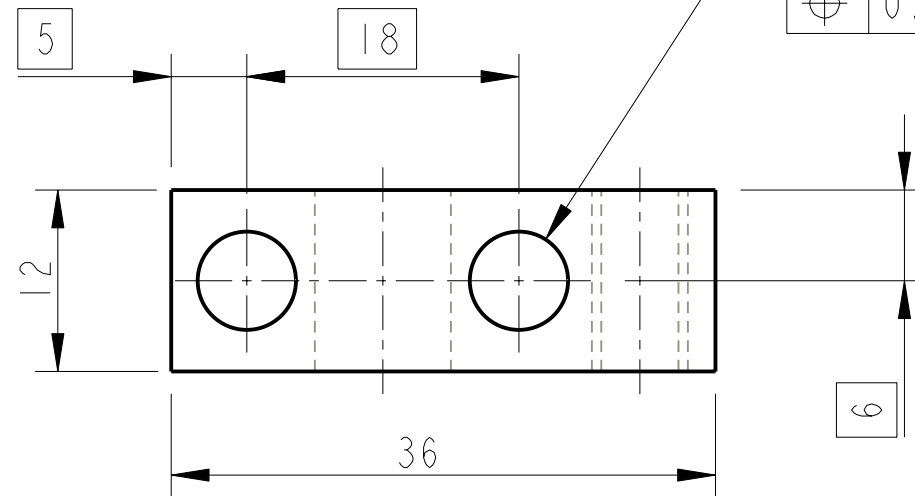


1 HOLE FOR HELICOIL 1/4-UNC THRU.  
HELICOIL NOT TO BE FITTED.

$\varnothing$  0.25

2 HOLES  $\varnothing$  6.5 THRU'

$\varnothing$  0.1



DETAIL A  
SCALE 4:1

$\varnothing$  0.25

NOTES: (UNLESS OTHERWISE SPECIFIED)

- REMOVE ALL SHARP EDGES, R.02 MIN.
- DO NOT SCALE FROM DRAWING.
- ALL MACHINING FLUIDS SHALL BE WATER SOLUBLE AND FREE OF SULFUR, CHLORINE AND SILICONE, SUCH AS CINCINNATI MILACRON'S CIMTECH 410 (STAINLESS STEEL)
- SCRIBE, ENGRAVE OR STAMP DRAWING PARTNUMBER ON NOTED SURFACE OF PART AND A THREE DIGIT SERIAL NUMBER. SERIAL NUMBERS START AT 001 FOR THE FIRST PART AND PROCEED CONSECUTIVELY. USE .07" HIGH CHARACTERS. EXAMPLE: D020188- 001. A VIBRATORY TOOL MAY BE USED.

DIMENSIONS ARE IN mm [INCHES]  
TOLERANCES:  
X.XX  $\pm$ 0.25 mm  
ANGULAR  $\pm$ 0.25°

MATERIAL: ST ST 304/316

FINISH: CLEAN AND DEGREASED  
 $\sqrt{\mu}$ m [ $\mu$ in] Ra = 1.6 [63]

NAME	DATE
DRAWN I WILMUT	3/OCT/06
CHECKED MB	15/MAR/10
APPROVED JOD	15/MAR/10

SYSTEM **aLIGO**

SUB-SYSTEM **SUS**

NEXT ASSY **QUAD TOP STAGE**

PART NAME **ROTATIONAL ADJUSTER  
STATIC HALF**

SIZE **B** DRG. NO. **D060325** REV **F.**

SCALE 2:1 PROJECTION: SHEET 1 OF 1