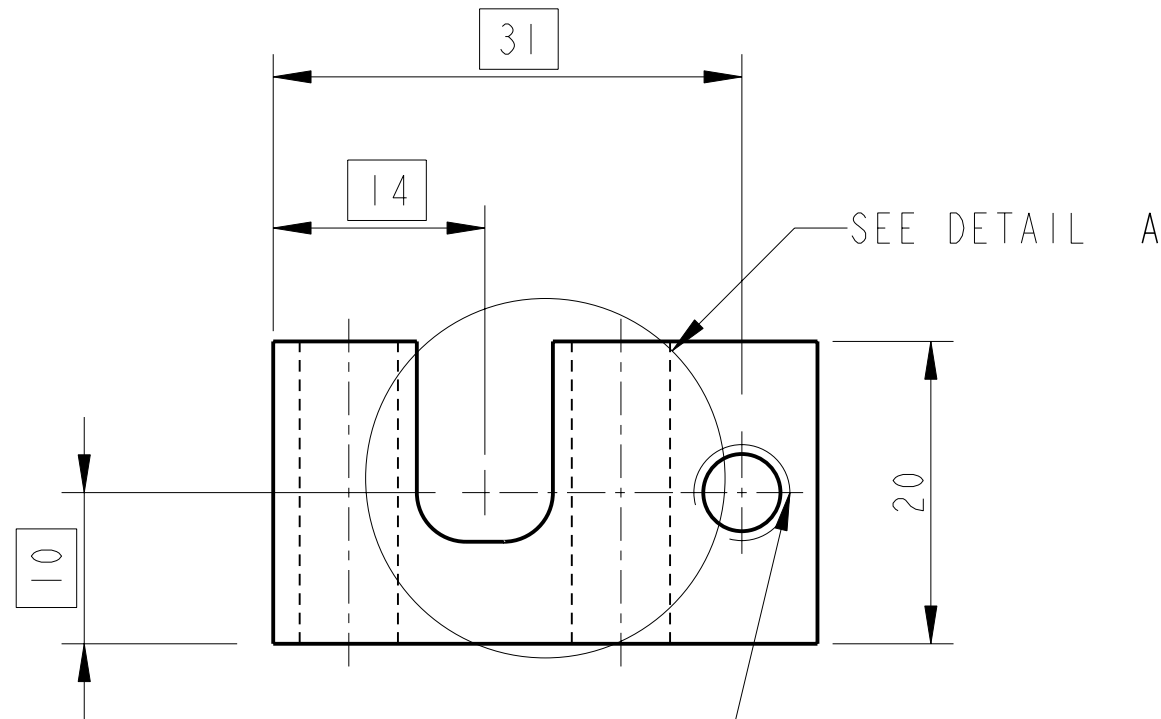
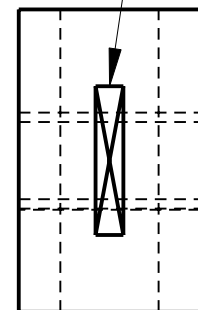


REV.	DATE	DCN #	DRAWING TREE #
A	13/OCT/06	E060238	
E	15/JULY/08	E080367	

PART NO
SEE NOTE 4

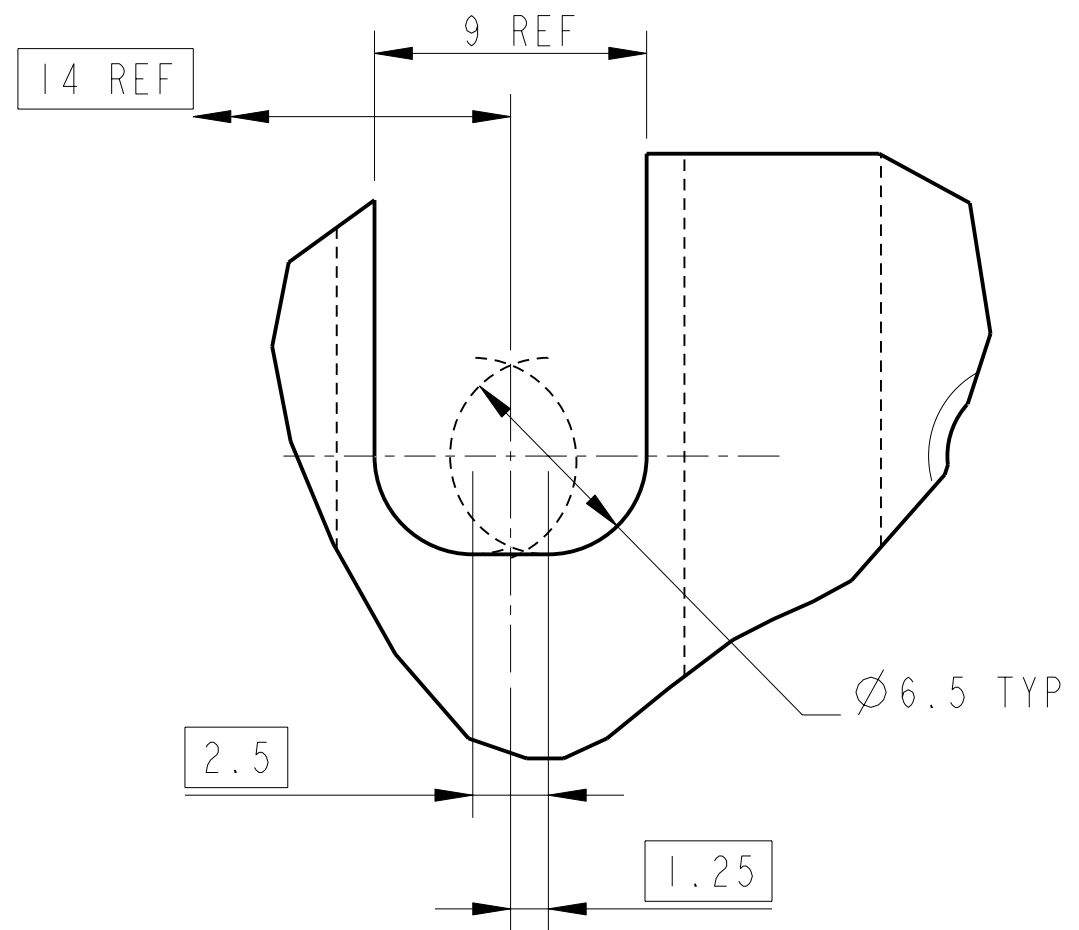
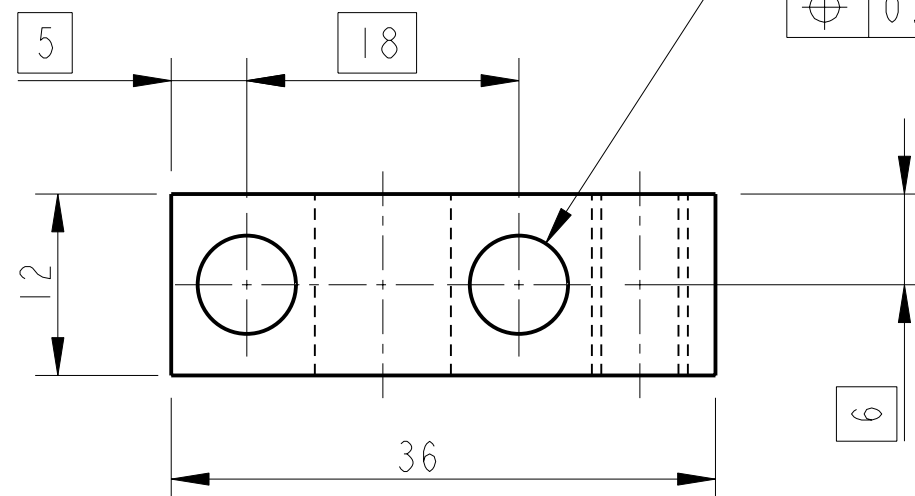


1 HOLE FOR HELICOIL 1/4-UNC THRU.
HELICOIL NOT TO BE FITTED.

\varnothing 0.25

2 HOLES \varnothing 6.5 THRU'

\varnothing 0.1



DETAIL A
SCALE 4:1

\varnothing 0.25

NOTES: (UNLESS OTHERWISE SPECIFIED)			CALIFORNIA INSTITUTE OF TECHNOLOGY MASSACHUSETTS INSTITUTE OF TECHNOLOGY IGR, GLASGOW UNIVERSITY GEO 600 GROUP RUTHERFORD APPLETON LABORATORIES									
1. REMOVE ALL SHARP EDGES, R.02 MIN. 2. DO NOT SCALE FROM DRAWING. 3. ALL MACHINING FLUIDS SHALL BE WATER SOLUBLE AND FREE OF SULFUR, CHLORINE AND SILICONE, SUCH AS CINCINNATI MILACRON'S CIMTECH 410 (STAINLESS STEEL) 4. SCRIBE, ENGRAVE OR STAMP DRAWING PART NUMBER ON NOTED SURFACE OF PART AND A THREE DIGIT SERIAL NUMBER. SERIAL NUMBERS START AT 001 FOR THE FIRST PART AND PROCEED CONSECUTIVELY. USE .07" HIGH CHARACTERS. EXAMPLE: D020188- 001. A VIBRATORY TOOL MAY BE USED.			DIMENSIONS ARE IN mm [INCHES] TOLERANCES: X.XX ±0.25 mm ° ANGULAR ±0.25 °									
MATERIAL: ST ST 304/316			SYSTEM ADVANCED LIGO									
FINISH: CLEAN AND DEGREASED $\sqrt{\mu m}$ [μin] Ra = 1.6 [63]			SUB-SYSTEM SUS									
<table border="1"> <thead> <tr> <th>NAME</th> <th>DATE</th> </tr> </thead> <tbody> <tr> <td>DRAWN I WILMUT</td> <td>3/OCT/06</td> </tr> <tr> <td>CHECKED AJB</td> <td>5MAY08</td> </tr> <tr> <td>APPROVED AJB</td> <td>15/JULY/08</td> </tr> </tbody> </table>			NAME	DATE	DRAWN I WILMUT	3/OCT/06	CHECKED AJB	5MAY08	APPROVED AJB	15/JULY/08	NEXT ASSY TOP STAGE N-P TYPE	
NAME	DATE											
DRAWN I WILMUT	3/OCT/06											
CHECKED AJB	5MAY08											
APPROVED AJB	15/JULY/08											
			PART NAME ROTATIONAL ADJUSTER STATIC HALF									
SIZE B DRG. NO. D060325			SHEET 1 OF 1									
SCALE 2:1			PROJECTION:									