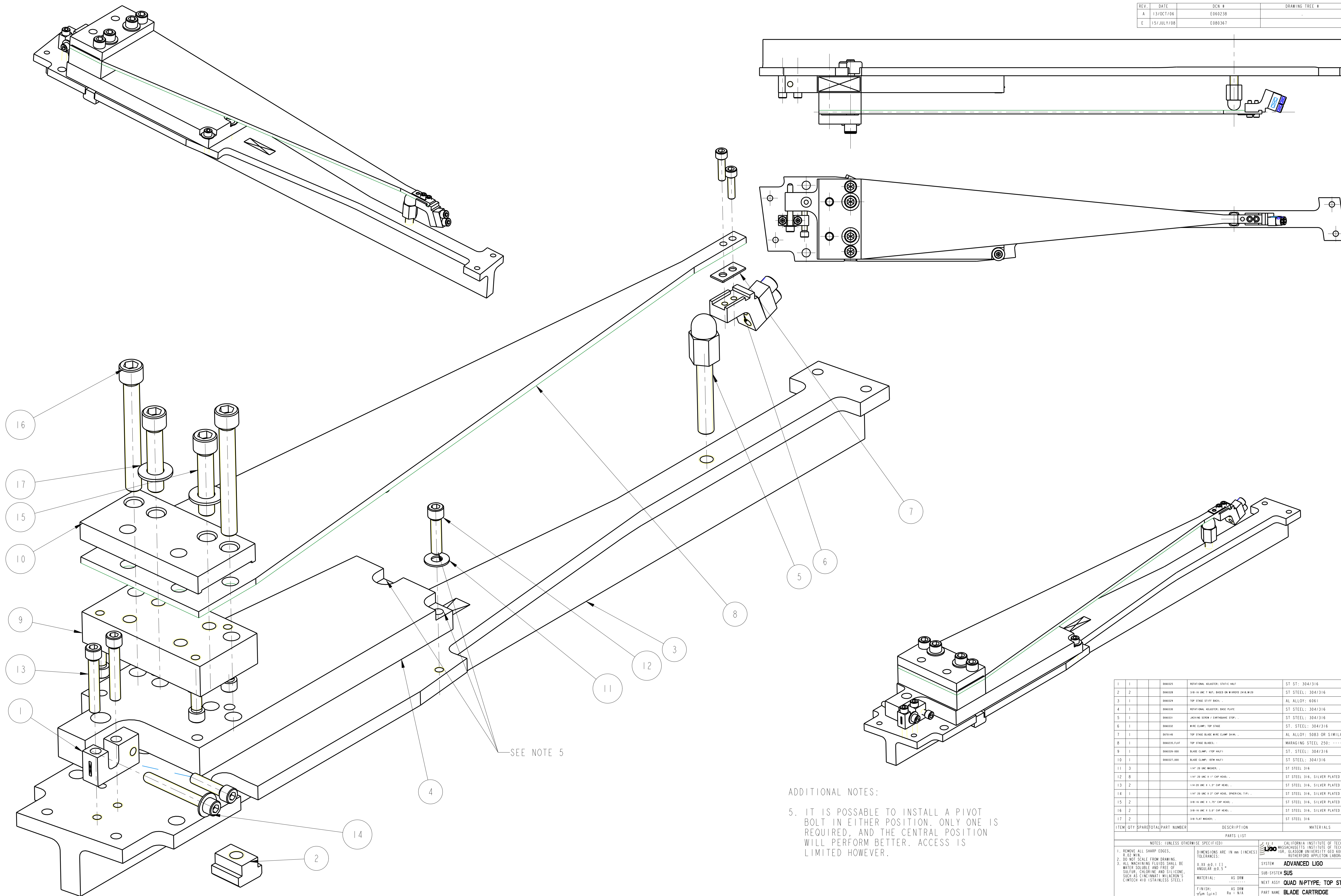


REV.	DATE	DCN #	DRAWING TREE #
A	13/OCT/06	E060238	
E	15/JULY/08	E080367	



ADDITIONAL NOTES:  
 5. IT IS POSSIBLE TO INSTALL A PIVOT BOLT IN EITHER POSITION. ONLY ONE IS REQUIRED, AND THE CENTRAL POSITION WILL PERFORM BETTER. ACCESS IS LIMITED HOWEVER.

ITEM	QTY	SPARE	TOTAL	PART NUMBER	DESCRIPTION	MATERIALS
1	1			0040305	ROTATIONAL ADJUSTER: STATIC HALF	ST ST: 304/316
2	2			0040329	3/8"-16 UNC 6 NUTS: BASED ON WIREWIND DATA W/20	ST STEEL: 304/316
3	1			0040329	TOP STAGE LEFT BACK	AL ALLOY: 6061
4	1			0040330	ROTATIONAL ADJUSTER: BASE PLATE	ST STEEL: 304/316
5	1			0040331	LOCKING SCREW: 2 (ANTICOUNTER STOP)	ST STEEL: 304/316
6	1			0040332	WIRE CLAMP: TOP STAGE	ST STEEL: 304/316
7	1			0070140	TOP STAGE BLADE WIRE CLAMP SPRING	AL ALLOY: 5083 OR SIMILAR
8	1			0040329-FLAT	TOP STAGE BLADES: -	MARAGING STEEL 250: -
9	1			0040329-400	RELEASE CLAMP: (TOP HALF)	ST STEEL: 304/316
10	1			0040327-1000	RELEASE CLAMP: (BTM HALF)	ST STEEL: 304/316
11	3			1/4" 20 UNC WASHER		ST STEEL 316
12	8			1/4" 20 UNC 6 1/2" CAP HEAD		ST STEEL 316, SILVER PLATED
13	2			1/4" 20 UNC 6 1/2" CAP HEAD		ST STEEL 316, SILVER PLATED
14	1			1/4" 20 UNC 8 2" CAP HEAD, SPHERICAL TIPP		ST STEEL 316, SILVER PLATED
15	2			3/8"-16 UNC 6 1/2" TOP CAP HEAD		ST STEEL 316, SILVER PLATED
16	2			3/8"-16 UNC 6 1/2" CAP HEAD		ST STEEL 316, SILVER PLATED
17	2			3/8" FLAT WASHER		ST STEEL 316

NOTES: (UNLESS OTHERWISE SPECIFIED)  
 1. REMOVE ALL SHARP EDGES.  
 2. DO NOT SCALE FROM DRAWING.  
 3. ALL MACHINING FLUIDS SHALL BE WATER SOLUBLE AND FREE OF SULFUR, CHLORINE AND SILICONE. SUCH AS CIMLINE/INTRA WILCOX/5 CIMTECH 410 (STAINLESS STEEL)

DIMENSIONS ARE IN mm (INCHES)  
 TOLERANCES:  
 X .XX ±0.1 ( )  
 ANGULAR ±0.5°

MATERIAL: AS DRW  
 FINISH: AS DRW  
 R<sub>a</sub> = N/A

NAME: DATE: SITE:  
 DRAWN: WILMOT 5/30/07  
 CHECKED: AJB 5/30/07  
 APPROVED: AJB 15/JULY/08

CALIFORNIA INSTITUTE OF TECHNOLOGY  
 MASSACHUSETTS INSTITUTE OF TECHNOLOGY  
 DR. GLASSBORO UNIVERSITY GEO 600 GROUP  
 RUTHERFORD APPLICON LABORATORIES

SYSTEM: ADVANCED LIGO  
 SUB-SYSTEM: SUS  
 NEXT ASSY: QUAD N-PTYPE; TOP STAGE  
 PART NAME: BLADE CARTRIDGE

DRG. NO.: D060324  
 SCALE: 1:21 PROJECTION: 4th ANGLE SHEET 1 OF 1