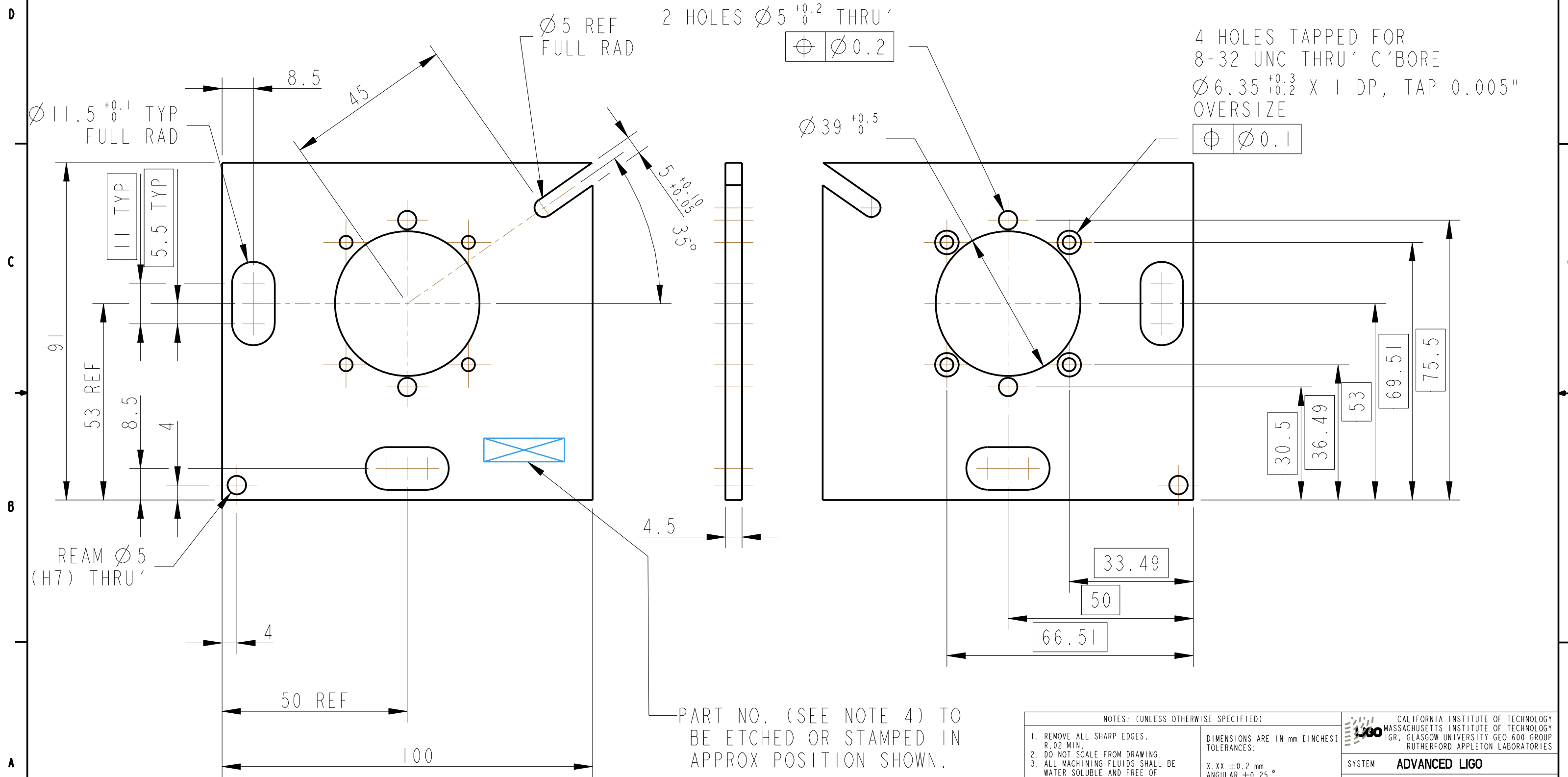


REV.	DATE	DCN #	DRAWING TREE #
A	13/OCT/06	E060239	.
B	19/DEC/07	E060239-B	.
E	16/JULY/08	E080369	.



4 HOLES TAPPED FOR  
8-32 UNC THRU' C'BORE  
Ø6.35 <sup>+0.3</sup>/<sub>0</sub> X 1 DP, TAP 0.005"  
OVERSIZE

2 HOLES Ø5 <sup>+0.2</sup>/<sub>0</sub> THRU'

Ø0.1

PART NO. (SEE NOTE 4) TO  
BE ETCHED OR STAMPED IN  
APPROX POSITION SHOWN.

NOTES: (UNLESS OTHERWISE SPECIFIED)

- REMOVE ALL SHARP EDGES, R.02 MIN.
- DO NOT SCALE FROM DRAWING.
- ALL MACHINING FLUIDS SHALL BE WATER SOLUBLE AND FREE OF SULFUR, CHLORINE AND SILICONE, SUCH AS CINCINNATI MILACRON'S CIMTECH 410 (STAINLESS STEEL)
- SCRIBE, ENGRAVE OR STAMP DRAWING PARTNUMBER ON NOTED SURFACE OF PART AND A THREE DIGIT SERIAL NUMBER. SERIAL NUMBERS START AT 001 FOR THE FIRST PART AND PROCEED CONSECUTIVELY. USE .07" HIGH CHARACTERS. EXAMPLE: D020188- 001. A VIBRATORY TOOL MAY BE USED.

DIMENSIONS ARE IN mm (INCHES)	
TOLERANCES:	
X.XX ±0.2 mm	
ANGULAR ±0.25 °	
MATERIAL: AL ALLOY 5083 H4	
FINISH: CLEAN AND DEGREASED	
√µm [µin] Ra = 1.6	
NAME	DATE
DRAWN I WILMUT	03/10/06
CHECKED AJB	5MAY08
APPROVED AJB	16JULY08

CALIFORNIA INSTITUTE OF TECHNOLOGY MASSACHUSETTS INSTITUTE OF TECHNOLOGY 1GR, GLASGOW UNIVERSITY GEO 600 GROUP RUTHERFORD APPLETON LABORATORIES	
SYSTEM	ADVANCED LIGO
SUB-SYSTEM	SUS
NEXT ASSY	QUAD N-PTYPE TABLECLOTH
PART NAME	TRANSVERSE OSEM POSITION ADJUSTMENT PLATE
STZE	DRG. NO. D060323
REV	E.
SCALE 1:1 PROJECTION:	
SHEET 1 OF 1	