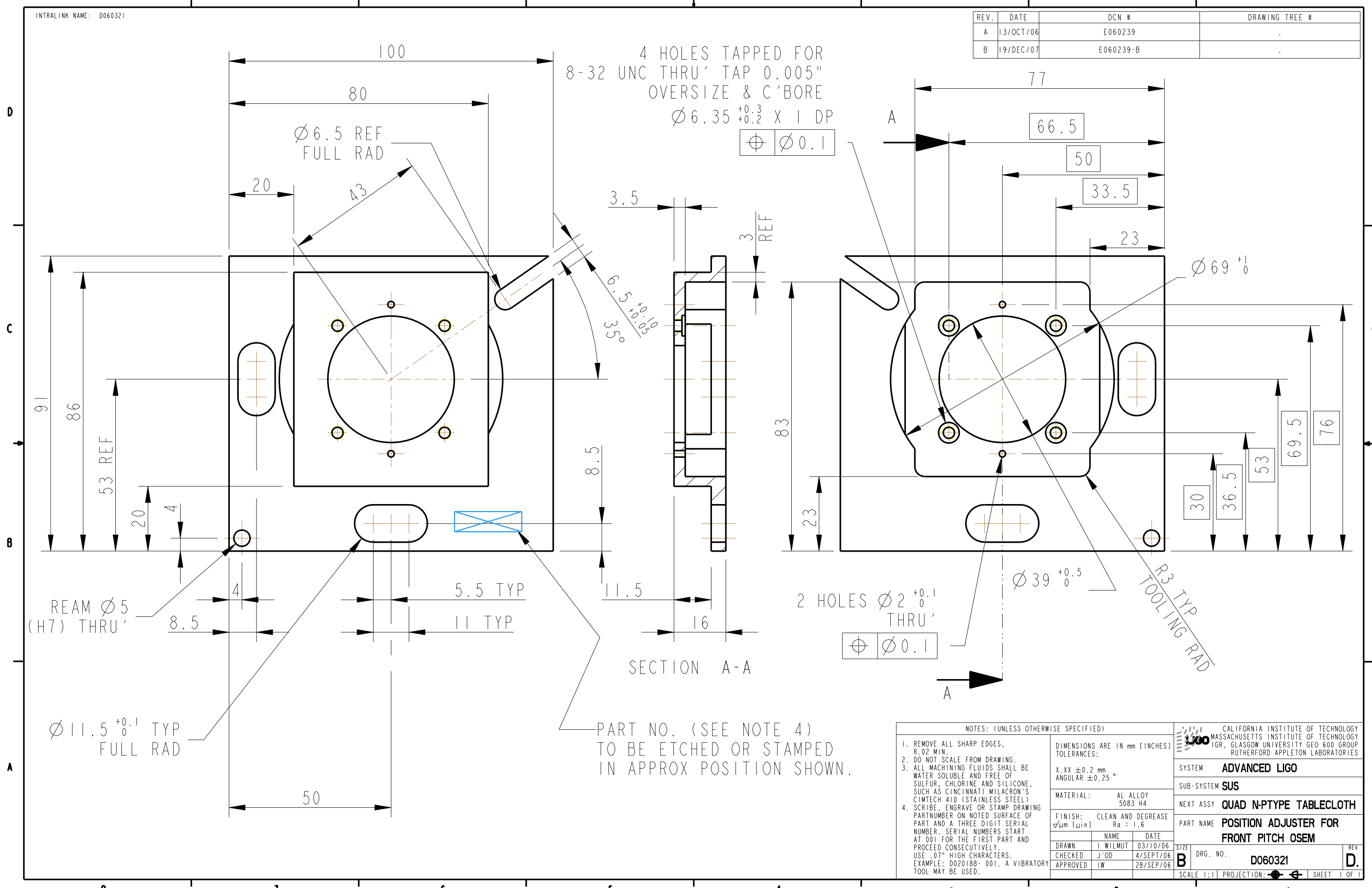
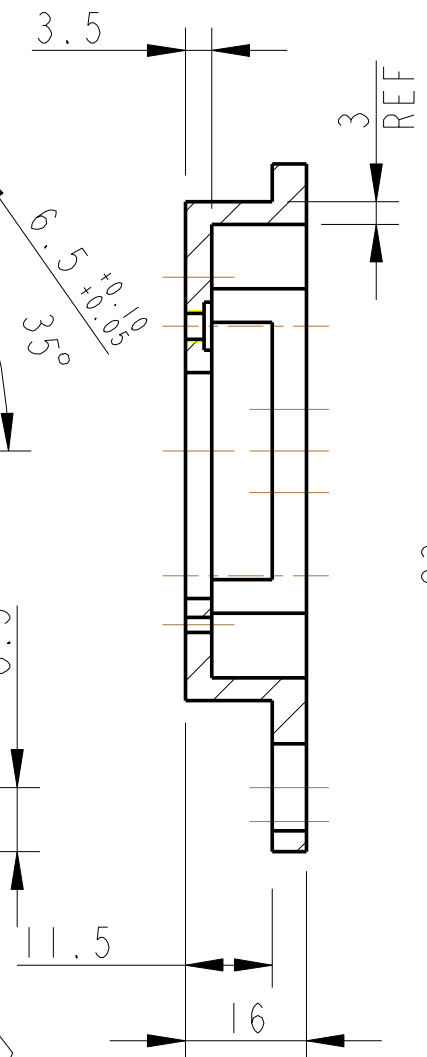


| REV. | DATE      | DCN #     | DRAWING TREE # |
|------|-----------|-----------|----------------|
| A    | 13/OCT/06 | E060239   |                |
| B    | 19/DEC/07 | E060239-B |                |



4 HOLES TAPPED FOR  
8-32 UNC THRU' TAP 0.005"  
OVERSIZE & C'BORE  
 $\varnothing 6.35^{+0.3}$  X 1 DP

$\varnothing 0.1$



SECTION A-A

2 HOLES  $\varnothing 2^{+0.1}$   
THRU'

$\varnothing 0.1$

PART NO. (SEE NOTE 4)  
TO BE ETCHED OR STAMPED  
IN APPROX POSITION SHOWN.

NOTES: (UNLESS OTHERWISE SPECIFIED)

- REMOVE ALL SHARP EDGES, R.02 MIN.
- DO NOT SCALE FROM DRAWING.
- ALL MACHINING FLUIDS SHALL BE WATER SOLUBLE AND FREE OF SULFUR, CHLORINE AND SILICONE, SUCH AS CINCINNATI MILACRON'S CIMTECH 410 (STAINLESS STEEL)
- SCRIBE, ENGRAVE OR STAMP DRAWING PART NUMBER ON NOTED SURFACE OF PART AND A THREE DIGIT SERIAL NUMBER. SERIAL NUMBERS START AT 001 FOR THE FIRST PART AND PROCEED CONSECUTIVELY. USE .07" HIGH CHARACTERS. EXAMPLE: D020188-001. A VIBRATORY TOOL MAY BE USED.

|                                      |           |
|--------------------------------------|-----------|
| DIMENSIONS ARE IN mm [INCHES]        |           |
| TOLERANCES:                          |           |
| X.XX $\pm 0.2$ mm                    |           |
| ANGULAR $\pm 0.25^\circ$             |           |
| MATERIAL: AL ALLOY 5083 H4           |           |
| FINISH: CLEAN AND DEGREASE           |           |
| $\sqrt{\mu m}$ [ $\mu in$ ] Ra = 1.6 |           |
| NAME                                 | DATE      |
| DRAWN I WILMUT                       | 03/10/06  |
| CHECKED J'OD                         | 4/SEPT/06 |
| APPROVED IW                          | 28/SEP/06 |

|  |  |
|--|--|
| CALIFORNIA INSTITUTE OF TECHNOLOGY<br>MASSACHUSETTS INSTITUTE OF TECHNOLOGY<br>1GR, GLASGOW UNIVERSITY GEO 600 GROUP<br>RUTHERFORD APPLETON LABORATORIES |  |
| SYSTEM   | ADVANCED LIGO                          |
| SUB-SYSTEM   | SUS                                    |
| NEXT ASSY  | QUAD N-PTYPE TABLECLOTH                |
| PART NAME  | POSITION ADJUSTER FOR FRONT PITCH OSEM |
| SIZE   | B                                      |
| DRG. NO.   | D060321                                |
| SCALE  | 1:1                                    |
| PROJECTION   | 1st Angle                              |
| SHEET  | 1 OF 1                                 |