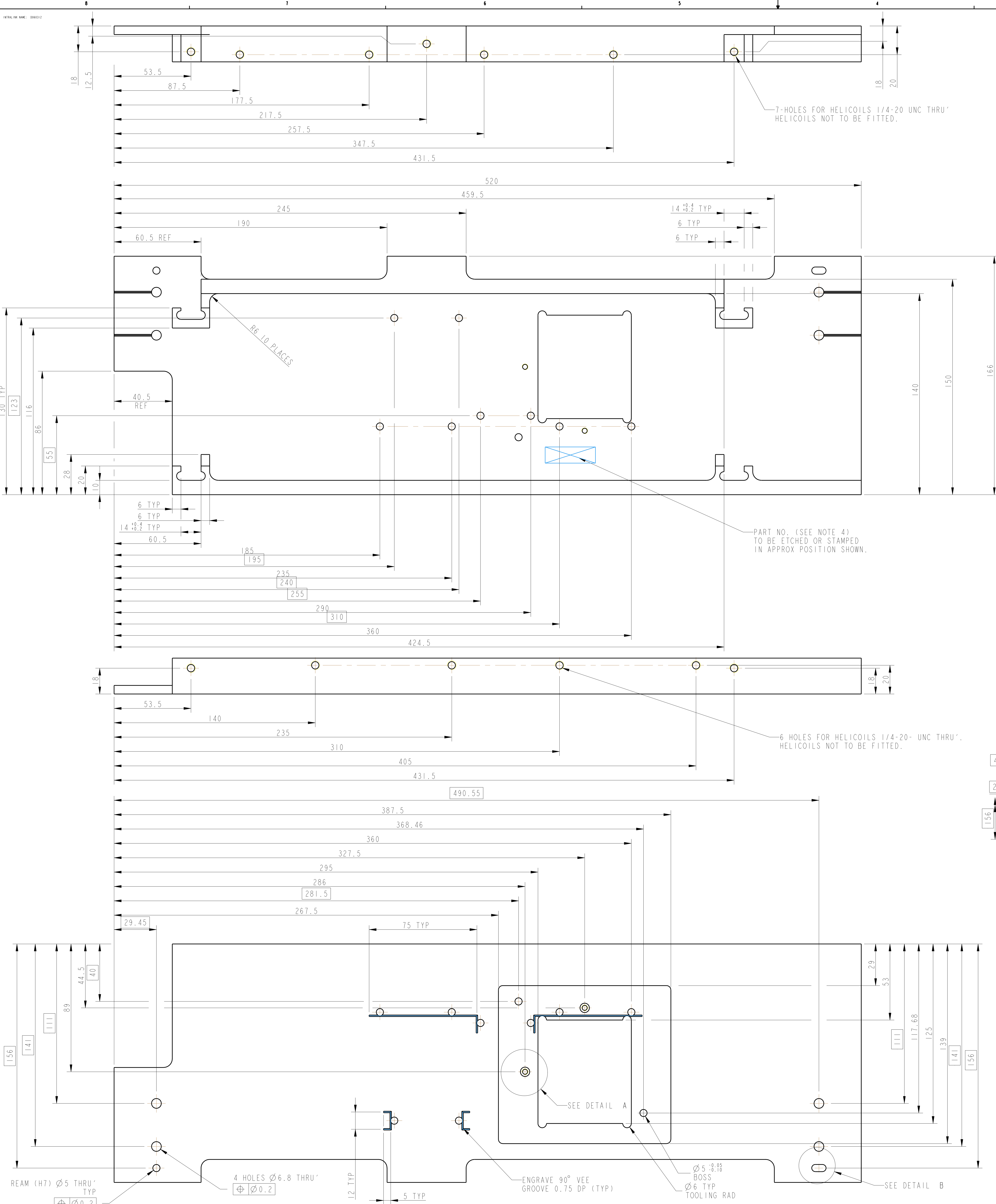


REV.	DATE	DRN #	DRAWING TREE #
A	13/OCT/16	ED6239	
B	19/OCT/17	ED6239 B	
D	16/JULY/20	ED6239 D	



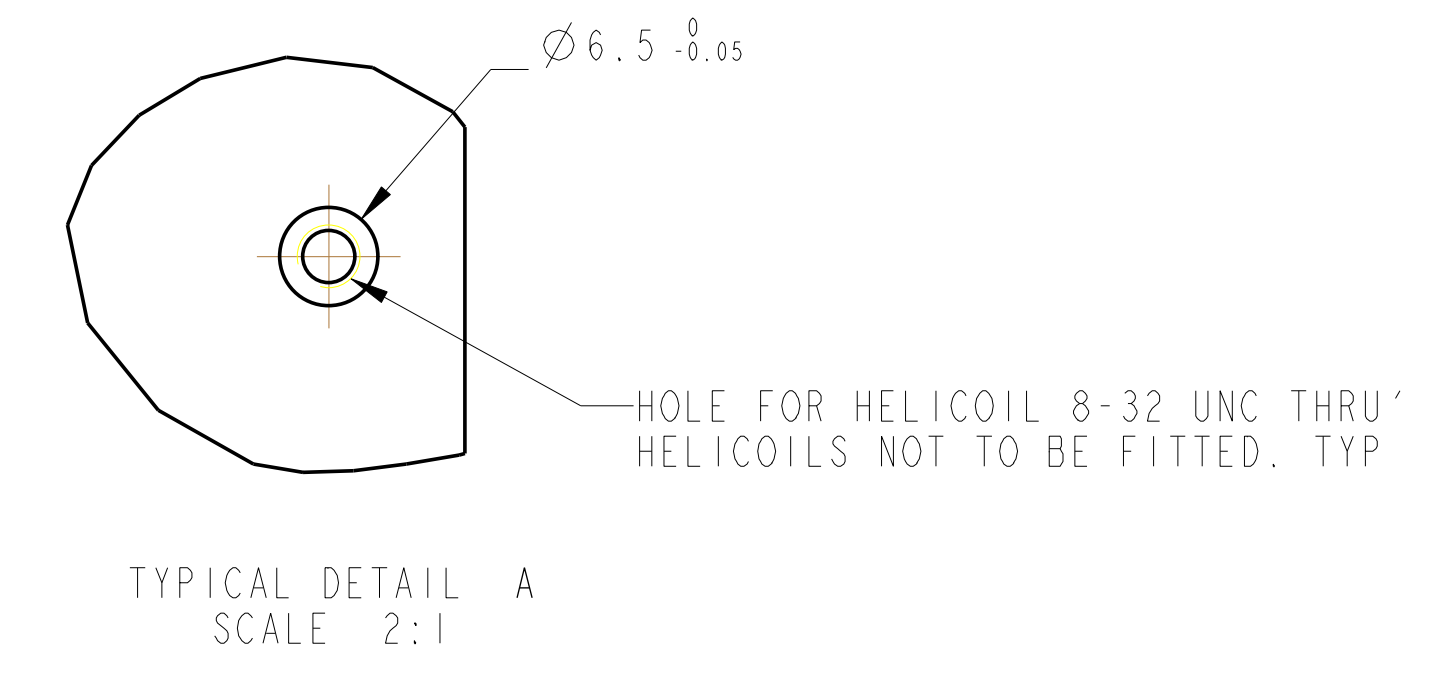
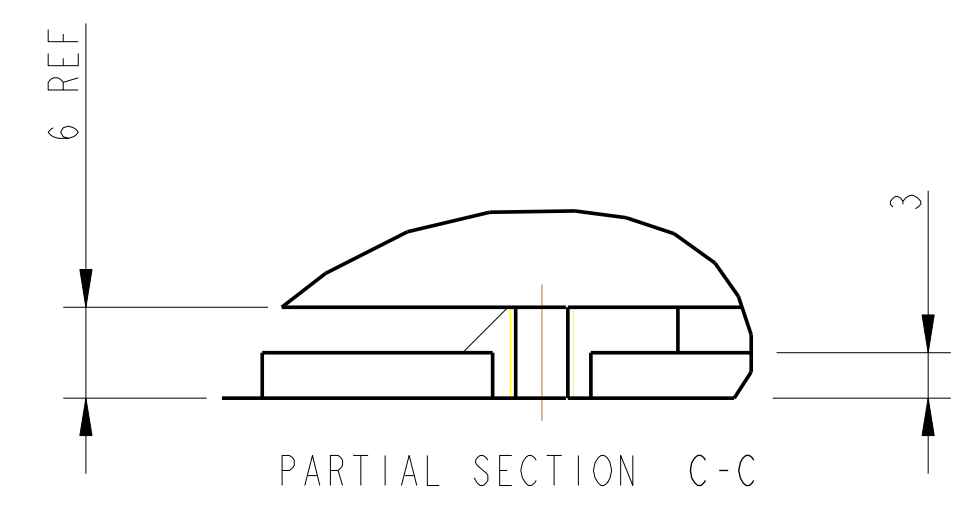
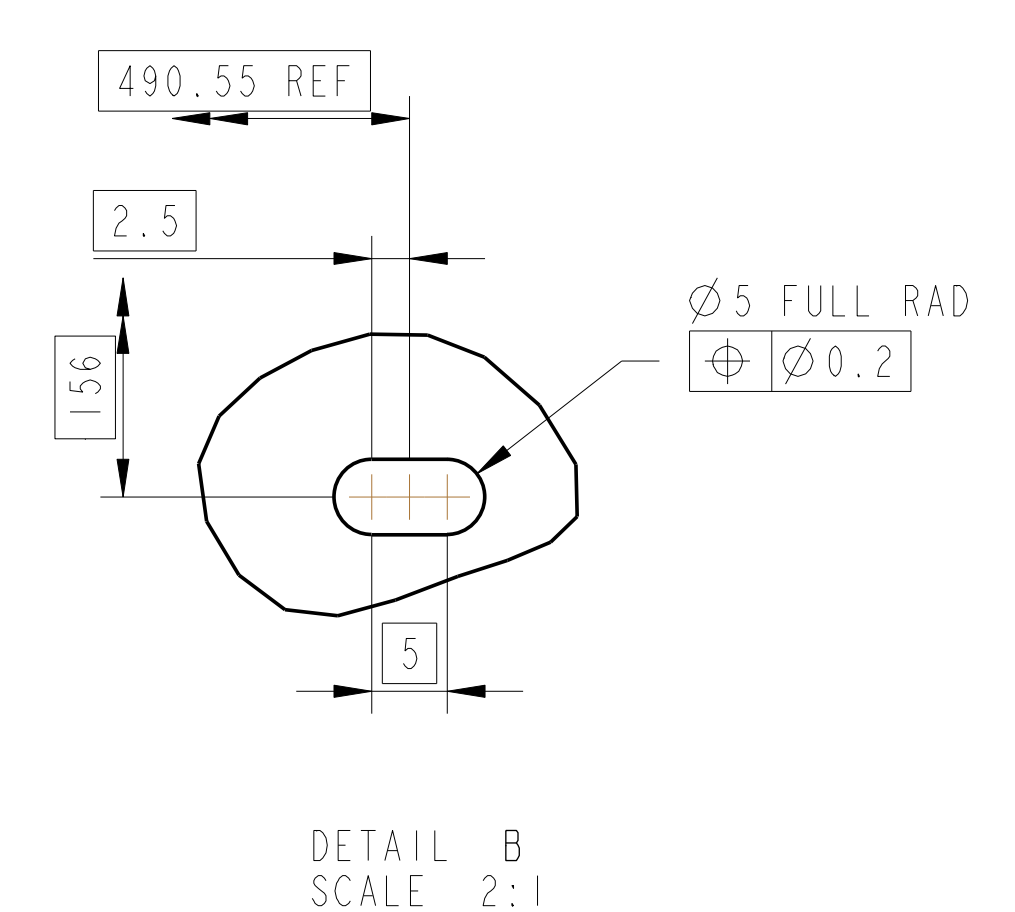
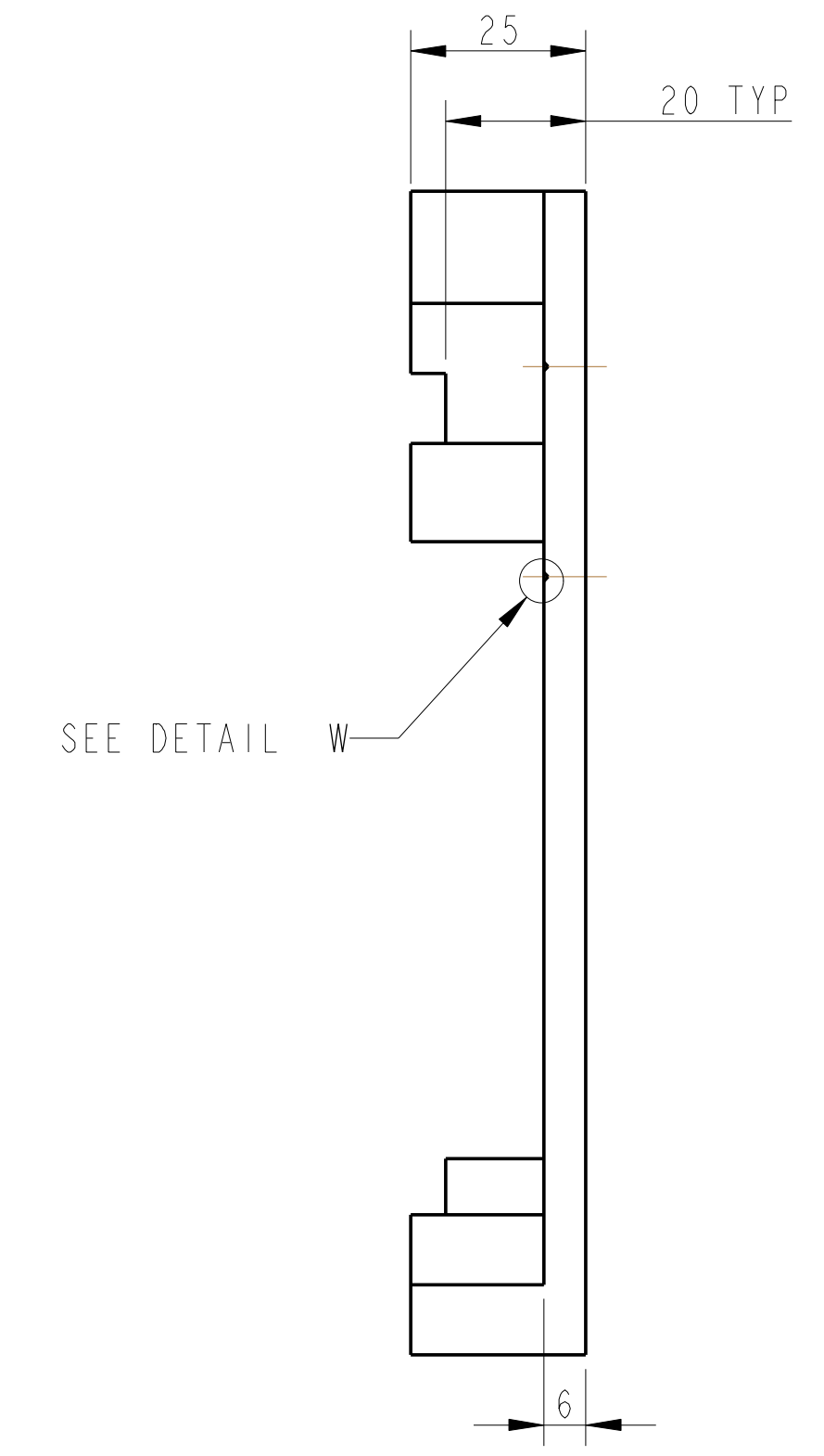
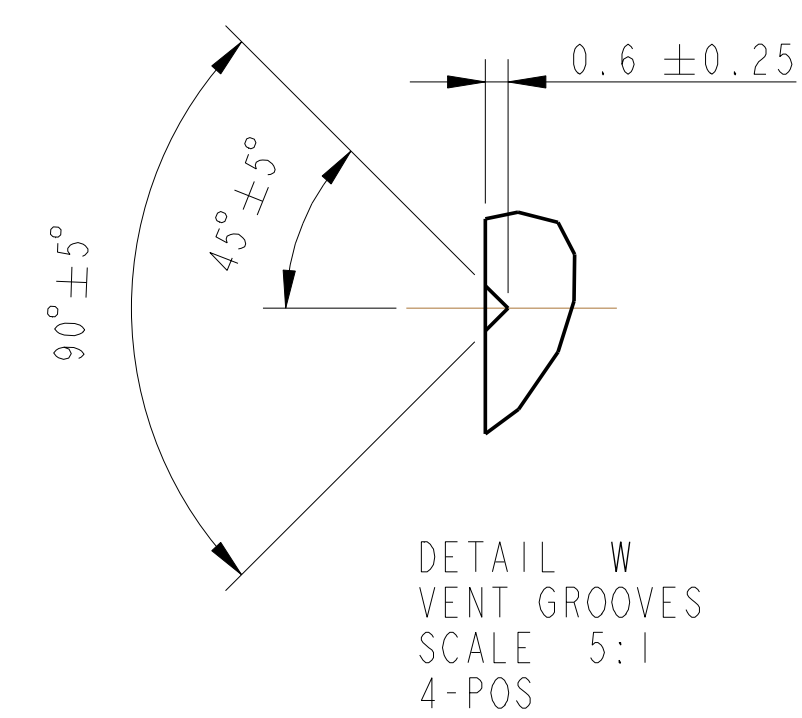
7-HOLES FOR HELICOILS 1/4-20 UNC THRU'
HELICOILS NOT TO BE FITTED.

1.4 ± 0.2 TYP
6 TYP
6 TYP

RE-1.0 PLACES

PART NO. (SEE NOTE 4)
TO BE ETCHED OR STAMPED
IN APPROX POSITION SHOWN.

6 HOLES FOR HELICOILS 1/4-20-UNC THRU'.
HELICOILS NOT TO BE FITTED.



REAM (H7) Ø 5 THRU'
TYP
Ø 0.2

4 HOLES Ø 6.8 THRU'
Ø 0.2

ENGRAVE 90° VEE
GROOVE 0.75 DP (TYP)

Ø 5 ± 0.05
BOSS
Ø 6 TYP
TOOLING RAD

SEE DETAIL B

NOTES: UNLESS OTHERWISE SPECIFIED:

- REMOVE ALL SHARP EDGES.
- ALL DIMENSIONS ARE IN MILLIMETERS UNLESS OTHERWISE SPECIFIED.
- DO NOT SCALE FROM DRAWING.
- ALL WORKING DIMENSIONS SHALL BE INDICATED TO THE NEAREST 0.1 MM UNLESS OTHERWISE SPECIFIED.
- SCHEMATIC DRAWING OF STAMP CLEANING AND FINISHING OPERATIONS SHALL BE PROVIDED FOR WORKING DIMENSIONS OF PARTS AND A THREE-DIGIT STRAIN ANALYSIS SHALL BE PROVIDED FOR STAMPING OPERATIONS.
- ALL DIMENSIONS SHALL BE TO UNLESS OTHERWISE SPECIFIED.
- CONFORM TO MIL-STD-1530.
- CONFORM TO MIL-STD-1530.
- CONFORM TO MIL-STD-1530.
- CONFORM TO MIL-STD-1530.

DATE	13/OCT/16	DRN #	ED6239	SYSTEM	ADVANCED LIGO
DATE	19/OCT/17	DRN #	ED6239 B	SYSTEM	ADVANCED LIGO
DATE	16/JULY/20	DRN #	ED6239 D	SYSTEM	ADVANCED LIGO

CALIFORNIA INSTITUTE OF TECHNOLOGY
CALTECH
PHYSICS DEPARTMENT
PASCADEN, CALIFORNIA 91125
PHYSICS DEPARTMENT
PASCADEN, CALIFORNIA 91125
PHYSICS DEPARTMENT
PASCADEN, CALIFORNIA 91125

QUAD INPTYPE TABLECLOTH
RIGHT HAND PLATE
NOISE TABLECLOTH

SCALE: 1:1 PRODUCTIONS