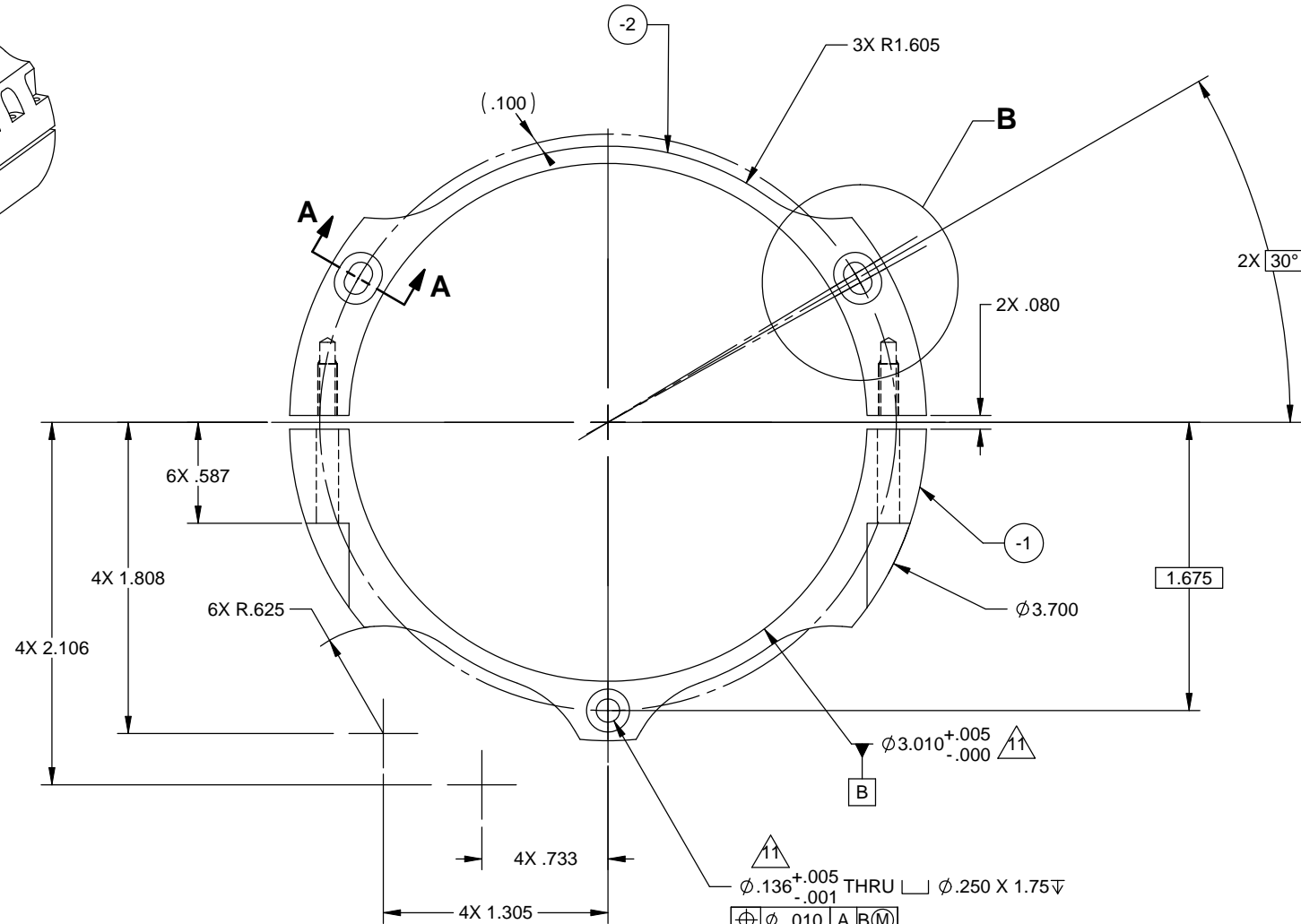
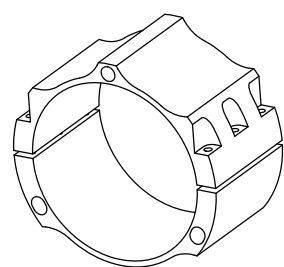
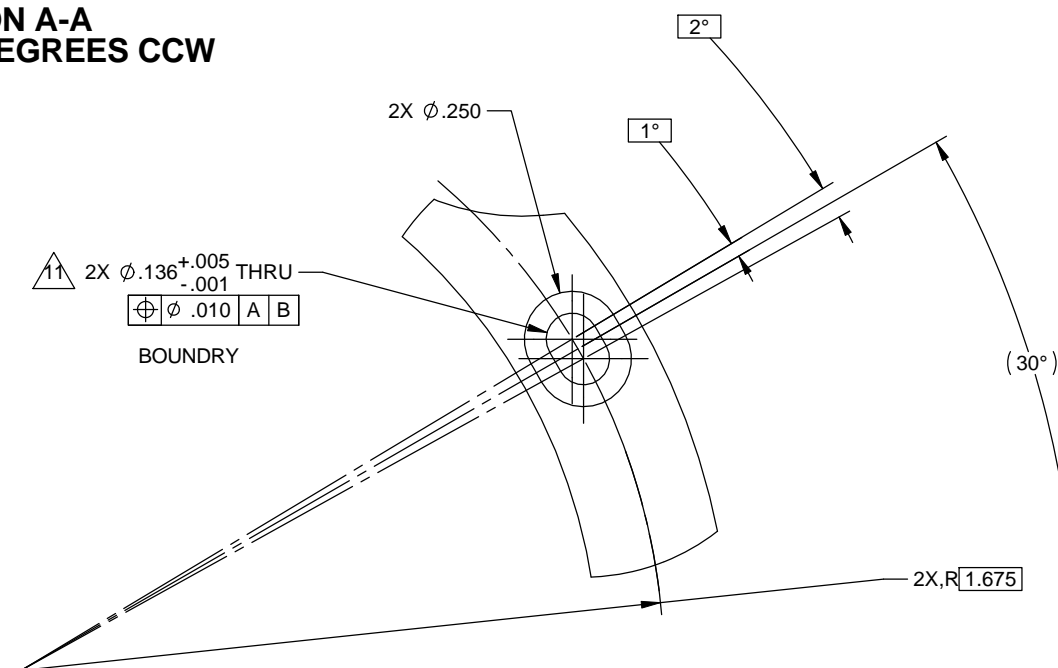


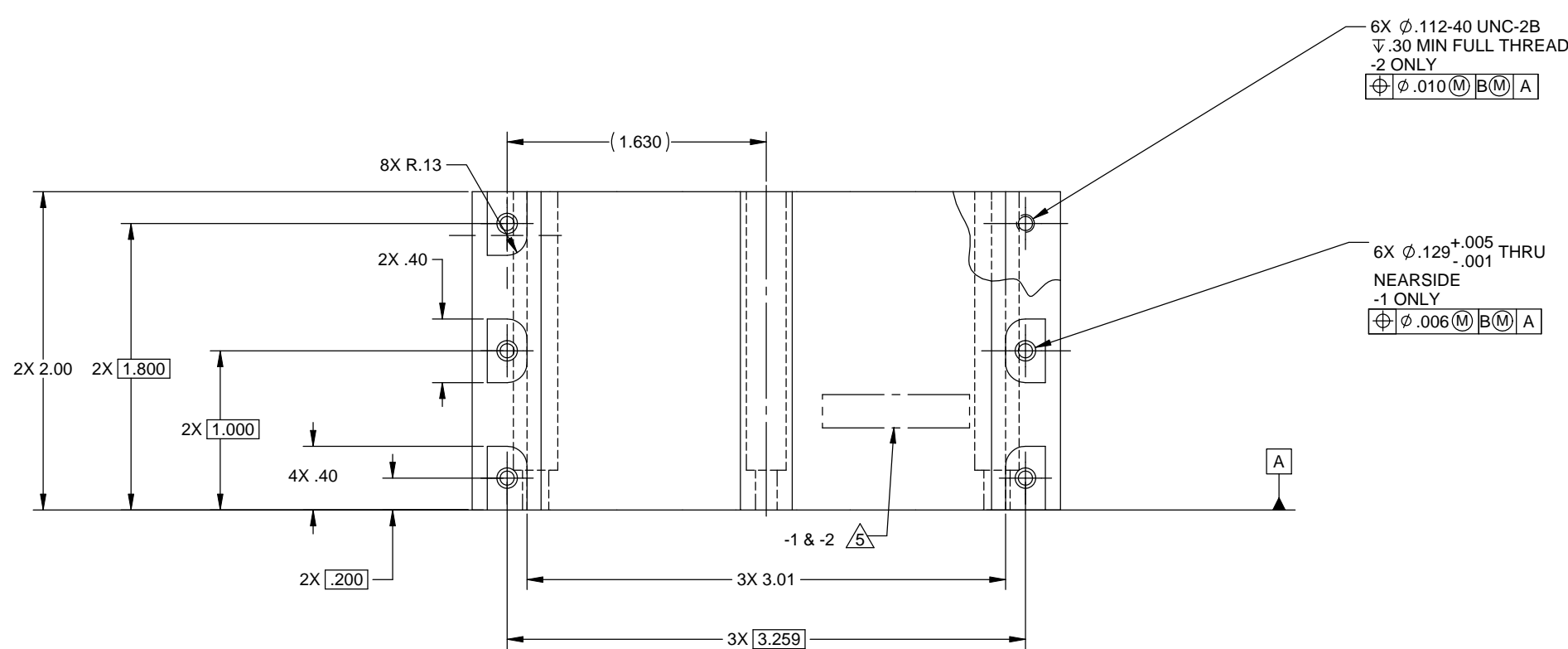
REV.	DATE	DCN #	DRAWING TREE #
v1	02 Dec. 2004	-	-
v2	13 Aug. 2009	-	-
v3	27 Jan. 2010	E0900436-x0	E1000025
v4	20 Feb. 2010	E1000048-x0	E1000025
v5	23 Apr. 2010	E1000140-v1	E1000025



**SECTION A-A
ROTATED 30 DEGREES CCW**



**DETAIL B
SCALE 4 : 1
2X**



NOTES CONTINUED:

- 5 Scribe, engrave, or mechanically stamp (no ink or dyes) drawing part number, revision (and variant or "type" if applicable) on noted surface of part followed on the next line with a three digit serial number. Serial numbers start at 001 for the first article and proceed consecutively. Use minimum 0.12 high characters, unless the size of the part dictates smaller characters. A vibratory tool may be used. Example DXXXXXXX-VY, TYPE-XX, S/N XXX.
- 6. ABRASIVE REMOVAL TECHNIQUES ARE NOT ACCEPTABLE.
- 7. MACHINE FILLET RADII .003-.015.
- 8. COUNTERSINK 82° ALL TAPPED HOLES TO MAJOR DIAMETER +.015/-.000.
- 9. COUNTERSINK 82° ALL DRILLED HOLES .015-.030 DEEP BOTH SIDES.
- 10. PART TO BE MANUFACTURED IN ACCORDANCE WITH LIGO SPECIFICATION E0900364.
- 11 NOTED FEATURES SHALL BE INSPECTED PRIOR TO .080 FEATURE COMPLETION.

NOTES AND TOLERANCES: (UNLESS OTHERWISE SPECIFIED)

DIMENSIONS ARE IN INCHES	
TOLERANCES: .XX ± .015 .XXX ± .005	
ANGULAR ± 0.5°	
MATERIAL	FINISH
6061-T6	63 µinch

CALIFORNIA INSTITUTE OF TECHNOLOGY MASSACHUSETTS INSTITUTE OF TECHNOLOGY		PART NAME		Clamp for L4C in Pod	
SYSTEM	ADVANCED LIGO	SUB-SYSTEM	SEI	DESIGNER	ASI
				DRAFTER	F.MATCHARD
				CHECKER	S.BARNUM
				APPROVAL	K.MASON
DATE	02 DEC. 2004	SIZE	D	DWG. NO.	D047824
REV.	v5	SCALE:	2:1	PROJECTION:	
SHEET 1 OF 1					

D047824 - Clamp for L4C in Pod - PART FROM REV: V3 0001 DRAWING FROM REV: V3 002