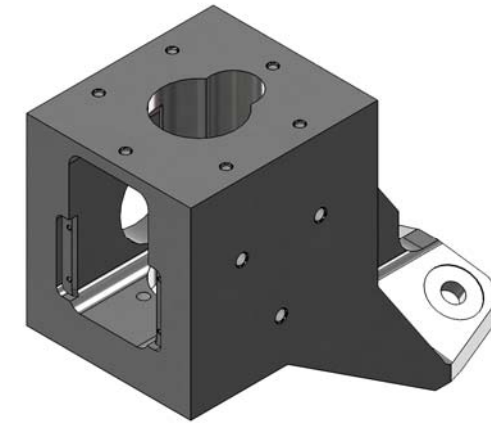
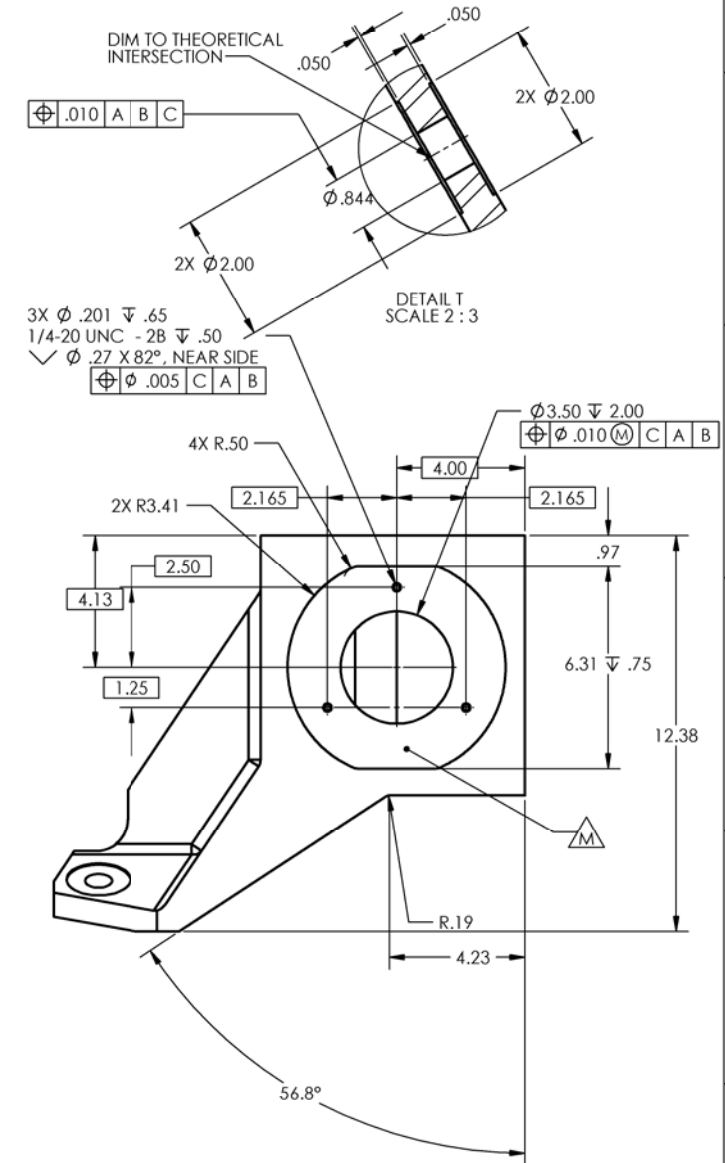
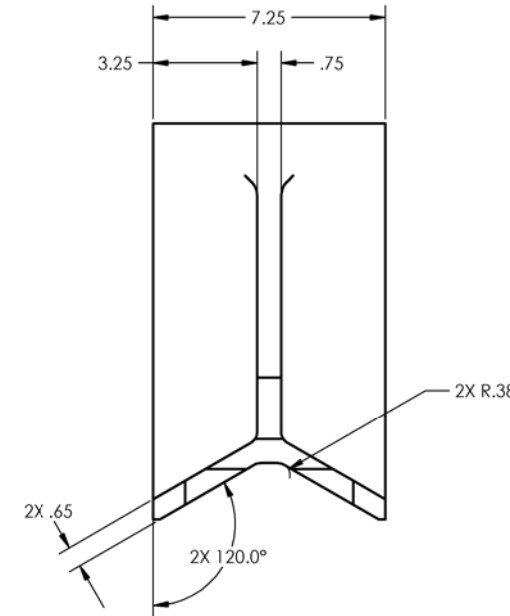
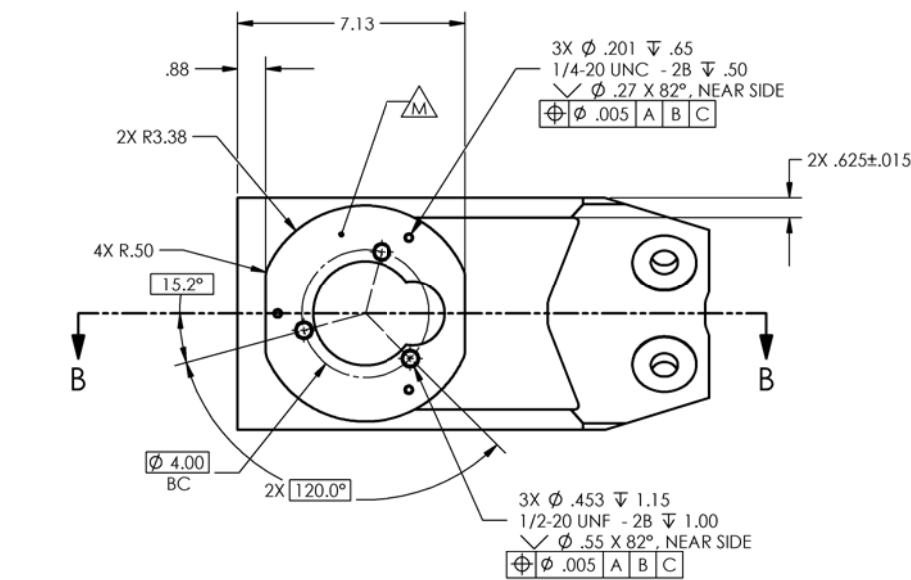
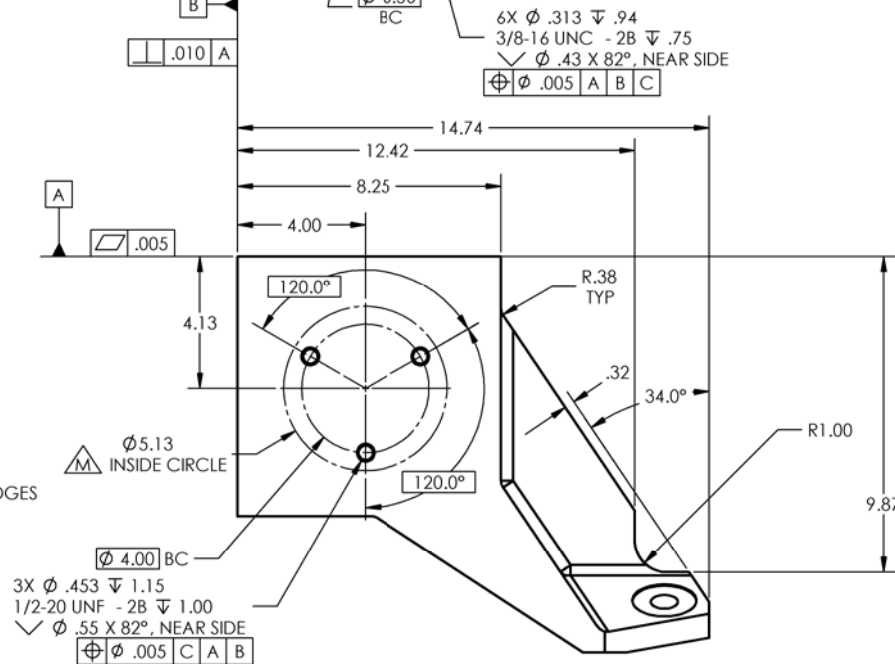
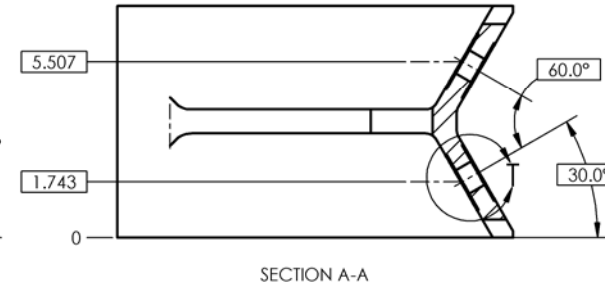
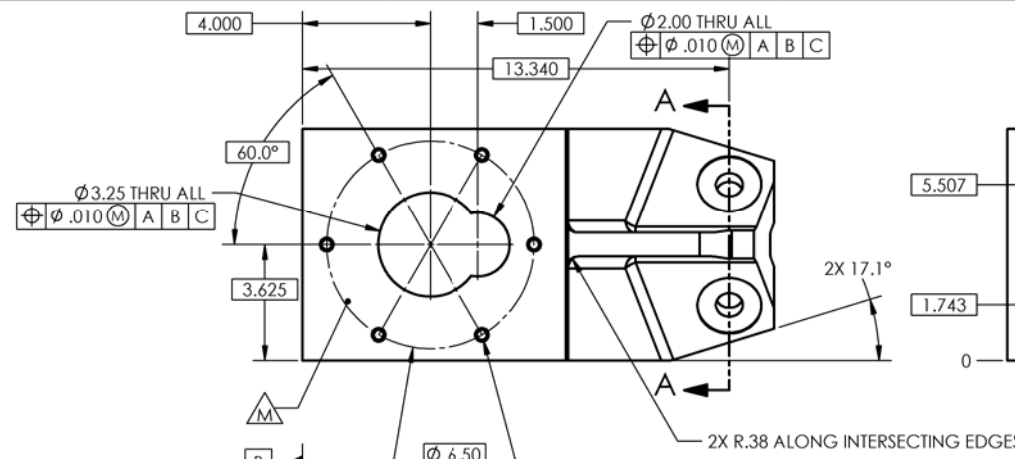
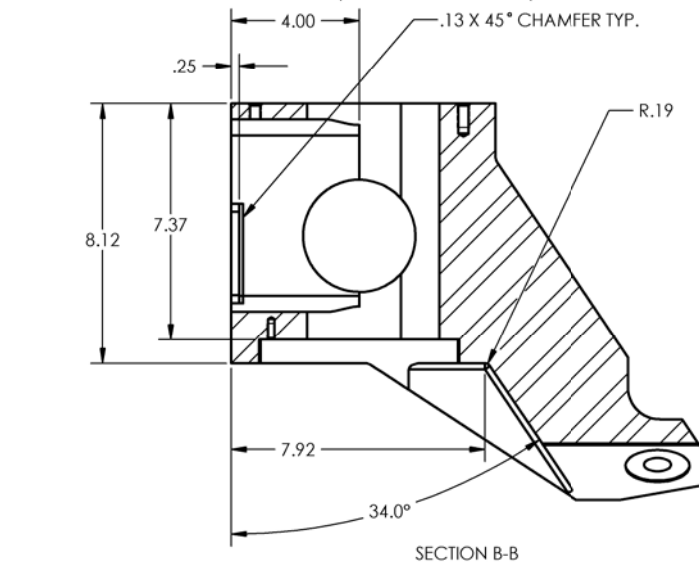
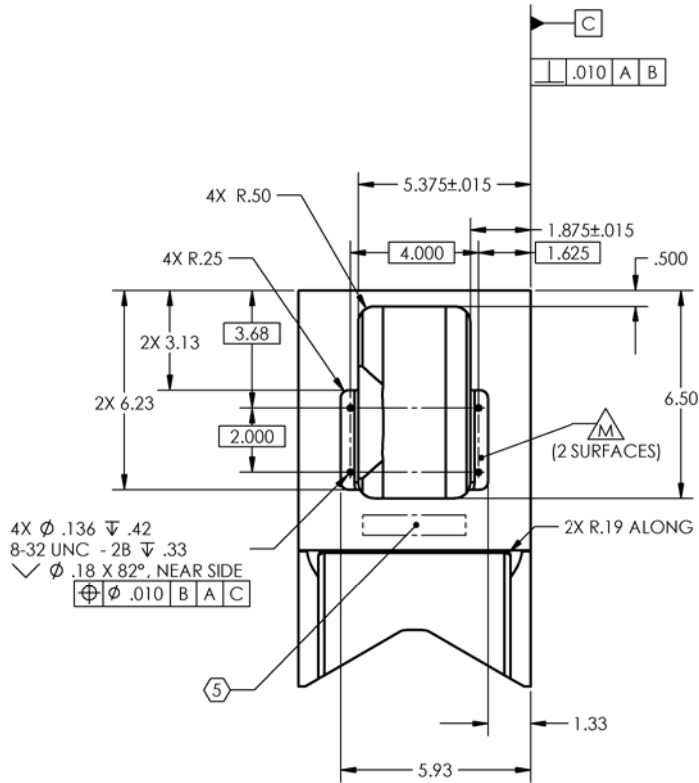


NOTES CONTINUED:

4. ALL MACHINING FLUIDS MUST BE FULLY SYNTHETIC, FULLY WATER SOLUBLE AND FREE OF SULFUR, SILICONE AND CHLORINE.
5. SCRIBE, ENGRAVE, OR MECHANICALLY STAMP (NO INKS OR DYES) DRAWING PART NUMBER, REVISION (AND VARIANT OR "TYPE" IF APPLICABLE ON NOTED SURFACE OF PART FOLLOWED ON THE NEXT LINE WITH A THREE DIGIT SERIAL NUMBER. SERIAL NUMBERS START AT 001 FOR THE FIRST ARTICLE AND PROCEED CONSECUTIVELY. USE MINIMUM 0.12 HIGH CHARACTERS, UNLESS THE SIZE OF THE PART DICTATES SMALLER CHARACTERS. A VIBRATORY TOOL MAY BE USED. EXAMPLE DXXXXXX-VY, TYPE-XX, S/N XXX.
6. APPROXIMATE WEIGHT = 99.32 LB.
7. ALL PARTS SHALL BE MANUFACTURED IN ACCORDANCE WITH LIGO SPECIFICATION E0900364.
8. PLUG ALL SCREW HOLES, BOTH TAPPED AND THRU.
9. PAINT ALL SURFACES, EXCEPT WHERE INDICATED BY Δ . USE MEDIUM BLUE SHERWIN WILLIAMS (POLANE (R) T-PLUS POLYURETHANE ENAMEL). PRIME WITH SHERWIN WILLIAMS INDUSTRIAL WASH PRIMER P60G2.
10. APPLY "OXISOLV RUST INHIBITOR" TO ALL UNPAINTED SURFACES, PER MFG INSTRUCTIONS. REMOVE PLUGS FROM ALL HOLES.

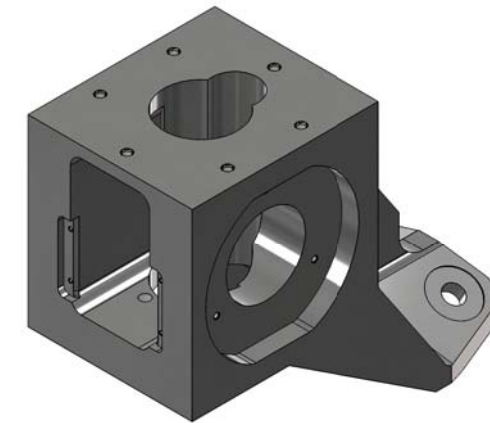
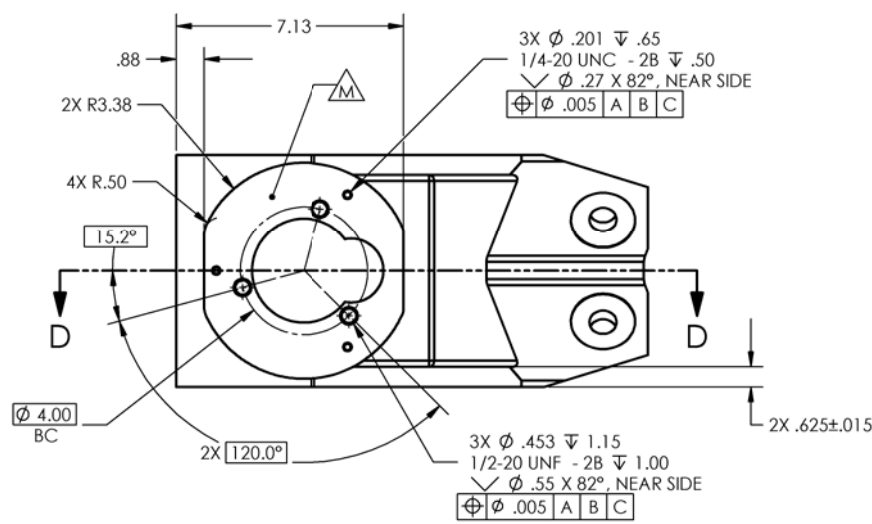
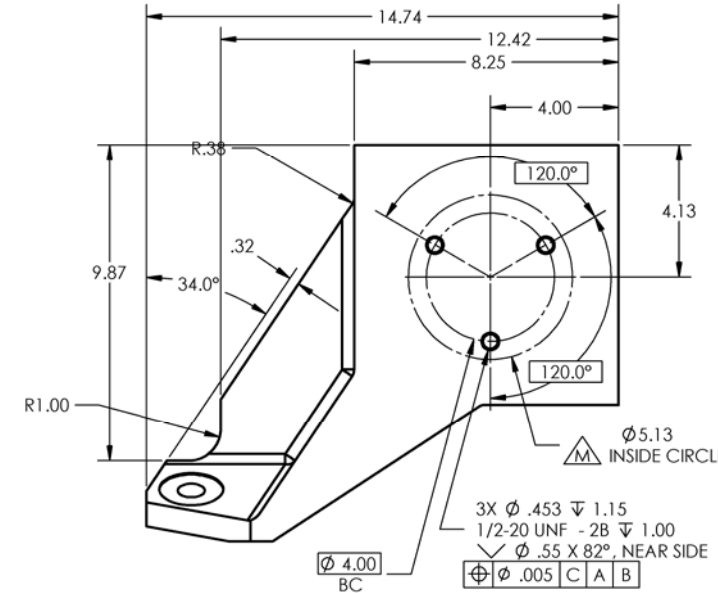
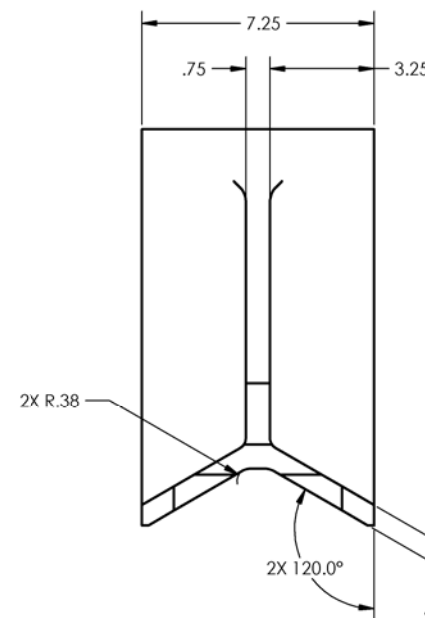
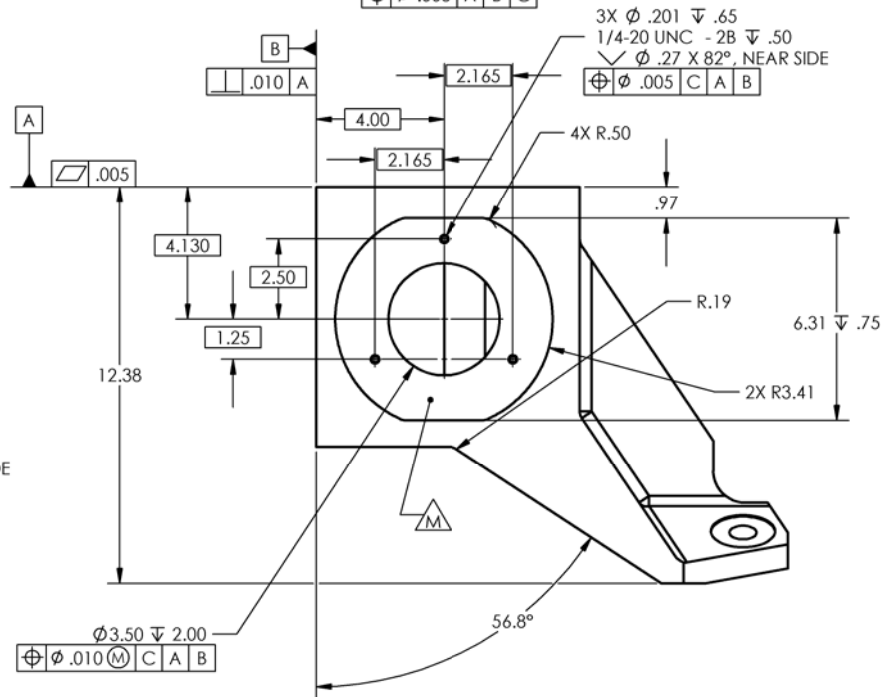
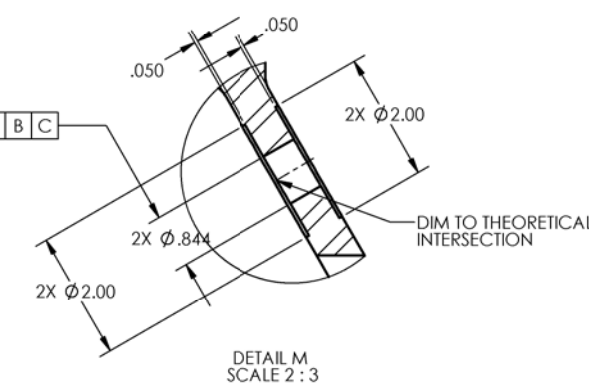
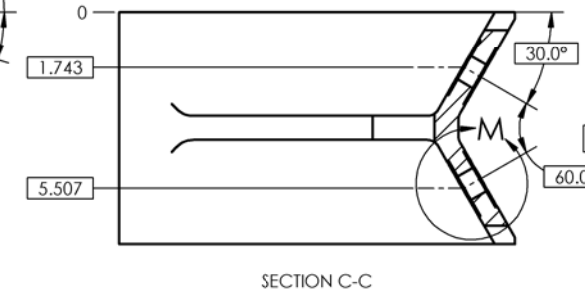
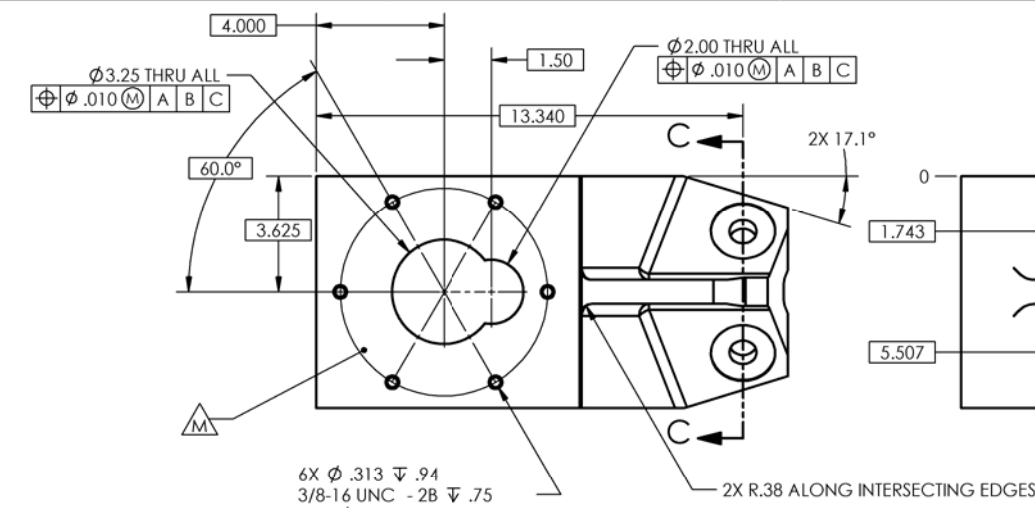
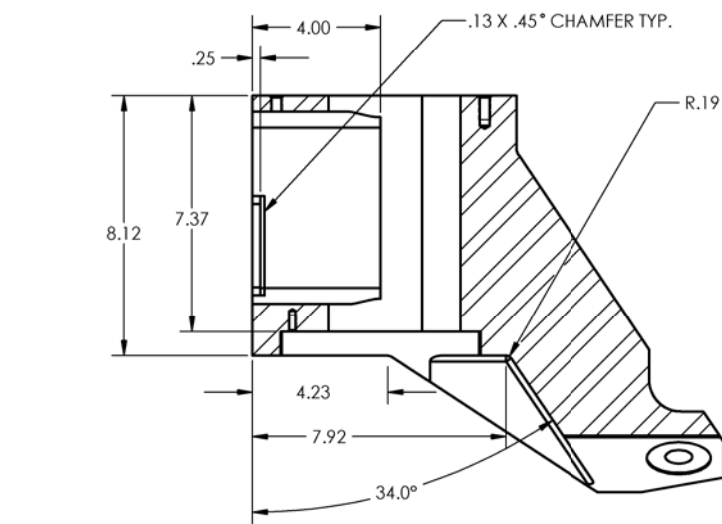
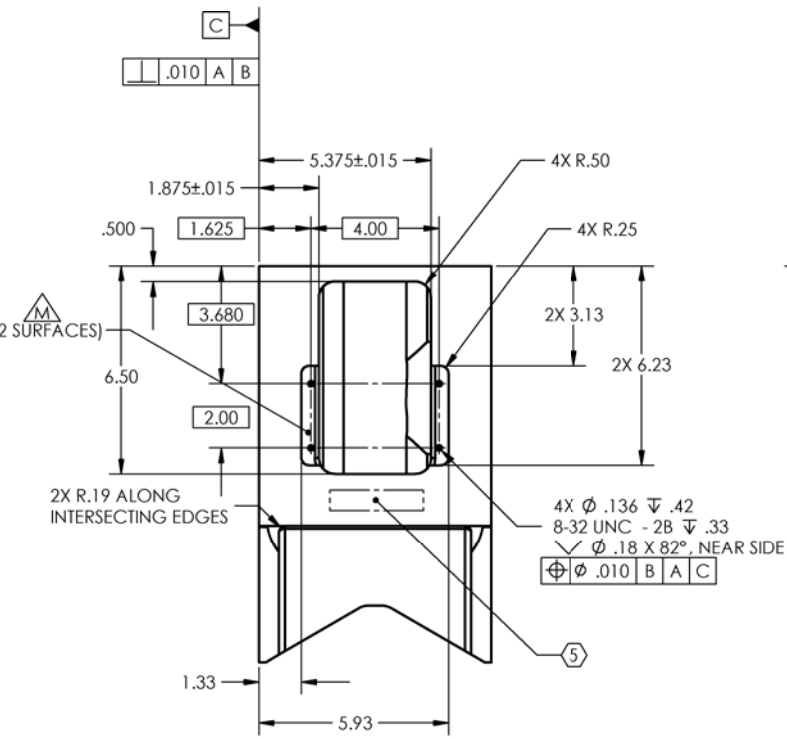
REV.	DATE	DCN #	DRAWING TREE #
v3	7 Mar 2011	E1100015	E1100016



NOTES AND TOLERANCES: (UNLESS OTHERWISE SPECIFIED)		LIGO CALIFORNIA INSTITUTE OF TECHNOLOGY MASSACHUSETTS INSTITUTE OF TECHNOLOGY		PART NAME	
DIMENSIONS ARE IN INCHES TOLERANCES: .XX ±.015 .XXX ±.005 ANGULAR ±.5°		1. INTERPRET DRAWING PER ASME Y14.5-1994. 2. REMOVE ALL SHARP EDGES, R.02 MIN. 3. DO NOT SCALE FROM DRAWING. 4. ALL MACHINING FLUIDS MUST BE FULLY SYNTHETIC, FULLY WATER SOLUBLE AND FREE OF SULFUR, SILICONE, AND CHLORINE.		HEPI CROSSBEAM FOOT RIGHT, aLIGO BSC	
MATERIAL		FINISH		NEXT ASSY	
Low Carbon Steel		63 μinch		D1100305	
SYSTEM		SUB-SYSTEM		DESIGNER	
ADVANCED LIGO		SEI		A. STEIN	
CHECKER		APPROVAL		DATE	
K. MASON		K. MASON		31 July 2003	
APPROVAL		SCALE		DWG. NO.	
K. MASON		1:3		D	
7 Mar 2011		PROJECTION:		D020195-00	
SHEET 1 OF 4		REVISION		v3	

- NOTES CONTINUED:
- ALL MACHINING FLUIDS MUST BE FULLY SYNTHETIC, FULLY WATER SOLUBLE AND FREE OF SULFUR, SILICONE AND CHLORINE.
 - SCRIBE, ENGRAVE, OR MECHANICALLY STAMP (NO INKS OR DYES) DRAWING PART NUMBER, REVISION (AND VARIANT OR "TYPE" IF APPLICABLE) ON NOTED SURFACE OF PART FOLLOWED ON THE NEXT LINE WITH A THREE DIGIT SERIAL NUMBER. SERIAL NUMBERS START AT 001 FOR THE FIRST ARTICLE AND PROCEED CONSECUTIVELY. USE MINIMUM 0.12 HIGH CHARACTERS, UNLESS THE SIZE OF THE PART DICTATES SMALLER CHARACTERS. A VIBRATORY TOOL MAY BE USED. EXAMPLE DXXXXXX-VY, TYPE-XX, S/N XXX.
 - APPROXIMATE WEIGHT = 99.32 LB.
 - ALL PARTS SHALL BE MANUFACTURED IN ACCORDANCE WITH LIGO SPECIFICATION E0900364.
 - PLUG ALL SCREW HOLES, BOTH TAPPED AND THRU.
 - PAINT ALL SURFACES, EXCEPT WHERE INDICATED BY . USE MEDIUM BLUE SHERWIN WILLIAMS (POLANE (R) T-PLUS POLYURETHANE ENAMEL). PRIME WITH SHERWIN WILLIAMS INDUSTRIAL WASH PRIMER P60G2.
 - APPLY "OXISOLV RUST INHIBITOR" TO ALL UNPAINTED SURFACES, PER MFG INSTRUCTIONS. REMOVE PLUGS FROM ALL HOLES.

REV.	DATE	DCN #	DRAWING TREE #
v3	7 Mar 2011	E1100015	E1100016

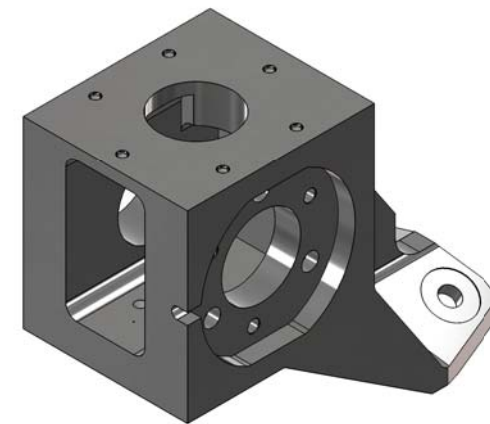
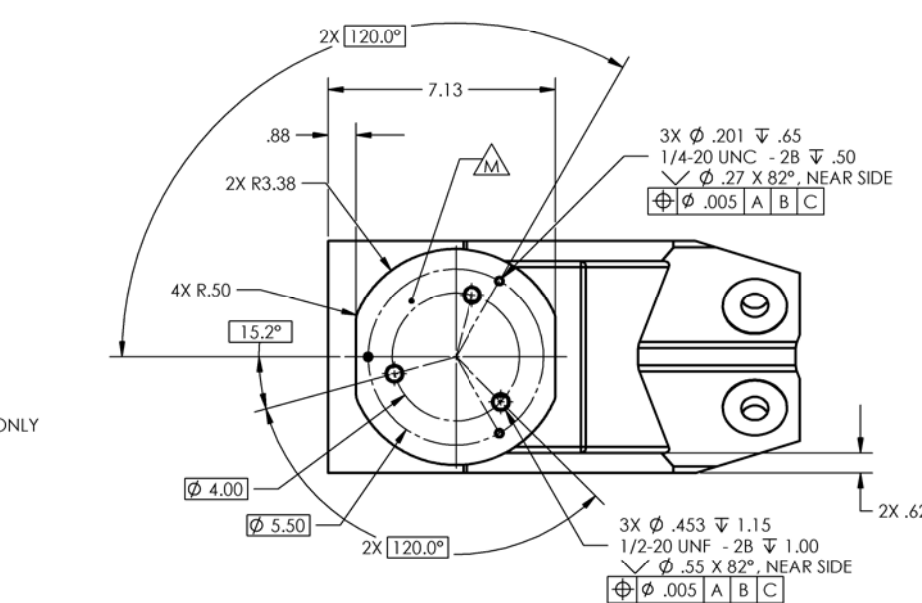
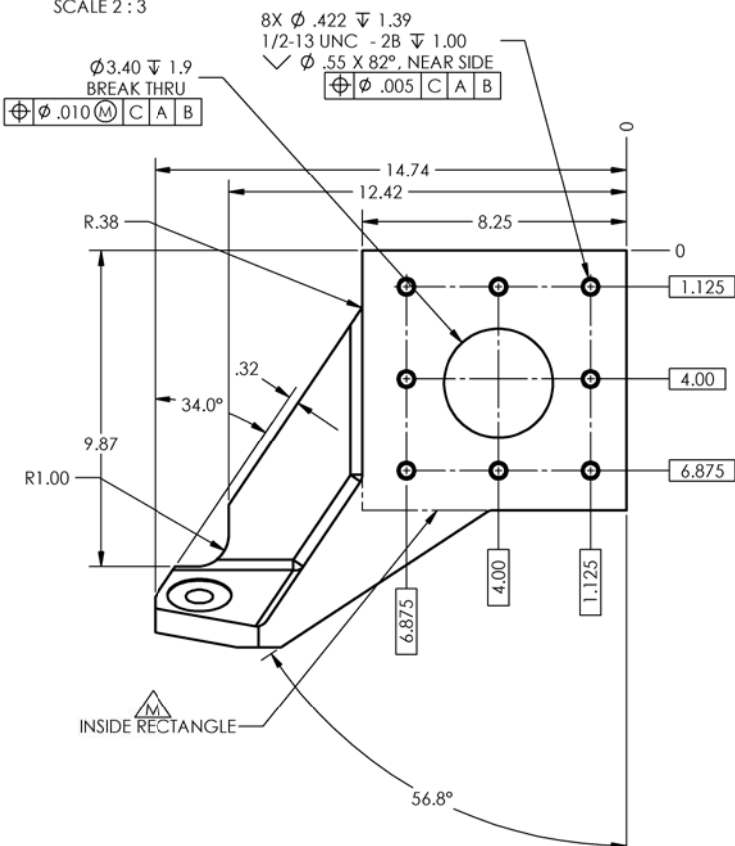
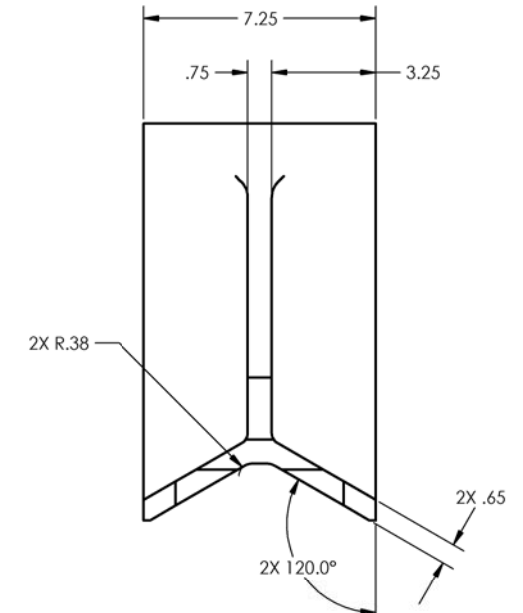
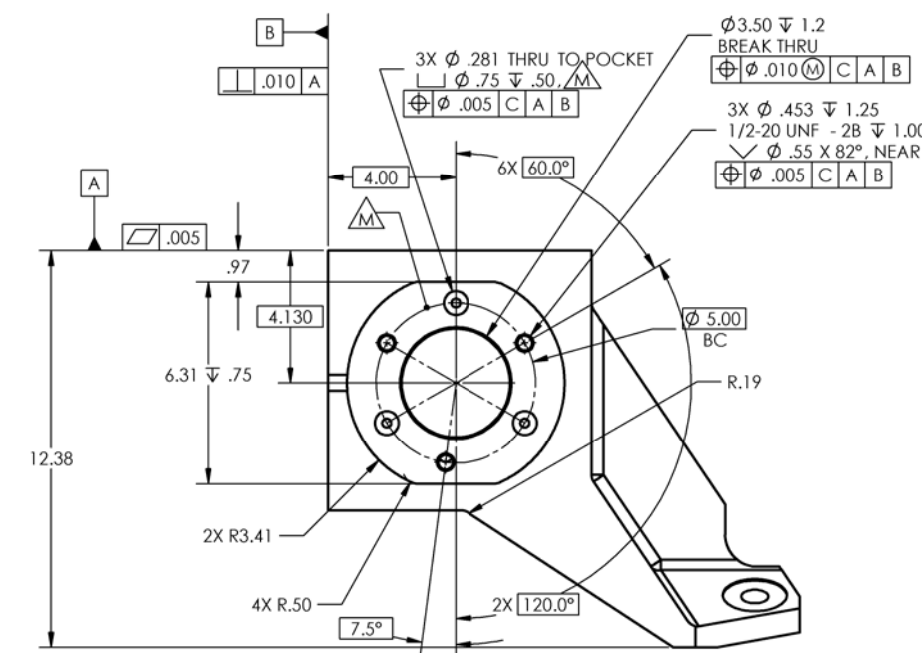
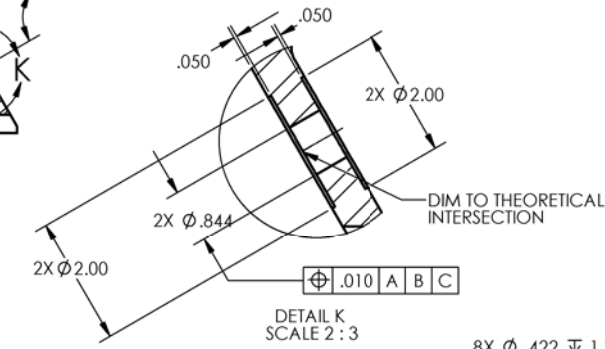
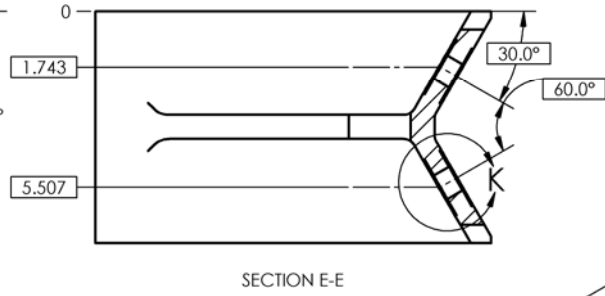
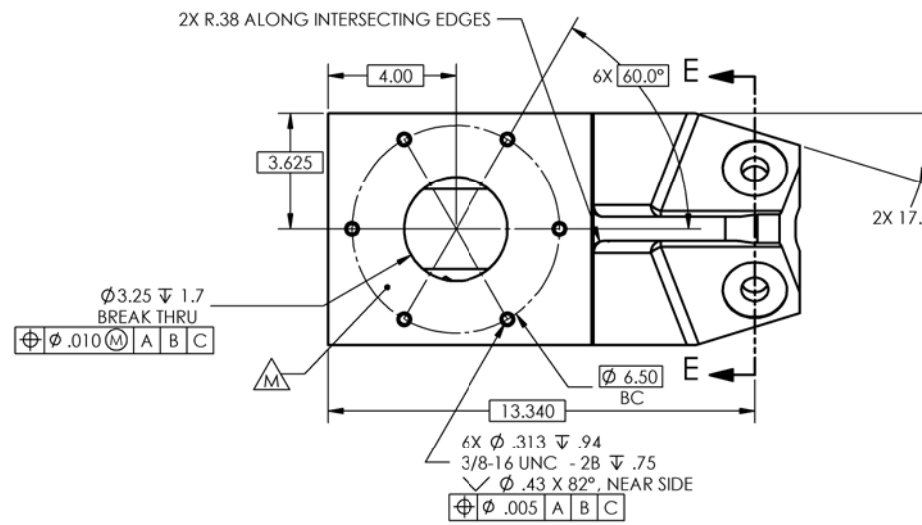
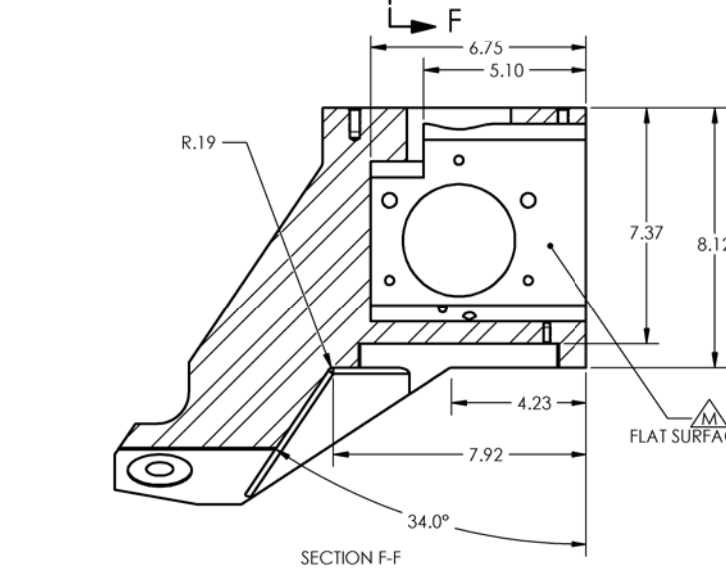
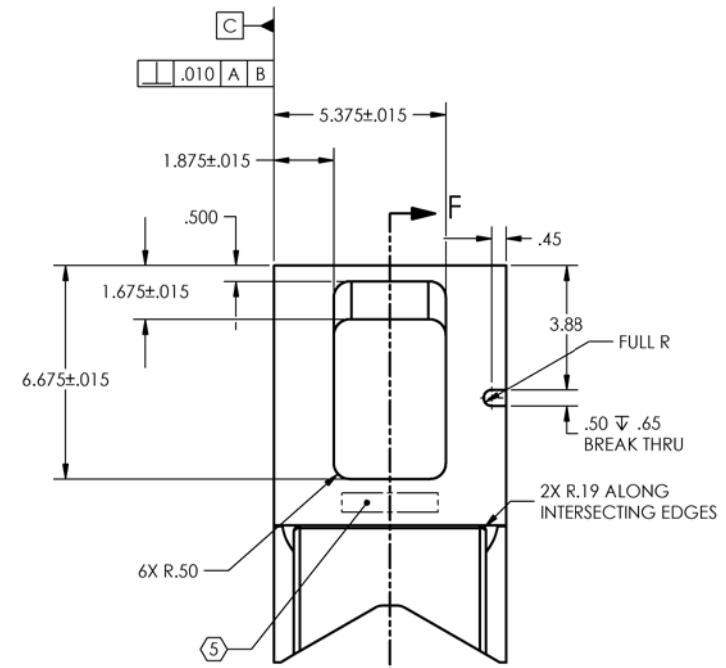


NOTES AND TOLERANCES: (UNLESS OTHERWISE SPECIFIED)		LIGO CALIFORNIA INSTITUTE OF TECHNOLOGY MASSACHUSETTS INSTITUTE OF TECHNOLOGY		PART NAME	
DIMENSIONS ARE IN INCHES TOLERANCES: .XX ±.015 .XXX ±.005 ANGULAR ±.5°		1. INTERPRET DRAWING PER ASME Y14.5-1994. 2. REMOVE ALL SHARP EDGES, R.02 MIN. 3. DO NOT SCALE FROM DRAWING. 4. ALL MACHINING FLUIDS MUST BE FULLY SYNTHETIC, FULLY WATER SOLUBLE AND FREE OF SULFUR, SILICONE, AND CHLORINE.		HEPI CROSSBEAM FOOT LEFT, αLIGO BSC	
MATERIAL: Low Carbon Steel FINISH: 63 μinch		SYSTEM: ADVANCED LIGO SUB-SYSTEM: SEI NEXT ASSY: D1100306		DESIGNER: A. STEIN 31 July 2003 DRAFTER: M. HAMMOND 07/31/2003 CHECKER: K. MASON 7 Mar 2011 APPROVAL: K. MASON 7 Mar 2011	
SIZE: D DWG. NO.: D020195-01 SCALE: 1:3 PROJECTION:				REV. v3 SHEET 2 OF 4	

D020195 HEPi CROSSBEAM FOOT, PART PDM REV: X-016, DRAWING PDM REV: X-007

- NOTES CONTINUED:
- ALL MACHINING FLUIDS MUST BE FULLY SYNTHETIC, FULLY WATER SOLUBLE AND FREE OF SULFUR, SILICONE AND CHLORINE.
 - SCRIBE, ENGRAVE, OR MECHANICALLY STAMP (NO INKS OR DYES) DRAWING PART NUMBER, REVISION (AND VARIANT OR "TYPE" IF APPLICABLE ON NOTED SURFACE OF PART FOLLOWED ON THE NEXT LINE WITH A THREE DIGIT SERIAL NUMBER. SERIAL NUMBERS START AT 001 FOR THE FIRST ARTICLE AND PROCEED CONSECUTIVELY. USE MINIMUM 0.12 HIGH CHARACTERS, UNLESS THE SIZE OF THE PART DICTATES SMALLER CHARACTERS. A VIBRATORY TOOL MAY BE USED. EXAMPLE DXXXXXX-VY, TYPE-XX, S/N XXX.
 - APPROXIMATE WEIGHT = 99.32 LB.
 - ALL PARTS SHALL BE MANUFACTURED IN ACCORDANCE WITH LIGO SPECIFICATION E0900364.
 - PLUG ALL SCREW HOLES, BOTH TAPPED AND THRU.
 - PAINT ALL SURFACES, EXCEPT WHERE INDICATED BY Δ . USE MEDIUM BLUE SHERWIN WILLIAMS (POLANE (R) T-PLUS POLYURETHANE ENAMEL). PRIME WITH SHERWIN WILLIAMS INDUSTRIAL WASH PRIMER P60G2.
 - APPLY "OXISOLV RUST INHIBITOR" TO ALL UNPAINTED SURFACES, PER MFG INSTRUCTIONS. REMOVE PLUGS FROM ALL HOLES.

REV.	DATE	DCN #	DRAWING TREE #
v3	7 Mar 2011	E1100015	E1100016



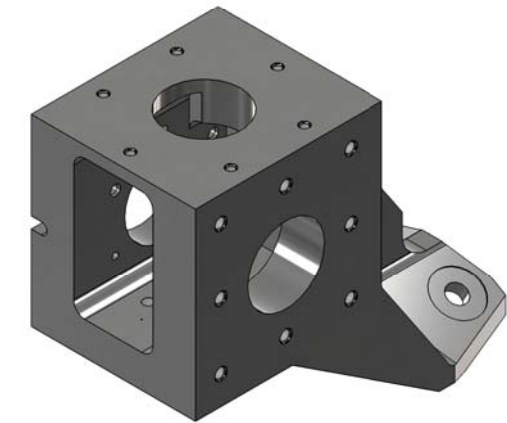
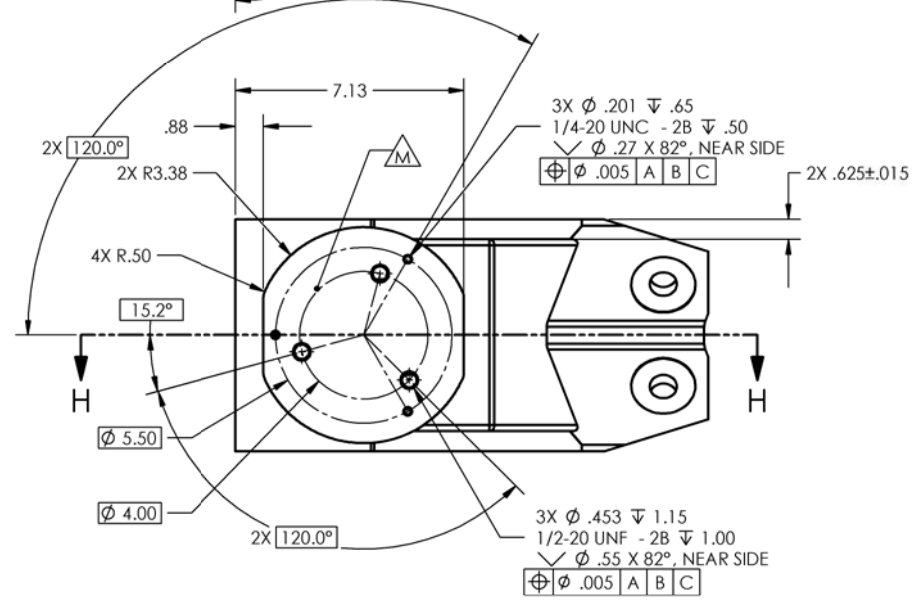
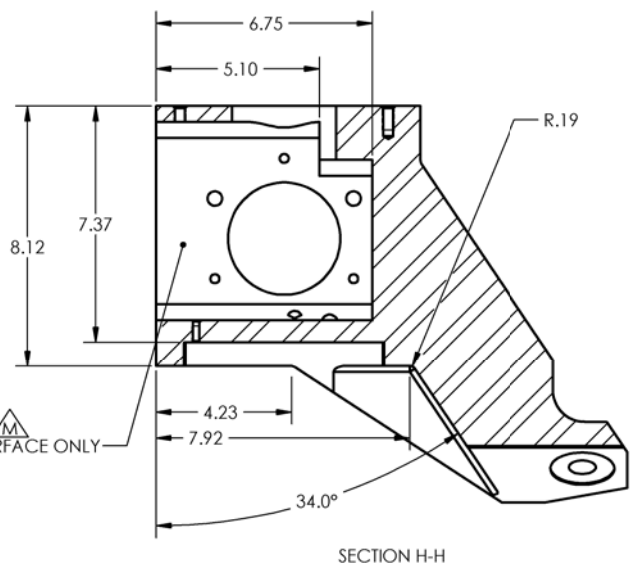
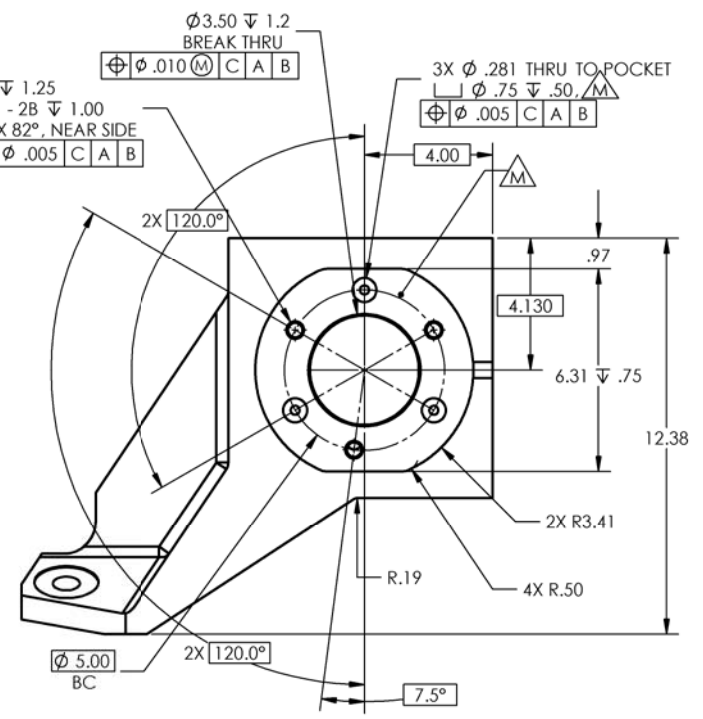
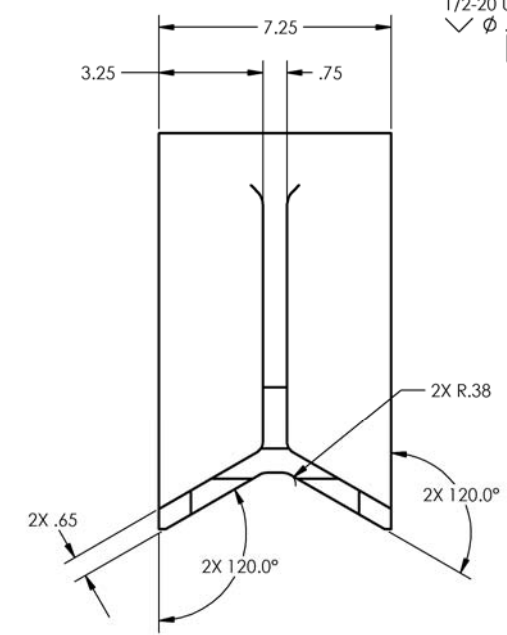
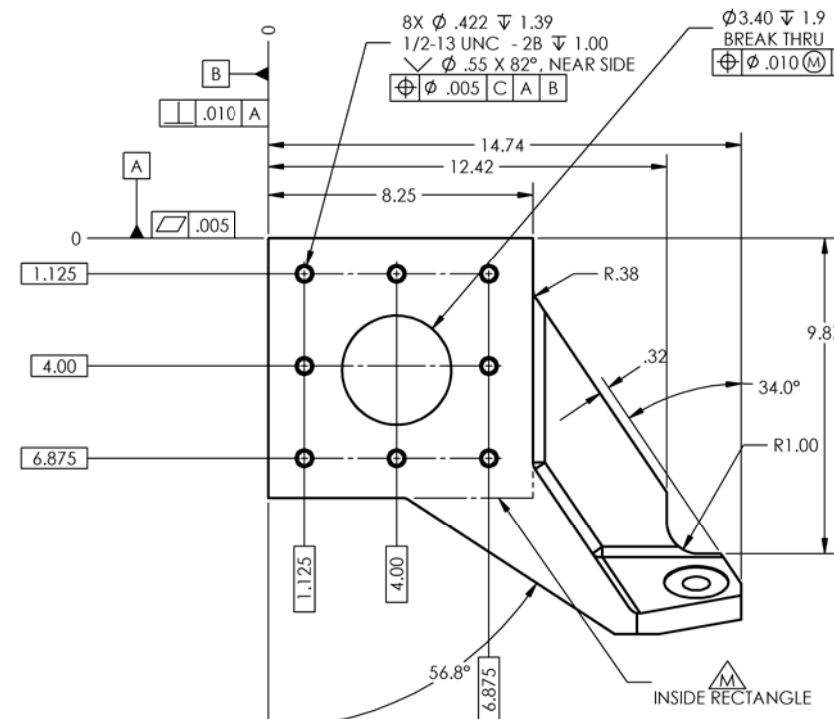
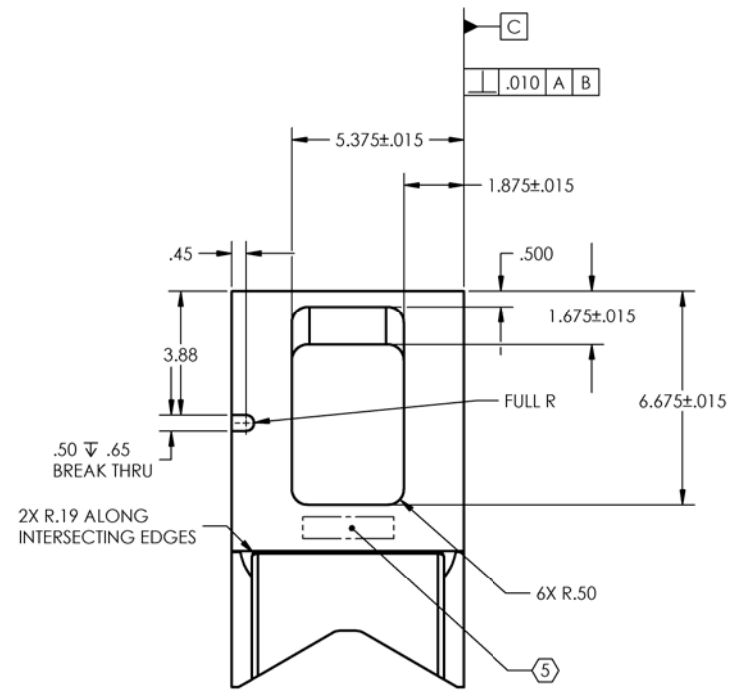
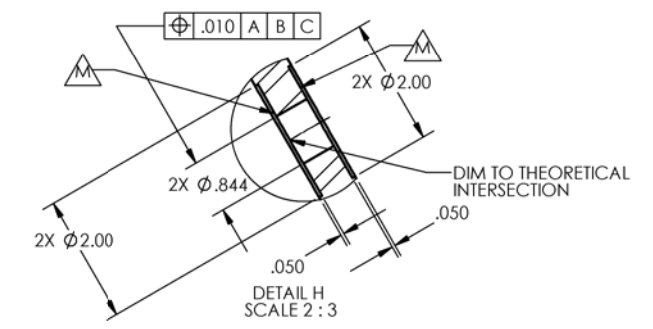
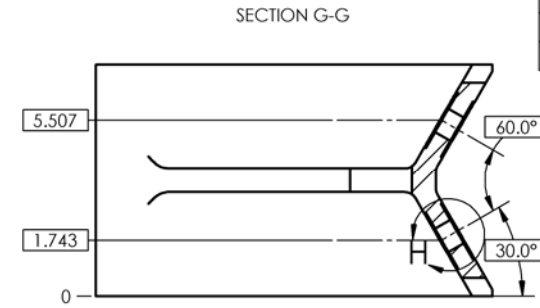
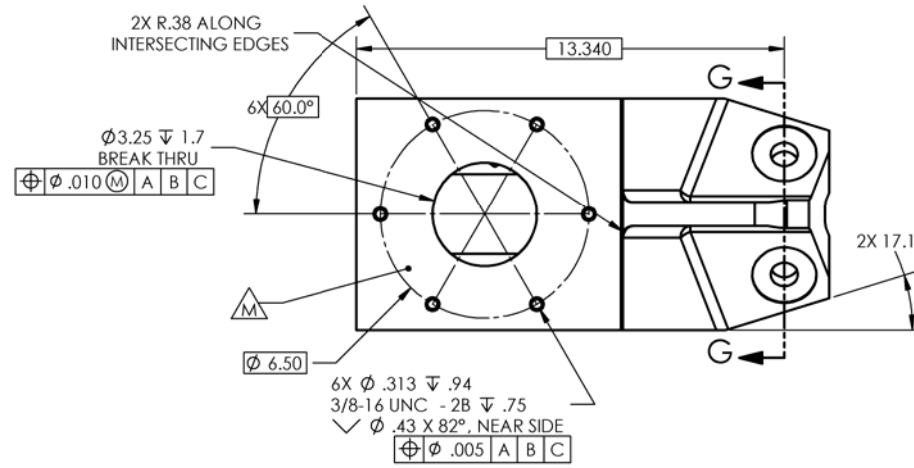
NOTES AND TOLERANCES: (UNLESS OTHERWISE SPECIFIED)		LIGO CALIFORNIA INSTITUTE OF TECHNOLOGY MASSACHUSETTS INSTITUTE OF TECHNOLOGY		PART NAME	
1. INTERPRET DRAWING PER ASME Y14.5-1994. 2. REMOVE ALL SHARP EDGES, R.02 MIN. 3. DO NOT SCALE FROM DRAWING. 4. ALL MACHINING FLUIDS MUST BE FULLY SYNTHETIC, FULLY WATER SOLUBLE AND FREE OF SULFUR, SILICONE, AND CHLORINE.		ADVANCED LIGO		HEPI CROSSBEAM FOOT RIGHT, aLIGO HAM	
DIMENSIONS ARE IN INCHES TOLERANCES: .XX ±.015 .XXX ±.005 ANGULAR ±.5°		MATERIAL: Low Carbon Steel FINISH: 63 μinch		DESIGNER: A. STEIN DRAFTER: M. HAMMOND CHECKER: K. MASON APPROVAL: K. MASON	
		NEXT ASSY: D1100147		SIZE: D DWG. NO.: D020195-02 SCALE: 1:3 PROJECTION:	
				SHEET 3 OF 4	

D020195 HEPI CROSSBEAM FOOT, PART PDM REV: X-016, DRAWING PDM REV: X-007

NOTES CONTINUED:

4. ALL MACHINING FLUIDS MUST BE FULLY SYNTHETIC, FULLY WATER SOLUBLE AND FREE OF SULFUR, SILICONE AND CHLORINE.
5. SCRIBE, ENGRAVE, OR MECHANICALLY STAMP (NO INKS OR DYES) DRAWING PART NUMBER, REVISION (AND VARIANT OR "TYPE" IF APPLICABLE) ON NOTED SURFACE OF PART FOLLOWED ON THE NEXT LINE WITH A THREE DIGIT SERIAL NUMBER. SERIAL NUMBERS START AT 001 FOR THE FIRST ARTICLE AND PROCEED CONSECUTIVELY. USE MINIMUM 0.12 HIGH CHARACTERS, UNLESS THE SIZE OF THE PART DICTATES SMALLER CHARACTERS. A VIBRATORY TOOL MAY BE USED. EXAMPLE DXXXXXX-VY, TYPE-XX, S/N XXX.
6. APPROXIMATE WEIGHT = 99.32 LB.
7. ALL PARTS SHALL BE MANUFACTURED IN ACCORDANCE WITH LIGO SPECIFICATION E0900364.
8. PLUG ALL SCREW HOLES, BOTH TAPPED AND THRU.
9. PAINT ALL SURFACES, EXCEPT WHERE INDICATED BY Δ . USE MEDIUM BLUE SHERWIN WILLIAMS (POLANE (R) T-PLUS POLYURETHANE ENAMEL). PRIME WITH SHERWIN WILLIAMS INDUSTRIAL WASH PRIMER P60G2.
10. APPLY "OXISOLV RUST INHIBITOR" TO ALL UNPAINTED SURFACES, PER MFG INSTRUCTIONS. REMOVE PLUGS FROM ALL HOLES.

REV.	DATE	DCN #	DRAWING TREE #
v3	7 Mar 2011	E1100015	E1100016



NOTES AND TOLERANCES: (UNLESS OTHERWISE SPECIFIED)		LIGO CALIFORNIA INSTITUTE OF TECHNOLOGY MASSACHUSETTS INSTITUTE OF TECHNOLOGY		PART NAME	
1. INTERPRET DRAWING PER ASME Y14.5-1994. 2. REMOVE ALL SHARP EDGES, R.02 MIN. 3. DO NOT SCALE FROM DRAWING. 4. ALL MACHINING FLUIDS MUST BE FULLY SYNTHETIC, FULLY WATER SOLUBLE AND FREE OF SULFUR, SILICONE, AND CHLORINE.		ADVANCED LIGO		HEPI CROSSBEAM FOOT LEFT, αLIGO HAM	
DIMENSIONS ARE IN INCHES TOLERANCES: .XX ± .015 .XXX ± .005 ANGULAR ± .5°		MATERIAL: Low Carbon Steel FINISH: 63 μinch		DESIGNER: A. STEIN CHECKER: K. MASON APPROVAL: K. MASON	
		NEXT ASSY: D1100145		SIZE: D DWG. NO.: D020195-03 SCALE: 1:3 PROJECTION:	
				SHEET 4 OF 4	