

4

3

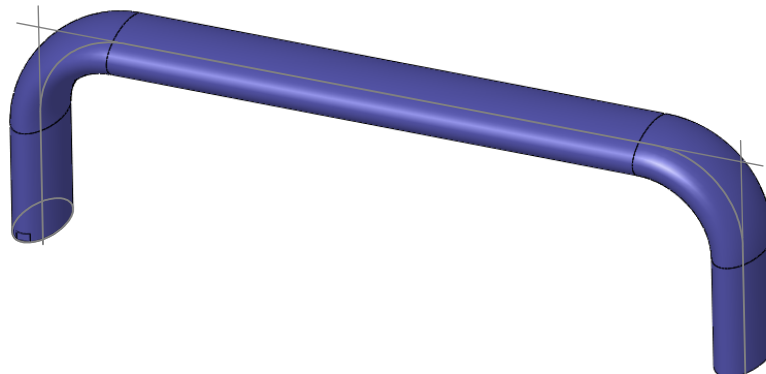
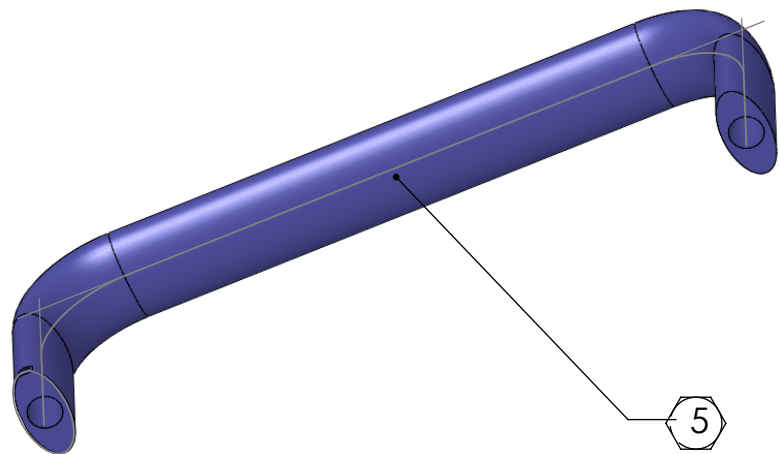
2

1

NOTES CONTINUED:

5 SCRIBE, ENGRAVE, OR MECHANICALLY STAMP (NO INKS OR DYES) DRAWING PART NUMBER AND REVISION ON NOTED SURFACE FOLLOWED ON THE NEXT LINE BY A THREE DIGIT SERIAL NUMBER. SERIAL NUMBERS START AT 001 FOR THE FIRST ARTICLE AND PROCEED CONSECUTIVELY. USE .07" HIGH CHARACTERS. EXAMPLE: DXXXXXX-VY, S/N 001. A VIBRATORY TOOL MAY BE USED.

REV.	DATE	DCN #	DRAWING TREE #
-	07-29-2009	E0900223-v1	-
-	-	-	-
-	-	-	-



ref. MCMaster 1897A25

NOTES AND TOLERANCES: (UNLESS OTHERWISE SPECIFIED)

DIMENSIONS ARE IN INCHES

TOLERANCES:  
.XX ± .02  
.XXX ± .005

ANGULAR ± 1.0°

1. INTERPRET DRAWING PER ASME Y14.5-1994.
2. REMOVE ALL SHARP EDGES, R.02 MIN.
3. DO NOT SCALE FROM DRAWING.
4. ALL MACHINING FLUIDS SHALL BE WATER SOLUBLE AND FREE OF SULFUR, CHLORINE AND SILICONE, SUCH AS CINCINNATI MILACRON'S CIMTECH 410.

<b>MATERIAL</b>	6061 BLK ANODIZE	<b>FINISH</b>	N/A
-----------------	------------------	---------------	-----

**LIGO** CALIFORNIA INSTITUTE OF TECHNOLOGY  
MASSACHUSETTS INSTITUTE OF TECHNOLOGY

<b>SYSTEM</b>	ADVANCED LIGO	<b>SUB-SYSTEM</b>	AOS
<b>NEXT ASSY</b>	D0901417		

<b>PART NAME</b>				ADLIGO_TCS_LASER_ENCLOSURE_HANDLE	
<b>DESIGNER</b>	KMAIALND	07-17-2009	<b>SIZE</b>	<b>DWG. NO.</b>	<b>REV.</b>
<b>DRAFTER</b>	KMAILAND	07-17-2009	A	D0901482	v1
<b>CHECKER</b>			<b>SCALE:</b> 1:1	<b>PROJECTION:</b>	SHEET 1 OF 1
<b>APPROVAL</b>					

4

3

2

1