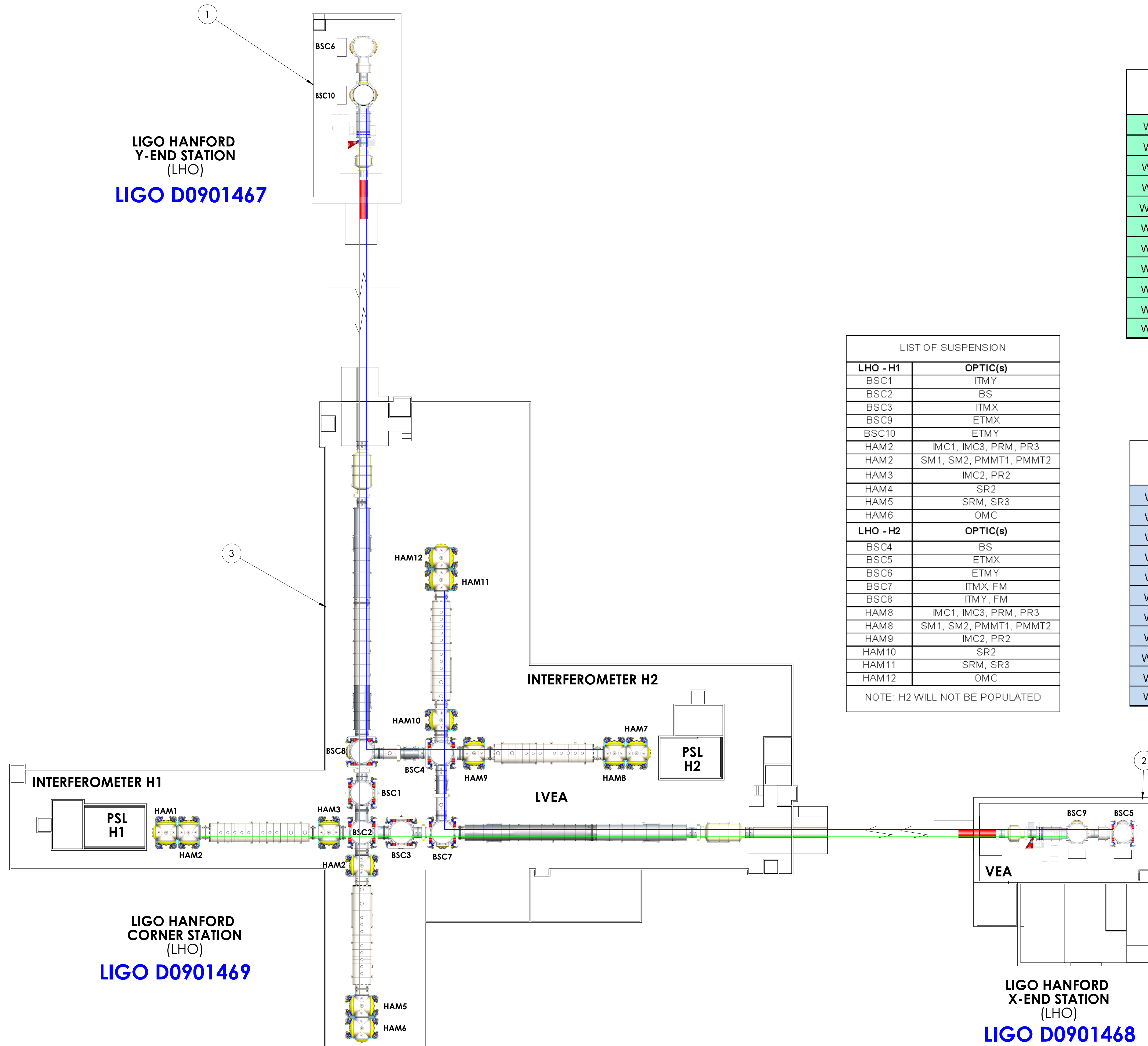


# ADVANCED LIGO HANFORD SYSTEM LAYOUT

REV.	DATE	DCN #	DRAWING TREE #
v4	24 JAN 2014	-	-
v5	04 APR 2014	-	-
-	-	-	-



## H1

Chamber	Top Level Chamber Assembly	Install Documents
WBSC1 - H1	<a href="#">D0901137</a>	<a href="#">LIGO-E1200915: aLIGO Chamber (Top Level) Installation Procedure: WBSC1</a>
WBSC2 - H1	<a href="#">D0901142</a>	<a href="#">LIGO-E1200971: aLIGO Chamber (Top Level) Installation Procedure: WBSC2</a>
WBSC3 - H1	<a href="#">D0901146</a>	<a href="#">LIGO-E1300605: aLIGO Chamber (Top Level) Installation Procedure: WBSC3</a>
WBSC9 - H1	<a href="#">D0901150</a>	<a href="#">LIGO-E1300267: aLIGO Chamber (Top Level) Installation Procedure: WBSC9</a>
WBSC10 - H1	<a href="#">D0901154</a>	<a href="#">LIGO-E1300266: aLIGO Chamber (Top Level) Installation Procedure: WBSC10</a>
WHAM1 - H1	<a href="#">D0901821</a>	<a href="#">LIGO-E1200099: aLIGO Chamber (Top Level) Installation Procedure: W/LHAM1/6</a>
WHAM2 - H1	<a href="#">D0901083</a>	<a href="#">LIGO-E1200566: aLIGO Chamber (Top Level) Installation Procedure: WHAM2</a>
WHAM3 - H1	<a href="#">D0901094</a>	<a href="#">LIGO-E1200450: aLIGO Chamber (Top Level) Installation Procedure: WHAM3</a>
WHAM4 - H1	<a href="#">D0901125</a>	<a href="#">LIGO-E1300204: aLIGO Chamber (Top Level) Installation Procedure: WHAM4</a>
WHAM5 - H1	<a href="#">D0901129</a>	<a href="#">LIGO-E1300205: aLIGO Chamber (Top Level) Installation Procedure: WHAM5</a>
WHAM6 - H1	<a href="#">D0901822</a>	<a href="#">LIGO-E1200099: aLIGO Chamber (Top Level) Installation Procedure: W/LHAM1/6</a>

## H2

Chamber	Top Level Chamber Assembly	Install Documents
WBSC4 - H2	<a href="#">D0900481</a>	TBD
WBSC5 - H2	<a href="#">D0900502</a>	TBD
WBSC6 - H2	<a href="#">D0900512</a>	TBD
WBSC7 - H2	<a href="#">D0900405</a>	TBD
WBSC8 - H2	<a href="#">D0900360</a>	TBD
WHAM7 - H2	<a href="#">D0901825</a>	TBD
WHAM8 - H2	<a href="#">D0900449</a>	TBD
WHAM9 - H2	<a href="#">D0900465</a>	TBD
WHAM10 - H2	<a href="#">D0900469</a>	TBD
WHAM11 - H2	<a href="#">D0900487</a>	TBD
WHAM12 - H2	<a href="#">D0901828</a>	TBD

LIST OF SUSPENSION	
<b>LHO - H1</b>	<b>OPTIC(s)</b>
BSC1	ITMY
BSC2	BS
BSC3	ITMX
BSC9	ETMX
BSC10	ETMY
HAM2	IMC1, IMC3, PRM, PR3
HAM2	SM1, SM2, PMMT1, PMMT2
HAM3	IMC2, PR2
HAM4	SR2
HAM5	SRM, SR3
HAM6	OMC
<b>LHO - H2</b>	<b>OPTIC(s)</b>
BSC4	BS
BSC5	ETMX
BSC6	ETMY
BSC7	ITMX, FM
BSC8	ITMY, FM
HAM8	IMC1, IMC3, PRM, PR3
HAM8	SM1, SM2, PMMT1, PMMT2
HAM9	IMC2, PR2
HAM10	SR2
HAM11	SRM, SR3
HAM12	OMC

NOTE: H2 WILL NOT BE POPULATED

### NOTES:

- FOR ALIGO TOP LEVEL CHAMBER INSTALLATION PROCEDURES, PLEASE REFER TO LIGO E1200023.
- SPOOLS, GATE VALVES, ELECTRONIC EQUIPMENT RACKS, EXO-VACUUM OPTICAL READOUT TABLES, ETC.. NOT INCLUDED IN BOM
- FOR RACK AND CABLE TRAY LAYOUT, PLEASE REFER TO LIGO D1002704.

ITEM NO.	PART NO.	DESCRIPTION	QTY.
9	G1000719	FLOOR OCCUPANCY, OPLEV & PCAL, LHO X-END STATION	1
8	G1000739	FLOOR OCCUPANCY, OPLEV & PCAL, LHO Y-END STATION	1
7	G1000740	FLOOR OCCUPANCY, OPLEV, LHO CORNER STATION	1
6	D1002843	aLIGO Installation, LHO X-End Station, Cartridge & Cleanroom, Layout	1
5	D1001797	aLIGO Installation, LHO Y-End Station, Cartridge & Cleanroom, Layout	1
4	D1002400	aLIGO Installation, LHO Corner Station, Cartridge + Cleanroom, Layout	1
3	D0901469	ALIGO SYSTEM LAYOUT LHO CORNER STATION	1
2	D0901468	ALIGO SYSTEM LAYOUT LHO X-END STATION	1
1	D0901467	ALIGO SYSTEM LAYOUT LHO Y-END STATION	1

NOTES AND TOLERANCES: (UNLESS OTHERWISE SPECIFIED)		PART NAME	
MATERIAL	N/A	FINISH	N/A
SYSTEM	ALIGO	SUB-SYSTEM	SYS
DESIGNER	E.SANCHEZ	DATE	24 JAN 2014
DRAFTER	E.SANCHEZ	SIZE	DWG. NO.
CHECKER	SEE DCC	SCALE	NTS
APPROVAL	SEE DCC	PROJECTION	1

ADVANCED LIGO MECHANICAL LAYOUT

REVISION: D0901477

SHEET 1 OF 1